

TIMOTHY'S EPISTLE

August 2018



Dates to Remember

- August 11 Comedy Night & Covered Dish Dinner
- August 12 ECE Staff Dedication
- August 15 First Day of Preschool
- August 19 Sunday School Rally Day
- August 24 AGAPE Dinner
- August 27 Ladies Night Out

Timothy Lutheran Church

Call Committee

John Dicks	Tim Furnish	Barb Bowler
Eric Symonds	Marlene Snyder	Pat Freeman
Larry Kastens	Brian Howe	Terri Greer

Timothy Lutheran Church
556 Arnold Mill Road
Woodstock, GA 30188
Www.tlcwoodstock.org

Church Office—770 928-2812
Preschool—770 924-7995
Timothy's Cupboard—770 591-5515
email: timothylutheran@comcast.net

10 Traits of a Great Church Member

By [Ron Edmondson](#)

Obviously, God builds the church, but He uses people to build it. What kind of members does God use to build a great church? I have noticed some trends among church people who help move the church forward. The following is a list of characteristics of those type of people. Not everyone will have every quality, but it's the combination of each of them in people that builds a great church.

Great church members:

Believe and love God's Word. Joshua 1:8 *"Study this Book of the Law continually. Meditate on it day and night so you may be sure to obey all that is written in it. Only then will you succeed."*

Great church members let the Bible guide them and the church.

Grow in prayer. Ephesians 6:18 *"Pray at all times and on every occasion in the power of the Holy Spirit. Stay alert and be persistent in your prayers for all Christians everywhere."* Great church members pray more than worry.

Build on faith. Hebrews 10:38 *"And a righteous person will live by faith."* Great church members are willing to walk by faith as God leads, even through the most challenging times.

Put God's will first. Mark 3:35 *"Whoever does God's will is my brother and sister and mother."* Great church members put God's will ahead of every other agenda.

Enjoy meeting with God regularly. Amos 4:12 says, *"Prepare to meet your God,"* Great church members look expectantly and often for opportunities to worship God and experience Him with other believers.

Support the pastor and the church. 1 Corinthians 16:10-11 *"When Timothy comes, treat him with respect. He is doing the Lord's work, just as I am. Don't let anyone despise him."* A pastor is always looking for someone to call friend. Great church members are that friend. The pastor isn't always right, but great church members look for ways to support more than complain.

Are Encouragers in the church. 1 Thessalonians 5:11 *"So encourage each other and build each other up, just as you are already doing."* Great church members are a part of the solution, not a part of the problem. They look for ways to help, invite their friends and neighbors, and volunteer without having their arms twisted.

Don't think everything is about them! Matthew 16:24 *"Then Jesus said to the disciples, 'If any of you wants to be my follower, you must put aside your selfish ambition, shoulder your cross, and follow me.'" Did you know everything may not go your way? Great church members are willing to allow the best to be done for the church even when it sometimes goes against their personal desires.*

Think outside the walls of the church. Acts 1:8 *"But when the Holy Spirit has come upon you, you will receive power and will tell people about me every where--in Jerusalem, throughout Judea, in Samaria, and to the ends of the earth."* If we are not careful, our churches could be hard to tell apart from a Country Club. Great church members think of those not yet in a church...and support the church in reaching them.

Maintain a friendly church. 2 John 6 *"Love means doing what God has commanded us, and he has commanded us to love one another, just as you heard from the beginning."* Great church members make sure guests never stand around long with no one to talk to. They are welcoming and friendly to everyone, with or without a title to do so.



**Barbara
Bowler,
Director**

ECE Mission Statement

- To serve as a Ministry of Timothy Lutheran Church
- To share Jesus' love with children and families
- To provide academically excellent Christian education to children and their families in a safe, loving environment

Preschool News

Dear Friends,

This summer has brought much work and resulting progress as we continue to keep up with the growth of our preschool. Once again, we expanded a Pre-Kindergarten classroom and are scouting for office space in the remaining areas available, which are quite limited. We hired three new staff members, and continue to develop a resource management process in accordance with our accreditation requests.

I am amazed and humbled by what can be done when people work together to do God's work. Over the past month, a group of Trustees and friends of our ECE ministry have accomplished many tasks to prepare for the upcoming school year.

Heartfelt thanks to

Jim Taylor for pressure washing the playground,

Suzanne Forman, Carol Taylor, Sandy Hooks, Terri Greer and Michelle Roskovich for their work on the ECE Board,

John Hornberger for maintaining our computers,

Gail Goeddeke for eliminating the weeds,

Suzanne Forman for refreshing the Discovery Playground,

John Bowler for completing many odd projects at many odd hours,

Bill Schute for cleaning lights and vents,

Terri Greer for helping organize resources,

Pat Freeman for tirelessly helping with everything,

Marlene Snyder for staying on top of things,

Linda Basler for supporting the staff and program,

Doreen Erbe, Frank Plunkett and Nancy Whittle for handling payroll, bills, and deposits,

Davina Furnish for advising us on all matters insurance,

Laney Share for helping assemble handbooks,

Jeannie, Carol and Marge for providing afterschool snacks,

Don Snyder and the Trustee Board for coordinating tons of projects.

If you haven't been downstairs lately (or ever), please come and check it out. If you'd like to come visit, I would love to show you around – I think you will enjoy seeing all that goes on during the week at Timothy!

Along with the physical preparations, we are working daily to get ready for the staff and students coming to our school this year. We have 15 staff members and 110 students this year, up from 98 at this time last year.

(Cont. next page)

(Preschool, Continued)

With these changes and the program growth come new opportunities, and the responsibility to reach out to the families in our community. It's easy to get excited about the paint, new staff shirts, and increased enrollment, and tough to remember that these things of the world are nothing without God from whom ALL things are possible - we give Him thanks and praise!

Thank you very much and God's blessings on your family, our congregation and our ministries here at Timothy.

Barb Bowler

PRESCHOOL HAPPENINGS

- August 12 Staff Dedication Sunday – 11:00 a.m.
- August 15 First Day of School

EVANGELISM

Community Outreach

Thanks to the 17 TLC members who participated in walking with our Woodstock July 4th float, handing out inspirational bracelets and other goodies. Our "God Blesses America the Beautiful" theme received Honorable Mention in judging. Suzanne Forman, Faye Wiese and Michelle Roskovich did a great job in designing and building our float. This is a fun way of letting the Woodstock community know that we love Jesus and want to share His Good News.



Timothy is a 2018 \$500 community sponsor of the River Ridge High School football team. We will have a ¼ page ad in their football media guide, our logo will be seen on their jumbotron. We will receive a sponsor's plaque, a 3' x 2' stadium sign with our church name and phone number displayed on it and our church name will be on their River Ridge football website with a link to our church website. Thanks to Dean Torek for designing our ¼ page ad.

VBS Follow Up

Our Board will be sending emails to the families who attended our June VBS program inviting them to our worship services and Sunday School. We want to nourish the seeds that may have been planted during our VBS week.

AGAPE DINNER



Please join us on Friday, August 24, 2018 at 6:30 p.m. for our second annual Agape Dinner. This fellowship event was introduced last year as a wonderful opportunity to share God's love with our brothers and sisters in Christ. As we did then, we'll have Holy Communion, a catered dinner, and a special guest speaker. We have invited Pastor Dave Wesche of All Saints Lutheran Church in Blairsville, GA as our guest speaker. Pastor Dave previously spent time at Timothy and we are looking forward to having him share words of encouragement and the love of our Savior.

In order for us to plan appropriately, please let us know your attendance by August 19th at the latest, by signing up on the sheet across from the Secretary's office. We look forward to seeing you there to share this wonderful evening!

Georgia



AND



Food, Fun & Fellowship – what better way to spend a Saturday evening.

Join us on Saturday, August 11, 2018 at 6 PM.

We have a DVD of a Christian-based stand-up comedian that will “hit home” for couples – but singles will enjoy it also.

Babysitting will be provided, if needed.

Please sign up on sheet located on bulletin board next to mailboxes.

Donations will be gathered to support the Cherokee Schools Lunch Program to assist those students who would not receive a hot lunch because their lunch ticket has run out.

Ladies Night Out

This month, on Monday August 27, 6:30 pm, the TLC ladies will be dining out at:

The Mellow Mushroom

2370 Towne Lake Parkway

Woodstock, GA 30189

Let us know you will be coming by signing up on the Sign Up bulletin board. Come Join US!



Welcome to our New/Returning Members—Michael & Elaine Parnow



Mike and Elaine are native Georgians, both were born in Atlanta and grew up in Decatur, Georgia. They have one daughter, Alyson, who is a Timothy member and a graduate of Reinhardt University. Before Mike retired in February, 2018, he worked as the Director of Product Development for Ashley Furniture. He enjoys sports and yard work. His favorite Bible verse is Philippians 4:13, "I can do everything through Him who gives me strength."

Elaine worked in payroll accounting before Alyson was born. When Alyson was born, Elaine became a stay-at-home Mom and volunteered in several ministries at Timothy before they moved to Wisconsin. In Wisconsin, she was the town treasurer and drove a school bus for a while. She is interested in arts and crafts and enjoys reading. Her favorite Bible verse is Psalm 34:4, "I sought the Lord and he answered me: he delivered me from all my fears."



The summer has gone too quickly. I am happy to report that there will be two new members in the choirs.

The bells were sent out to be refurbished in July. They are ready to be picked up and I will make arrangements to get them returned next week.

I will be sending out an email with the schedule. My plan is to have an organization meeting on Tuesday August 21. The meeting should begin around 7pm. If any member of the church is interested, they are free to come and join us.

THE CRITICAL IMPORTANCE OF CHURCH CHOIRS

1. Choirs are Biblical
2. Choirs Encourage Excellence in Worship
3. Choirs Celebrate the Human Voice
4. Choirs Can Inspire and Lead Worship
5. Choirs Can Be Redemptive Communities
6. Choirs Make Us Work Together
7. Choirs Can Encourage Musical Diversity

TIMOTHY's CUPBOARD

The Apostle Paul said in 1 Corinthians 13:2 *"If I have the gift of prophecy and can understand all mysteries and all knowledge and if I have a faith that can move mountains but have not charity I am nothing."*

The Month of June	The month of July
Number of families fed: 235	Number of families fed 242
Number of people fed: 1285	Number of people fed 910
Number of children fed 224	Number of children fed 193
Number of seniors fed: 118	Number of seniors fed 203
Total amount of food distributed was 46,965 pounds.	Total amount of food distributed was 53,859 pounds

We are trying to accommodate more clients, so we are opening at 8:00 am on Tuesday and Thursday. We are open to all families in Cherokee County and if anyone finds themselves in need of a little help you can speak with me personally.

New Refrigerator Installed

For the last few years we have been receiving rather large quantities of fruits and vegetables from Sam's Club, Walmart and Target. The current refrigerators just couldn't hold it all and many times the fruits and vegetables had to be stored at room temperature. New commercial [refrigerators and freezers](#) are heavier than residential units and require an individual electrical circuit. To add the new refrigerators and freezers the floor in the sweets area had to be reinforced and leveled. Our favorite friend; Don Snyder, and his helpers including Lyle Hilyard, Ken Hill, Lawson Knotte, Jon Holbrook, Mike Lawson and others crawled under the cupboard, re-enforced the flooring, made it level and put down new subflooring including tile. Don Snyder and Jon Holbrook added 2 new electrical outlets to the sweets area and 1 new electrical outlet in the kitchen area. Since completion of the work we obtained our first commercial refrigerator with donations from members of our congregation. The refrigerator fund had \$3,600 and John Stark was able through a vendor recommended by the Atlanta Community Food Bank to get the unit for \$3,100 included setup and no taxes. It is beautiful, holds a lot of produce and keeps the produce fresher longer with less spoilage. As funds become available we will be adding another commercial refrigerator and freezer. We are truly blessed to have a congregation that is so supportive of this ministry.



Thanksgiving Basket

Thanksgiving will be here sooner than we think, this is just a reminder that the cupboard will be giving out Thanksgiving baskets to those in need. We try to service about 100 families each Thanksgiving. The cupboard prepares special food boxes making sure to include a turkey breast, stuffing mix, potatoes, pie and other specialties of the season as well as the regular needs for the month. Timothy church members are asked to "adopt a family" by donating funds to help pay for the "extra food items" and support the larger number of clients served during the holidays.

Christmas Angel Tree

Thinking about being prepared we need a volunteer to organize the Christmas Angel tree this year

Nursing Home

We are also looking for creative people who can knit, crochet or sew to make lap blankets, scarves and shawls for the elderly people in the Woodstock nursing home. Also; we are asking for donations of small containers of toothpaste, small packs of tissues, mouth wash, body wash, brushes, combs, and wipes.

Thank you.

For more information please contact Carol Alquist at 770-490-9156.

STEWARDSHIP

Here we are – a couple of months without “our” pastor, relying first on God, and then His instruments – a.k.a. elders and others, along with supply pastors – to keep Timothy moving along. Each week as the supply pastors or elders and others have stepped in, I am deeply appreciative of the many talents God has given to his people. Yes, in some cases it is part of their ‘job’ to lead a service, yet God has perfectly equipped each for just this time and put them in just this place for our congregation.

As we move forward through this time we don’t know exactly what the future holds, or in what time frame. That can make us uneasy. Now, in full disclosure let me say that I, for one, *like* to know the who, what, where, when, why and how of things. Yes... *I am a planner*. It gives me great satisfaction to organize something from beginning to end, hit milestones and bring it to completion. I am not all that fond of surprises, and it isn’t that unusual for me to geek out about a spreadsheet, testing multiple variables for worst-case scenarios to prevent a budget blow-up. No matter how that spreadsheet goes, though, there is one thing I know for certain. I know that God is sovereign, that He loves and cares for me, and He has a far better plan than I can possibly imagine. He has turned seemingly catastrophic circumstances in our life into amazing blessings. *He has a plan for Timothy, too*. That is not to say we won’t have some trials along the way, but His constant, unchanging word is our guide. He never fails us and always meets our needs. Trust in His faithfulness and timing, and be an active participant in the process. Each of us, including you, is precious to God and an important part of the Timothy family. And no family is complete without all of its members.

While we wait for that plan to be revealed, please consider becoming connected and involved at Timothy. We have many individual talents, but no one person has every talent, nor can one person do everything. Our connections to each other through worship, ministry, socializing and friendships help to strengthen our Christian family. Combining our individual gifts makes us stronger because, as it turns out, our gifts are meant to complement each other. Simply put, we are better together. We were meant to be in community with each other.

Much like the multiplying of the loaves and fishes, we, too, can multiply our gifts by greater involvement in the many ministry opportunities at TLC. If you are not presently participating in fellowship events, other activities or serving in some ministry, I encourage you to begin. Each of us is an important part of the body of Christ. For those already involved, I encourage you to invite someone to come along with you to an event or to do a task with a group.

As we settle back into our routines going into the fall, sign up for a board, respond to a special need, or jump in on a project. A Faith in Action form is on the last 2 pages of this newsletter – select something new and give it a whirl! Forms can be returned to my mailbox (TRIMBLE), or electronically to gardengail@comcast.net.

Finally, thank you. Thank you to each of you that have responded to God’s call to service. Whether you teach Sunday school, work at the food pantry, teach in the preschool, clean tables, fold bulletins, run the sound board, usher, provide music, serve on a board, set up coffee on Sunday mornings, and so many more tasks that can be mentioned, you are appreciated more than you know. It takes all of us to be the hands and feet that God needs!

Gail Trimble

CHRISTIAN EDUCATION

Submitted by Amy Brown and Karen Bennett

Fall Education Rally Day Celebration – August 19th

Join us for a special presentation by our own Steve and Jennifer Armbrust from 9:45 – 10:00AM on August 19th in the Sanctuary as we kick-off the Fall Sunday School/Bible Study education season. All ages are invited – children, parents, and adults.

Vacation Bible School Thanks

A big thank you to the following people who showed their love and dedication to the over 100 children from our membership rolls and the community during Timothy's Vacation Bible School this past June:

- **Co-directors Michelle Roskovich and Christy Hopewell**
- **Station and Crew Leaders, and Crew assistants** (adults and teens) for their time, hours of preparation, and patience who led, taught, served, and helped in the classes
- **Registration staff** Karen Bennett and Linda Basler
- **Decorations and Signage Artists** Suzanne Forman, Jeannie Bernerth, and Dean Torek
- **AV tech** Jack Basler
- **Opening and Closing Leaders** Steve and Jennifer Armbrust
- **Don Snyder** for his endless expertise and assistance in many, many areas!
- **Barry Smith for obtaining much needed carpet rolls** from Cherokee Floor Coverings in Lebanon, GA
- **The Congregation** for their continued support year after year
- **Texas Roadhouse, Marietta** for donating free appetizer coupons for the volunteers, and free meal coupons for the kids
- **Dairy Queen, Woodstock** for donating free "cone" coupons for the kids and volunteers

Save the date – Sept 9th – Visit from Missionaries Peter and Lucy Hoffmann

Missionaries Lucy and Peter Hoffmann, members of King of Kings Lutheran Church in Jasper, are preparing to be deployed to the Czech Republic. They will make a presentation to Timothy about their upcoming ministry during the Bible Study hour on Sunday, September 9 – please plan to attend! More details to follow in the upcoming weeks.

Volunteers Needed for Fall Sunday school – Subs and Pre-school Assistants

With the start of Fall Sunday school in September, we need the following volunteers:

Pre-School Assistants: Our pre-school (two – four year old) class is very large and we need a volunteer each week to assist our pre-school teacher. No preparation is required – you just have to show up to help.

Subs: Occasionally, we need a substitute teacher to teach our pre-school through 5th graders.

If you can help with either volunteer opportunity, please contact Karen Bennett (678-232-6494) or Amy Brown (770-570-9512).

Children's Summer Sunday School

Sunday school is available at 9:45AM on Sunday mornings. Three classes are offered this summer: a) preschool/ kindergarten, b) 1st through 5th grades, and c) middle and high schools.

Christian Education, Continued

Adult Bible Study

Timothy offers two adult bible studies each week on Sunday mornings at 9:45AM:

Summer Adult Bible Study in the Fellowship Hall. **This class will continue to study “Christianity – the First Three Centuries: by Dr. Paul Maier”, an eight week video series.**

The Wired Word class, led by members of the class, in the conference room outside of Pastor’s office. **This study focuses on a topic in the news from the past week.**

Sunday School/Bible Study Mission Offerings

Thanks to your donations in the month of May we were able to send **\$75 to the LCMS Ministry to the Armed Forces.**

We will take a break from collecting for Christian Einertson’s expenses as he continues to study at Concordia Seminary St. Louis. Starting this month **we will collect for missionaries Peter and Lucy Hoffmann who will be deployed to the Czech Republic** (see the “save the date” paragraph above), with a goal of collecting \$500 for them. We will resume collecting for Christian once we have reached this goal.

“Instruct the wise and they will be wiser still; teach the righteous and they will add to their learning.” Proverbs 9:9



Save the Date: Work Day on Saturday, Sept. 8th

Please mark your calendar for our fall (outside) work day on the morning of Saturday, Sept. 8th. We will tackle the following major tasks: trimming, pruning, and chipping trees along Arnold Mill Road and along the parking lots. We will need you to bring your chain saws, tree pole trimmers, loppers, etc. More details as the date approaches. If you have questions, please contact Suzanne Forman at suzymf49@gmail.com or Don Snyder at donqsnyder@gmail.com.



ROAD TRIP!!

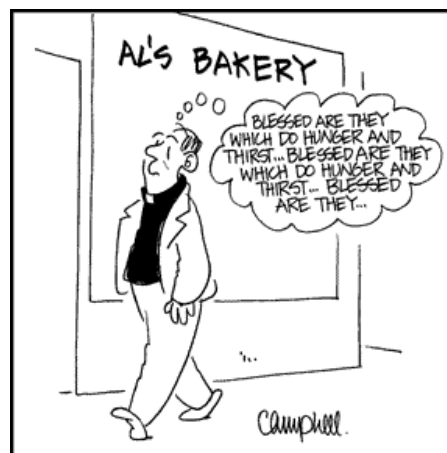
TWIGS (and anyone else that wants to go) Road Trip to Branson, MO to see the play "SAMSON" at the Sight & Sound Theatre on October 31, 7:30 pm. Cost of the play is \$49 each person. **PURCHASE YOUR TICKETS NOW** through Sight-Sound.com. A block of rooms has been reserved at the Best Western Center Pointe Inn (417) 334-1894 for the price of \$89 each night. **MAKE YOUR OWN RESERVATIONS** and mention Timothy Lutheran Church to get the stated rate. Please let Frank Plunkett or Linda Basler know if you make your hotel reservations. For questions, contact Frank Plunkett or Linda Basler.



Elfrieda Allen	8/3
Gail Trimble	8/4
Raye Miller	8/6
Coriander Pins	8/6
Susie Bishop	8/8
Lynn Knox	8/8
Margaret Cehanovich	8/9
Tim Furnish	8/10
Linda Basler	8/13
Abigail Infante	8/13
Don Snyder	8/17
Connie Williams	8/17
Aidan Infante	8/18
Nancy Whittle	8/19
Carol Beene	8/22
Roger Hecht	8/22
Tom Wilcox	8/23
Jeannie Bernerth	8/25
Suzanne Kastens	8/29
Paul Fostvedt	8/31



Jerri & Doreen Erbe	8/1
Markham & Kimberly Peykoff	8/15
Tom & Kathy Wilcox	8/16
Don & Marlene Snyder	8/26
Richard & LaFaye Wiese	8/27
Lee & Emily Clark	8/28
Frank & Sue Plunkett	8/29



Volunteers are needed to Bake Bread for New Visitors on Sunday Mornings. Please see sign up sheet next to mailboxes and fill in date and how many loaves you would like to bake. Thank you very much for your assistance.

Evangelism Committee.

Thrivent to Help Support California Wildfire Victims

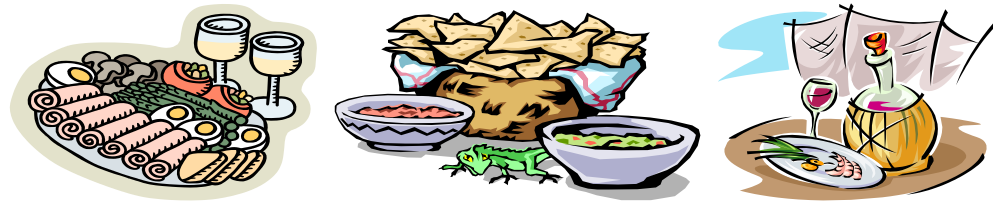
As we pray for those who have been affected by the wildfires, the Thrivent Member Network-Pacific Sierra Region is mobilizing its financial resources and members to help those in need. Thrivent members and others who want to help with the recovery efforts are encouraged to visit www.Thrivent.com to learn more about the matching opportunity on individual personal donations and other ways in which they can help.

Thrivent Member Network—Sierra Region will match up to \$100,000 in personal donations received by October 31, 2018 or when the funding limit is met, whichever comes first.

Your commitment to living generously is appreciated.

SAVE THE DATE!!!!

14th Annual Taste of Habitat



The 14th Annual Taste of Habitat Fundraising Event returns on **September 21 from 7 – 9 PM** at The Metropolitan Club in Alpharetta.

Our goal this year is to raise \$20,000 to build **Habitat** homes in Metro Atlanta. More than 50 fabulous chefs from the **Lutheran Coalition for Habitat** churches will be sharing the foods they love to make. It's a fun **"date night" (adults only)** with outstanding food & drink, great fellowship and most enjoyable live music. There will also be a **Silent Auction and trivia contest!**

How can you participate?



Volunteer to be a chef—All you have to do is prepare 120 "tastes" of your specialty! Appetizers, salads and entrees served from 7-8 and desserts served from 8-9.



Contribute a special item, artwork, dinner or theatre tickets, gift package etc. for the **Silent Auction**.



Be a sponsor or **ask your workplace to sponsor the event**. Businesses appreciate the opportunity to market their support for community charities such as Habitat for Humanity. Sponsorships are **Bronze \$200, Silver \$500, Gold \$1000 and Platinum \$2,500**.



Buy individual tickets for \$25.

For more information, contact Don Snyder – 770-337-5908 or donqsnyder@gamil.com

KID'S CORNER

BUMBLE BEE BALLS

Make these yummy treats as a summer snack.

What you need:

- 1 cup peanut butter
- 1½ oz. instant oats
- ¼ cup honey
- ½ cup instant milk powder
- ½ cup dark chocolate chips
- 40 mini chocolate chips
- 20 slivered almonds
- 40 sliced almonds
- Adult help

What you do:

1. In a bowl, mix peanut butter, oats, honey and instant milk powder into dough. If too dry, add more peanut butter or honey.
2. Roll dough into 20 long balls. Place them on a cookie sheet and refrigerate.
3. Melt the dark chocolate chips and place them in a zippered baggie. Cut a tiny bit off one corner.
4. Remove dough from refrigerator. Squeeze thin lines of chocolate as stripes onto the bee bodies.
5. Use two mini chocolate chips for eyes, a slivered almond for a stinger and two sliced almonds as wings. Enjoy!

PUZZLE

GOD'S amazzzzing BEES

God created bees to pollinate flowers and make honey. Psalm 119:103 says God gives us something that's even sweeter than honey.

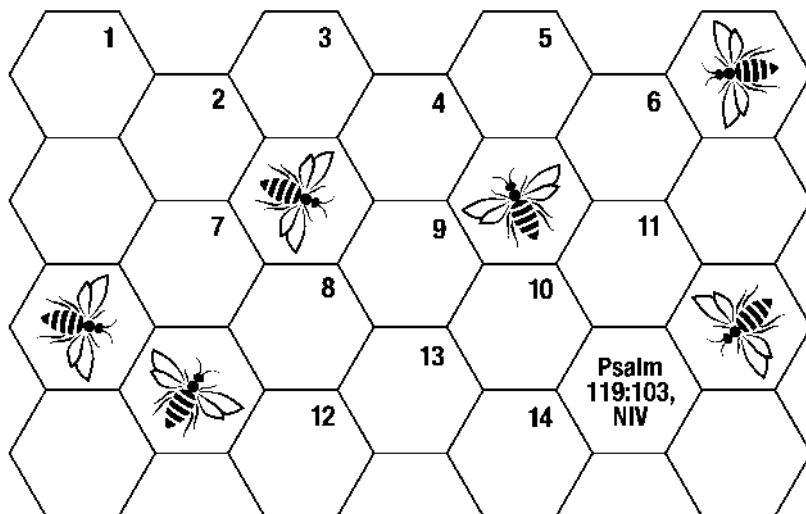
Directions: Find the word that fits each clue. Then write the answers in the correct numbered honeycomb shape to complete Psalm 119:103, NIV.

CLUES

- | | |
|-------------------------|--------------------------|
| 1. rhymes with cow | 8. the tongue's job |
| 2. opposite of sour | 9. more sweet |
| 3. pronounced "R" | 10. rhymes with pan |
| 4. rhymes with four | 11. golden liquid |
| 5. Letters create ____. | 12. Pleased __ meet you. |
| 6. not too or two | 13. rhymes with fly |
| 7. rhymes with by | 14. body part |

WORD BANK

than your to are
sweet sweeter How
my honey mouth
words to taste, my



Answer: How sweet are your words to my taste, sweeter than honey to my mouth! Psalm 119:103, NIV

ALL THINGS MOTORCYCLE

Camp-n-Ride '18 – Awesome (and Surprising

Friday afternoon the 15th, Mel, Dave and Larry played hooky and set off for an overnight adventure in the N Ga mountains. Though recent weather had been very wet, our forecast looked hopeful for a great trip. We enjoyed old favorites like Burnt Mountain, Sunrise Ridge and Doublehead Gap as we wound our way northward. After a well-earned break at the always-enjoyable Van Zandt's in Dial, Mel decided to forego the "off-road" trip through the forest to our campsite in Suches. His brand new knees were beginning to feel the strain (and that turned out to be a good call).

Mel headed down twisty 60 to Suches and warmed up a porch rocker at our night's destination, Two Wheels of Suches – the Southeast's original motorcycle campground and lodge. Larry and Dave began their trek thru the forest and were quickly surprised. Immediately upon turning right onto FS 58 (Noontootla Creek), they encountered freshly-dumped, foot-thick, baseball-sized gravel – a real handful on their loaded bikes. Thankfully there weren't too many rocky sections to negotiate, but... the road grader had been in heavy use and, combined with all the recent rain, created long stretches of soft, rutted mud to negotiate. By the time they made it to the top of the mountain they were pooped! Fortunately, the remaining trip across FS 42 and down Gaddistown Road and Hwy 60 were superb - and quick, since the afternoon popups were starting to pop.

<https://www.youtube.com/watch?v=Ew276DTVEFY&feature=youtu.be>

As we (quickly) set up our tents at TWO, Richard surprised us and camped as well. Richard just barely got his tent up before the skies opened up! Oh well, porch-rocker-time for all! Dinner at the lodge was great (mmm, rib eyes). Our next surprise was some unusually noisy camp neighbors, but that was solved with the foam earplugs we all carry.

Saturday's breakfast was hot and hearty, as always. With no other riders joining us, we were soon packed and on the road for our next surprise... zero traffic! We enjoyed Wolf Pen Gap (Ga's Dragon's Tail) all the way to 75 with nary a car in sight. Our trip down 75 to Helen was almost as clear. Since it was too early for lunch in Helen, we continued up the Richard Russell Scenic Hwy like we owned it, then down through Blood Mtn likewise. We couldn't have asked for a better day in the mountains!

During lunch at Turner's Corner General Store... surprise, the afternoon pop ups were ahead of schedule. Mel was able to skirt around them as he headed home in Athens, staying mostly dry. Larry and Dave, not so much. Their pop up exploded in size, causing them to stop and take cover, then play dodge 'em the rest of the way home. They decided it was a worthwhile price to pay for such a great day's riding some of the best motorcycling roads E of the Mississippi. Total mileage was 250. Hope to see you on the next one.

FAITH IN ACTION SURVEY

(Please place a check beside your area of interest. Someone will be in touch with you)

NAME: _____**CONTACT INFO:** *(please check preferred method)*_____ **Email:** __________ **Phone:** _____**BOARD OF CHRISTIAN EDUCATION**

_____ Teaching Sunday School (children or youth)

_____ Teaching Sunday School (adults)

_____ Helping with special Sunday School programs throughout the year

_____ Weekly small group Bible studies

_____ Assisting in the nursery _____ 8:30 _____ 11:00 _____ As needed

_____ Vacation Bible School

_____ Coordinator

_____ Music director

_____ Daily opening and closing program leader

_____ Registration / Administration

_____ Group leader

_____ Group assistant

_____ Games and other activities

BOARD OF EARLY CHILDHOOD EDUCATION (ECE School)

_____ Assist with organizing special school events

_____ Work with ECE staff as needed

BOARD OF ELDERS

_____ Serve as an Elder

_____ Worship Committee

_____ Sing in the adult choir

_____ Accompany the adult choir on keyboard / organ

_____ Play in the handbell choir

_____ Play another instrument:

_____ Prepare altar for services _____ 8:30 _____ 11:00 _____ As needed

_____ Usher for services _____ 8:30 _____ 11:00 _____ As needed

_____ Lay reader for services _____ 8:30 _____ 11:00 _____ As needed

_____ Present a Children's Message

_____ Run the sound system for services (Audio Tech)

_____ Help with Information Technology (Church Website, Membership Data, etc.)

BOARD OF EVANGELISM

_____ Work on a Habitat for Humanity House

_____ Greeters for worship services _____ 8:30 _____ 11:00 _____ As needed

_____ Delivery of "Welcome to the Community" bags to area subdivisions

_____ Encourage and help those interested in church membership

_____ Publicity

_____ Digital signage

BOARD OF FELLOWSHIP

- _____ Work in the kitchen for congregational events (Fall Festival, Voters' Meeting, etc.)
- _____ Prepare and serve food
- _____ Maintain kitchen supplies
- _____ Help with set-up and clean-up of kitchen and fellowship hall
- _____ Coordinate supper club
- _____ Participate supper club

BOARD OF SOCIAL MINISTRY

- _____ Work in the TLC food bank
- _____ Pick-up food donations from local stores
- _____ Help with bingo at the Woodstock Nursing Home on Thursdays

BOARD OF STEWARDSHIP

- _____ Help new member assimilate into the church family
- _____ Discover members' gifts and talents
- _____ Encourage all members to use gifts and talents (coaching)
- _____ Coordinate ministry fair and volunteer recognition
- _____ Present quarterly "Stewardship Minute" during Sunday morning worship services

BOARD OF TRUSTEES

Maintaining church building

_____ Carpentry

_____ Plumbing

_____ Electrical

_____ Other areas of expertise: _____

Maintaining church grounds

_____ Gardening

_____ Other: _____

_____ Landscaping

BOARD OF YOUNG PEOPLE'S WORK

- _____ Assist with special events (fundraisers, parties, etc.)
- _____ Assist with Sunday evening youth meetings
- _____ Assist with youth outings

SPECIAL GROUPS

_____ All Things Motorcycle

_____ TWIGS (Empty Nesters)

_____ Straight Shooters

_____ Ladies Night Out

_____ Stepping Stones (Homeless Ministry)

_____ Lutheran Women's Missionary League

_____ Help with special events (weddings, funerals, gatherings, etc.)

OTHER SPECIAL SKILLS

_____	_____
_____	_____