



# The St. Johns Servant

St. Johns  
Lutheran Church

Park Rapids, Minnesota

August, 2021

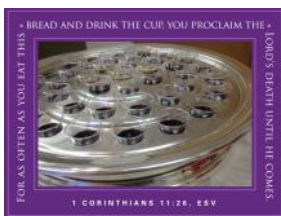
## Front Entry Dedication Set for August 29

Our front entry project is pretty much complete. A huge thank you goes out to the building committee for all the time, thought and effort they put in to make this beautiful new space!

On Sunday, August 29 at 9:00 a.m. we will have a special dedication service. Pastor Neubauer's thoughts are that we will begin the celebration outside the front entry and then move into the sanctuary. We're also planning a reception following the service. Please note that there will only be one service that day and no Bible study.



## Noon Communion Service Continues Through August



The noon communion service will continue through this month. This is a short (25 minute) service held each Wednesday at noon. Attendance is usually around 12-15 people. Communion is given to each person in the pew rather than coming forward as we do on Sunday morning. It's intended for those who need to avoid being around larger groups of people or who may not be able to attend Sunday worship for other reasons.

## Join Us for Vacation Bible School

Vacation Bible School will take place Sunday, August 8 through Thursday, August 12. This year we're doing VBS in the evening again from 5:30—8:00 p.m. VBS is open to all kids age 4 through 6th grade. All activities are planned to take place outside. There is a \$5 registration fee with a cap of \$10 per family. You can register online at our website, [www.stjohnspr.org](http://www.stjohnspr.org), call the church office at 732-9783 or pick up a registration form at church.



## Youth Heading to Evergreen Park



St. Johns youth, grades 5-12, will wrap up the summer with a trip to Evergreen Park on August 31. We will meet at church at 1:00 p.m. And return around 4:00 p.m. Cost is \$5.00 per attendee plus additional money if you would like to hit the snack bar or you can bring your own snacks.

Invite your friends for an exciting afternoon. There's space for 20 on the bus so contact Pastor Newton to reserve your spot or if you have questions.



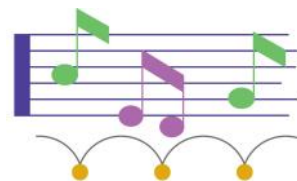
## Keeping the Coffee Coming



Thank you to everyone who turned in their coffee/funeral lunch survey. The committee is working on setting up a coffee schedule that will start in September. In the meantime, we still need some volunteers to help through August. If you can help, please sign up on the sheet in the social hall. You may bring homemade treats or serve the treats available here. We very much appreciate the volunteers who have been serving coffee over the summer. It's so nice to see people visiting in the social hall again!

## August Noon Concerts

- August 5 Matthew Lorenz, piano at Calvary
- August 12 Evan Byler, tenor accompanied by Sarah Carlson at St. Johns
- August 26 Bob Madeson, Ken Vork (Euphoniums), Tyler Bublitz (drums) and Sarah Carlson (piano) at Calvary



Concerts run from 12:15—12:45 p.m. Due to COVID, no refreshments will be served. A free will offering is taken for the artists.

## Ladies Aid Picnic



All ladies are invited to attend the Ladies Aid potluck picnic here at St. Johns on Thursday, August 12 beginning at 1:00 p.m. We plan to meet in the picnic shelter unless the weather is bad. Then we'll move to the social hall. Come enjoy some great food and fellowship!

## Choir Schedule for August

Director, Sarah Kaufenberg, plans to have the Senior Choir sing on August 29. Practices will be on Wednesdays, August 18 and 25 at 5:30 p.m. Call or text Sarah for details at 651-260-3350.



## e-m@il prayer.chain Update

We're making progress on our e-mail prayer chain. It's in the beta testing phase and looks like the current system will work. We're also working on putting a prayer chain request form on the website. If you would like to be a part of the e-mail prayer chain, please go to our website, [www.stjohnspr.org](http://www.stjohnspr.org), and send us an e-mail by clicking "contact us."

The phone prayer chain is still going strong. Thank you to Jan Belshan for volunteering to be a prayer chain leader. To activate the prayer chain, call Bev Spoor at 732-4308 or Jan Belshan at 732-4168.



## Stewardship Review—June

Avg. Sunday Worship Attendance: **175**

Total Offerings: <b>\$37,067</b>	Avg. Weekly Offerings <b>\$9,267</b>	Total Offerings, June, 2020: <b>\$34,818</b>
Total Expenses: <b>\$38,006</b>	Avg. Weekly Expenses <b>\$9,502</b>	Total Expenses, June, 2020: <b>\$34,426</b>
Difference <b>-\$ 939</b>	Difference <b>-\$ 235</b>	Difference <b>\$ 392</b>

Total Offerings, year to date: <b>\$224,913</b>	Budget/Week <b>\$9,855</b>
Total Expenses, year to date: <b>\$224,743</b>	Budget/Month <b>\$42,705</b>
Difference <b>\$ 170</b>	

CNB Checkbook Balance as of 06/30/21: <b>\$85,950</b>	Our Healthy Balance Goal <b>\$74,000</b>
Less Dedicated Accounts <b>\$ 1,384</b>	Raised so far <b>\$50,391</b>
Difference <b>\$84,566</b>	Still need <b>\$23,609</b>

Kitchen Payable **\$15,476**

## New Look for Our Online Giving

Our online giving is administered by a company called Vanco. They're revamping the platform to make it more user friendly and provide more options for donors. Watch for the updated new look in the near future. Give it a try and let us know what you think!



### What's On The Lutheran Hour

- ◆ 08/01 "Blowing in the Wind"
- ◆ 08/08 "Seeing the Savior Sore"
- ◆ 08/18 "A Sunny Place for Shady People"
- ◆ 08/22 "Ephesians 5"
- ◆ 08/29 "Use What You've Been Given"

◆ Listen to the Lutheran Hour every Sunday on KPRM 870 AM at 9:30 a.m. or KTIG 102.7 FM at 5:00 p.m. on Sundays. You can also listen on Sirius XM Family Talk Channel 131, Sundays at 9:00 a.m. or any time on SENTRadio at [lhm.org/sentradio](http://lhm.org/sentradio).

◆ The Lutheran Laymen's League sponsors the program on KPRM each Sunday. If you would like to help sponsor the program your gift may be placed in the offering and earmarked "Local Lutheran Hour."

### † Baptism

07/25 Ford Robert Roy Witt  
Briana Witt





## Give Us Your Gloves

Do you have any gently used youth baseball gloves? Kids in the Marshall Islands would love to have them. Debbie (Guegel) Proudfoot currently lives there with her husband. She says the children love baseball but many are poor and resources are scarce. Your used gloves will be distributed to the Marshallese children through the Christian school. Please drop off gloves at the church office before August 25. You can contact Lori Griess (Debbie's sister) in the church office if you have questions.



## Sunday School Sends Stuff to Lutheran Island Camp



Our Sunday School students were very generous givers this year. Their offerings totaled well over \$500! These offerings were given to purchase equipment for Lutheran Island Camp. We were able to purchase several different balls (some even glow in the dark), beach toys, face paint, sidewalk chalk and three swurfers (a really cool swing-check out the picture!). Sunday School Superintendent, Shelley Lof, took them down to the camp along with four large boxes of shoes we found packed away in the nursery closet.

**Great job, Sunday School Students!**

## Blast from the Past

Shari Sanquist brought in these photos from a huge carnival we had years ago (maybe 1984?). Anybody remember this? You can check out more photos on the bulletin board in the front lobby.







## “Main Street Living North” for August

“MAIN STREET LIVING” is a locally produced TV program that includes a 30 minute worship service led by participating pastors of the Minnesota North and North Dakota Districts of our LCMS, along with a 30 minute Lutheran Hour program (normally “This Is the Life,” along with occasional church season specials). Programs are broadcast at 9:00 a.m. central time on FOX station KVRR Fargo-Moorhead Channel 15.1. Or you can watch archived episodes any time on their website at [www.mainstreetliving.com](http://www.mainstreetliving.com) (then click on “North (Fargo).”



Here’s the programs for August:

August 1:

Rev. Dan Suelzle, Wittenberg Chapel, Grand Forks, ND, presents the message “There’s Only One,” based on Ephesians 4:1-16. “This Is The Life” episode: “Stranger at the Door” - Having given up a baby for adoption 22 years before, a man shows up on a woman’s steps saying he is looking for his mother.

August 8:

Rev. Tom Puffe, St. John’s Lutheran Church, Thief River Falls, and Zion Lutheran Church, Warren, MN, presents the message based on John 6:44. “This Is The Life” episode: “The Fathering Kind” - The story of a single father who is down and out trying to raise a son alone.

August 15:

Rev. Craig Fenske, Immanuel Lutheran Church, Grand Forks, ND, presents the message: “Words of Eternal Life” based on John 6:51-69. “This Is The Life” episode: “A Nice Girl Like You” - A widowed pastor dates a middle-aged single woman in his parish, but when she professes her love, he tells her he cannot return it.

August 22:

Rev. Daniel Voth, Immanuel Lutheran Church, Grand Forks, ND, presents the message “13th Sunday after Pentecost,” based on Isaiah 29:11-19, Ephesians 5:22-33, and Mark 7:1-13. “This Is The Life” episode: “But Not For Lunch” - A man has difficulty adjusting to retirement until he turns his time over to the Lord.

August 29:

Rev. Richard Biberdorf, Grace Lutheran Church, Carrington, ND, Grace Lutheran Church, Cooperstown, ND, and Zion Lutheran Church, Binford, ND, presents the message “Rules for the Real World” based on Deuteronomy 4:1-2, 6-9. “This Is The Life” episode: “Candidate for Father” - A unwed daughter is not forgiven by her candidate for city council father.

If your cable doesn’t have KVRR, you can watch a different version (different pastors, mainly from Minnesota South) on WFTC out of the Twin Cities, Sundays at 9:00 a.m.



Main Street Living receives no money from the Synod or any District budgets so donations are appreciated. To help support the ministry, send your check to Main Street Living, 821 5th Ave. S., Fargo, ND 58103.



# Sunday School Page

## FAITHFUL ; followers

Play these fun variations on Follow the Leader — and remember to follow Jesus wherever you go!

### What you need:

- Bean bags
- Tables, chairs, pillows
- Painter's tape

### What you do:

Players line up behind the Leader, who moves around in various ways. Followers must copy the Leader's movements faithfully. Try these variations:

1. Players must balance a bean bag on their head as they follow the Leader.
2. Set up an obstacle course, and follow the Leader by crawling under tables and chairs, hopping over pillows and so on.
3. With tape, make zigzags and curves on the floor. Then follow the Leader as if walking on a tightrope.
4. The Leader designates types of terrain to imagine, such as mud, snow, ice and a mountain.
5. Also try animal movements, mirrored movements and dancing movements.



## No kidding

Whatever our age, God calls us to model holy living for others.



Directions: Match the animal young with its parent. Then write the letter answers in order below to complete 1 Timothy 4:12, NIV.



- |                 |                   |            |              |
|-----------------|-------------------|------------|--------------|
| 1. ___ bear     | 9. ___ monkey     | A. fry     | I. hatchling |
| 2. ___ frog     | 10. ___ platypus  | B. fawn    | K. foal      |
| 3. ___ owl      | 11. ___ alligator | C. gosling | L. owlet     |
| 4. ___ horse    | 12. ___ giraffe   | D. cub     | M. puggle    |
| 5. ___ kangaroo | 13. ___ goose     | E. kid     | N. joey      |
| 6. ___ deer     | 14. ___ swan      | F. cygnet  | O. polliwog  |
| 7. ___ goat     | 15. ___ dog       | G. infant  | P. puppy     |
| 8. ___ fish     |                   | H. calf    |              |

"\_on't let any\_ne \_oo\_ down o\_ you \_ecaus\_  
 you \_re youn\_, but set an exa\_ple for the bel\_evers  
 in speec\_, in \_onduct, in love, in \_aith and in \_urity."

1 TIMOTHY 4:12, NIV

Answer: D, O, L, K, N, B, E, A, G, M, I, H, C, F, P



### Baptismal Birthdays

- 8/18 Neveah Etter
- 8/24 Nicklaus Sowers
- 8/25 Brooke Kimball

- 8/2 Samantha Fiemeyer
- 8/14 Khloe May
- 8/27 Knox LeGrand
- 8/28 Bonnie LeGrand





## ABC Preschool News

Welcome to the Hive!! It's that time of year when we begin to prepare for the upcoming school year. Very soon the young children will be buzzing in and the school will be once again filled with laughter and learning. Last year was filled with uncertainty as we were preparing to head back to school while in a health pandemic. ABC was up to the challenge and we had a very successful year!! We kept our classes smaller, used the extra spaces throughout the church to spread out and took advantage of the wonderful outdoor spaces that allowed for nature based learning. We had in person learning the entire year so children had the opportunity to have a hands-on education to help prepare them to be successful life long learners. We made adjustments to the class routines and structure, but didn't change the content we teach and the manner in which all children are loved and cared for. As always, the children at ABC receive a Christian based education through structured and non structured activities. The word of God is taught and modeled every day!!

To proceed with our mission, ABC needs your financial and spiritual support. Please keep the school, families and children in your prayers as we teach and train young learners. In the past, St. Johns members have been very generous in providing school supplies to help reduce costs. Again this year, there will be a school supply board up at church with tags that list items that are needed. There is also a list online. Back to school supplies are more than crayons and glue. Things that we don't normally budget for to ensure health and safety are necessary as we continue with in person learning. Please carefully read the tag that lists the exact item, amount and size desired. Please don't substitute!! If you cannot find an item, please let Kim know. Please return items to church before Sunday, August 22. Thank you for your help in making ABC a great place to BEE!!



ABC will have an Open House and Registration Day on Wednesday, August 18 from 10:00 a.m. -1:00 p.m. and 5:00—7:00 p.m. We have a few openings for children ages 3-5. Classes meet 2,3,4 or 5 days per week throughout the school year (September through May). Members of St. Johns pay no registration fee. Financial assistance is available. Call the office for more information.

The COVID 19 pandemic has been hard on all people and especially hard on families with young children and their ability to financially afford a private school education. We want to be able to offer financial assistance to help cover tuition and transportation costs. Please consider donating to the scholarship fund so we are able to offer help. A full scholarship is \$405 for the year. If you want to help with the general operations of the program, please make note of it on your donation as scholarship funds are different than operational funds.



Please remember to direct your Thrivent Choice Dollars to ABC Preschool. Your dollars go directly toward the ministry of ABC Preschool which helps prepare young children socially, emotionally, spiritually and academically for future schooling. Many of the donations go toward maintaining and replacing large equipment and learning materials. The replacement of larger items is not usually written into the yearly budget. Your dollars go a long way in helping to keep the preschool up to date and helping to create an excellent learning environment for young children.



**St. Johns  
Lutheran Church**

803 West First Street  
Park Rapids, MN 56470

Phone: 218-237-9783

Fax: 218-237-9785

Website: [www.stjohnspr.org](http://www.stjohnspr.org)

*Pastor James Neubauer*

*Pastor Joel Newton*



The Lutheran Church -- Missouri Synod

Nonprofit Organization  
U.S. Postage  
Park Rapids, Minnesota  
Permit No. 6

**Address Service Requested**

**Inside this issue:**

<i>Front Entry Dedication Set for August 29</i>	<i>1</i>
<i>Noon Communion Service Continues through August</i>	<i>1</i>
<i>Join Us for Vacation Bible School</i>	<i>1</i>
<i>Youth Heading to Evergreen Park</i>	<i>1</i>
<i>Keeping the Coffee Coming</i>	<i>2</i>
<i>August Noon Concerts</i>	<i>2</i>
<i>Ladies Aid Picnic</i>	<i>3</i>
<i>Choir Schedule for August</i>	<i>2</i>
<i>E-mail Prayer Chain Update</i>	<i>2</i>
<i>Stewardship Review</i>	<i>3</i>
<i>New Look for Our Online Giving</i>	<i>3</i>
<i>What's On The Lutheran Hour</i>	<i>3</i>
<i>Baptism</i>	<i>3</i>
<i>Give Us Your Gloves</i>	<i>4</i>
<i>Sunday School Sends Stuff to Lutheran Island Camp</i>	<i>4</i>
<i>Blast from the Past</i>	<i>4</i>
<i>Main Street Living for August</i>	<i>5</i>
<i>Sunday School Page</i>	<i>6</i>
<i>ABC Preschool News</i>	<i>7</i>

