

# Panther Tracks

April 27, 2017

## St. Andrews Lutheran School

260 N. NW Highway, Park Ridge, IL 60068

[www.standrewspr.org](http://www.standrewspr.org)

847-823-9308 / Fax: 847-823-1196

Ms. Laura Boggs Principal

### The Mission Statement of St. Andrews Lutheran School

St. Andrews Lutheran School exists as the visible framework, to nourish the whole child in spiritual and academic growth by partnering with families to prepare the child for Christian living as a productive citizen of God's world.



## Calendar of Events for St. Andrews Lutheran School

Thur. 27

Fri. 28 Mid-Term 4<sup>th</sup> Quarter

Sat. 29 5:00 pm Worship with Holy Communion  
6:30 pm "Come Aboard" Dinner Dance

Sun. 30 8:30 am Worship Service  
9:45 am Sunday School  
11:00 am. Worship Service

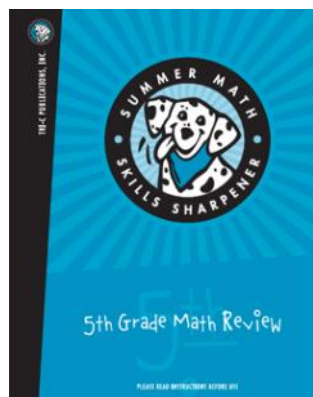
Mon. 1 MAP Testing Starts

Tue. 2

Wed. 3 Field Trip grades 6,7,8

Thur. 4

Fri. 5



**Summer Skills Workbooks** – Today is the last day to order summer workbooks! These workbooks are designed to review the concepts that were taught throughout the year. They can be purchased for \$19, with a check payable to St. Andrews (please include the word “workbook” on the memo line). They are very well done and are a very useful tool in keeping your child “fresh” over the summer. If you have any questions, please see Ms. Pivas. Please note - since they are review books, you will be ordering for the grade your child just finished (example – 2nd graders would order the 2nd grade review book). Sample books can be found in the school office. Orders are due by Wednesday, April 27th. Extra order forms could be found in the school office.

# UPcoming EVENTS

|                      |          |                                 |
|----------------------|----------|---------------------------------|
| May 3 <sup>rd</sup>  |          | Field Trip Grades 6,7,8         |
| May 7 <sup>th</sup>  | 11:00 am | Jubilate Choir Sings            |
| May 12 <sup>th</sup> | 6:00 pm  | PS/PK Art Show                  |
| May 15 <sup>th</sup> | 1:30 pm  | Character Counts Assembly       |
| May 19 <sup>th</sup> |          | Spirit Day                      |
| May 19 <sup>th</sup> |          | Graduation Banquet              |
| May 20 <sup>th</sup> | 5:00 pm  | Cherub Choir Sings              |
| May 20 <sup>th</sup> |          | Reception for Mrs. Haase        |
| May 24 <sup>th</sup> | 7:00 pm  | Graduation                      |
| May 25 <sup>th</sup> | 6:30pm   | Kindergarten Program            |
| May 26 <sup>th</sup> |          | Red, White, and Blue Day        |
| May 29 <sup>th</sup> |          | Memorial Day / No-School        |
| May 31 <sup>st</sup> |          | Field Trip K – 7                |
| June 1 <sup>st</sup> |          | PTL to provide lunch for school |
| June 1 <sup>st</sup> | 11:30 am | Early Dismissal for PS and PK   |
| June 1 <sup>st</sup> |          | Last Day for PS and PK          |
| June 2 <sup>nd</sup> |          | Early Dismissal 10:30 am        |

## Board of Christian Day School



The Board of Christian Day School meets the second Tuesday of each month at 7:00 in the Teacher's Conference Room. The next meeting will be held May 9<sup>th</sup>. All meetings are open to all school families and church members. If you would like to contact the BCDS they can be reached on Fast Direct under the staff list.



For this month's chapel offering we have collected  
\$325.11 for Lutheran Bible Translators.

---

### **NEW MEMBER INFORMATION CLASSES**

The spring is quickly approaching and the weekends are getting very busy. Therefore we will be having a little different schedule for our New Member Information Classes.



We will meet from 6pm to 7:30pm on Monday May 15 and 22. Dinner and Child care will be provided each night. Upon completion of the two classes, we will welcome new members at the 9:45am service on June 4.

If you are interested please let me know.  
[pastorhoffmann@standrewslutherschool.org](mailto:pastorhoffmann@standrewslutherschool.org)  
224.585.3101

Also, please let me know if you would like join, but are unable to attend the classes those nights.

See you there!  
Pastor Matt Hoffmann



|  |
|--|
| Angel Choir: 3's & 4's<br>Cherub Choir: K-3rd grade<br>Jubilate Choir: 4 - 8 grade |
|--|

---

## **2016 ~ 2017 ST ANDREWS CHOIR SCHEDULE**

| <b><u>Date</u></b> | <b><u>Time</u></b> | <b><u>Choir</u></b>                     |
|--------------------|--------------------|---|
| 5/7                | 11:00 a.m.         | Jubilate Choir                          |
| 5/20               | 5:00 p.m.          | Cherub Choir (Praise & Pizza to follow) |

---

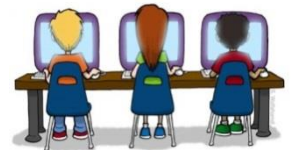
## MAP Testing Schedule - May 2017

| Monday 1       | Tuesday 2      | Wednesday 3 | Thursday 4       | Friday 5          |
|----------------|----------------|-------------|------------------|-------------------|
| 8:45 - Math K  | 8:45 - Math 2  | Chapel      | 8:45 - Math 1    | 8:45 - Reading K  |
| 10:15 - Math 6 | 10:15 - Math 3 |             | 9:30 - Math 7    | 9:30 - Math 4/5   |
| 11:30 Math 8   | 11:15 Math 6   |             | 10:30 - Math 4/5 | 10:15 - Reading 8 |
|                |                |             | 11:30 Math 8     | 11:00 - Math 6    |
|                |                |             |                  | 11:45 - Math 7    |

| Monday 8          | Tuesday 9           | Wednesday 10 | Thursday 11       | Friday 12          |
|-------------------|---------------------|--------------|-------------------|--------------------|
| 8:45 - Makeup K   | 8:45 - Reading 2    | Chapel       | 8:45 - Reading 1  | 8:45 - Makeups K   |
| 10:15 - Reading 8 | 9:30 - Reading 6    |              | 10:30 - Reading 3 | 9:30 - Reading 4/5 |
| 11:15- Reading 7  | 10:30 - Reading 4/5 |              | 11:30 - LA 8      | 10:15 - LA 8       |
|                   |                     |              |                   | 11:00 - Reading 6  |
|                   |                     |              |                   | 11:45 - Reading 7  |

| Monday 15    | Tuesday 16   | Wednesday 17 | Thursday 18 | Friday 19 |
|--------------|--------------|--------------|-------------|-----------|
| 8:45 - LA 1  | 8:45 - LA 2  | Chapel       | Makeups     | Makeups   |
| 9:30 - LA 7  | 10:15 - LA 3 |              |             |           |
| 10:30 - LA 6 | 11:15 LA 4/5 |              |             |           |

Please help your child do well on their tests by making sure they have a good breakfast the morning of the test. Avoid eating sugary foods. High-protein foods like scrambled eggs are often best for aiding concentration and minimizing fatigue.



And...Have them get a full night's sleep before the test, and wear comfortable clothing.

## **PTL News**

"Come Aboard" it is Raffle Ticket Time- Raffle tickets were due on Wednesday, April 26th. If you haven't turned yours in please do so immediately. The drawing is this Saturday, April 29th at the Dinner Dance. Your participation is appreciated.

St. Andrews PTL





**St. Andrews Block Party Saturday June 3rd-** Let's Celebrate the end of the school year with a block party. PTL will be hosting a block party in the back parking lot on Saturday June 3rd. The party will be from 6:00-8:30 p.m. but we would like to invite you to join us for worship at 5:00 p.m. in the church. We will be having a picnic and PTL will provide the meat and tableware. Please bring a side dish or dessert to share. We will have a DJ, an inflatable obstacle course, and games for kids and adults. **Please note that the back parking lot will be closed starting at 4:00 p.m. for set-up.** Please park in the Elm Street lot, on Elm Street, or in the commuter lot on Northwest Highway. Bring a lawn chair for comfort if you choose. Everyone in our church and school family is invited. Hope to see you there!  
The St. Andrews PTL

---

**PTL Request-** Now is the time of year that we look ahead and get prepared for the next school year. I have served on the PTL board for four years. The first two as the room parent coordinator and the last two as PTL President. It is now time for me to step down and allow someone new to take the reins.



PTL is currently seeking a President for the 2017-2018 school year. Our current board is returning next year with the exception of the President position and the Treasurer position. If you have any interest in serving on the board but are not quite ready to take on the President position, we would still love to have you join us. Perhaps you would consider being the Treasurer. However, it is critical that we fill the President position or many things will not happen that we have come to rely on. PTL plans many events for our students and their families throughout the school year. It would not be possible without the help of parent and staff volunteers and we value their help.

The PTL board meets monthly to plan events. We have a budget that we follow and we try to keep traditions going but also like to try new things. The PTL President steers the ship but would not get things done without the crew. A Vice President could also join the board to help the President with their duties. You and a friend can do it together! If you are interested in the position but would like to know more about the duties and the time commitment please email me at [jsheller1966@yahoo.com](mailto:jsheller1966@yahoo.com) or give me a call at 847-518-8355 and I will be happy to answer your questions. Please prayerfully consider taking on this rewarding position. St. Andrews needs you!!!

In Christ, Kathleen Heller  
St. Andrews PTL President

---

#### **POLICY OF NON-DISCRIMINATION**

St. Andrews Lutheran School admits students of any race, color, sex, disability, national or ethnic origin to all the rights, privileges, programs, and activities generally accorded or made available to students at the school. It does not discriminate on the basis of race, color, sex, or national or ethnic origin in administration of its educational policies, admissions policies, scholarship and loan programs, and athletic and other school-administered programs.

---