



**Lutheran Women**  
*in Mission*

# **Lutheran Women, One and All**

.....  
TUNE: *LSB 892, LW 495, TLH 574*

TEXT: Elmer A. Kettner

## VERSE 1



**Luth'-ran wo-men, one and all,**



**We have heard the Gos- pel call.**




## VERSE 1 continued



**We by faith have seen our Lord**

The first line of musical notation is on a single staff in G major (one flat). It contains eight notes: G4 (quarter), A4 (quarter), B4 (quarter), C5 (quarter), B4 (quarter), A4 (quarter), G4 (quarter), and F#4 (quarter). The lyrics "We by faith have seen our Lord" are aligned with these notes.

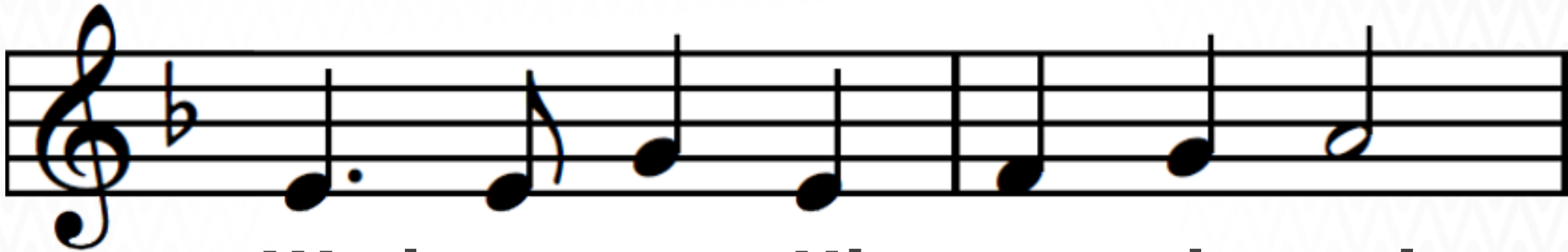


**Cru- ci- fied and then re- stored.**

The second line of musical notation is on a single staff in G major (one flat). It contains eight notes: F#4 (quarter), E4 (quarter), D4 (quarter), C4 (quarter), B3 (quarter), A3 (quarter), G3 (quarter), and F#3 (quarter). The lyrics "Cru- ci- fied and then re- stored." are aligned with these notes.



## VERSE 1 continued



**We have seen Him pay the price,**



**For our sins a sac-ri-fice.**



## VERSE 1 continued



**Him we Lord and Christ ac-claim**



**And u - nite to praise His name.**



## VERSE 2



**Luth'-ran wo-men, young and old,**



**Well we know His chal-lenge bold:**



## VERSE 2 continued



Help to take the Gos- pel light

The first line of musical notation is on a single staff with a treble clef and a key signature of one flat (B-flat). It contains two measures. The first measure has a half note on G4, followed by a quarter note on A4, and a quarter note on B4. The second measure has a half note on G4, followed by a quarter note on F4, and a quarter note on E4.



To a world in dark-est night,

The second line of musical notation is on a single staff with a treble clef and a key signature of one flat (B-flat). It contains two measures. The first measure has a half note on G4, followed by a quarter note on A4, and a quarter note on B4. The second measure has a half note on G4, followed by a quarter note on F4, and a quarter note on E4.



## VERSE 2 continued



**By ex - am - ple in the home,**



**By in - vit - ing those who roam,**





## VERSE 2 continued



**By our prayers for sin - ners lost,**



**By our gifts for mis-sions' cost.**



## VERSE 3



**Luth'-ran wo-men, coast to coast,**



**In the Lord a might-y host,**




## VERSE 3 continued



Musical notation for the first line of the verse. It features a treble clef, a key signature of one flat (B-flat), and a 4/4 time signature. The melody consists of the following notes: a dotted quarter note on G4, an eighth note on A4, a quarter note on B4, a quarter note on C5, a dotted quarter note on B4, an eighth note on A4, and a quarter note on G4.

**Let us all u - nit - ed be**



Musical notation for the second line of the verse. It features a treble clef, a key signature of one flat (B-flat), and a 4/4 time signature. The melody consists of the following notes: a dotted quarter note on G4, an eighth note on A4, a quarter note on B4, a quarter note on C5, a dotted quarter note on B4, an eighth note on A4, and a quarter note on G4.

**In the Ho - ly Trin-i - ty,**



## VERSE 3 continued



**One in faith, in hope, and love,**



**Work-ing for the Lord a - bove,**



## VERSE 3 continued



**Till, our earth-ly la - bors done,**



**We in heav'n shall all be one.**



# Lutheran Women, One and All

---

TUNE: *LSB 892, LW 495, TLH 574*

TEXT: Elmer A. Kettner

Copyright © Lutheran Women's Missionary League. All rights reserved.

*[lwml.org](http://lwml.org)*

