



# THE CELEBRATION CHRONICLES

LUTHERAN WOMEN'S MISSIONARY LEAGUE CONVENTION NEWSPAPER

► 40TH BIENNIAL CONVENTION ▼▲ MILWAUKEE, WISCONSIN ◀

THURSDAY, JUNE 22, 2023

## WELCOME TO MILWAUKEE

Anne Hartman, Chairman, 2023 Host Committee

Welcome to Milwaukee, where the locals remind us it is "cooler by the lake." This city has so much to offer, and we are excited to be hosting the 40th Biennial Convention here. The North Wisconsin District, the South Wisconsin District, and the Northern Illinois District have been preparing for your arrival, and the time is finally here. We pray that you will be blessed by all of the speakers, exhibitors, and special activities. As you enjoy this city and meet up with fellow brothers and sisters in Christ, we pray that your time here will be blessed. It has been our sincere pleasure to prepare for this convention, and we look forward to the time we "Celebrate the Lord of the Nations" with all of you! Welcome to Milwaukee!



## FOR THE LORD OF THE NATIONS

Blessed are you because God is your Lord! You are the people He has chosen, and, together, we will Celebrate the Lord of the Nations here, at the 40th LWML Biennial Convention in Milwaukee.

As you register, meet new friends, join in servant event activities, worship, study His Word, participate in the activities prepared for you, and hear news from the mission field, may you find His love and mercy around you, and may you share it with the community here and back home. You have the honor of being His hands and feet. *Now you are the body of Christ and individually members of it* (1 Corinthians 12:27).



You have come to worship our Lord, honor Him in service, and proclaim His message. I thank God for each of you. The Lord looks down from heaven. May He find us always looking to Him as we celebrate together!

Surrounded by HIS grace,

Debbie Larson, LWML President

## CONVENTION BY THE NUMBERS

**375**

Host Committee Volunteers



## OPENING WORSHIP

**4000**

Expected Worship Attendees

**60**

Volunteers helping with Worship

**309**

Singers in the Choir

**30**

Sets of Communion Ware

**555**

Pounds of clay used to make Communion Ware

**15**

Gallons of Wine for Common Cup

**2500**

Individual Communion Cups

## LET'S EAT!

### Meal Locations

Convention attendees must have their convention badge to receive their meals at any location.

- ▶ **Thursday Boxed Supper (Level 2 Foyer)**  
Available for pick up starting at 4 p.m.
- ▶ **Friday Mission Impact Boxed Lunch (Level 2 Foyer)**  
11:30 a.m.–1:30 p.m.
- ▶ **Friday and Saturday Plated Dinners (Level 1 Ballroom)**  
5 p.m.
- ▶ **Saturday Mission Impact Lunch**  
12–1:30 p.m.
- ▶ **Sunday Boxed Lunch (Level 2 Foyer)**  
Available for pick up starting at 11 a.m.
- ▶ **Concessions** are located on multiple levels and in the foyer area. They will be open starting Wednesday afternoon.



## COFFEE

### Available Early Friday & Saturday

Located on Level 3, the Roast Coffee Company, specializing in lattes, cappuccinos, cold brews, and regular coffee, will be open on Friday and Saturday mornings from 6–9 a.m. This is a great way to satisfy those early morning, pre-convention caffeine cravings — especially for those attending the early morning Bible studies.

Reminder for early risers: Bible studies are on Level 2 and coffee is on Level 3.



## CHECK-IN

### On-Site Registration Hours

- ▶ **Wednesday:** 5–8 p.m.
- ▶ **Thursday:** 7 a.m.–7 p.m.
- ▶ **Friday:** 7 a.m.–2 p.m.
- ▶ **Saturday:** 8 a.m.–2 p.m.

## GIFTS FROM THE HEART

### Drop Off Your Donations

Find the list of items being collected and the organizations they will go to support at [lwml.org/convention-central](http://lwml.org/convention-central).

#### Convention Center, Room 103C

- ▶ **Wednesday:** 4–8 p.m.
- ▶ **Thursday:** 8 a.m.–4 p.m.
- ▶ **Friday:** 7–8 a.m. and 11:30 a.m.–2 p.m.



## DISTRICT CAUCUS SCHEDULE — THURSDAY, JUNE 22, 2023

### 3:45–6:20 p.m. District Caucus Times and Room Assignments

3:45–4:30 p.m.	
District	Room No.
Eastern	201E
North Dakota	202E
Oklahoma	201C
Iowa East	201AB
Missouri	202C
Michigan	101ABC
Nebraska North	203C
Northern Illinois	203D
Pacific Southwest	203A
Southern Illinois	202B
North Wisconsin	202D
English	202A
Wyoming	201D

4:40–5:25 p.m.	
District	Room No.
Chesapeake	202B
Central Illinois	201C
Iowa West	203C
Indiana	202C
Louisiana-Mississippi	201E
Minnesota South	101ABC
Montana	203B
SELC	202A
New Jersey	203A
Ohio	201AB
Oregon	202D
Rocky Mountain	203D
South Wisconsin	201D

5:35–6:20 p.m.	
District	Room No.
Atlantic	201E
California-Nevada-Hawaii	202A
Carolinas	201D
Florida-Georgia	202B
Kansas	202C
Mid-South	202D
Minnesota North	201AB
New England	203B
Washington-Alaska	202E
Utah-Idaho	203A
Gulf States	203D
Nebraska South	203C
South Dakota	201C
Texas	101ABC

**Thursday Boxed Supper:** Box Suppers are available between 4 p.m. and 6 p.m. Those who have their district caucus from 3:45–4:30 p.m. should pick up their Box Suppers after their caucus. Those who have their caucus from 4:40–5:25 p.m. or 5:35–6:20 p.m. may pick their meals before their caucus begins (by 6 p.m.) Thank you. **You must be wearing your name badge to receive your Box Supper.**

## HELP! I Need Somebody

More than 400 volunteers from Wisconsin and Northern Illinois have been working tirelessly preparing for your arrival!

Stationed throughout the convention center and convention hotels are helpful folks who can provide directions and help you find answers to your convention questions.

**Host committee volunteers can be found wearing bright yellow t-shirts, black pants, and a button that asks the question, "How Can I Help?"**

**Crisis Assistance  
Convention Team  
Emergency Number  
463-766-2318.**



LWML is celebrating two special programs that share milestone anniversaries this year. Both the Young Woman Representatives (YWR) and Heart to Heart — Sisters of All Nations (H2H) programs will be honored as LWML celebrates with an anniversary tribute honoring the involvement of young women and multicultural women. All H2H and YWR women are invited to stop by the Information Kiosk in the registration area to receive a ribbon and instructions on how to participate in the celebration.

### Wanted!

All Young Woman Representative alumni are invited to a reunion. We are celebrating our beloved YWR program and would love for all YWRs (past and present) to join us. Come to room S202 following Friday Fest (about 9 p.m.) for refreshments and fellowship.

## Calling All Heart to Heart — Sisters of All Nations to Celebrate!

Make sure to stop at the Information Kiosk in the registration area and receive a ribbon for your nametag, a balloon, and instructions on when and how to use the balloon during the general convention session when the Heart to Heart program is recognized by President Larson.

All women who have been involved in the Heart to Heart program during its 20 year history are invited to a reception to be held on Friday, at 9 p.m., in room S201. (Check the Locator for any last-minute room changes.)

We will celebrate the women who came together during these two decades and encouraged our multicultural sisters to participate in LWML. Join us for refreshments, H2H trivia, fellowship, and a reunion of sisters.

## SERVING THE LORD WITH GLADNESS Servant Activities

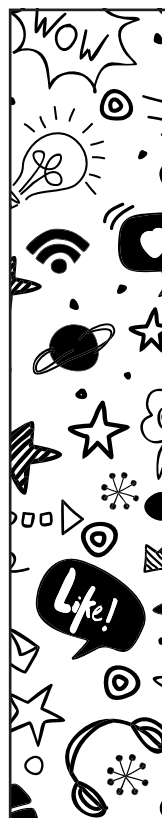
We are ready to Celebrate the Lord of the Nations and serve Him with gladness as we spend a few hours with our LWML sisters in Christ working on Servant Activities.

Be prepared for an exciting and memorable experience as we participate in projects designed to help those in need in Milwaukee, Chicago, in the US and throughout the world.

Attendees may choose from 10 activities:

1. **Packing nutritious meals** with "Feed My Kidz" for Orphan Grain Train.
2. **Packing back packs** for Orphan Grain Train.
3. **Coloring cards** for Phil's Friends.
4. **Writing cards of hope** for Refuge for Women.
5. **Making witness bracelets** for MOST Ministries.
6. **Crocheting puppets** for MOST Ministries.
7. **Writing cards of encouragement** for Missionaries.
8. **Tying fleece blankets** for Phil's Friends.
9. **Tying fleece blankets** for A Place of Refuge.
10. **Making specialized large print materials or braille books** with Lutheran Braille Workers.

Please bring your registration information to the Servant Activities table near registration to receive your pin and ribbon. Then **join us in Ballroom A, B, & C on Level 1 of the convention center for your designated time slot on Thursday, June 22 9-11 a.m., 11 a.m.-1 p.m., or 1-3 p.m. See you there!**



## HEY TEENS! You're Invited to a Special Meet and Greet

Are you between the ages of 13 and 17? If so, the Church Workers in Mission Committee invites you to the Teen Meet and Greet today (Thursday), from 1:30-2:30 p.m.

We have a special gift to welcome you to the 2023 LWML Convention!

You will find us in Room S202E.

We look forward to meeting you!



# CONVENTION OFFERINGS

## New Ways to Give

Convention offering information can be found in the convention manual on page 19. We will have four offerings, the first given to the 2023–2025 Mission Goal at Opening Worship. Offering baskets are available at all entrances, and, if you forget to deposit your gift, you may do so as you exit the session. We are providing a new and easy way to donate called Text to Give. This is an instant way to give.

*New!*

### Text to Give Option for Convention Offerings



If you choose Text-to-Give from your cell phone, follow these simple directions:

- ▶ **Connect phone to the internet.**
- ▶ **Scan the QR code or text offering code to 345345.**  
*(codes specific for each offering — found in the manual on page 19)*
- ▶ **You will receive a text message with a link —** this is completely secure.
- ▶ **Click on the link, provide the information requested:** amount of donation, designate which offering, name and contact information, and credit card information.
- ▶ **After you have donated, you will receive a confirmation email** that includes a donation receipt.

The entire process only takes minutes to complete!

## COMMUNION WARE Created for Opening Worship

Worshiping the Lord of the Nations and sharing communion with thousands of their closest friends is a convention highlight for many attending the opening worship service.

Preparation for this event takes much effort from a dedicated team of women and men. Thus, planning began almost two years before tonight's event. It has become a practice for the national convention host committee to commission a local artist to create communion ware to commemorate the occasion.



This year, potter Andee Warren was selected to create 30 matching sets of communion ware. Andee suggests that most artists create works to be admired from afar, but feels pottery is best admired while eating. She finds no greater joy than knowing that her pottery is used and enjoyed regularly. Her philosophy is that the fusion of her pottery with food brings a greater appreciation of the meal. It is appropriate then, that more than 4,000 people will use her creations to share in a profound meal this evening.

Please take a moment to view a communion set on display near the photo op station in the exhibit hall.

## DID YOU KNOW?

### Communion Ware Terminology

- ▶ **Chalice:** common cup
- ▶ **Flagon:** pitcher which holds extra wine
- ▶ **Paten:** wafer plate
- ▶ **Fair Linens:** a long white cloth that covers the top of the altar
- ▶ **Superfrontal:** a cloth which is placed over the top of an altar and hangs down a few inches over the frontal



## Celebrate the Lord of All LANGUAGES

During the regular sessions, convention participants requesting sign interpreters will find the designated seating area to the right of the stage.

Booths in the exhibit hall being staffed — at least partially — by sign interpreters are the LWML Special Ministries Task Force, Lutheran Deaf Mission Society, and World Lutheran Deaf Outreach.

Luncheons with sign interpreters present are “Lunch with My Friends” on Friday and Rev. Kevin Robson, LCMS Chief Mission Officer’s lunch on Saturday.

Additional information about the exhibit booths and luncheons can be found in the convention manual.



The altar guild from Milwaukee's historic Trinity Lutheran Church (est. 1847) are pleased to contribute their fair linens, candles, and superfrontal to beautify the altar this evening.



## CELEBRATING THE GIFT OF FAMILY

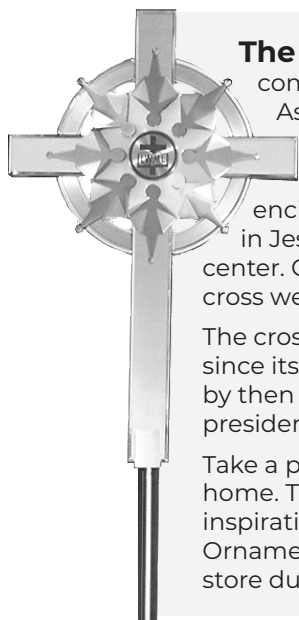
The LWML cross will lead the procession to begin our Thursday worship service as, together, we “Celebrate the Lord of the Nations.” President Debbie Larson’s family is here to join in the celebration.

Serving as crucifer is Tim Larson, President Debbie’s son, who is the owner of Tim Larson Construction based in Lidgerwood, North Dakota.

Other family members are serving this weekend. Assisting as one of President Debbie’s pages during convention sessions is Tim’s wife, Eileen Larson. Tim and Eileen live in Lidgerwood with their sons Layne, Brenden, and Logan. Eileen is a high school principal.

President Debbie’s daughter, Mandy Redfield, will also serve as her mother’s convention page. Mandy is from the Rocky Mountain District, lives in Berthoud, Colorado, and is a mechanical engineer and the Director of Facilities for the Greely School District.

President Debbie shared, “It’s wonderful to have family willing to participate and experience this convention with us.”



**The Processional Cross** was commissioned through a grant from Aid Association for Lutherans in celebration of the 50th Anniversary of LWML.

It features figures, hand-in-hand, encircling the cross, reflecting our oneness in Jesus Christ. The LWML seal is at the center. Crafted from silver and bronze, the cross weighs a staggering 42 pounds!

The cross has been present at every convention since its debut in 1991, when it was first carried by then Housing Chairman (future LWML president) Jan Wendorf.

Take a piece of LWML history home. The cross design is the inspiration for the new LWML Ornament available in the LWML store during convention. ►



## GRACE PLACE Prayer Chapel

The Grace Place Prayer Chapel is a special area where convention attendees can find a quiet, calming environment to pray, meditate, and take a moment to get away from the rush of convention activities.

The prayer chapel will have a pastor, as well as a hostess, available to offer specific prayers, and the pastor will be available for counseling. Prayer requests turned in at the prayer chapel or the information desk will have prayers offered in the prayer chapel.

The Prayer Chapel, located in Room 103D, is open from 8 a.m.–noon and 1–5 p.m. Thursday, Friday, and Saturday.

### Calling all Shutterbugs

Have a great photo to share?

Text your photo to 314.754.9299.

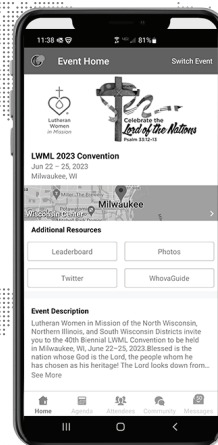
In 25 words or less, share the names of those in the photo, their district(s), and the photo’s convention story.



**Watch the 2023 convention via livestream.** Scan the QR code for video streaming during convention. Share with friends at home. For more convention coverage online, go to [livestream.com/thelwml](https://livestream.com/thelwml)

## Download the Whova Event App

View convention information  
and network with other attendees!



1. Search for **“Whova”** in the App Store or Google Play and **Install**.
2. **Sign in** using the email address you used for convention registration, create a password, and type in your name.

## HAPPENINGS IN THE HALL

### Special Ministries Task Force

**(SMTF)** welcomes ALL Blind and Visually Challenged, Deaf and Hard of Hearing, and Intellectually and Developmentally Challenged. Visit our booth (#103), meet sisters, and learn how your LWML group can include ALL who are precious in God's sight. You will be "glowing."

Stop by the **Christian Life** booth (#113) to participate in the Prayer Banner Weaving along with an opportunity to win one of four new books!

Come to Booth (218) and Visit the **ITC Technology Lab!** The LWML Information Technology Committee (ITC) is here to support LWML Districts with their technology needs. Want to chat more about social media or websites? Have questions about how to use technology in your district? Come by and chat!

The **Mission Grants Committee** (#109) is Celebrating the Lord of the Nations by recognizing the 460 mission grants reaching 83 countries in the 80-year LWML history! Come see the world map where mission grants have made an impact and learn about resources that will deepen your understanding of the ministries supported.

Just GO into the world and spread the Word to all the nations. Come to the **Gospel Outreach** booth (#109), and state your mission action as you complete a conversation bubble that begins with "Just GO." Gospel Outreach Resources will be shared to guide you in ways of service and Gospel proclamation.

Visit the **Group and Leader Development Committee** booth (#312) to find out more about their resources, including the new one — Lutheran Women in Mission FOCUS on Jesus.

Stop by the **Heart to Heart — Sisters of All Nations** exhibit (#105) for a time for learning and fun!

## EXHIBIT HALL MAP

LWML Committee Booth Assignments	Booth #
Archivist-Historian .....	452
Christian Life Department.....	113
Church Workers in Mission .....	204
Committee on Young Women .....	208
Gifts of Love & LCMS Foundation .....	211
Gospel Outreach Department.....	109
Group and Leader Development.....	312
Heart to Heart — Sisters of All Nations .....	105
Host Committee Photo OP .....	209
Information Technology Committee .....	218
Official Publications Committee.....	219
Public Relations .....	212
Special Ministries Task Force .....	103
Structure Committee .....	310
LWML Store.....	305

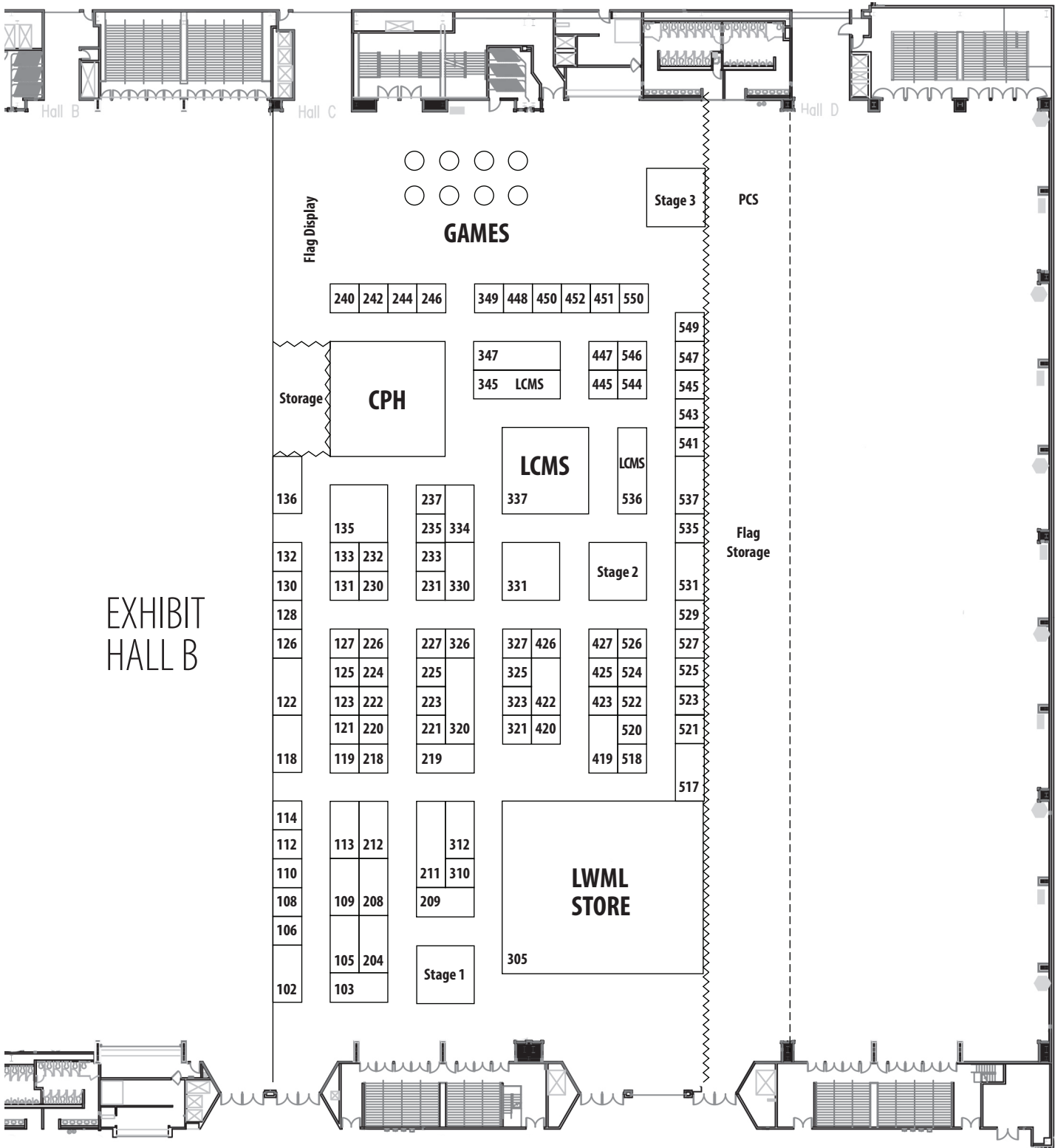
Exhibitor Booth Assignments	Booth #
4Kenyas Kids .....	231
A Place of Refuge .....	544
AbleLight Inc. ....	349
Belize Mission Society .....	246
Camp Restore Detroit .....	323
Capstone Ministries .....	527
Christian Friends of New Americans.....	242
Christ's Care for Children-Kenya/Project 24 ..	223
Concordia Deaconess Conference .....	227
Concordia Historical Institute .....	235
Concordia Publishing House.....	CPH
Concordia Seminary, St. Louis .....	237
CTFSW Food & Clothing Co-op.....	334
Concordia University Chicago .....	327
Concordia University Nebraska .....	330
Concordia University St. Paul.....	422
Concordia University Texas .....	426
Concordia University WI & AA.....	331
Dakota Boys and Girls Ranch .....	423
Dignity4Girls .....	550
Disaster Response-Trinity, Tyler, TX.....	128
Ephphatha Lutheran Mission Society .....	523
Forged by Fire .....	447
Forged by Fire Trailer .....	347
Friends of Lutheran Radio United Kingdom....	420
Gifts for All God's Children.....	549
Global Lutheran Outreach .....	121
GOOD NEWS Worldwide, Inc. ....	526
Hmong International Mission.....	543
India Bible Study .....	126
India Transformed!.....	522
International Student Ministry, Inc.....	325
Journeys Lutheran School .....	131
KFUO Radio .....	419
LAMP Ministry, Inc. ....	225
Lead4Child .....	123
Legacy Deo .....	220
Lutheran Bible Translators .....	226

Exhibitor Booth Assignments	Booth #
Lutheran Braille Workers .....	135
Lutheran Center for Religious Liberty .....	541
Lutheran Church Charities .....	102
Lutheran Church Extension Fund .....	320
Lutheran Confessional Church Pakistan.....	132
Lutheran Counseling & Family Services of Wisconsin .....	240
Lutheran Deaf Mission Society .....	127
Lutheran Diaconal Association.....	133
Lutheran Family Service .....	108
Lutheran Federal Credit Union .....	326
Lutheran Heritage Foundation.....	529
Lutheran Hour Ministries .....	537
Lutheran Hour Ministries Float Committee ....	535
Lutheran Indian Ministries .....	125
Lutheran Special Education Ministries .....	425
Lutheran Urban Mission Initiative, Inc.....	451
Lutheran World Relief .....	517
Lutherans for Life.....	114
Lutherans in Medical Missions .....	244
Medical Mission Teams .....	445
Mercy Holistic Ministry .....	222
Ministry in Mission .....	545
Mission Nation Publishing .....	524
Mission of Christ Network.....	232
MOST Ministries .....	518
Orphan Grain Train.....	106
Phil's Friends .....	110
POBLO International.....	521
Redeeming Life Outreach Ministries.....	547
Saint Paul Lutheran High School .....	427
Salam Ministries .....	224
SID Prison Ministry .....	448
South Asia Lutheran Mission .....	233
St. Paul Lutheran Hmong Outreach .....	525
The Apple of His Eye Mission Society .....	230
The Lutheran Church—Missouri Synod.....	337, 536
The Lutheran Church—Missouri Synod LERT Trailer .....	345
Thrivent .....	531
Time of Grace .....	136
Visit Omaha .....	321
Visual Faith Ministry .....	118
Voice of Care .....	450
Water and the Word .....	520
Wendysue Music.....	119
Women's Leadership Institute.....	546
World Lutheran Deaf Outreach .....	221
Worship Anew .....	122
Y4Life.....	112
Ysleta Lutheran Mission Human Care .....	130



# COME AND SEE!

LWML invites convention attendees to come and see all the special exhibits in the Exhibit Hall. In addition to the LWML Committee exhibits, we are blessed to have 85 non-LWML exhibitors, including our Concordia universities and two seminaries, as well as a variety of many unique ministries. We welcome 19 new exhibitors!



## CONVENTION ACTIVITY LOCATOR

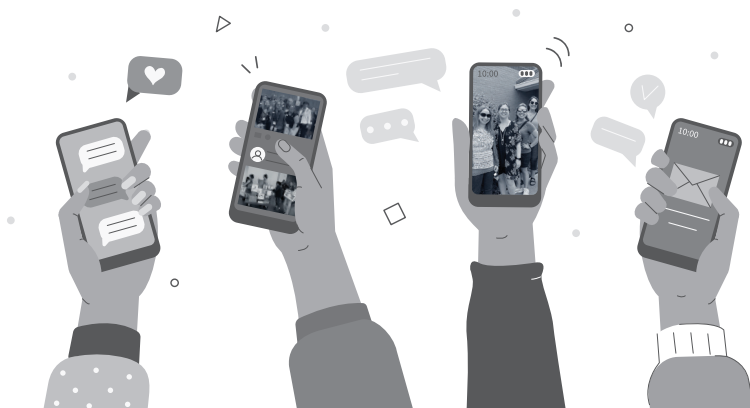
ACTIVITY	ROOM	LEVEL	DATE	TIME
Banner Procession Rehearsal (DPs only)	Banner Room, Exhibit Hall CD	3	Thurs., June 22	8:30 a.m.
Banner Procession Assemble (BOD, DPs, YWRs)	Back of General Assembly Hall AB	3	Fri., June 23	7:45 a.m.
Banner Procession with BOD	General Assembly Hall AB	3	Fri., June 23	8:15 a.m.
Banner Room	Pipe & drape, Exhibit Hall CD	3	June 22–25	Entire Convention
Bible Studies (Wake Up with the Word)				
Michelle Diercks	S201	2	Fri., June 23	6:45–7:45 a.m.
Lindsay Hausch	S203	2	Fri., June 23	6:45–7:45 a.m.
Cynthia Khan	S202	2	Fri., June 23	6:45–7:45 a.m.
Rev. Robert L. Mundahl	S203	2	Sat., June 24	6:45–7:45 a.m.
Donna Snow	S202	2	Sat., June 24	6:45–7:45 a.m.
Rev. Kris Whitby	S201	2	Sat., June 24	6:45–7:45 a.m.
Blood Drive	Ballroom D	1	Thurs., June 22	9 a.m.–3 p.m.
Choir Rehearsal	General Assembly Hall AB	3	Thurs., June 22	Noon–2 p.m.
Choir Sign-in	Grand Ballroom Pre-Function	1	Wed., June 21 Thurs., June 22	5–8 p.m. 7 a.m.–7 p.m.
Communication Room	S10IDE	1	June 22–25	Entire Convention
Communion preparation, cleaning & packing	Service Room	1	June 21–24	Wednesday–Saturday
Concessions	Exhibit Hall CD	3	Thurs., June 22  Fri., June 23  Sat., June 24	9 a.m.–2 p.m. 4–6 p.m. 11:30 a.m.–2 p.m. 5–7 p.m. Friday Fest 7–9 p.m. 11:30 a.m.–2 p.m.
Concessions	Foyer — Roast Coffee Stand	3	Fri., June 23 Sat., June 24	6–9 a.m. 6–9 a.m.
Concessions	Foyer — Pizza Stand	3	Thurs., June 22 Fri., June 23 Sat., June 24	11 a.m.–2 p.m. 11 a.m.–2 p.m. 11 a.m.–2 p.m.
Convention Sessions	General Assembly Hall AB	3	June 22–25	Entire Convention
Delegate Orientation	Front of General Assembly Hall AB	3	Thurs., June 22	2:30–3:30 p.m.
District Caucuses	Room S101 ABC Rooms S201, S202, S203 A-E	1 2	Thurs., June 22	3:45–6:20 p.m.
Exhibits	Exhibit Hall CD	3	Thurs., June 22 Fri., June 23	9 a.m.–6 p.m. 11:30 a.m.–2 p.m.
Exhibits-Friday Fest	Exhibit Hall CD	3	Fri., June 23 Sat., June 24	5–9 p.m. 7–9 p.m. Noon–2 p.m.
First Aid Room	S103A	1	June 21–25	Entire Convention during hours of meetings & activities
Food Services Orientation	S102E	1	Thurs., June 22	2–2:30 p.m.



ACTIVITY	ROOM	LEVEL	DATE	TIME
Friday Dinners (By Invitation Only)				
Past District Presidents	S201	2	Fri., June 23	5–7 p.m.
Teens and Parents	S203	2	Fri., June 23	5–7 p.m.
YWRs with LWML President	S202	2	Fri., June 23	5–7 p.m.
Friday Mission Impact Speakers				
A. First-Timers with President Debbie	Ballroom B	1	Fri., June 23	11:30 a.m.–1:30 p.m.
B. Jan Struck, Abby Goehring, and Dr. Dina Vendetti	Ballroom D	1	Fri., June 23	11:30 a.m.–1:30 p.m.
C. Rev. Dr. Steven Schave, Executive Director of LAMP	S202	2	Fri., June 23	11:30 a.m.–1:30 p.m.
D. Rev. Craig Muehler, Chaplain, LCMS Ministry to the Armed Forces	S201	2	Fri., June 23	11:30 a.m.–1:30 p.m.
E. Phil Zielke, President of Phil's Friends	Ballroom A	1	Fri., June 23	11:30 a.m.–1:30 p.m.
F. Linda Gage and Carol von Soosten, LWML Gift Planning Counselors	S203	2	Fri., June 23	11:30 a.m.–1:30 p.m.
G. Lunch with My Friends	Ballroom C	1	Fri., June 23	11:30 a.m.–1:30 p.m.
Gifts from the Heart — Collection and packing area	S103C	1	Wed., June 21 Thurs., June 22 Fri., June 23	4–8 p.m. 8 a.m.–4 p.m. 7–8 a.m.
Heart to Heart — Sisters of All Nations District Leader Training	Hilton Hotel Kilbourn Room: meeting Oak Room: meals		June 22–25	Entire Convention
Information Kiosk	Rotunda Corner of Wisconsin Ave. & Vel R. Phillips Ave.	1	June 22–25	Entire Convention
Lost and Found	S103B	1	June 22–25	Entire Convention
Luggage Storage	S103B	1	Sun., June 25	8 a.m.–1 p.m.
LWML Store	Exhibit Hall CD	3	Thurs., June 22 Fri., June 23 Sat., June 24	9 a.m.–6 p.m. 11:30 a.m.–2 p.m. 5–9 p.m. Noon–2 p.m.
Meals – Boxed	Foyer	2	Thurs., June 22 Fri., June 23 Sun., June 25	4–6 p.m. 11:30 a.m.–1:30 p.m. 11 a.m.–1 p.m.
Meals – Catered/Plated Dinners	Ballroom A, B, C, D	1	Fri., June 23 Sat., June 24	5–7 p.m. 5–7 p.m.
Mission Riverwalk	Corner of Vel R. Phillips and Wisconsin Avenues	1	Sat., June 24	4:30–5:30 p.m.
Mission Riverwalk Pledge Walk Sign in	Grand Ballroom Pre-Function	1	Wed., June 21 Thurs., June 22 Fri., June 23 Sat., June 24	5–8 p.m. 7 a.m.–7 p.m. 7 a.m.–2 p.m. 8 a.m.–Noon
Pastors Gathering/Robing Room	S102E	1	Thurs., June 22 Sun., June 25	Noon–10 p.m. 6:30 a.m.–Noon

ACTIVITY	ROOM	LEVEL	DATE	TIME
Prayer Service & Prayer Chapel Dedication Prayer Chapel (Grace Place)	S103D	1	Thurs., June 22 Thurs., June 22 Fri., June 23 Sat., June 24	7:30–8 a.m. 8 a.m.–6 p.m. 8 a.m.–6 p.m. 8 a.m.–6 p.m.
Procession Assemble: Past LWML Presidents, Mission Flags: YWRs, H2H Sisters, Teens, Camp Celebrate	North of the hall in from Exhibit Hall doorway	3	Sat., June 24	7:45–8 a.m.
Procession: Past LWML Presidents, Mission Flags: YWRs, H2H Sisters, Teens, Camp Celebrate	General Assembly Hall AB	3	Sat., June 24	8:30 a.m.
Properties	S102D	1	June 21–25	Entire Convention
Receptions				
H2H Sisters	S201	2	Fri., June 23	9–10:30 p.m.
Lutheran Braille Workers	S203	2	Fri., June 23	9–10:30 p.m.
Young Woman Reps (YWR)	S202	2	Fri., June 23	9–10:30 p.m.
Past EC/BOD (Invitation only)	Hilton Hotel: Walker Room		Sat., June 24	9–10:30 p.m.
Lutheran Hour Ministry	S202	2	Sat., June 24	8:30–10:30 p.m.
Registrar Office	Lobby	1	June 21–24	Registration Hours
Registration	Pre-Function Area	1	Wed., June 21 Thurs., June 22 Fri., June 23 Sat., June 24	5–8 p.m. 7 a.m.–7 p.m. 7 a.m.–2 p.m. 8 a.m.–2 p.m.
Registration Orientation	Pre-Function Area	1	Wed., June 21	3:30–4 p.m.
Saturday Dinner (By Invitation Only) Legacy Circle	S202	2	Sat., June 24	5–7 p.m.
Saturday Evening Entertainment	General Assembly Hall AB	3	Sat., June 24	7:30–9 p.m.
Saturday Mission Impact Luncheons				
H. Rev. Kevin Robson, LCMS Chief of Mission Officer	S202	2	Sat., June 24	Noon–2 p.m.
I. Rev. Dr. Robert Scudieri, Retired CEO of Mission Nation Publishing	S203	2	Sat., June 24	Noon–2 p.m.
J. Rev. Bart Day, President & CEO of Lutheran Church Extension Fund	Ballroom B	1	Sat., June 24	Noon–2 p.m.
K. Kurt Buchholz, President & CEO of Lutheran Hour Ministries	Ballroom C	1	Sat., June 24	Noon–2 p.m.
L. Rev. Ed DeWitt, President & Chairman of the Board, Redeeming Life Outreach Ministries	S201	2	Sat., June 24	Noon–2 p.m.
M. Rev. Doua Xiong, Pastor to the Hmong in the San Joaquin Valley of California	Ballroom A	1	Sat., June 24	Noon–2 p.m.
N. Rev. Dr. Gregory Seltz, Executive Director of the Lutheran Center for Religious Liberty	Ballroom D	1	Sat., June 24	Noon–2 p.m.
Servant Activities Sign In	Ballroom Pre-Function	1	Wed., June 21	5–8 p.m.

ACTIVITY	ROOM	LEVEL	DATE	TIME
Servant Connections (Activities)	Ballroom ABC	1	Thurs., June 22	9–11 a.m. 11 a.m.–1 p.m. 1–3 p.m.
Shirt Sales	Grand Ballroom Pre-Function	1	June 22–25	Open when not in session
Teens Meet & Greet	S202E	2	Thurs., June 22	1:30–2:30 p.m.
Tours Departures	Hilton Hotel	6 <sup>th</sup> Street Entrance	Wed., June 21 Thurs., June 22 Sun., June 25 Mon., June 26	Please arrive 15 minutes before scheduled tour.
Tours Information	Grand Ballroom Pre-Function Area	1	June 21–26	Open when not in session
Transportation Information Airport Shuttle to Airport Please arrive 15 minutes before your scheduled pick-up time.	Pre-Function Area N Vel R. Phillips Ave. side	1	Sun., June 25	Should you need a shuttle, check at the Transportation Information Table.
Transportation Information West Side Hotel Shuttles	Pre-Function Area N Vel R. Phillips Ave. side	1	Wed., June 21 through Sun., June 25	TBD
Transportation Information District Charter Motorcoaches	Pre-Function Area Wells Street side	1	Wed., June 21 through Sun., June 25	Check your District Schedule
Usher/Page Orientation	General Assembly Hall AB	3	Thurs., June 22	3 p.m.
Wheelchair Storage and Pickup	Lobby	1	Wed., June 21 Thurs., June 22 Fri., June 23 Sat., June 24 Sun., June 25	Schedule posted at Wheelchair Station
Workers' Room/Special Dress	S102ABC	1	June 22–25	Entire Convention
Worship Rehearsal for Clergy HC Assistants	General Assembly Hall AB	3	Thurs., June 22	3:30 p.m.
Young Woman Reps (YWR) Gathering Place	Hilton Hotel	Juneau Room 5 <sup>th</sup> Floor	June 22–25	Entire Convention
YWR Servant Activity (Gifts from the Heart Area)	S103C	1	Wed., June 21 Thurs., June 22	4–8:30 p.m. 6:30 a.m.–2 p.m.



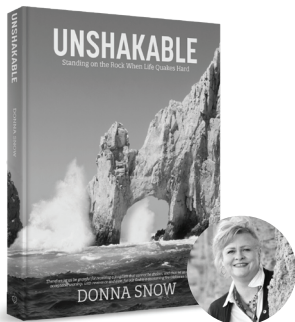
## OFFICIAL HASHTAG: #LWMLCONVENTION2023

**Posting photos or videos from your convention experience on social media? Share them with us!**

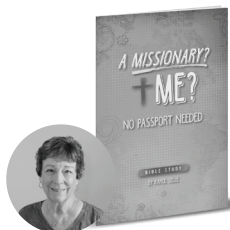
Use the official hashtag when creating your posts. Our social media team will be sharing some of the attendees posts throughout convention.

Follow along on Facebook @TheLWML or Instagram @lwmlnational.

# Book Signings



**NEW FROM DONNA SNOW**  
**UNSHAKABLE**  
 Standing on the Rock When  
 Life Quakes Hard



**NEW FROM KAROL SELLE**  
**A MISSIONARY? ME?**  
 NO PASSPORT NEEDED



**NEW**  
**LIFE AFTER ...**  
 Devotions for Widows



## STORE

Come and shop at the LWML Store located in the Exhibit Hall.

### SIGNING SCHEDULE

Check out the store for additional surprise signings

#### UNSHAKABLE

**Donna Snow**

Thurs. 2–4 p.m.  
 Fri. 11:30 a.m.–12:30 p.m.;  
 7:30–8:30 p.m.  
 Sat. 1–2 p.m.

#### A MISSIONARY? ME? NO PASSPORT NEEDED

**Karol Selle**

Thurs. 3–4 p.m.  
 Fri. 6:30–7:30 p.m.

#### LIFE AFTER ... Devotions for Widows

**Kay Kreklau**

Thurs. 10–11 a.m.  
 Fri. 12–1 p.m.  
 Sat. 1–2 p.m.

**Lois Anderson**

Thurs. 10–11 a.m.; 3–4 p.m.

**Carolyn Blum**

Thurs. 12–2 p.m.  
 Fri. 1–2 p.m.

**Linda Koch**

Thurs. 12–1 p.m.  
 Fri. 1–2 p.m.

**Deaconess Laura Jostes**

Thurs. 2–3 p.m.  
 Fri. 1–2 p.m.

### LWML Store Hours

Thursday 9 a.m.–6 p.m.  
 Friday 11:30 a.m.–1:45 p.m.,  
 5–9 p.m.  
 Saturday 12–2 p.m.

The Lutheran Women in Mission store is full of new items.

Check out the Store flyer in your convention tote for details and prices. Some are exclusively available here at convention!

**Shop early for the best selection.**

### PRAY WITHOUT CEASING

(LSB: Altar Book, Page 428)

Almighty and gracious God,  
 You want all to be saved and  
 to come to the knowledge of  
 the truth. Magnify the power of  
 the Gospel in the hearts of Your  
 faithful people that Your Church  
 may spread the good news of  
 salvation. Protect, encourage,  
 and bless all missionaries who  
 proclaim the saving cross that  
 Christ, being lifted up, may draw  
 all people to Himself, who lives  
 and reigns with You and the Holy  
 Spirit, one God, now and forever.



THE  
**LUTHERAN CHURCH**  
 MISSOURI SYNOD

Sponsor of the 2023 LWML  
 Convention daily newspaper,  
*The Celebration Chronicles*.  
 Thanks be to God for the continued  
 faithfulness of the LWML.



## THE CELEBRATION CHRONICLES

LUTHERAN WOMEN'S MISSIONARY LEAGUE CONVENTION NEWSPAPER ▶ 40TH BIENNIAL CONVENTION ▼ MILWAUKEE, WISCONSIN ◀

The *Celebration Chronicles* are published during the convention by the LWML Communication Department. Vice President of Communication: Kathy Pavelock; *Lutheran Woman's Quarterly* Editor-in-Chief: Sheila Lutz; Newspaper Editor: Amy Gill; Graphic Designers: Nichelle Dykema, Cheryl Rackov; Reporters: Carolyn Blum, Linda Guteres, Eden Keefe, Sheila Lutz, Shari Miller, Becky Wehrspann; Reviewers Carolyn Blum, Sheila Lutz, Shari Miller, Rev. Kenton Wendorf.

