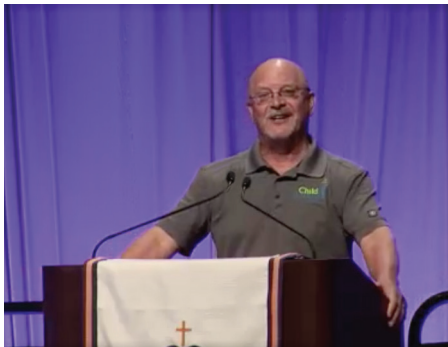


MITES PROVIDE MEDICAL/ SPIRITUAL NEEDS ABROAD



The Rev. Jeffrey Mueller spoke to the convention on Saturday afternoon concerning his mission work in Guatemala. He established the Child Beyond International Mission to provide for educational and spiritual support to children who live in poverty in Guatemala. Currently the mission houses 20 children, teaching them and fostering their faith to strengthen their spiritual foundation so that they may have a future with hope. Providing this home was the mission for the first five years of Child Beyond International.

During the biennium of 2019–2021, LWML funded the purchase of a school bus to be repurposed into a medical and dental facility on wheels that could travel from village to village. Rev. Mueller

realized that people would not come to know Jesus if they were more concerned with their medical needs. He shared that the bus has been purchased. Once renovated, it will be stocked with necessary supplies and staffed with two crews of trained personnel to address needs as they arise. Before meeting medical or dental needs, the staff plans to pray with patients for their current needs. Following prayer, villagers will be assisted in their physical needs, and then a spiritual team will follow up with them to invite them to the local Lutheran church.

This plan, while visualized well, has been delayed due to the pandemic. Guatemala, like so many other countries, ceased many operations as people were infected with the virus. The mission's bus mechanic took ill and spent months recuperating. When work resumes, the bus renovation will be completed, and the outreach mission work will be overseen by the Rev. Dr. Ebry Orozco and his wife Liz. Prayers and workers are needed to bring this bus with medical and dental healing to the villages overwhelmed with these concerns, thus creating a climate for spiritual growth throughout the area.

OVER A THOUSAND WALK FOR MISSIONS



The Photo Finish Mission Walk was a huge success! It began with prayer by Rev. Mark Moog from the LWML Indiana District, followed by the ceremonial Call to Post, performed by a local trumpeter from the University of Kentucky. Lutheran Church Charities Comfort Dogs were present to help cheer on the almost 1,100 participants who walked a 1.5-mile loop down Main Street, around Thoroughbred Park, and back to the start. Walkers were treated to bluegrass music at Thoroughbred Park, performed by the Lueker family children.

Participants enjoyed the beautiful city of Lexington, the painted murals, water features, and historic markers. As they strolled alongside local walkers, they shared the path and the love of Jesus, singing and praising the Lord.

Photo Finish Mission Walk Chairman Anne Boerboom stated that the total pledges and donations for the 2021–2023 mission goal will be announced Sunday morning.



NEWLY ELECTED OFFICERS

Vice President of Christian Life: Susan Brunkow

Vice President of Communication: Kathy Pavelock

Vice President of Gospel Outreach: Karen Morrison

Recording Secretary: Brenda Piester

Pastoral Counselor: The Rev. Gary Piepkorn

Nominating Committee: Kaye Wolff, Chairman; Lois Teinert, Janis McDaniels, Lisa Asmus, Melissa Salomón

EARLY MORNING BIBLE STUDY

Early morning Bible study is an opportunity to rise, shine, and place God's Word first in the day. On Saturday morning, meeting rooms in the convention center buzzed with sleepy chatter among those attending the several Bible studies offered.

Coffee, muffins, and water in hand, over 30 participants eagerly looked forward to the Bible study "Born to Run ... Away, Reborn to Run with God." Bible study author Rev. John Heckmann roused all to attention with a bold "Good morning!" centering the crowd's hearts and minds on

the Word. Rev. Heckmann compared the running of the Kentucky Derby to the running of our lives in Christ. A champion horse is bred well, fed the right diet, and supplied with all the training necessary to win the race.

We, too, are bred well, having been created in God's image, fed with the Word, and provided with trainers (family, pastors, and mentors) to successfully run our race toward our crown of life. Just as a horse may break down, so we, too, can break down in faith. Through many biblical examples, participants learned that while

we are born sinful, through Baptism and the Word, we run with Christ toward the eternal prize of life forever in heaven.

How are we trained? Through the Word. What must we do? Remain steadfast in the Word. Where will we find ourselves in the end? In the heavenly winner's circle, having received our crown of life already prepared for us by Jesus Christ (2 Timothy 4: 7-8). Secure in our understanding of how we are equipped to *press on toward the goal for the prize* (Philippians 3:13-14), those in attendance closed their Bibles, reassured of their Savior's love for them.

FROM POCKETS OF LOVE (PRELIMINARY TOTALS)

CONVENTION OFFERING #1

LWML Mission Goal 2021-2023

The standing rules of the Lutheran Women's Missionary League state that the offering received at the convention communion service shall be designated as a contribution to the mission goal of the LWML.

Total Offering: \$41,789.97

CONVENTION OFFERING #2

King's Community Outreach in Fort Wayne, Indiana

Help King's Community Outreach as they reach out with the Gospel to those in the inner city struggling to survive and help them to run the race and look to Jesus.

Total Offering: \$26,669.02

CONVENTION OFFERING #3

Gifts for All God's Children's Connecting Kids to Christ Center in Detroit, Michigan

Providing Sunday school, one-on-one tutoring, summer camps, and year-round Christ Center events to at-risk children and training for other churches that desire to replicate the program in their congregations.

Total Offering: \$17,640.47

CONVENTION OFFERING #4

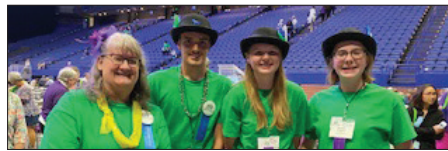
POBLO International Ministries in Clinton Township, Mich.

Train congregations to begin outreach to non-Christian communities in their neighborhoods and to support sharing the Gospel by inviting ethnic populations to become part of LCMS congregations.

Total Offering: _____

Mission Pledge Walk: \$88,417.42

BEHIND THE SCENES: TEEN PAGES KEEP MESSAGES MOVING



Pages are those who assist LWML leaders to keep information moving among officers and voting members during convention business sessions, and they serve at every LWML convention. The President's personal page stays near to her and carries messages to and from the stage. LWML President Debbie Larson's pages this week are her daughter, Mandy Redfield, and her daughter-in-law, Eileen Larson.

In addition, three teenagers from the convention host districts serve as pages on the convention floor.

Evan McBride, Hobart, Ind., and Mina and Anneka Wesche, Wauseon, Ohio, had similar responses when asked why they volunteered to serve as pages. Evan said, "My whole family was coming. My mom asked me if I wanted to do something

special while at the convention. I said, 'Sure!'"

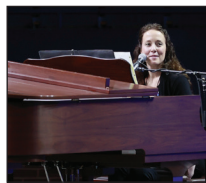
Mina replied, "I was 'voluntold.' My family was going and Grandma said, 'You and Anneka can be pages.'"

When told she could serve as a page, Anneka responded, "Sounds interesting. What do they do?"

Pages deliver written notes to voting members, pastors, and YWRs on the convention floor, following several guidelines: they verify that the notes they deliver include the recipient's name; they do not walk in front of the stage; and they do not run personal errands for anyone.

All three pages found the position exciting as they learned how an LWML convention unfolded. They were uplifted when realizing how mites and mission grants touch people with the Gospel. Anneka, a multi-sport athlete, declared, "This opportunity to serve in the Rupp Arena is cool!"

ELINOR PAULISON, SONG LEADER



Elinor's love for Christ is seen in her music for worship and also when serving as the song leader for the LWML convention!

An excellent vocalist and pianist, she loves hymns as much as contemporary Christian songs. Currently living and serving as the Director of Worship at Peace With Christ Lutheran Church in Aurora, Colo., Elinor's prior employment has included being a

Director of Christian Education and a Director of Parish Music in Michigan and Illinois.

"I have a passion for telling others about the faithfulness and love of God in Jesus through music," Elinor shared. Her love for spreading the Gospel is not limited to music. She and her husband support and visit orphanages in Haiti and in St. Petersburg, Russia, through Orphan Outreach. Elinor believes you should work hard at whatever you do, and she does!

FRIDAY'S LUNCH WITH FRIENDS

What better way is there to meet up with friends and make new friends than to share a meal? During Friday's Lunch with Friends, women and men shared their meal and their convention experiences, past and present.

Paul and Paulette Huber, from the LWML North Dakota District, came to convention on a bus with 12 riders from North Dakota and 37 from Minnesota. They shared the bus ride with Phyllis Lentz, who was attending her 20th convention.

Sitting at the same table were Susan Eickhoff, Phyllis Bouic, and Suzanne Toth, all from Milford Center, Ohio. Susan is a first-timer and worked as an usher at Thursday evening's worship service. She enjoyed the Bible studies and hearing the pastors and speakers at the convention. Phyllis has been involved in her congregation's LWML for many years and remarked that she enjoys the fellowship of Christian women. Having served as a delegate from the LWML Ohio District to the Minneapolis Convention in 1999, Phyllis has held several offices, including

Zone President. Suzanne attended her first national convention in Mobile and is one of the volunteers this time, wearing green at this convention.

From Cass City, Michigan, Tracy Schulz served as a worship service usher. She was a Young Woman Representative (YWR) at the Tampa Convention (2005) and has been encouraged by women in her congregation to continue attending LWML events. Attending conventions has helped her see where mites are going.

Donna Frank is attending her first LWML convention as a delegate from the LWML Ohio District Napoleon Zone. She was impressed with the worship service and Rev. Dr. David Maier's message of running our daily race.

Amid chatter between bites, people agreed that the tradition of friends meeting at convention is important. Faith is energized, and we are encouraged to invite others to attend future events. The more groups meet, the more familiar the faces, and the stronger the desire to build relationships among Christian friends.

GIFT FROM THE HEART TOTALS

(includes all online donations)

Assurance For Life Ministry	\$1,252
CSL Food Bank	\$1,820
CTSFW Food & Clothing Co-op	\$1,445
MOST Ministries	\$915
Unspecified	\$1,405

RUNNING WITH RESILIENCE



During part two of her Bible study on Saturday morning, Deaconess Heidi Goehmann focused on "Running with

Resilience." She opened by asking, "How's your race going?" To answer the question, she suggested positive comments, such as "excellent," "pretty good," "fabulous," or "outstanding." Negative responses might be "dull" or "hurts."

Heidi gave an example of resilience. While a college student, she wanted to impress a young man, Dave, who later became her husband. Dave was athletic. She was not. She entered and ran her first 5K race. Nearing the finish line, she saw Dave, waiting for her. As her foot crossed the line, she "threw up!" Despite this, Dave

exclaimed, "You did it!" She had demonstrated resilience.

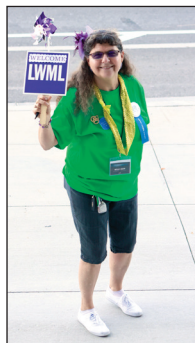
Heidi gave this equation: "Endurance + Hope = Resilience." She shared: God helps us wear our backpacks, but Jesus removes the weight, better known as our sin, one strap at a time. Jesus endured this weight on the cross. God honors our suffering and struggles, no matter how large or small. He builds our resilience because He is concerned for us and brings an awareness of hope. He does not leave us to run alone. She asked us to consider, "What do I need for my race in the year ahead?" The response was to ask God to build resilience in our lives. "God doesn't leave us on our own, but runs before us, beside us, and behind us, cheering us on, and lifting us up when we are weary. He gives us one another, which is no small gift."

MULTI-GENERATION CONNECTIONS

For many members, LWML is a multi-generational organization. Daughters can trace their involvement back to their mothers who demonstrated their commitment to mission service through their mite offerings and their actions. In some cases, mothers recognize their new-found commitment through their daughters' involvement.

Here at the 2021 LWML Convention, many family connections were uncovered, including mothers and daughters, grandmothers and granddaughters, aunts and nieces, cousins and sisters. Whatever the family connection, they are sharing the convention experience together. These multi-generational families are passing the torch, sharing the Gospel, gaining wisdom, and feeling inspired by God. Proverbs 31:25-26 says, *Strength and dignity are her clothing, and she laughs at the time to come. She opens her mouth with wisdom, and the teaching of kindness is on her tongue.* These women are carrying on the tradition to *Serve the Lord with gladness!* (Psalm 100:2).







HUMOROUS INTERRUPTERS SHARE IMPORTANT MESSAGE



Two women enter the convention hall. They talk to each other but seem to be speaking different languages. Gertie (Jan Struck) says to Marcy (Abby Goehring) “What is twittered? Snapped chats? Having time in each other’s faces?” The two generations did not understand each other. “Sometimes,” Gertie said, “it seems like living in the King James version of the Bible.”

Laughter ensues when Jan Struck and Abby Goehring perform, but their message is clear: LWML women need to be willing to change to meet the times, to learn from and grow with each other. Gradually, everyone learns to communicate despite distance between them. Though forms of

communication change, LWML women remain strong and steady. They agree that their love for God, and the desire to serve others, remains the focus.

Gertie and Marcy discussed the future of the LWML. More experienced LWML women need to ask if they are growing toward the young women or shrinking away from them because of resistance to change. Marcy encouraged audience members to remember that “change” is not a bad word. New ways to communicate and to serve need to be found so that young women want to be involved.

Gertie, insisted that 10 a.m. on Thursday was the best time for Bible Study. After all, it always worked for her group! Marcy asked her to consider the woman who works outside the home. Attending weekday morning activities are not possible for her. When Marcy mentioned Zoom Bible studies, Gertie laughingly

commented, “How do we have a Bible study without treats?” Realizing a stalemate, the women decided to work together to connect the generations.

Later at their luncheon, Jan and Abby were asked what they wanted the convention body to take away from their performance. Jan responded, “Don’t tell the young women, ‘When you are older, we will let you run for office.’ Every woman in the church is doing mission work in their own way, and they are all members of LWML.

Abby added, “You all have a talent that God has given to you. Find your talent. They (young women) all have ideas, too.”

COME TO MILWAUKEE!

“The 2023 host districts look forward to welcoming you to the LWML Convention in Milwaukee, a beautiful city along the coast of Lake Michigan. We have great tours and a wonderful Riverwalk. Milwaukee is a city with so much German Heritage — a great place to hold a convention!”

FLICAM: CAMERA JOCKEYS



MOTHER/DAUGHTER

Mother, Esther Killham, and daughter, Cheryl Killham, from LWML Iowa East District enjoy the Winner’s Circle Celebration wearing their homemade fascinators.



40-YEAR PHOTO UPDATED

What an opportunity to update a photo! On the top is LWML Past President Virginia Von Seggern, when she served as Convention Manager for the 1981 Milwaukee Convention. She is shown with her personal page for that convention, Kristen Kolell. On the bottom is Virginia and Kristen, taken at this 2021 LWML Convention. Kristen is serving as a delegate from LWML South Wisconsin District. A fun reunion!



SELF-APPOINTED “CED” COMMITTEE MEETS

Lexington Creative Enhancements Department members try a smile pose of “duck lips” after a long day! Pictured are Coordinator Emily Rogers, Decorations Chairman Nicole Dowdell, and Favors Director Jen Marler.



CHARTER RECEIVED

Bethlehem Lutheran Church, Petersburg, Ill., recently started

their second LWML group specifically for women who work outside the home. While at convention on Thursday afternoon, they received their official charter. This new LWML Central Illinois group is called WinGS. Pictured are Secretary Susan Stier and President Leigh Harrison holding their charter.

the Finish Post

39TH BIENNIAL LWML CONVENTION • LEXINGTON, KENTUCKY

2019–2021 BIENNIAL

Vice President of Communication — Char Kroemer • Newspaper Editor — Karen Karner • Graphic Designers — Cheryl Rackov, Nichelle Dykema • Reporters — Karen Shanahan, Lillian Keller, Esther Nowicki, Donna Payerle, Debbie Wesche, Margaret Kelm • Proofers — Sheila Lutz, Shari Miller, Carolyn Blum, Rev. Brian Noack



Post-Convention Devotion

By Lauren Deneen

Have you ever been surrounded? Maybe you were at a concert or in the midst of Black Friday shopping, frantic shoppers all around, each looking for the best deal. Maybe it was the last family gathering you were able to attend — perhaps a wedding reception; maybe it was this past week at convention! Write down a few times you have felt surrounded.

When I think of being surrounded, I remember going to Lowe's with my dad as a kid. Since he walked so fast (even according to most adults!), if I looked away for one second, he'd be gone — out of sight! I remember feeling overwhelmed and so scared, surrounded by aisle upon aisle of shelves that tripled my height. My eyes frantically raced, searching for my father. "Once I find my father," I thought, "he will take us home!" It was never long before he found me again, but in my child's mind, it seemed like forever!

Being "surrounded by a cloud of witnesses" — how amazing does that sound? In that sense, it's more like being surrounded by family, or your father's loving arms. I have great news!

Right now, you are surrounded by a cloud of witnesses — whether you are participating virtually, reading this devotion with your LWML sisters on the bus ride home from convention, or on your own. We are all running the race together. What are we racing toward? I think the standard Sunday school answer applies best here: "Jesus!"

Take some time to write down "clouds" of witnesses you'd like to pray for as you continue your individual races at home, and with your local church, family, and community.

Let's join as one cloud of witnesses in prayer:

Dear Father, thank You for bringing all of us together today and every day through Your Holy Spirit. Give us the endurance we need to finish the race You set before us, and help us to encourage one another to do so, too. When we fall or grow tired, remind us always to look to You, the One Who with joy went to the cross for us and now sits at the right hand of the throne of God. Amen!

Lauren Deneen, wife of Christopher, a fourth-year student at Concordia Seminary, St. Louis, currently attends church at Hope Lutheran Church in High Ridge, Missouri, where Christopher does his field work and at Bethlehem Lutheran Church in New Haven, Missouri, where he does occasional pulpit supply. They have been called to Our Savior Lutheran Church in Lansing, Michigan.





NEWS RELEASE

FOR IMMEDIATE RELEASE

June 26, 2021

Lutheran Women's Missionary League Convention in Lexington, Kentucky LWML 39TH BIENNIAL CONVENTION HIGHLIGHTS

The Lutheran Women's Missionary League (LWML) welcomed 2,787 people to the LWML Convention in Lexington, Kentucky, June 24–27, 2021, under the theme “Running the Race ... Looking to Jesus.” The convention theme was based on Hebrews 12:1–2. The voting body for the 39th Biennial Convention of the LWML adopted a \$2,150,000 mission goal for the 2021–2023 biennium. This goal, by the grace of God, will fund 28 mission grants as women and men respond in prayer and offerings during the next two years. LWML chose to support the following mission grants, pledging their support with prayers and mites (offerings) given over the next biennium:

1. Deaconess Ministry Dakota Boys and Girls Ranch — Dakota Boys and Girls Ranch, \$81,680
2. Healing the Invisible Wounds of War through Horses — Spirit Warrior, Central Maine, \$95,000
3. Thirst to Learn: Bible Books for Africa's Children — Lutheran Heritage Foundation, \$100,000
4. Making the Next Generation of Disciples for Life — LCMS Life Ministry, \$92,000
5. Helping Hands for Lutheran Deaf Outreach — Lutheran Deaf Outreach, \$50,000
6. Hope of Christ for Cancer Patients — Phil's Friends, \$70,000
7. Training Pastors to Serve the Church in Russia — Lutheran Theological Seminary, Novosibirsk, Siberia, \$100,000
8. Light of Christ in Eastern Europe — Mission Central, \$56,000
9. Propelling the Gospel — LAMP Ministry, Inc., \$65,000
10. Educating Pastors in Africa — Mission Central, \$100,000
11. Redeeming Life Maternity Home, Illinois Expansion — Redeeming Life Outreach Ministries, \$100,000
12. Mercy Medical Care for Tanzania — Mwadui Lutheran School and Community, \$68,182
13. Gospel Outreach to Women and Children in Mongolia — Lutheran Hour Ministries, \$100,000
14. Caring for and Sharing Christ with Hurting People — Concordia Seminary, St. Louis, \$100,000
15. The Littlest and Least of These, Dallas, Texas — St. Paul Lutheran Church and Christian Academy, \$42,000
16. Bring the Inner-City Children to Camp — Lutheran Valley Retreat, Colorado, \$25,000
17. Spiritual and Physical Food for Children of Peru — La Mision Luterana del Peru, \$56,750
18. “Ends of Earth” Scholarships — Mission Opportunities Short Term (MOST) Ministries, \$50,000
19. Sharing Jesus' Love in India — Lutheran Braille Workers, \$100,000
20. Mission & Outreach to the Least of These — Victory Lutheran Church, K. I. Sawyer Community, \$51,356
21. Mercy House Belize Lutheran Campus — Belize Mission Society, \$100,000
22. Ministry Vehicle Fund, Ethiopia, and Sierra Leone — Lutheran Bible Translators, \$70,000
23. Showing God's Love in the International District, Albuquerque, New Mexico — God Cares About You Mission, \$98,000
24. Reaching the Homebound with God's Word — Lutheran Ministries Media, Inc. (DBA Worship Anew), \$100,000
25. Missionaries to America Project — Mission Nation Publishing, \$88,000
26. Strengthening the Lutheran Mission to Kuna, Idaho — Friendship Celebration Lutheran Church, \$100,000
27. Expanding God's Love in Uganda — LCMS Office of International Mission, Africa Region, \$92,000
28. Christ-Centered Materials for Hmong Language School and Outreach — St. Paul Hmong Outreach Ministries, \$70,364

Voting Body Elects New Leaders

Vice President of Christian Life: Susan Brunkow

Recording Secretary: Brenda Piester

Vice President of Communication: Kathy Pavelock

Pastoral Counselor: Rev. Gary Piepkorn

Vice President of Gospel Outreach: Karen Morrison

Nominating Committee: Kaye Wolff, Chairman; Lois Teinert, Janis McDaniels, Lisa Asmus, Melissa Salomón

The Lutheran Women's Missionary League (LWML) is an official women's auxiliary of The Lutheran Church—Missouri Synod. As Lutheran Women in Mission, we joyfully proclaim Christ, support missions, and equip women to honor God by serving others.

LWML news releases are available at lwml.org

Contact:

Susan Donnelly
Public Relations Director
susan.donnelly@lwml.org

LWML Office

801 Seminary Place Suite L010
St. Louis, Missouri 63105
800-252-5965