




the Finish Post

LWML 39TH BIENNIAL CONVENTION • LEXINGTON, KENTUCKY

THURSDAY, JUNE 24, 2021

WELCOME TO LEXINGTON!

 Welcome to Lexington — the Horse Capital of the World! Lexington is the heart of the Bluegrass Region of Kentucky, the home of legendary horses and world-famous bourbons. Lexington is organized like a wheel with spokes. Main arterial roads run from downtown to horse country where visitors find gently rolling hills, miles of plank fencing, and over 450 working horse farms in the region.

Our 2021 host districts — Indiana, Michigan, and Ohio — are excited to welcome you to Lexington to join us in “Running the Race ... Looking to Jesus.” We extend a special welcome to our first-timers, Young Woman Representatives, Heart to Heart Sisters, and delegates. Our prayer is that you will return home with many experiences and memories to share with your LWML sisters. Welcome, also,

to our pastoral counselors who daily guide us and uphold us in prayer. We pray this week will be a blessing to you.

From the Opening Worship and Communion Service to the closing Sending Service, you will be fed and nurtured with the Word of God. When you experience the Gifts from the Heart ingathering, Photo Finish Mission Walk, and Servant Connections activities, you will celebrate God’s faithfulness through your service.

The Host Committee is here to serve and help you wherever needed. If you have questions or concerns, please find your hosts identified by their Irish green T-shirts and fascinators.

In the home stretch and nearing the finish post, we’re “Running the Race ... Looking to Jesus.” Welcome! We’re glad you’re here!

Ruth Thomas, Chairman
2021 Host Committee



FROM THE PRESIDENT

Welcome to the Lutheran Women’s Missionary League (LWML) 2021 Convention! We gather as an organization in response to what Jesus has done and continues to do for us. Because of our Savior’s dying love and His blood-bought gift of redemption, we love — and serve — and give, as He loves — and serves — and gives to us.

During our time together, we will look to Jesus through God’s Word and Sacrament. We will rejoice in our salvation with song and prayer, and we will serve others through witness and deeds of kindness.

We will celebrate the miracles of faith, hope, and love together, always “Running the Race ... Looking to Jesus.”

So again, I welcome you! I’m so very happy you are here! May our Lord bless you and each person touched by His love through LWML.

Debbie Larson
LWML President

RUNNING THE RACE ... LOOKING TO JESUS

 Our convention logo was designed by LWML Graphics Team Member Cheryl Rackov of Dickinson, North Dakota. She incorporated the shape of the last letter of the Greek alphabet, Omega, and refers to this Scripture passage: *I am the Alpha and Omega, the first and the last, the beginning and the end* (Revelation 22:13).

The symbol is shaped like a horseshoe, appropriate as horses are a large part of the Kentucky culture. Ancient Greeks awarded horseshoe-shaped laurel wreaths to victors of competitions. In our logo, the laurel



“Running the Race ... Looking to Jesus.”

Our convention goal statement is “Looking to Jesus, we run the race set before us and proclaim the joy of the Lord.” Convention attendees will focus on Jesus through God’s Word and Sacrament, joyfully celebrate our salvation with song and prayer, and serve our neighbors through witness and mission.

wreath symbolizes our victory in Christ. The banner was a method of announcing an official proclamation. Our banner proclaims that we are



You’ve arrived in Lexington. Now stay informed of convention happenings with Whova. Search for Whova on Apple Store or Google Play and install the app on your phone. Sign in using the email address you used for convention registration. Create a password and type in your name.



Watch the 2021 convention via livestream. Scan the QR code for video streaming during convention. Share with friends at home. For more convention coverage online, go to livestream.com/thelwml

WHERE DO WE DINE?



REMEMBER: You must have your convention badge to receive meals at any location.

Thursday Boxed Supper will be available beginning at 3:45 p.m. until 6 p.m. at **Rupp Arena Concourse, Level 3.**

Friday Boxed Lunch will be available beginning at 11:30 a.m. until 1 p.m. at **Rupp Arena Concourse, Level 3.**

Friday and Saturday Plated Dinners will be served 5–7 p.m. in **Exhibit Hall C, Rupp Arena Concourse, Level 3** Seats cannot be saved. Please enter with your

entire group or allow our hostesses to seat you in groups of 10. Enjoy this opportunity to meet new friends.

Friday Invitation-Only Dinners: See the Activity Locator for place and time.

Sunday Boxed Lunch will be available beginning at 11 a.m. until 1 p.m. at **Rupp Arena Concourse, Level 3.**

Didn't pre-register meals? Lexington has you covered.

Food Concessions: Concession stands are located throughout Rupp Arena with

typical concession-type food and will be open Wednesday afternoon through Sunday. See Activity Locator for times. Limited seating is available close to the concessions.

Restaurants: A list of Lexington restaurants is available at the LWML Information Desk. Your hotel hostesses also have copies to share. Lists include restaurants within walking distance of the Rupp Arena and Central Bank Center. Nearby restaurants may be crowded. Consider your time frame when making meal plans.



The race is on to serve the Lord as we spend a few hours with our LWML sisters working on servant activities. Be prepared for a memorable experience participating in hands-on projects designed to help those in need in the Lexington area as well as across our nation and the world.

Attendees may choose from eight activities: assembling Blessing Bags for college students, making no-sew fleece pillows and lap

SERVANT CONNECTIONS

robes for GraceWorks Lutheran Services, packaging nutrient-rich meals for Love the Hungry, collating and binding Braille and Specialized Large Print material for Lutheran Braille Workers, crafting Witness Bracelets for MOST Ministries, assembling school backpacks for Orphan Grain Train, coloring and writing cards of hope to cancer patients for Phil's Friends, and writing messages inside encouragement cards for Refuge for Women.

Plan to take part during your pre-assigned time slot on **Thursday, June 24, from 9–11 a.m., 11 a.m.–1 p.m., or 1–3 p.m.** After general registration, take your letter to the Servant Connections registration area. You will receive your servant activities pin and ribbon designating your participation time slot. Servant Connections is located in **Exhibit Hall C, Rupp Arena Concourse, Level 3.**

DISTRICT CAUCUS SCHEDULE — THURSDAY, JUNE 24, 2021

3:45–6:20 P.M. DISTRICT CAUCUS TIMES AND ROOM ASSIGNMENTS

3:45–4:30 P.M.

DISTRICT CAUCUS LOCATION

ROOM #	DISTRICT
No Caucus	Atlantic
Meeting Room 2	Eastern
Hyatt Regency 1	Indiana
Hyatt Regency 2	Iowa West
Ballroom 1	Mid-South
Ballroom 2	Minnesota South
Meeting Room 3	Nebraska North
Meeting Room 4	New Jersey
Meeting Room 5	Northern Illinois
Meeting Room 6	Pacific Southwest
Hyatt Regency 3	South Dakota
Meeting Room 7	SEL
Ballroom 3	Texas
Meeting Room 8	Wyoming

4:40–5:25 P.M.

DISTRICT CAUCUS LOCATION

ROOM #	DISTRICT
Meeting Room 2	California-Nevada-Hawaii
Ballroom 1	Central Illinois
Meeting Room 3	English
Meeting Room 4	Gulf States
Ballroom 2	Kansas
Hyatt Regency 1	Florida-Georgia
Ballroom 3	Missouri
Hyatt Regency 2	Nebraska South
Meeting Room 5	North Dakota
Meeting Room 6	Oklahoma
Meeting Room 7	Ohio
Meeting Room 8	Montana
Hyatt Regency 3	Southern Illinois

5:35–6:20 P.M.

DISTRICT CAUCUS LOCATION

ROOM #	DISTRICT
Meeting Room 2	Carolinas
Meeting Room 3	Chesapeake
Hyatt Regency 1	Michigan
Hyatt Regency 2	Iowa East
Meeting Room 4	Louisiana-Mississippi
Ballroom 1	Minnesota North
Ballroom 2	North Wisconsin
Meeting Room 5	New England
Meeting Room 6	Oregon
Hyatt Regency 3	Rocky Mountain
Ballroom 3	South Wisconsin
Meeting Room 7	Utah-Idaho
Meeting Room 8	Washington-Alaska

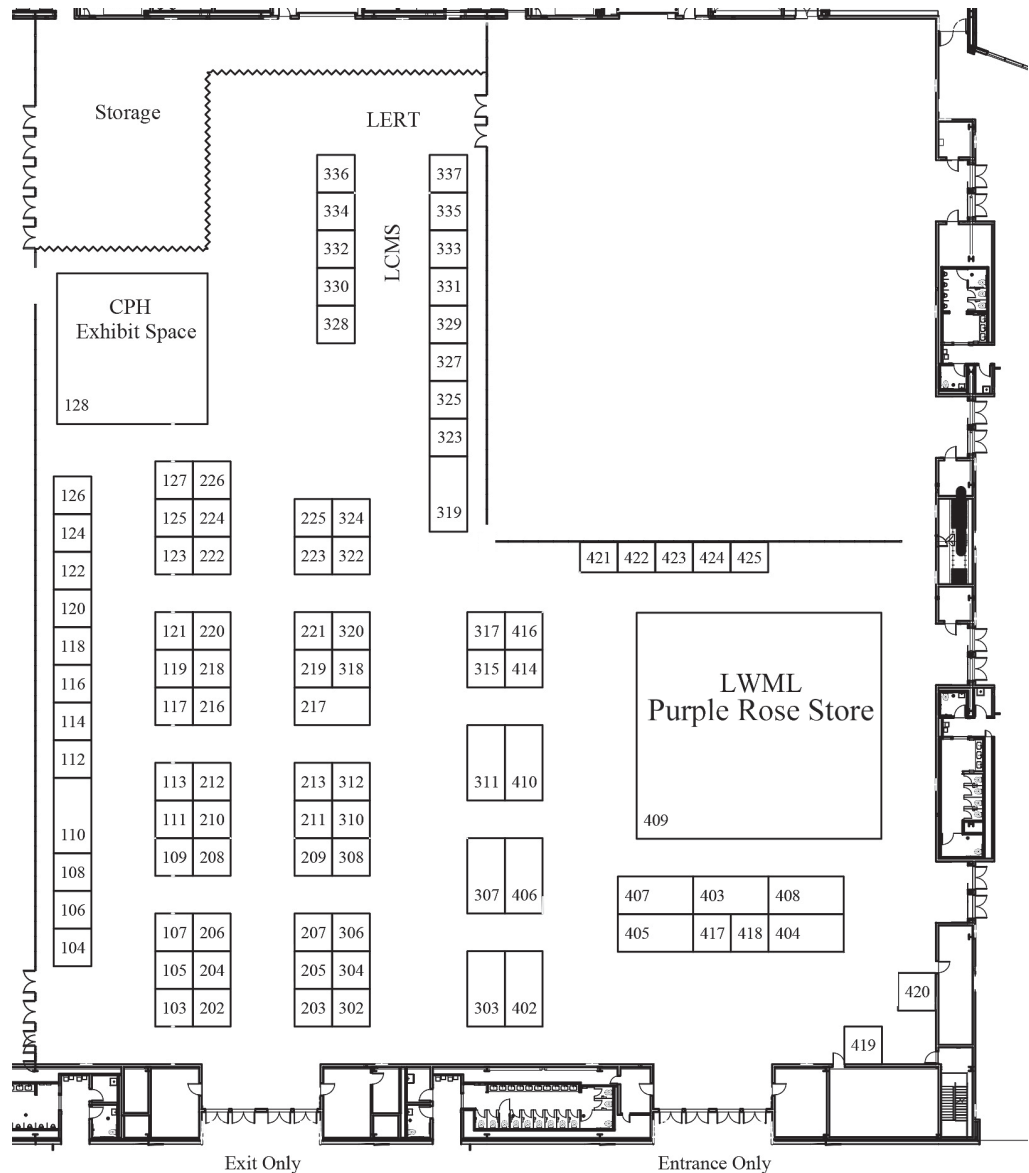
THURSDAY BOXED SUPPER: Those who have pre-registered for meals may pick up their Thursday Box Suppers at **Rupp Arena Concourse, Level 3** prior to the time of their caucuses. You must be wearing your name badge to receive your meal.

CENTRAL BANK CENTER EXHIBIT HALL

Welcome to *Bluegrass Meadows* located in **Exhibit Halls B and A-2**. Take time to stroll through booths and talk with representatives to assist you with ideas for mission and ministry. *Bluegrass Meadows* will be open **Thursday, 9 a.m.–6 p.m., Friday 11:30 a.m.–1:45 p.m., 5–7 p.m., and Saturday, 12–2 p.m.** Plan to be in *Bluegrass Meadows* **Friday, 7–9 p.m.** for the Winner's Circle Celebration.

LWML COMMITTEES BOOTH ASSIGNMENTS BOOTH

LWML Archivist-Historian	418
LWML Christian Life Committee and LWML Christian Resources Editors Committee	405
LWML Church Workers in Mission Committee	304
LWML Committee on Young Women	408
LWML Deaf Ministry Liaison	306
LWML Gifts of Love Ministry	407
LWML Gospel Outreach Committee	308
LWML Growth and Development Committee	312
LWML Heart to Heart Sisters Committee	307
LWML Host Committee Photo Op	404
LWML Information Technology Committee	302
LWML Leadership Development Committee	310
LWML Mission Grants Committee	311
LWML Official Publication Staff	303
LWML Past Presidents	403
LWML Structure Committee	315
LWML Purple Rose Store	409



EXHIBITOR BOOTH ASSIGNMENTS

4 Kenyas Kids	420
Bethesda Lutheran Communities Auxiliary	216
By the Way	421
Camp Restore Detroit	320
Child Beyond International	225
Christian Friends of New Americans	218
Classic Organs of Indiana, Inc.	425
Concordia Deaconess Conference	325
Concordia Historical Institute	122
Concordia Publishing House	128
Concordia Seminary, St. Louis	124
Concordia Theological Seminary, Ft. Wayne, Food and Clothing Co-op	402
Concordia University Chicago	116
Concordia University St. Paul	118
Concordia University Texas	120
Concordia University, Nebraska	406
Dakota Boys and Girls Ranch	108
Ephphatha Lutheran Mission Society	121
Franklin Ave Mission	204
Friends of Westfield House	206
Gifts for All God's Children	416
Hmong International Mission	210
ISM, Inc.	117

EXHIBITOR BOOTH ASSIGNMENTS

KFUO Radio	126
LAMP Ministry Inc.	323
LCMS Prison Ministry	322
Leadchild	224
Legacy Deo	123
LINC Ministries	111
Lutheran Bible Translators	105
Lutheran Braille Workers	319
Lutheran Center for Religious Liberty	327
Lutheran Church Charities	104
Lutheran Church Extension Fund	217
Lutheran Deaf Mission Society	222
Lutheran Family Services	419
Lutheran Federal Credit Union	106
Lutheran Haven Retirement Center	219
Lutheran Heritage Foundation	203
Lutheran Hour Ministries	410
Lutheran Hour Ministries Float Committee	317
Lutheran Immigration and Refugee Service	209
Lutheran Indian Ministries	207
Lutheran Special Education Ministries	208
Lutheran World Relief	424
Lutherans for Life	226
Medical Mission Teams	113
Ministry Focus	202

EXHIBITOR BOOTH ASSIGNMENTS

Ministry in Mission	423
Mission Nation Publishing	324
Mission of Christ Network	125
MOST Ministries	212
Orphan Grain Train	318
Phil's Friends	112
POBLO	109
Project 24/CCC-K	221
Redeeming Life Outreach Ministries	223
Selah Textiles	414
St. Paul Lutheran Hmong Outreach	205
The Apple of His Eye Mission Society	127
The Lutheran Church—Missouri Synod 328,330,332,334,336, 329,331,333,335,337	103
The Shepherd's Hand	422
Thrivent	417
Visit Milwaukee	213
Voice of Care	107
Voice of Faith Lutheran Confessional Church Pakistan	220
Water and the Word	114
Women's Leadership Institute	211
World Lutheran Deaf Outreach	110
Worship Anew/Lutheran Ministries Media	119
Ysleta Lutheran Mission Human Care	119

FRIDAY LUNCH INFO GATHERINGS

11:30–1:30 P.M.

You are invited to bring your pre-ordered box lunch or concession meal to one of the following sessions. Attendees have pre-registered, but additional space may be available. Some sessions will be of interest to specific groups while others are planned for everyone. Arrive early. Once the room fills, the session is closed. Consult the Activity Locator for locations.

- **First-Timers**
- **Gifts of Love Ministry**
- **Heart to Heart Sisters & District Leaders Reunion**
- **Lunch with My Friends**
- **Lutheran Woman's Quarterly Staff**
- **Lutheran Church Extension Fund (LCEF)**
- **Lutheran Hour Ministries**
- **MOST Ministries**
- **Partners in Mission: Pastors, Church Workers, and LWML Impacting Lives**
- **YWRs, YWR Alumni, & Young Women**

REGISTRATION INFO

Registration is located in the
**Pre-Function Area, Level Three,
Central Bank Center.**

HOURS:

Wednesday, June 23 5–8 p.m.
Thursday, June 24 7 a.m.–7 p.m.
Friday, June 25 7 a.m.–2 p.m.
Saturday, June 26 8 a.m.–2 p.m.

GIFTS FROM THE HEART

Gifts from the Heart items will be collected at and packed in **Club B, Level 2, Central Bank Center.** Our gifts will bless Assurance for Life Ministry, seminary food banks, and MOST Ministries. Monetary donations were received online and at the LWML Office. Thanks to all those who participated!

EMERGENCY PHONE (859) 233-4567

Please share this number with your family and friends at home so that they may reach you in the event of an emergency.

WAKE UP WITH THE WORD



Four Bible study options are available both Friday and Saturday mornings from 6:45–7:45 a.m. No registration is required. Find room locations in the Activity Locator. Grab breakfast from a convention center concession stand and Wake up with the Word!

Friday, June 25, 2021

1. Deb Burma — “Be Still and Know” (sponsored by Concordia Publishing House)
2. Deaconess Rachel Jaseph — “La carrera de la fé: ¿Quién está corriendo?” / “The Race of Faith: Who’s running?” (Spanish Bible study)
3. Shari Miller — “Running the Race”
4. Donna Snow — “Unshakeable: Standing on the Rock When Life Quakes Hard”

Saturday, June 26, 2021

1. Deaconess Heidi Gochmann — “Finding Hope”
2. The Rev. John Heckmann — “Born to Run ... Away, Reborn to Run with God”
3. Christina Hergenrader — “Be Inspired! Four Habits for Your Faith” (sponsored by Concordia Publishing House)
4. Kaye Wolff — “Be Thou My Guide”

2021 LEXINGTON CONVENTION OFFERINGS

Convention Offering #1 — LWML Mission Goal 2021-2023. The standing rules of the Lutheran Women’s Missionary League Bylaws state that the offering received at the convention communion service shall be designated as a contribution to the mission goal of the LWML.

Convention Offering #2 — King’s Community Outreach in Fort Wayne, Ind., to support a parking lot ministry with in-car worship every Sunday that reaches out with the Gospel to those in the inner city, first bringing them to Christ, then into the church, and helping them Run the Race and Look to Jesus.

Convention Offering #3 — Gifts for All God’s Children’s Connecting Kids to Christ Center in Detroit, Mich., to expand their program of providing Sunday school, one-on-one tutoring, summer camps, and year-round Christ-centered events to at-risk children, and to train other churches that desire to replicate the program in their congregations.

Convention Offering #4 — POBLO International Ministries in Clinton Township, Mich., to train congregations to begin outreach to non-Christian communities in their neighborhoods and others via Zoom or in person, and to support sharing the Gospel with Muslim, Hindu, Sikh, and Buddhist communities in the United States by inviting ethnic populations to become part of LCMS congregations.

KING’S KIDS CLUBHOUSE

Friday and Saturday 8 a.m.–5 p.m.



We welcome our youngest convention attendees to King’s Kids Clubhouse. Princes and princesses will be treated to two days of fun and adventures while being supervised by caring adults.

Infants and toddlers will remain on site entertained with music, games, crafts, stories, and outdoor play. What fun they will have running under a parachute! They may find time for a nap.

The primary and intermediate groups will be busy during the mornings hearing Bible stories, creating artistic wonders, and playing games. In the afternoon, both groups will explore two of Lexington’s top attractions for children. On Friday, they will enjoy horse activities when they visit the Horse Park. On Saturday, they will

explore the world of science at the Lexington Explorium.

The teen group will assist the Lexington community through two service projects. On Friday morning, the group will walk to the Salvation Army to sort food and clothing. On Saturday morning, they will test their artistic talents as they paint a shed at Good Shepherd Lutheran Church. In the afternoons, the teens will enjoy some special entertainment. On Friday, they will tour the Horse Park. On Saturday, they will relish arcade games and bowling at Lex Live.

Easy to spot in their neon green T-shirts, these children will display God’s message of joy and love as they travel throughout the city.



HAPPENING IN THE *BLUEGRASS* MEADOWS EXHIBIT HALL



Run for the purple roses! Shop the **LWML Purple Rose Store** located in *Bluegrass Meadows* Exhibit Hall. Purchase your LWML face mask for here and travel home. Find *Text Messages from God, Volume 2*, and confirmation cards for your congregation's youth. New in jewelry: dangle earrings with a gold-tone logo. The first 960 customers receive a free Erin Bode's recording of "Be Still My Soul."

Christian Life/Christian Resources

Editors: The Race is ON. Roll the dice, test your LWML knowledge, and win a poncho or leave with a Slow-Poke candy. All are winners with the new *Faith Building Help for Groups*. Winner's Circle night, toss a ring for more fun and prizes plus several inspiring downloadable Bible studies and retreats.

Church Workers in Mission: Whoa! Stop that pony at the Church Workers in Mission booth #304. Lots to put in your saddle bags, plus a feather in your cap. Prize drawings for attendees and church workers. Free LWML ponchos for that rainy day ride. See you soon, friend!

Committee on Young Women: Come meet the YWRs at the Committee on Young Women booth. Take some time to get to know them while you make your own fascinator that you can wear to the Winner's Circle Celebration. We have all the supplies for you!

Gifts of Love Ministry: Register for cool prizes and use our vibrant photo op backdrop: Passing the Baton from Generation to Generation. Did you know that you can provide for the people you love and the ministries you care about after you are called home to heaven? See how LWML Gift Planning Counselors can help you!

Growth and Development: Welcome to Lexington! The LWML Growth and Development Committee invites you to stop by their booth during the Winner's Circle Celebration on Friday evening to have your photograph taken with a horse-racing jockey. You will not want to miss this JOYful photo opportunity!

Information Technology: Information Technology Committee (ITC) is having a Derby! Join in on the race to support LWML districts with #LWMLFacesFriday photos. Get information on staying connected with your sisters in Christ. Join ITC during the Winner's Circle Celebration for a "A Day at the Races" with fun and giveaways!

Mission Grants: LWML has been running the race, funding mission grants, since 1942. Come play the Running the Race through Missions game, eat a chocolate sneaker or two, receive a Missions Runner button, see our resources, and learn how the 2019–2021 LWML Mission Grants are impacting grant recipients.

Our Past Presidents will be at their convention booth in the *Bluegrass Meadows* Exhibit Hall on **Thursday throughout the day; on Friday from 11:30 a.m.–2 p.m.; and on Friday night for the Winner's Circle Celebration.** Share memories and take a photo with them. They will sign the book *Dedicated! Lutheran Women Grounded in the Word; Growing in God's Mission*, a detailed history of the LWML. Bring your book or purchase one at the LWML Purple Rose Store. For fun, childhood photos of each president will be shown for you to guess who's who. Come and meet these gracious servant leaders!

BLOOD DRIVE



We look forward to your participation as a blood donor at the LWML American Red Cross Blood Drive on **Thursday, June 24, from 9 a.m. to 3 p.m.** Come directly

to **Exhibit Hall A–1, Level 3, Central Bank Center.** Please arrive 10 minutes prior to your scheduled appointment time. Walk-ins welcome but scheduled as time permits. If you have questions, call or text Margie Wickert, Blood Drive Director, at (219) 863–6213.

PHOTO FINISH MISSION WALK

Pre-registered participants may submit their pledge sheets and donations and collect their T-shirts at the **Photo Finish Mission Walk table** located in the **Atrium, Level 1, Central Bank Center.**

The **Photo Finish Mission Walk** happens **Saturday, June 26, from 4:30–5:30 p.m.** Start the walk at Triangle Park located across from the Hyatt Regency Hotel. The walk follows the route along Main Street down to Thoroughbred Park and back again.

GRACE PLACE PRAYER CHAPEL

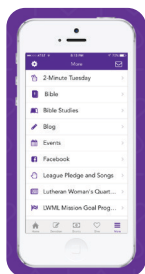
Do you need a few quiet moments, time to reflect, or want to offer prayers to our Lord? Come to Grace Place Prayer Chapel in **Meeting Room 1, Level 2, Central Bank Center** to be refreshed. Grace Place Prayer Chapel will be staffed with an LWML host or hostess to greet you. Also, a pastor will be available for counsel.

Have a prayer request? Prayers of praise, thanksgiving, and specific needs will be offered at Grace Place Prayer Chapel. Find the prayer request form on Kelly green paper in your tote bag. Write your request and leave the form at Grace Place Prayer Chapel or at the Registration Desk.

ENTERTAINMENT INFORMATION

Non-registered guests are invited to enjoy free admittance to our Saturday evening entertainment Billie Reneé & the Cumberland Gap at **7:30 p.m. in Rupp Arena.**

LWML WITH A TAP? THERE'S AN APP FOR THAT!



Download the
LWML App

Available on the
App Store

GET IT ON
Google Play

With the Lutheran Women's Missionary League app, you'll always be just a tap away from Mustard Seed devotions, LWML Mission Grant updates, and more!

Go to Apple Store or Google Play to download the app to your device.

SEATING

Seating on the floor is reserved for all delegates, LWML committees members, program participants, and invited guests during the meetings. Designated areas are available on Level Three for those who are physically or hearing challenged. Please follow the ushers' instructions. Thursday night worship and Saturday night entertainment will be open seating (including the floor) with limited reserved seating.

CONVENTION COURTESY RULES

It is requested that no photos be taken during worship services and other devotional periods. Please turn your cellphones off or set them on vibrate. The LWML will be taking photos and videos throughout convention. Your registration gives the LWML permission to use your image and comments in educational, informational, and promotional materials in a variety of media, including webcast and other electronic media.

WORSHIP SERVICES

Thursday's **Opening Worship Service at 7 p.m.** and Sunday's **Sending Service at 11:15 a.m.** are open to the public.



COMMUNION WARE POTTERY



LWML communion ware pottery was created by Walt Schmidt at his Hickory Tree Studio, nestled in the beautiful hills of Bloomington, Indiana. Mr. Schmidt used earth tone colors of ivory, bronze green and a band of cobalt blue when producing the communion ware pieces. In addition to the chalice, the flagon (pitcher to hold extra wine), and the paten (plate to hold the communion wafers), LWML commissioned him to make a matching 12-inch tray. The 12-inch tray will be used to carry prefilled communion chalices, the same used by congregations during this past year of COVID-19.

Due to continued concerns for health and safety, the chalice, or common cup,



will not be used at Holy Communion this year. While we experience differences, we will be worshipping, singing praises and celebrating His Meal together.

Our deepest thanks to Lutheran Hour Ministries for funding the communion ware, the 3,000 prefilled communion cups and wafers.

WHAT'S IN THE BAG?



What's in that small plastic bag in your convention tote? Is yours green, blue, or purple polka dotted? It's a bookmark, and 3500 were constructed by seven LWML groups, three from Indiana, three from Ohio and one from Michigan, as this convention's favor. One member made 160 alone.

What does it take to develop a unique convention favor that speaks to a particular theme? "Lots of trial and error," said Favors Director Jennifer Marler, sharing the process that unfolded over the past year. Given the pandemic and its uncertainties, "People will remember this convention," she said. Committee members wanted something functional, a daily reminder of both the convention and the race we ran this past year. The result was the bookmark. Each began as a 22-inch ribbon, ends connected by sewing a

hair tie between them. The convention's logo and theme were imprinted on a cherry wood button, then the button was handsewn to the bookmark. Once the idea was developed, assembly lines were formed. Some members cut ribbons. Some sewed closures. Others sewed the buttons. Still others bagged bookmarks. Every step in the process was one of love and commitment.

How does the bookmark work? Unfold and hold it to the side of your manual open to the page to be saved. Stretch it over the pages, including the back cover. Close your book now knowing that when you open it, you'll be right where you left off. Once home, use it with other books. Extras are available for a donation so that anyone wanting more may take them home to those who couldn't be in Lexington.

📶 Convention Wi-Fi Network: **Looking to Jesus**

the Finish Post

39TH BIENNIAL LWML CONVENTION • LEXINGTON, KENTUCKY

2019-2021 BIENNIAL

Vice President of Communication — Char Kroemer • Newspaper Editor — Karen Karner • Graphic Designers — Cheryl Rackov, Nichelle Dykema • Reporters — Karen Shanahan, Lillian Keller, Esther Nowicki, Donna Payerle, Debbie Wesche • Proofers — Sheila Lutz, Shari Miller, Carolyn Blum, Rev. Brian Noack

