



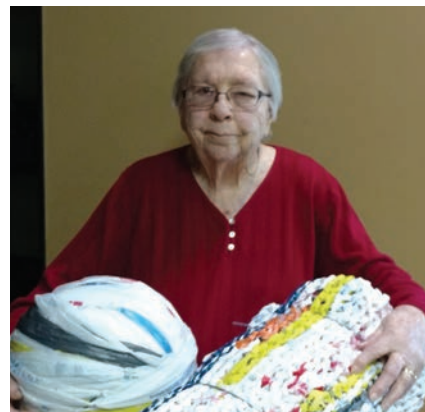
Cupcakes, Coffee, Canvases, and Crosses was the theme for **St. Luke's LWML of Manhattan, Kansas** (Kansas District), 70th anniversary celebration. Twenty-five women gathered for a painting party led by LWML Growth and Development Chairman Crystal Miller. Following the lead of a master painter, each participant created a unique piece of artwork featuring a cross. These paintings will be placed in a special location, reminding us that we are God's creation and are here to serve our Lord.



The LWML women of **St. Paul of Lester Prairie** (Minnesota South District), were recently busy assembling more than 50 hygiene kits for Orphan Grain Train. Each recipient will be blessed to receive a *Portals of Prayer* booklet along with many different types of health care supplies.



Songwriter, singer, worship and retreat leader Wendysue Fluegge led the program "Divine Destinations" at **Calvary Lutheran Church of Watseka, Illinois** (Central Illinois District), women's retreat. During this half-day retreat, 100 women from Lutheran churches and the local community were inspired as they heard the message of Jesus through song and Bible study. Trudy Bell writes, "It was an amazing, inspiring morning for all ladies who attended."



Combine a dedicated 94-year-old woman with more than 70,000 plastic bags, and you get 100 plastic sleeping mats for Orphan Grain Train's mission work! For the past eight years, **Evelyn Knoepfel**, charter member of **LWML Shalom Society of Peace Lutheran Church, Grand Island, Nebraska** (Nebraska South District), has been faithfully using "plarn" (plastic yarn) to create 3' x 6' plastic mats. Pat Strauss, society secretary, says of Evelyn's diligent service, "I made a few of those mats, but arthritis in my fingers won and I had to stop. She says it helps her fingers stay nimble. Bless her!"

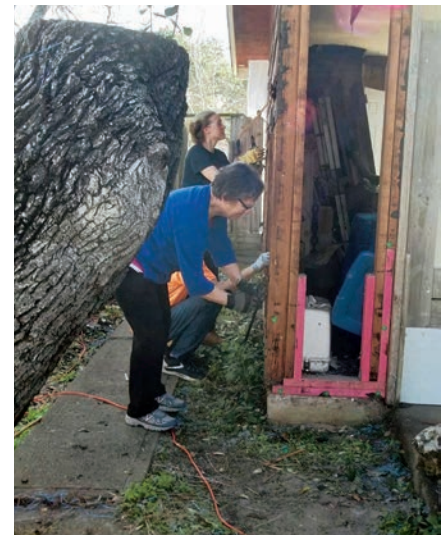


Back in 1964, **Mary Helen Kelly** (Pacific Southwest District) had no idea that 55 years later she would attend the 2019 Past District Presidents' Dinner in Mobile! Over the course of her 94 years, from 1964–1968, when she served as an LWML District President, and 1981–1985, when she served as LWML Treasurer under LWML Past President Helen Gienapp, her life has demonstrated a great testimony of service to the Lord!





The women of **Bethlehem Lutheran Church** have definitely earned the title of "Women in Action!" These faith-filled ladies of **Morristown, Minnesota, Ladies Aid** (Minnesota South District) were busy during the Lenten season hosting their Lenten soup suppers. They were able to raise \$1,150 for a local member who had undergone heart surgery. Great work!



Women of **Kettle River Zone's LWML** (Minnesota North District) recently gathered various supplies to support their local battered women's shelters. With the aid of a Thrivent Action Team grant and through their efforts, these gifts will bring some comfort to women who are in pain.



The dedicated women of **St. Paul Lutheran Church and School of Hilton, New York** (Eastern District), have been faithfully making quilts for Lutheran World Relief (LWR). In 2018, they were able to add 61 quilts to the many other quilts and kits on the truck from other surrounding area churches.

Since the ladies from St. Paul wanted to participate in a hands-on service project, and since they have worked diligently with LWR in the past, they decided to visit the LWR warehouse in New Windsor, Maryland. During their visit, they were able to sort and pack hygiene kits that would be shipped all over the world. It was a great trip and they plan to do it again.

Usually the women of **St. Matthew's Lutheran Church, Esko, Minnesota** (Minnesota North District), gather with other members of their LWML group and sew backpacks and pillowcase dresses. This past January, some of their members did something different. They went on a mission trip!

Sixteen members of this adventurous LWML group went on a 5-day mission trip to Corpus Christi, Texas. They worked in three different locations: tearing off siding, piling debris, and using power tools when necessary. Whatever was needed, these women were there to help!

In March, an LWML member will be going on a medical mission trip to Guatemala. She will have the opportunity to hand-deliver a mountain of dresses and backpacks at the same time.





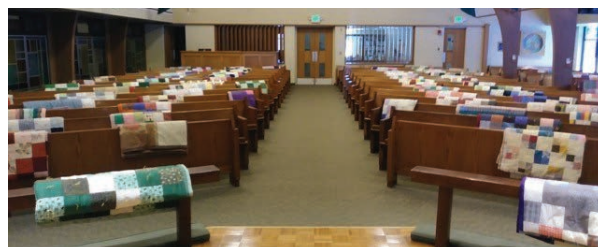
The hands of **Concordia Lutheran Church, Hagerstown, Maryland** (Chesapeake District), women never rest! Over the past seven months, they have sewn 30 quilts, 372 pillowcase dresses, 37 boys' shorts, and 22 multi-purpose market cloths. In just three short years, and using mostly donated supplies, this team of faith-filled workers have been able to complete 181 quilts, 1898 dresses, 324 shorts and 107 market cloths!



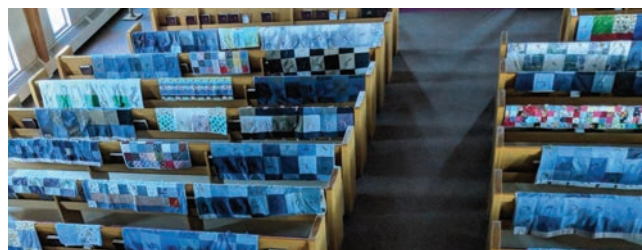
The blending of women from **St. John Lutheran Church, Dieterich**, with women of **St. Paul Lutheran, Wheeler** (Central Illinois District), proved to be a beautiful mixture. A small-but-mighty group worked together piecing colorful fabrics, sewing, and tying 229 quilts! Most quilts were shipped out through Orphan Grain Train and Lutheran World Relief. The remainder of the quilts will be used to support their local community.



The quilters of **Faith Lutheran Church, Silver Bay, Minnesota** (Minnesota North District), have been busy using every penny of a grant they received from "Operation Round-Up." Cooperative Light and Power sponsored this grant and sent a check for \$500 to these very industrious women. These funds were used to make quilts, pillowcases, and pillow sets for foster children and their local Veteran's home.



This past January, the women of **South Shore Trinity Lutheran Church, White Bear Lake, Minnesota** (Minnesota South District), dedicated 89 quilts that were delivered to Lutheran World Relief. Great thanks to all who devoted their time and talents to make these quilts — true blessings to those who will receive them.



**Peace Lutheran Church, Rapid City, South Dakota** (South Dakota District), is the place where 10 to 15 women and men gather each Monday and work together to create beautiful quilts. This year alone, 245 quilts were made and distributed. In addition, they were able to send Orphan Grain Train 42 plastic mats and 106 pillowcase dresses. What a remarkable way to use each individual's gifts and talents!



A warm welcome is hard to resist especially when it comes from the LWML of **St. John Lutheran Church, Woodbury, Minnesota** (Minnesota South District). They invited the women of their church to a spring luncheon. Young women with children were encouraged to attend. Delicious food and wonderful hospitality blessed more than 100 women who attended. Marilla Schmitt and her daughter, Holly Lewis, donated a gorgeous quilt that raised more than \$300 to be used for missions! Many members even brought their favorite teapot for display. Wow! These ladies thought of everything!

## SPRING 2020 THEME: VISION 20/20

Please share stories and photos of joyful, mission-minded service with News Editor Linda Guteres: [newseditor@lwml.org](mailto:newseditor@lwml.org) or 3 Timber Trail, Medford, NY 11763 **Deadline:** November 1, 2019. **Include:** name, address, phone, and email.



## In Remembrance of Elinor Burce, 1923–2019

After leading an incredible life of decades of mission service in the name of Christ, on February 9, 2019, at age 95, our heavenly Father chose to bring Elinor Edith (Dicke) Burce to her heavenly home with Him.

Elinor Dicke was born in Brazil on September 5, 1923, to missionary parents, Rev. Edward and Edith (Klinkenberg) Dicke. The family returned to the States in 1931 to a life of pastoral service in Minnesota.

After high school, Elinor acquired secretarial and accounting qualifications and found employment at Concordia College in St. Paul, where she worked

until her marriage in 1948, to seminary graduate Willard (Bill) Burce.

Elinor and Bill soon began four decades of service as LCMS missionaries to (and with) the people of the mountains and coastlands of New Guinea. With strong faith, courage, and love, Elinor found a full life in her multiple roles as missionary spouse, mother, gracious host, friend, teacher, facilitator, and unflagging witness to the saving grace of God in Christ.

Elinor was a founder, supporter, and long-time treasurer of the Papua New Guinea Handicapped Children's Association and is remembered for her groundbreaking work on behalf of children with disabilities.

Four of their seven children were born in a New Guinea hospital built with

LWML funds, and six of their children attended the missionary school that was built with the help of the LWML.

In retirement, Elinor was very active in LWML in Eau Claire, Wisconsin, and served as zone president for a number of years. Her passion for the mission and ministry of LWML never wavered. As a final gesture to give back to missions, she specified that memorial donations be sent to the LWML.

Elinor is survived by her husband, seven children, 14 grandchildren, and five great grandchildren. Her daughter Carrie Koehn writes, "She led a remarkable life in service to her Lord and Savior. She touched thousands of people with her unfailing compassion, generosity, humility, and most of all her unwavering faith."



The LWML of **Immanuel Lutheran Church, Loveland, Colorado** (Rocky Mountain District), take the name Lutheran Women *IN MISSION* seriously. With help from the congregation and a Thrivent Action Grant, they were able to assemble 74 personal care kits for Lutheran World Relief. The congregation also collected 1,876 diapers for a Nappie Project. There are currently 5.3 million children in America, aged three or younger, living in poor or low-income homes. Diapers cannot be obtained with food stamps, and no state or federal child safety-net program allocates dollars specifically for the purchase of diapers. The Nappie Project supplies diapers to many organizations who distribute clean, dry diapers to families in need. These women sure know how to make a change!



**First Lutheran, Burbank, California** (Pacific Southwest District), has been providing American Sign Language (ASL) interpreted church services since 1997. At first, ASL-interpreted services were only available twice a month but are now offered every Sunday.

With thanks to LWML Mission Grant funds and the ASL interpretation skills of Harry and Ann Hansell, the LWML Pacific Southwest District was able to expand their Deaf Ministry to include ASL interpretation at voter's meetings, potluck dinners, and various events, a practice that continues even today. First Lutheran hosted a free, eight-week ASL class, and they plan a refresher course soon to help build better bridges of communication with Deaf members. How happy to learn LWML is expanding the Deaf Ministry in the LCMS!