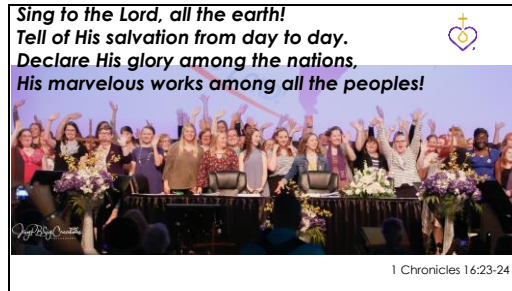


Slide 1

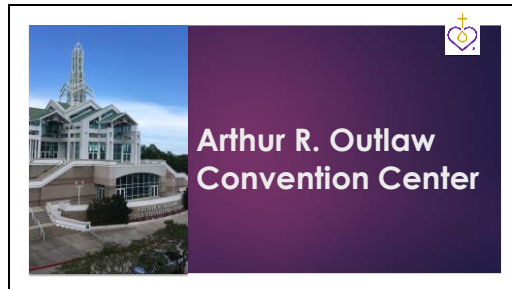


Slide 2



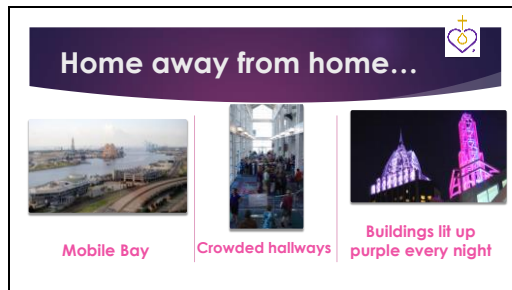
**Suggestion:** Take time to explain this picture to your audience.

Slide 3



**Suggestion:** Share anything about the convention center you experienced.

Slide 4



**Suggestion:** Take time to share your thoughts about:

- The host city, Mobile (click for picture and text)
- The convention hall (click for picture and text)
- How welcoming the city was to the LWML (click for picture and text)

Slide 5



**Gifts from the Heart**

- 8,436 Arch Books
- 228 Baby Kits
- 262 Sheet Sets
- 1,161 Hygiene Kits



**Suggestion:** Share how each convention attendee was invited to bring items as a donation to be distributed to local service agencies. Share your experience helping with the Gifts from the Heart collection.

Slide 6




**Gifts from the Heart**

- 926 Bibles
- 214 Quilts
- 43 Boxes of Miscellaneous Supplies
- \$33,630 in Gift Cards



Slide 7



**Recipients of Gifts from the Heart...**



**Women's Resource**  
Pregnancy Center offering faith-based counseling, support, and alternatives to abortion

**Suggestion:** Explain that these next three slides are the agencies that received our "Gifts from the Heart" items.

Slide 8



**Recipients of Gifts from the Heart...**



**Home of Grace**  
Faith-based recovery program for addicts in the Mobile area

Slide 9

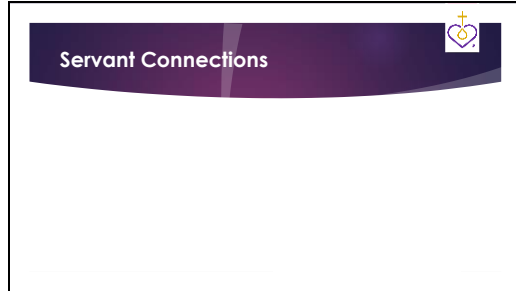


**Recipients of Gifts from the Heart...**



**Penelope House**  
Christian counseling and care for victims of domestic violence

Slide 10



**Suggestion:** Use this page to add any pictures or thoughts you had about the servant activities you participated in.

Slide 11



**Suggestion:** If you have a picture from the Mission in Motion walk with you in it, please replace the picture of Pres. Patti at the walk or add an additional slide with your picture on it.

Slide 12



**Suggestion:** Explain that the Mission Pledge Walk, Tee Up 4 Mites, and Round Up for Mites were ways additional monies were raised for mites.

Slide 13



**Suggestion:** Share that these offerings are collected throughout the large gatherings at the convention. Each offering was designated for a different purpose as listed above.

Slide 14



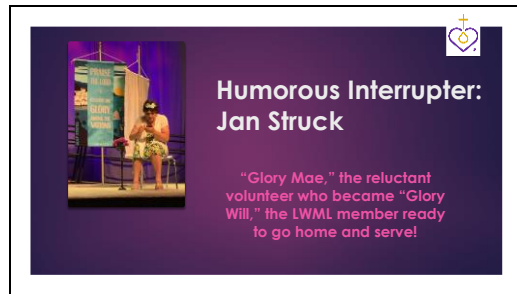
**Suggestion:** Take some time to explain President Harrison's message at the convention and any thoughts you have about or experiences you had with President Patti Ross.

Slide 15



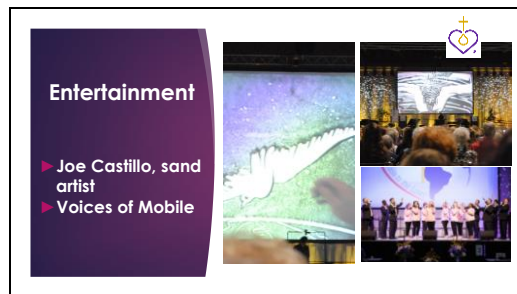
**Suggestion:** Report that our new president, Debbie Larson (center in green plaid jacket) was elected to lead our organization for the next four years. Feel free to point out any of the other officers that you might have met at convention or might know personally.

Slide 16



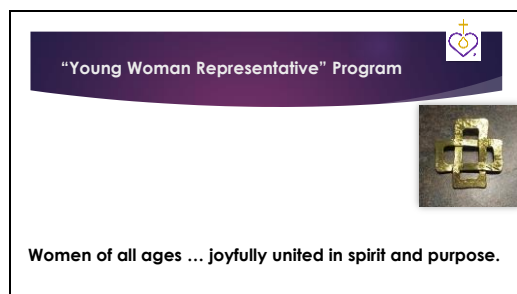
**Suggestion:** Take some time to explain how Jan Struck interrupted the convention proceedings with her antics.

Slide 17



**Suggestion:** Give a brief explanation of the entertainment.

Slide 18



**Suggestion:** Personalize this slide with your thoughts regarding your YWR experience and a few pictures of you with some of the other YWRs. Additional pictures or text boxes can be added when you personalize this slide.

Slide 19



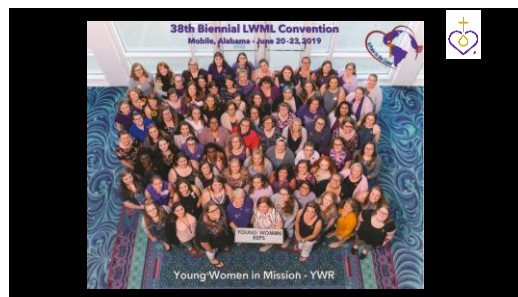
**Suggestion:** Personalize this slide to share your thoughts about what you learned and took away from the convention.

Slide 20



**Suggestion:** Personalize this slide by inserting a picture of you walking in the District Banner Processional with your District President.

Slide 21



**Suggestion:** Summarize your presentation with a final thought or two and a word of thanks to those who provided you with this opportunity to attend the Mobile LWML Convention in 2019.

Slide 22



Committee on Young Women  
Published by Lutheran Women's Missionary League 2020  
*lwml.org*