



Training K-9 Comfort Dogs for LCMS Chaplains

\$30,000



A public high school in Belvidere, IL set aside the library for students to be comforted by K-9 Comfort Dogs.

Lutheran Church Charities is a ministry that connects people with resources when a person, or a church, or a community is suffering and in need. The K-9 Comfort Dog Ministry is a national ministry utilizing the unique skills of dogs to open opportunities to touch people with mercy and compassion. After training is complete, each comfort dog is placed with an LCMS chaplain who uses the comfort dog as part of his crisis ministry. The dogs are able to meet a need that simple conversation cannot. Based on the positive initial contact with the comfort dogs, chaplains can continue to meet the needs of people in crisis through the comfort of the Gospel.

We Pray Together...



Gracious Heavenly Father, You see people in need and have provided the greatest comfort of all through salvation. Please use the K-9 Comfort Dog Ministry to give physical comfort to those who are hurting. Let the gentle loving nature of these animals soothe deep needs in times of crisis. Give the handlers and chaplains patience and wisdom so they are ready with Your words of comfort when the time is right. Help us all to reach out with Your love when there is need in our communities. In Jesus' precious name we pray. Amen



Two children affected by Joplin, MO tornado destruction opened up and talked after spending time with Comfort Dogs



Lutheran Women's Missionary League
P.O. Box 411993 • St. Louis, MO • 63141-1993
www.lwml.org • 1-800-252-5965

Find us on Facebook:
Lutheran Women
in Mission - LWML





Lutheran Children's Books for Southeast Asia

\$72,000



LWML shows God's love to Southeast Asian children and their parents by supporting Lutheran Children's Books for Southeast Asia which will provide for 9,000 copies of Luther's Small Catechism and 6,000 copies of A Child's Garden of Bible Stories to be translated, published, and produced by the Lutheran Heritage Foundation so that Southeast Asians may learn and better share the Gospel and the Lutheran faith with their families.

We Pray Together...



Oh Heavenly Father, Thank You for equipping missionaries and lay leaders with Christian books that are spreading Your Holy Word to the peoples of Southeast Asia, Japan, and China in their native countries and to immigrants in the United States. We praise You for enabling the Lutheran Heritage Foundation in its mission to translate, publish, and produce Luther's Small Catechism and A Child's Garden of Bible Stories for Southeast Asians in their native languages. You are an awesome God! The requests for these books outpace the Foundation's ability to provide them. Bless this grant which will provide for 9,000 copies of Luther's Small Catechism and 6,000 copies of A Child's Garden of Bible Stories to be printed for distribution so that Southeast Asians may know Your love and their Savior, Jesus Christ. In Whose name we pray, Amen.



LHF is translating and publishing books and catechisms to teach children about Jesus.



Lutheran Women's Missionary League
P.O. Box 411993 • St. Louis, MO • 63141-1993
www.lwml.org • 1-800-252-5965

Find us on Facebook:
Lutheran Women
in Mission - LWML





Training Indigenous Pastors and Deaconesses



CTS has a thriving deaconess community, where women study and worship together. Student Jennette Morrison traveled to India with 4 other deaconess students and visited a tsunami relief project for children.

\$100,000

This LWML grant provides scholarship support to two international students each year for two years. These students will train to be pastors and/or deaconesses who will return to their countries to teach the Gospel. Their knowledge of language and culture will make them strong leaders and teachers who understand the needs of those in their home countries.

We Pray Together...



Heavenly Father, Bless the efforts of dedicated men and women who come to Concordia Theological Seminary, Fort Wayne, Indiana, from other countries. Give them strength and insight to learn from Your Word so they can take the precious message of salvation back to their home countries. Then bless those who hear Your Word through them. In the name of our Savior, Jesus, Amen.



Concordia Theological Seminary has extensive experience in teaching men from other countries. Pastor William Boateng from the Evangelical Lutheran Church of Ghana is currently a student here.



Lutheran Women's Missionary League
P.O. Box 411993 • St. Louis, MO • 63141-1993
www.lwml.org • 1-800-252-5965

Find us on Facebook:
Lutheran Women
in Mission - LWML





Rebuilding Nord Est Haiti Lutheran School

\$100,000



Grades 1-4 meet in church/school building for classes. Outside is the kindergarten classroom.

Nord Est Haiti Lutheran Mission began in 2001 when Rev. Daniel Paul returned to Haiti after graduating from Concordia Theological Seminary, Fort Wayne, Indiana. He established a Lutheran primary school which has seen many changes due to increasing numbers of students and the massive earthquake in 2010. Students are now having classes in multiple buildings including a girl's orphanage. Having a safe school building will allow students to continue to be fed physically, mentally, and spiritually in a space set aside for their learning. This grant will construct the foundation, walls, and a roof for a building containing ten classrooms, an office, a cafeteria, a kitchen, a library, and bathrooms.

We Pray Together...



Dear Jesus, You told Your disciples that little children should be brought to You and taught about salvation. The children attending Nord Est Haiti Lutheran Primary School are in need of this teaching. Bless those who are caring for these children, feeding their bodies, minds, and faith. Give them the wisdom to place Your Word in the hands of these children every day. Bless this building project so a safe and secure building results in continuing care for these Your children. Strengthen the faith of all involved with this mission. We pray in Your name. Amen.



The school administrators and teachers during the 2011-2012 school year.



Lutheran Women's Missionary League
P.O. Box 411993 • St. Louis, MO • 63141-1993
www.lwml.org • 1-800-252-5965

Find us on Facebook:
Lutheran Women
in Mission - LWML





Jesus Our Savior Lutheran Schools – Winnebago Tribe, Nebraska

\$58,553



Learning about seeds.

The village of Winnebago, Nebraska, is the home of Jesus Our Savior Lutheran Schools. The first year of classes was 1997 with preschool classes for three and four-year old students. Classes are now offered to students from preschool through third grade. These classes are currently being taught by two teachers. This grant will provide two part-time assistants for two years, as well as curriculum materials, including Concordia Publishing House religion curriculum. It will also provide classroom technology to enhance learning. This outreach to American Indians in northeast Nebraska encourages young people to seek education, respect their culture, and know their Lord.

We Pray Together...



Dear Father in Heaven. Your world contains many cultures. The American Indian culture is a rich opportunity to share Your love and salvation. It is also an opportunity to encourage young people to make wise choices about their lives and their future. Bless the efforts of Jesus Our Savior Lutheran Schools. Give the teachers and helpers patient strength and loving wisdom so their students desire knowledge and understand Your Word. Let Your Word proclaimed in this school strengthen the faith of all in the community. We pray in the name of Jesus Christ, our Lord and Savior. Amen.



Weekly Chapel.



Lutheran Women's Missionary League
P.O. Box 411993 • St. Louis, MO • 63141-1993
www.lwml.org • 1-800-252-5965

Find us on Facebook:
Lutheran Women
in Mission - LWML





I CAN – Serving At-Risk Children with Learning Needs

\$99,000



Special Education Teacher, Judy Hawkins with some of the students during the I CAN Learning Center reading activity at Charity Lutheran Church in Detroit, MI.

We Pray Together...



Good Teacher, You desire that all children have the opportunity to learn and grow academically and spiritually to reach their full potential. Many youth in our communities, especially those with learning needs, do not have the resources to participate in after-school or summer programs. Thank You Lord, for raising up the LSEM to provide Christ-centered educational programs for these youth. Thank You for the mites that will provide scholarships for these youth. We ask that You bless this ministry as they train students in studies as well as in the Gospel of Jesus. In Jesus' Name we pray. Amen.



Rev. Essenburg, pastor of Charity Lutheran Church, Detroit, MI during an opening for the I CAN Learning Center program. Pastor shares the Gospel message with the children each day before they go to the learning centers.



Lutheran Women's Missionary League
P.O. Box 411993 • St. Louis, MO • 63141-1993
www.lwml.org • 1-800-252-5965

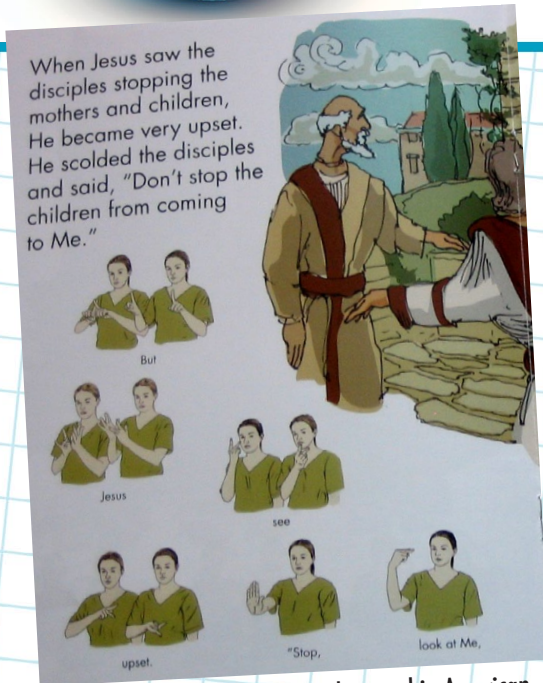
Find us on Facebook:
Lutheran Women
in Mission - LWML





Bible Story Books in Sign Language and Written Text

\$100,000



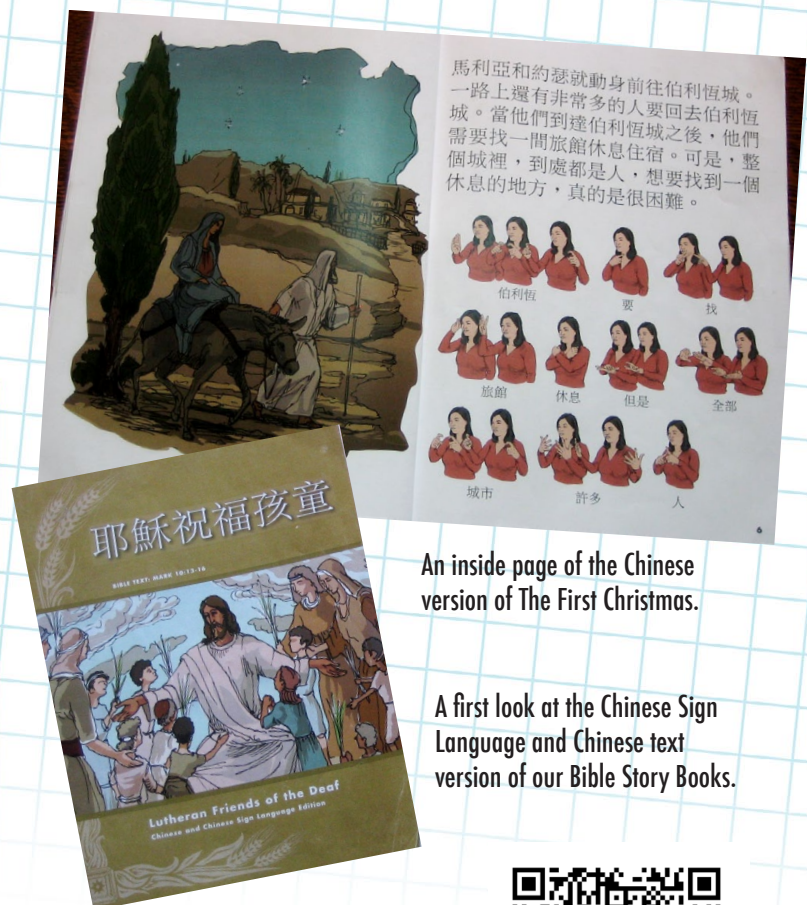
Bible Story Books completed and printed in American Sign Language and English written text.

LWML shows God's love to deaf children by funding the Lutheran Friends of the Deaf helping them to publish and distribute Bible Story Books to deaf children throughout the world, so that they may also learn of the love of Jesus.

We Pray Together...



Father God, You desire that all may know You and the Gospel message of Jesus. Yet most of the members of the deaf population are unchurched, including more than 95% of the deaf population in North America. We thank You for the Lutheran Friends of the Deaf and the work they do in providing resources for the deaf ministries in congregations throughout the world, as well as training leaders to serve in these ministries. We pray that the Bible Story Books series will open up the Gospel to many deaf children and their families. In the Name of Jesus' we pray. Amen.



An inside page of the Chinese version of The First Christmas.

A first look at the Chinese Sign Language and Chinese text version of our Bible Story Books.



Lutheran Women's Missionary League
P.O. Box 411993 • St. Louis, MO • 63141-1993
www.lwml.org • 1-800-252-5965

Find us on Facebook:
Lutheran Women
in Mission - LWML





Native American Outreach Training Center – Fairbanks, Alaska

\$95,000

LWML shows God's love to Alaska Natives by providing support to Lutheran Indian Ministries for the development of an Alaskan Mission Training Center, which will provide training for volunteers and Natives to reach out with the Gospel message to Native people and communities throughout Alaska.



A new look for the building. After finishing their week of service in the village, this Kansas servant team was especially grateful for the relationships they built and the work that was accomplished.

We Pray Together...



Dear Lord, You desire that all may know the saving message of Jesus Christ. Many Native people in Alaska face brokenness and abuse in their families and communities. They need to hear Your Good Word and receive Your healing grace. We thank You for raising up the Lutheran Indian Ministries, volunteers, and partners who have a heart for Native people in Alaska. May You bless the work of the Lutheran Indian Ministries and those who use the training center in sharing the Gospel of Jesus Christ with Native North American Nations and encouraging them to proclaim Christ's Kingdom to their own and to others. In Jesus' Name we pray. Amen.



In Point Hope, a whaling community where the Inupiat Eskimos are dependent on subsistence living, Rosemary helps young girls with a craft. Three volunteers taught the lessons and brought all the supplies needed for the week – including their own food.



Lutheran Women's Missionary League
P.O. Box 411993 • St. Louis, MO • 63141-1993
www.lwml.org • 1-800-252-5965

Find us on Facebook:
Lutheran Women
in Mission - LWML





Strengthening and Expanding Campus Ministry

\$100,000

LWML will share God's love on the college campuses of our nation by strengthening and expanding campus ministry through the online virtual LCMS U, reaching more than 100,000 students of The Lutheran Church—Missouri Synod (LCMS) across the United States on any and every campus.



Student Leadership at Ball State University in Muncie, IN

We Pray Together...



Heavenly Father, as LCMS students are scattered on college campuses throughout this nation, thank You for providing LCMS U as a common place to gather, get connected, learn, and grow online. During these college years of discovery, send Your Holy Spirit to strengthen the faith of these students so they reflect the light of Jesus Christ to those who are in darkness. In Jesus' precious name we pray. Amen.



New Campus Ministry leadership (left to right): Rev. Steven Cholak (Youth Ministry Project Manager), Rev. Jay Winters (Assistant Coordinator), Rev. Marcus Zill (Coordinator), Rev. Ian Pacey (Assistant Coordinator), Rev. Bart Day (Executive Director)



Lutheran Women's Missionary League
P.O. Box 411993 • St. Louis, MO • 63141-1993
www.lwml.org • 1-800-252-5965

Find us on Facebook:
Lutheran Women
in Mission - LWML





Worship for Shut-Ins

\$80,000

LWML shares God's love with senior citizens and the infirm through the "Reach and Preach" DVD service of Lutheran Ministries Media by providing copies of "Worship for Shut-Ins" broadcasts to Lutheran and non-Lutheran retirement and nursing care centers.



Grade school students visit the Worship for Shut-Ins studio.

We Pray Together...



Most precious Savior, You have charged us to "have mercy on our neighbors" and "to love our neighbors as ourselves." Bless this grant as it seeks to provide Your Word through the distribution of "Reach and Preach" DVDs to the ever-increasing number of seniors living in nursing homes and retirement centers. May Your Holy Spirit enter the hearts of unbelievers at these facilities to receive the saving Gospel of Jesus Christ and give strength and courage to all as they hear Your Word preached in its truth and purity. In Jesus' name. Amen.



Friendly volunteer serves as sound technician during recent recording session.



Lutheran Women's Missionary League
P.O. Box 411993 • St. Louis, MO • 63141-1993
www.lwml.org • 1-800-252-5965

Find us on Facebook:
Lutheran Women
in Mission - LWML





Preparing Leaders for a Diverse World

Concordia College, Selma, Alabama

\$50,000



Chaplain LaVaughan Wiggins leads Spiritual Life students in Bible Leadership Study

LWML shares God's love with students at Concordia College Alabama as it raises up African-American and African immigrant leaders to serve the diverse cultural needs of The Lutheran Church—Missouri Synod (LCMS) churches, schools, and daycare centers in predominately African-American communities.

We Pray Together...



Blessed Jesus, You instructed Your disciples to pray to the Lord of the Harvest to send laborers for Your vineyard. We too ask for church workers with special abilities to serve the diverse cultural needs of the LCMS and its Southern District. May Your Holy Spirit enter the hearts of African-American and African immigrant leaders to be trained at Concordia College Alabama as pastors, deaconesses, teachers, and daycare workers to serve in African-American communities throughout our diverse nation so that all may believe in Your saving grace and be heirs of Your Heavenly Kingdom. In Jesus' name we pray. Amen.



Concordia President Rev. Dr. Tilahun Menedo is committed to sharing the Gospel in a diverse campus and world.



Lutheran Women's Missionary League
P.O. Box 411993 • St. Louis, MO • 63141-1993
www.lwml.org • 1-800-252-5965

Find us on Facebook:
Lutheran Women
in Mission - LWML





Voice of Care Ministry to the Developmentally Challenged

\$50,600



Deaconess Jana also serves to bring the Gospel to many people with disabilities.

There are over 300,000 people with developmental disabilities in northern Illinois and ninety percent of them are not connected with a congregation. For 10 years, Voice of Care has continually reached out to these people through the efforts of two chaplains and many volunteers to bring the Gospel of Jesus Christ to where these people live and work. Voice of Care would like to tell its story throughout the The Lutheran Church—Missouri Synod to engage others in giving of their resources and to begin similar programs in their own communities. Voice of Care uses all of its present resources for outreach ministry and needs additional resources to upgrade its office technology and to create a variety of ways, including multi-media presentations, through which its story can be told.

We Pray Together...



Dear Heavenly Father, through the training and resources that Voice of Care provides, many congregations are reaching out through Sunday school, Bible studies, and respite care programs. Bless this grant, dear Lord, to bring the message of Christ to children and adults who are developmentally challenged. In Jesus' precious and saving name we pray, Amen.



Pastor Don helps residents in facilities to become part of the Body of Christ.



Lutheran Women's Missionary League
P.O. Box 411993 • St. Louis, MO • 63141-1993
www.lwml.org • 1-800-252-5965

Find us on Facebook:
Lutheran Women
in Mission - LWML





Christ-Centered Tutoring Through Rebecca's Garden of Hope (RGOH)

\$100,000

Rebecca's Garden of Hope (RGOH), a Christ-centered tutoring and mentoring outreach ministry, improves academic grades and increases church and Sunday school attendance. Many urban congregations are seeking an outreach model that can successfully be used to bring families to Christ. RGOH provided workshops to over fifty congregations and schools in the past year, offering this outreach model and access to a national networking system of resources for improving tutoring and mentoring outreach for all participants.



In May, 2012, Pastor Cobb baptized 8 youth on the same Sunday at Our Savior from the tutoring program. Youth and families are encouraged to be baptized shortly after they begin our tutoring program. Sanya Parson, Director of the program serves as sponsor.

We Pray Together...



Dear Lord, there are thousands of underprivileged at-risk children that live in unstable high-risk environments. Rebecca's Garden of Hope reaches out to provide a safe environment for these children's spiritual growth and to enhance their life skills. Bless this grant, dear Lord, so tutoring and mentoring can spiritually change these children's lives forever. In Jesus' name we pray, Amen.



Tutoring at Our Savior Lutheran Church,
Orlando, FL



Lutheran Women's Missionary League
P.O. Box 411993 • St. Louis, MO • 63141-1993
www.lwml.org • 1-800-252-5965

Find us on Facebook:
Lutheran Women
in Mission - LWML





Scholarships for MOST Ministries Mission Trips

\$20,000

LWML supports the development of mission-minded young people, providing scholarships to fifteen college and university students to go on short term mission trips with Mission Opportunities Short Term (MOST) Ministries, giving them experiences to inspire future work in the mission field.



"When you become a missionary people often ask how God led you to the vocation...this step was preceded by many others. One of the most memorable steps was my time serving on a team to Guatemala with MOST Ministries." LCMS missionary Serena Derricks

We Pray Together...



Dear Lord, we know that You desire all people to know the truth of salvation through Christ. You have given us life through Jesus Christ and also the opportunity to share Your life-giving Gospel with others. Thank You for the desire of these young people to go out and share Your Gospel with people throughout the world. Bless the funds provided by this LWML grant to help send students on short term mission trips. Bless the mission work that will be carried out and the life-changing experiences as the students and those they serve witness Your power and faithfulness in their lives. In Jesus' name we pray. Amen.



Sports evangelism mission trips create opportunities for relationships to be built, and faith conversations to take place between young people of different countries.



Lutheran Women's Missionary League
P.O. Box 411993 • St. Louis, MO • 63141-1993
www.lwml.org • 1-800-252-5965

Find us on Facebook:
Lutheran Women
in Mission - LWML





Building Homes and Hope in Haiti

\$100,000

The Lutheran Church—Missouri Synod (LCMS) Office of International Missions helps people in need in the clear name of Jesus Christ. It is currently working to provide permanent housing in Haiti through Building Homes and Hope in Haiti. The vision of the project is to build 300 homes in each of five locations in Haiti over the next few years. Families may apply to own a home through a loan or grant program.



Two Haitian women visit outside a "Building Homes and Hope in Haiti" home in Jacmel. Staff at each location will develop a maintenance schedule, emergency and safety procedures and enforce community living standards.

We Pray Together...



Dear Heavenly Father, there is a great need to fund the construction of homes in Haiti, providing permanent housing to families. Bless this LWML Grant, dear Lord. We thank and praise You that this project will be facilitated by an LCMS partner church in Haiti and thank You for the opportunity to help fund Building Homes and Hope in Haiti. In the name of Jesus we pray, Amen.



Haitian craftsmen apply a skim coat to cinderblock walls, a common building practice in Haiti. Local workers are employed to strengthen area economies that suffered greatly after the 2010 earthquake.



Lutheran Women's Missionary League
P.O. Box 411993 • St. Louis, MO • 63141-1993
www.lwml.org • 1-800-252-5965

Find us on Facebook:
Lutheran Women
in Mission - LWML





Support for Lutheran Public Radio

\$40,000



Deaconess Pam Nielsen and Rebekah Curtis in-studio for a two-hour interview on "The Challenges & Joys of Motherhood."

Support for Lutheran Public Radio will help provide additional office staff so that the director can devote more time toward development of the unprecedented opportunities to broadcast the Gospel of Jesus Christ to the world. LWML dollars will allow the program, Issues, Etc., sustainability and expansion for the next two years.

We Pray Together...



We pray that this LWML Grant will allow Lutheran Public Radio to continue to thrive, proclaiming the Word of salvation and a clear understanding of contemporary social issues in a Christian context. May the message it proclaims be a blessing to our Lord as well as to those that hear! In Jesus' Name we pray. Amen.



Pastor Christian Tiews of Tulsa, OK and members of his youth group visit Lutheran Public Radio.



Lutheran Women's Missionary League
P.O. Box 411993 • St. Louis, MO • 63141-1993
www.lwml.org • 1-800-252-5965

Find us on Facebook:
Lutheran Women
in Mission - LWML





Christian Educational Support – India



Most of these children are Hindu or Muslim yet they receive daily Bible teaching. You can help Concordia Gospel Outreach (CGO) provide more books for Bible and catechism instruction.

\$85,000

Christian Educational Support for Children - India will provide Bibles and catechisms in Spanish, French, and English for children who cannot afford them. Bible Story Cloths for oral learners in West Africa will also be purchased and used effectively. Lutheran educational programs must use financial resources for scholarships and teacher stipends, leaving little money for textbooks or curriculum.

We Pray Together...



Father in heaven, we ask that You give unto these children Your Holy Scripture that they may learn of Your salvation and treasure Your Word daily, so that they may grow and be nourished by the life-giving message and flourish and prosper in Your love and grace. In Jesus' Name we pray. Amen.



As part of Christian education, these children practice memory work by reciting Scripture and doctrines of the Christian faith. You can help Concordia Gospel Outreach (CGO) provide more books for Bible and catechism instruction.



Lutheran Women's Missionary League
P.O. Box 411993 • St. Louis, MO • 63141-1993
www.lwml.org • 1-800-252-5965

Find us on Facebook:
Lutheran Women
in Mission - LWML





Mission Outreach at St. Paul Community Lutheran Church - Pontiac, Michigan

\$65,559

St. Paul congregation is the only remaining congregation of The Lutheran Church—Missouri Synod in Pontiac and has been blessed with new beginnings and rapid growth. LWML funding assistance will provide urgently needed resources for stability and development in youth ministry, outreach, and staff for reaching the community.



Suffer the Children to come unto Me

We Pray Together...



Oh Lord, bless the efforts of those who want to share Jesus in Pontiac. Guide them as they renovate their facilities so that they can better serve their community with the love of Your Son, Jesus. May each of Your beloved that receive care and support in this outreach ministry come to a solid realization of Your promises, faithfulness, and truth. In Jesus' Name we pray. Amen.



Hope and Safety for Youth



Lutheran Women's Missionary League
P.O. Box 411993 • St. Louis, MO • 63141-1993
www.lwml.org • 1-800-252-5965

Find us on Facebook:
Lutheran Women
in Mission - LWML

