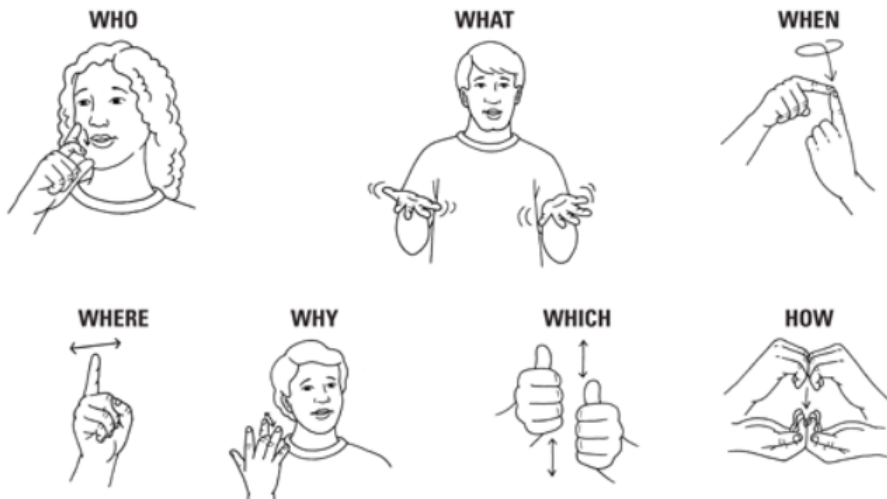


◆ ONE-WORD QUESTIONS IN AMERICAN SIGN LANGUAGE

Signing one-word questions in American Sign Language (ASL) is a way to initiate small talk, get to know people, and gather information. When you sign these one-word questions, look inquisitive; the facial expression will come naturally when you are genuinely interested. Also, tilt your head and lean forward a little as you sign the question.



RESOURCE LINKS

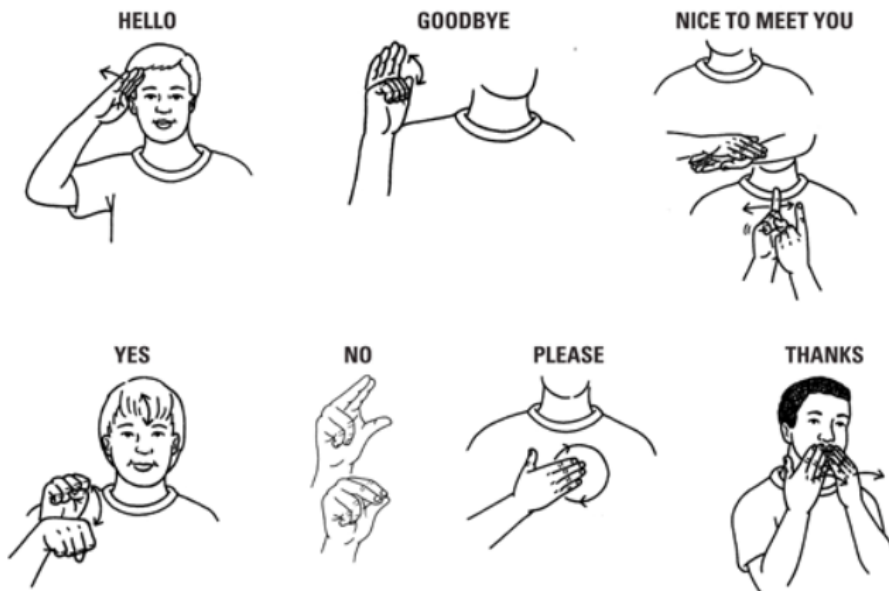
<http://deafjesus.org/>

<https://www.lutherandeafoutreach.org>

<https://www.handspeak.com/>

◆ ASL: SIGNING ESSENTIAL EXPRESSIONS

Practice signing these basic expressions in American Sign Language (ASL) to meet and greet people, join in on conversations, answer questions, and be polite and courteous.





When we look at the LWML Mission, Vision, and Primary Focus statements, we see these words: assist each woman, each woman is welcomed, we offer each woman, we accept and encourage each woman, we equip each woman.

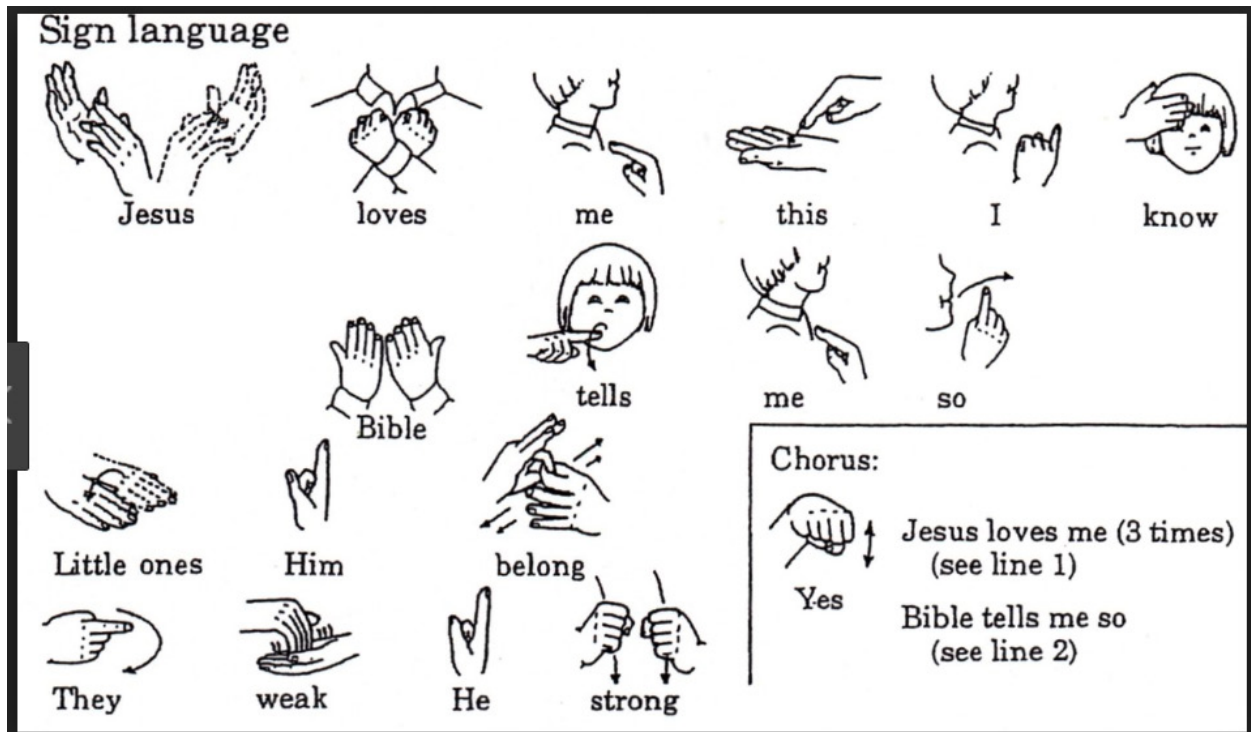
“Envisioning a world where the deaf community participates equally and fully in the body of Christ” is the vision of the Lutheran Friends of the Deaf.

We have deaf sisters in many of our LCMS churches. Sometimes we don't reach out because of the language barrier. We think we cannot communicate, but we can with love.

This is an opportunity to equip ourselves to support the encourage “each” deaf woman in our church.

Special Focus Ministries has led the intentional outreach programs for young women and multicultural women for many years. To be true to our statements of each women, we need to intentionally reach out to our deaf sisters to involve them in active participation in the LWML.

Sign language



Jesus loves me this I know
Bible tells me so
Little ones Him belong
They weak He strong

Chorus:
Jesus loves me (3 times)
(see line 1)
Yes
Bible tells me so
(see line 2)