

Crosstalk

April 2024

Monthly Duties

Ushers (should arrive by 9:15):

Brent Gottfried
David Craig
Chase Ray
Joe Stansbery

Greeters:

Marcy Cranston & Becky Vaughn (west)

Assisting Ministers:

7 – Sheryl Clinger
14 – Abbi Ault
21 – Matt Schultz
28 – Jim Ruhlen

Acolytes:

7 – Abbi Ault & Erica Ruhlen
14 – Brody Mays & Robert Roszman
21 – Adrianna Ray & Harper Fahle
28 – Robert Roszman & Ian Seal

Readers:

7 – Jill Eyestone
14 – Emily Ruhlen
21 – Becky Vaughn
28 – Darlene Mooney

Communion Assistants:

Jane Smalley & Linda Rinderknecht
Jocelyn & Drew Lightey on the 14th

Bread Baker: Michelle Halter

Host in The Gathering Place:

7 – Marcy Cranston & Becky Vaughn
14 – Tim & Shannon Ray
21 – David & Rosie Craig
28 – Jill Eyestone

St. Paul Lutheran
120 North 8th Street
419-294-2831
stpaulupper@gmail.com



Pastor:

Barry Halter, Jr.
419-852-9823
pastorbarryhalter@gmail.com

Administrative Assistant:

Beth Collins
419-294-8326
bjcollins8326@gmail.com

Office Hours:

Closed Monday & Wednesday
Tuesday, Thursday & Friday:
8am-12pm, 1-5pm

Website:

www.stpaulupper.org

2024 Council Members:

Jacob Badenhop 419-572-9964
Chad Baker 614-309-4104
Katie Clark 419-310-9889
BJ Ford 419-619-2166
Jean Hollanshead 419-310-0447
Rick Kraus 419-310-8395
Tim Ray 419-310-1313
Matt Schultz 419-552-4465
Melissa Summit 419-310-2788



APRIL 2024



Sunday	Monday	Tuesday	Wednesday	Thursday	Friday	Saturday
	1	2 6:30pm BB 7pm AB	3 8-12:45pm WC 12-2pm CFC	4 1-3pm CFC 7pm S&S via Zoom	5 12-2:15pm WC 3pm WELCA Board 4:30pm LL follow up	6
7 8:45am Staff meeting 9am Adult SS 10am Worship	8 3:12pm ONCE IN A LIFETIME TOTAL ECLIPSE!!!	9 5:30pm CS 6:30pm BB 7pm AB	10 8-12:45pm WC 9:30am R/N Circle 12-2pm CFC 7:30pm WOW	11 1-3pm CFC 7pm Martha Circle	12 12-2:15pm WC 5pm wedding rehearsal	13 3:30pm Graboski & Farabaugh wedding
14 8am Council 8:30am 4 S's 9am Adult SS 10am Worship 11am Choir 5-8pm 4H meeting	15 8:30am Pinning & Knotting	16 5:30pm CS 6:30pm BB 7pm AB	17 8-12:45pm WC 12-2pm CFC 7:30pm WOW	18 1-3pm CFC	19 12-2:15pm WC	20 10am-noon CFC 10am-noon Free Community Meal 3-7pm FH in use Blue & Gold Banquet
21 9am Adult SS 9:15am Choir 10am Worship 11am Choir 11:30am S&S	22 8:30am Pinning & Knotting	23 6:30pm BB 7pm AB 7:30pm MM	24 8-12:45pm WC 12-2pm CFC 7:30pm WOW	25 1-3pm CFC	26 12-2:15pm WC	27
28 9am Adult SS 10am Worship 11am Choir 5-8pm 4H meeting	29 8:30am Pinning & Knotting	30 6:30pm BB 7pm AB	R/N = Ruth/Naomi Circle FH = Fellowship Hall MM = Mutual Ministry	BB = Beginning Bells CFC = Christian Food Center LL = Lenten Luncheon	AB = Advanced Bells WC = Wyandot Cares classes SS = Sunday School	WOW = Word on Wednesday CS = Cub Scouts S&S = Safety & Security



- 3 – Addie Barth
- 3 – Brent Fahle
- 3 – Breanna Koehler
- 3 – Quinn Weaver
- 4 – John Grafmiller
- 6 – Madeline Webster
- 9 – Michelle Ohler
- 15 – Gary Ault
- 15 – Joey Cipriany
- 15 – Savannah Cipriany
- 17 – Miles Weaver
- 23 – Paul Baum
- 24 – Konner Holloway
- 25 – Bruce Decker
- 29 – Kelsey Bash
- 29 – Bill Bricely
- 30 – Ann Kemerley



- 20 – Larry & Madeline Webster **Happy 46th**
- 25 – Jared & Ana Barth **Happy 9th**
- 28 – Bill & Jane Bricely **Happy 22nd**



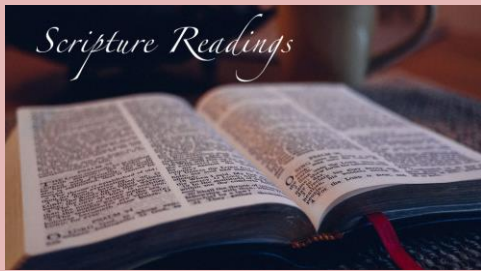
**We are collecting
Pasta & Rice
for the Christian Food Center this month.
Please bring your donations forward
during the offering.
Thanks for your help!**



We're still collecting...



These must state "Manufacturer's Coupon" on them. No store coupons, internet coupons, or restaurant coupons can be used. We can send only coupons that are not expired more than 3 months. Please clip them and sort them into 4 categories: Food, Non-food, Baby, and Pet. There are collection containers at the crosswalk or you can drop them off at the office. These are used in overseas military commissaries. Thanks in advance!!!



April 7

Acts 4:32-35
Psalm 133
1 John 1:1—2:2
John 20:19-31

April 14

Acts 3:12-19
Psalm 4
1 John 3:1-7
Luke 24:36b-48

April 21

Acts 4:5-12
Psalm 23
1 John 3:16-24
John 10:11-18

April 28

Acts 8:26-40
Psalm 22:25-31
1 John 4:7-21
John 15:1-8



April's Mission Outreach budgeted dollars
will go to

ST. PAUL'S RADIO/MEDIA FUND.

If you wish to donate to this fund,
please use a separate envelope apart from
your offering and mark it Radio/Media.

Thanks!!!

Women of the
ELCA

Ruth/Naomi Circle
will meet **Wednesday,**
April 10th
at **9:30am** in
The Gathering Place.

Martha Circle
will meet **Thursday, April 11th**
at **7pm** in the
Adult Sunday School room which is
beside the kitchen in the lower level of
the church.

All are welcome!



Total Solar Eclipse

April 8, 2024

Join us for

The 4 S's

(Second Sunday Social Stint)

When: Second Sunday of each month

Where: Youth Room on the 3rd floor

Time: 8:30-9:30am

Why: For faith, fun, & fellowship

Who: all youth in grades 6-12

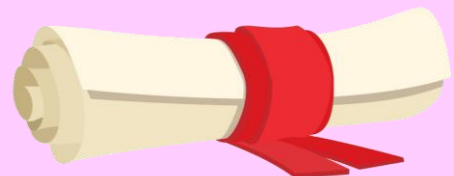
Friends in Faith kids' choir ALWAYS sing or play bells on the 2nd Sunday of the month. Please have them at church by 9:40 to go over the songs! Thanks!



Friends in Faith Choir

SCHOLARSHIP

The Women of St. Paul are excited to announce that applications for the Women of St. Paul Scholarship are open! This is for anyone enrolled in secondary education of any kind! Applications must be turned in by June 1st. The scholarships will be awarded the last Sunday in June (June 30th). Applications can be picked up at the office during office hours or before or after worship!



2024 TOTAL SOLAR ECLIPSE

APRIL 8, 2024 • WYANDOT COUNTY



Source: ohio.org/home/eclipse/

- The April 8, 2024, total solar eclipse will cast the shadow of the moon over a 124-mile-wide band in Ohio.
- Parts of Wyandot County are on the centerline of the path of totality. We'll witness the maximum amount of darkness (about 4 minutes).
- We expect people who follow eclipses to flock to this center line to experience it with us. Our population could triple to 60,000 during this event.
- The increase in population may put a strain on our infrastructure and could cause some traffic issues.

EXPECT...



COMMUNICATION DIFFICULTIES

Cell towers, internet services, apps, and maps may not work as expected. Make a plan for how you'll contact help in an emergency and stay in touch with loved ones. Save or screenshot important information before the eclipse.



GRIDLOCKED TRAFFIC

The 2021 total solar eclipse resulted in gridlocked traffic. People may pull off on the roadside to watch. Stay home to watch the eclipse. If you must go out, know that travel times could be extended. Stock your vehicle with essentials, just in case.



The eclipse will start at 2 p.m. Full darkness will start at 3:10 p.m. and last nearly 4 minutes. The eclipse will end around 4:30 p.m.

EYE SAFETY

You must use special eclipse glasses (ISO 12312-2 standard) to look at the sun. Sunglasses aren't strong enough!



Get free glasses through Wyandot County Public Health and local libraries. If you buy glasses, make sure they come from reputable vendors!

STOCK UP ...



GAS

Start the eclipse weekend with a full tank of gas. It may take a few days after the Eclipse to restock.



ESSENTIALS

Food, medication, paper products... Grab what you need for your entire household (including pets!) to get you through the weekend and a few days after the eclipse.



CASH

It's possible that phones, internet services, and card readers won't work like normal. Hold on to some cash in case you need to buy essentials.