



# First Lutheran Church & Little Lambs Preschool

6300 Southern Maryland Blvd., Huntingtown, MD 20639

"Joyfully Proclaim God's Word and Enthusiastically Share Christ's Love!"

Web: [www.firstlutheranchurch.org](http://www.firstlutheranchurch.org) • FLC Ph: 410-257-3030 • LLPS Ph: 410-257-3530

*Epiphany*



## Sunday Services (Communion every Sunday)

**Traditional  
Worship 8:00 am**  
(In-Person/Online)

**Contemporary  
Worship 10:45 am**  
(In-Person/Online)

## Sunday School

Children's Sunday School,  
Adult Bible Class &  
Confirmation Class 9:30 am

## Monthly

### Communion

2nd Wed. of the month  
1:15 pm

## Wednesday

### Evening Service

6:30 pm

January 28, 2024 Fourth Sunday after Epiphany

### Words from our Pastor...

Dear Children of God,

All of us know things. We've read books, gone to school, learned from friends. But just knowing something isn't the same as knowing how to use it. For example, a lot of people might know that one uses a jack to lift a car to change a flat tire. But do they know how to use the jack to lift the car to change a flat tire? Just knowing a jack lifts a car doesn't enable you to use it to do so – unless you know how. "Know-how" is more important than "know."

What goes for jacks also goes for Jesus. While knowing of Jesus is a good first step in a life of faith, it is nowhere near the end. We see a good example of this when Jesus encounters a demon-possessed man in a synagogue. The demon cries out to Jesus, "*What have You to do with us Jesus of Nazareth? Have You come to destroy us? I know who You are – the Holy One of God.*" (Mark 1:24) This demon knows a lot about Jesus ... His hometown – Nazareth. His mission – destroy evil. Who He is – God's Holy One. Good facts to know, but more important is

using knowledge to have faith in Jesus and His ability to save you from the eternal effects of the evil one – the sins Satan tempts us into committing and the eternal separation from God Satan hopes to achieve.

Jesus, by His death on the cross destroys the evil one – as His Father in heaven sent Him to do. By destroying the evil one, Jesus destroys his ability to eternally separate us from our heavenly Father – paying the price needed to free us from sin's power to separate us from God by enabling us to be forgiven. Thus forgiven, every time we sin and confess our sins to God, we're cleansed, made righteous, and joined with Jesus in the eternal kingdom of God. It's good to know this so we can trust God as we call on Him in all things.

Your Brother in Christ,  
Pastor Jim



## COLLEGE STUDENT CARE PACKAGES

**We are sending out care packages to First Lutheran's out-of-town college students. Please consider donating to the box located in the lobby at the church. We will take, individually wrapped snacks, toiletries or other fun items through **FEBRUARY 4TH**.**



## THIS WEEK'S ISSUE

- ♦ Worship Info & Bible Studies .....2
- ♦ Outreach & Fellowship.....3
- ♦ Stewardship.....4
- ♦ Prayer Ministry.....5
- ♦ January Anniversaries & Birthdays.....8

Prepare for worship this Sunday, our readings for Jan 28<sup>th</sup> are  
Deuteronomy 18:15-20; 1 Corinthians 8:1-13; Mark 1:21-28

## FIRST LUTHERAN CHURCH STAFF

**James E. Kent**  
Pastor

**DCE Shawn Maassel**  
Family Life Ministry

**DCE Susan Fogleman**  
Youth Director

**Stephanie Sainsbury**  
Admin. Church Secretary

**Dr. Robert Beeson**  
Music Director

**Marilyn Beeson**  
Accompanist/Organist

## LITTLE LAMBS PRESCHOOL

**Stephanie Mosely**  
Little Lambs Director

**Jessica Cook**  
Administrative Assistant

NOTES  
FIRST

# BIBLE CLASSES



Worship  
Information  
for



**First Lutheran LIVE!**

First Lutheran Live offers live access to worship services, Bible Studies, classes, and small groups through Zoom. The livestream opens 15 minutes before services start to enable you to catch up with others in virtual fellowship. Please submit prayer requests and any questions you may have about the readings, message, or other areas through Zoom's chat feature.

## ZOOM LINK

<https://us02web.zoom.us/j/88993441481>

Please call the church office for passcode

### Joining the Service by Phone?

Call 301-715-8592 and  
enter the following code:  
88993441481

## † SUNDAY †

### Sunday Morning Sunday School and Bible Classes

Join us Sunday Mornings: Children's Sunday School,  
Confirmation, Youth & Adult classes  
from 9:30 am—10:30 am.

## SUNDAY ADULT BIBLE STUDY

### Digging Deeper...

Join us on Sunday morning at 9:30, as we dig deeper into the lessons of the week. We will be following the Lectionary and taking a look at the context behind each week's Holy Scriptures. I hope to see you there as we explore God's Word.—*David Chenevert*

## DISCOVERY CLASS

First Lutheran Discovery Class with Pastor Jim ... Are you interested in learning more about what we believe, teach, and confess about God's Word, the gift of His Sacraments, and how we live our lives as His children? Are you new to First Lutheran and desire to know more about how you can participate in the life of God's Church here? **Each week at 9:30 am and running through Feb. 11th**, join me for a class called "Discovery" that answers these and other questions you might have. We will meet for about an hour in the Church Library between Sunday services. Please "RSVP" to Pastor Jim by calling the office or sending him an email at [pastor@firstlutheranchurch.org](mailto:pastor@firstlutheranchurch.org). I look forward to spending time in God's Word with you in this class. – *Pastor Jim Kent*

## SUNDAY EVENING

### Ladies Bible Study

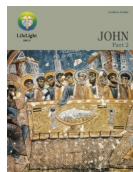
Ladies, join us on Sunday nights via Zoom from January 21st through March 17 as we take a look at *Navigating Gospel Truth* by Rebecca McLaughlin. You can purchase the book at [Lifeway.com](http://Lifeway.com) or on



Amazon. Please let Shawn Maassel know that you plan to participate so she can send you the link to join. Email her at [smaassel@firstlutheranchurch.org](mailto:smaassel@firstlutheranchurch.org) or [smaassel@comcast.net](mailto:smaassel@comcast.net).

## † MONDAY †

### "Beautiful Feet" Bible Study



How frequently do we turn to the book of Psalms to find comfort? What the book of Psalms is to the Old Testament the Gospel of John is to the New Testament in the opinion of many. It is a refuge, a harbor. Come dig deeply into the **Gospel of John (Part II)** in an online study group meeting on Monday evenings starting in January (TBD). Contact the Church Office at [flc@firstlutheranchurch.org](mailto:flc@firstlutheranchurch.org) for information on how to receive a Zoom link from Dawn Boyd. The group meets at 7:30 PM Eastern time on Mondays on a weekly basis. Purchase the needed study guide from *Concordia Publishing House*.

## † WEDNESDAY †

### Lunch Bunch Bible Study

**The Gospel of John (Next class—February 14th)**

Lunch Bunch meets on the **2nd and 4th Wednesdays of the month**. We'll gather at **11:30 am** for fellowship and bag lunch followed by the study at 12 Noon. This time around we'll be immersing ourselves in the Gospel of John. **If interested in attending, please let Pastor Jim know so we can have books available for you.**

## † SATURDAY †

### Saturday Bible Study for All!

Our Saturday morning Bible study is now open to all—men, women, young, old, anyone who has an interest in understanding the Word of God. The Saturday morning study meets every week via Zoom (<https://zoom.us/j/339451332>) from **10:00am-12:00pm**. Our study usually revolves around the Sunday scriptures of the week so it's a great way to prepare for Sunday worship! The study isn't a verse-by-verse lecture, but a discussion guided by the study leader. This type of study allows us to get to know each other better. After all, how can we love one another if we don't know each other? Why not join us?



## Ministry Assistants Sunday, Jan. 28, 2024

	8:00 am	10:45 am
Acolyte	Sophia Sigmon	Lillian Heisler
Readers	Sabrina Sigmon	Lisa Kennedy
Usher	Keith Sainsbury	Paul Eastwood
Altar Guild	Stephanie Sainsbury	Tricia Smeltzer
SS Setup Takedown	Dillons AHG	

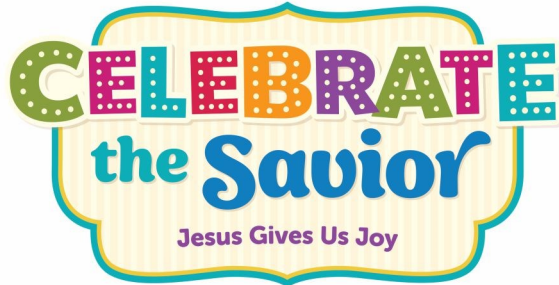


# OUTREACH



# FELLOWSHIP

## VBS 2024



Dates: July 8-12, 2024

Ages: Pre-K (age 4) thru 5<sup>th</sup> grade Fee: \$35/person

For Registration please visit

<https://vbsmate.com/firstlutheranhuntingtownmd>

or click on our "Vacation Bible School" tab on the menu and click on the link under **VSF 2024**

*Christ*  
The Way, the Truth,  
and the Life.

JOHN 14:6

## THIS WEEK at First Lutheran Church

All Worship: In-person-Livestreamed

### Fourth Sunday after Epiphany

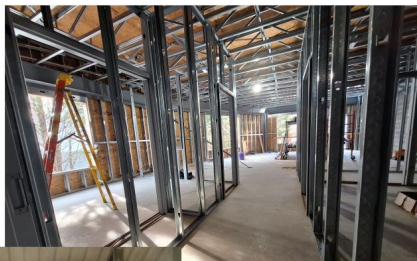
Sun	28	Traditional Worship Service	8:00 am
		Adult Bible Study, Sunday School, Confirmation Class	9:30 am
		Contemporary Worship Service <b>Baptism of Mackenzie &amp; Cameron Olexa</b> <b>LLPS Children Singing</b>	10:45am
		American Heritage Girls	3:00 pm
		Ladies Sunday Night Bible Study	6:30 pm
Mon	29		
Tues.	30	Body & Soul	6:00 pm
Wed	31	Evening Worship Service Praise Team Rehearsal	6:30 pm 7:30 pm
Thurs	1	Body & Soul	9:30 am
Fri	2	<b>OFFICE CLOSED</b>	

### Fourth Sunday after Epiphany

Sun	4	Traditional Worship Service	8:00 am
		Adult Bible Study, Sunday School, Confirmation Class	9:30 am
		Contemporary Worship Service,	10:45am
		Ladies Sunday Night Bible Study	6:30 pm

For more info go to [www.firstlutheranchurch.org](http://www.firstlutheranchurch.org)

**Little Lambs,  
Youth,  
Worship Ministry  
Addition Progress**



**Progress  
is moving  
slow but  
moving  
right  
along.**



*I can do ALL THINGS  
through Christ  
who STRENGTHENS me.*  
—Phillippians 4:13





# Stewardship

GIVE...BECAUSE HE FIRST GAVE

God calls us to work in His vineyard using the gifts He has given us all – the time associated with our lives; the talents of knowledge, skills, and abilities to be His hands, feet, eyes, ears, and lips in the world; and our treasure. He calls us to use these gifts generously, trusting Him to replenish them as needed, to serve His church and the world. Please prayerfully consider how God is calling you to serve Him with the gifts He has given you.

## TIME

**Feed the Homeless:** FLC feeds Calvert County's homeless at Project Echo the 2nd Saturday of each month (Feb. 10). Please see signups and recipes at [www.firstlutheranchurch.org/outreach](http://www.firstlutheranchurch.org/outreach).

## TREASURE

You can continue your support of First Lutheran Church by:

1. **On-line:** [firstlutheranchurch.org/donate-now](http://firstlutheranchurch.org/donate-now) (be sure to enter the web address carefully)
2. **Mail:** First Lutheran Church, 6300 Southern Maryland Blvd., Huntingtown, MD 20639
3. **Drop off:** at the Church office, either in the outside mailbox, or in Secretary's mail slot in the church hallway.



Therefore encourage one another  
and build each other up, just as  
in fact you are doing.

1 Thessalonians 5:11

## Your Treasure Supports the Administration of Ministries

Jesus calls us to be "in the world" not "of the world" (John 15:19). Because we are "in the world" we have obligations to the world—utilities, insurance, mortgage, and other bills - which come due each month so we can worship God, study His word, and care for His people. The tithes and offerings of God's people help pay these bills. In our current fiscal year, the administration budget includes:

- ♦ Licenses for software & equipment; Supplies for bulletins, Sunday School, restrooms, and cleaning: \$18,000
- ♦ Utilities (Electric, Internet, Trash Removal): \$23,000
- ♦ Property Services (Janitorial, Mowing/Snow Removal, Maintenance): \$20,000
- ♦ Property, Liability, and Workman Comp Insurance: \$15,000
- ♦ Mortgage: \$35,000



Let us think of ways to motivate  
one another to acts of love and  
good works Hebrews 10:24



THEY ALL ATE  
AND WERE  
SATISFIED.

MATTHEW 14:20