



# First Lutheran Church & Little Lambs Preschool

6300 Southern Maryland Blvd., Huntingtown, MD 20639

"Joyfully Proclaim God's Word and Enthusiastically Share Christ's Love!"

Web: [www.firstlutheranchurch.org](http://www.firstlutheranchurch.org) • FLC Ph: 410-257-3030 • LLPS Ph: 410-257-3530

*Epiphany*



## Sunday Services (Communion every Sunday)

**Traditional  
Worship 8:00 am**  
(In-Person/Online)

**Contemporary  
Worship 10:45 am**  
(In-Person/Online)

## Sunday School

Children's Sunday School,  
Adult Bible Class &  
Confirmation Class 9:30 am

## Monthly Communion

2nd Wed. of the month  
1:15 pm

**Wednesday  
Evening Service**  
6:30 pm

January 21, 2024 Third Sunday after Epiphany

## Words from our Pastor...

*Dear Brothers and Sisters in Christ,*

Hearing ... and listening – they are different. We hear all the time. A sound wave hits your ear; your brain processes the wave into noise – even when we aren't thinking about it. Listening, however, is entirely different. Listening is "giving your attention to the noise you hear." It's a conscious decision to listen.

One of the themes of God's word this time of year is "listening" ... versus simply "hearing" and then moving on. A good example is Jonah in the Old Testament. Jonah heard God tell him, "Go to Ninevah and tell them how evil they are!" Jonah knew God wanted Israel's evil enemies to know Him so He could save them. But rather than listen to God and go, Jonah fled from God – right into the whale's belly. (Jonah 1)

So, God spoke to Jonah again saying, "I'm serious! Go to Ninevah and tell them how evil they are!" This time Jonah ... listened. Jonah paid attention to God and did what God told him to do. And what do you know?! Ninevah turned from its evil and God saved them. (Jonah 3) Because Jonah listened, God spared the lives of over

120,000 people. Listening is important!

Thankfully people like Peter and Andrew, James and John listened when God called them to follow Him and become "fishers of men." (Mark 1:16-20) Because they listened to Jesus, today the word of God is heard all around the world – including in our own ears. But here's the question ... are we just hearing – like Jonah ... or are we also listening – like those first apostles Jesus called?

If we're just hearing, know this – God is relentless, and He'll keep speaking to us by the power of the Holy Spirit speaking through those who have listened. I pray you'll turn from being a hearer of God to a listener. And if you are listening, I pray you then take the next step and become a doer of God's word. That others may also come to faith, repent, and be saved.

*In Christ's Love,*  
Pastor Jim



It is always with a mixture of sadness and joy that we face the passing of friends and family. Sadness because their deaths leave a hole in our lives. Joy because we know God's promises to receive His children into His holy and eternal presence. I am at once sad and joyful to let you know that our brother-in-Christ JR Kahl passed away suddenly on January 16, 2024. **Services will be held at First Lutheran on Saturday, January 20 at 1:00pm.** A reception including light food will be held after the service at **The Brick Wood Fired Bistro**, 60 Sherry Lane, Prince Frederick MD 20678. If you would like to send cards or notes of encouragement, please send them to Ronnie Kahl, 1180 Thompson Court, St. Leonard, MD 20685.

## THIS WEEK'S ISSUE

- ♦ Worship Info & Bible Studies .....2
- ♦ Outreach & Fellowship.....3
- ♦ Stewardship.....4
- ♦ Prayer Ministry.....5
- ♦ January Anniversaries & Birthdays.....8

Prepare for worship this Sunday, our readings for Jan 21<sup>st</sup> are  
Jonah 3:1-5, 10; 1 Corinthians 7:29-35; Mark 1:14-20

## FIRST LUTHERAN CHURCH STAFF

**James E. Kent**  
Pastor

**DCE Shawn Maassel**  
Family Life Ministry

**DCE Susan Fogleman**  
Youth Director

**Stephanie Sainsbury**  
Admin. Church Secretary

**Dr. Robert Beeson**  
Music Director

**Marilyn Beeson**  
Accompanist/Organist

## LITTLE LAMBS PRESCHOOL

**Stephanie Mosely**  
Little Lambs Director

**Jessica Cook**  
Administrative Assistant

FIRST NOTES

# BIBLE CLASSES



Worship  
Information  
for



**First Lutheran LIVE!**

First Lutheran Live offers live access to worship services, Bible Studies, classes, and small groups through Zoom. The livestream opens 15 minutes before services start to enable you to catch up with others in virtual fellowship. Please submit prayer requests and any questions you may have about the readings, message, or other areas through Zoom's chat feature.

## ZOOM LINK

<https://us02web.zoom.us/j/88993441481>

Please call the church office for passcode

### Joining the Service by Phone?

Call 301-715-8592 and  
enter the following code:  
88993441481

## † SUNDAY †

### Sunday Morning Sunday School and Bible Classes

Join us Sunday Mornings: Children's Sunday School,  
Confirmation, Youth & Adult classes  
from 9:30 am—10:30 am.

## SUNDAY ADULT BIBLE STUDY

### Digging Deeper...

Join us on Sunday morning at 9:30, as we dig deeper into the lessons of the week. We will be following the Lectionary and taking a look at the context behind each week's Holy Scriptures. I hope to see you there as we explore God's Word.—*David Chenevert*

## DISCOVERY CLASS

First Lutheran Discovery Class with Pastor Jim ... Are you interested in learning more about what we believe, teach, and confess about God's Word, the gift of His Sacraments, and how we live our lives as His children? Are you new to First Lutheran and desire to know more about how you can participate in the life of God's Church here? **Each week at 9:30 am and running through Feb. 11th**, join me for a class called "Discovery" that answers these and other questions you might have. We will meet for about an hour in the Church Library between Sunday services. Please "RSVP" to Pastor Jim by calling the office or sending him an email at [pastor@firstlutheranchurch.org](mailto:pastor@firstlutheranchurch.org). I look forward to spending time in God's Word with you in this class. — *Pastor Jim Kent*

## SUNDAY EVENING

### Ladies Bible Study

Ladies, join us on Sunday nights via Zoom from January 21st through March 17 as we take a look at 'Navigating Gospel Truth' by Rebecca McLaughlin. You can purchase the book at [Lifeway.com](http://Lifeway.com) or on Amazon. Please let Shawn Maassel know that you plan to

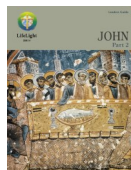


participate so she can send you the link to join.

## † MONDAY †

### "Beautiful Feet" Bible Study

How frequently do we turn to the book of Psalms to find comfort? What the book of Psalms is to the Old Testament the Gospel of John is to the New Testament in the opinion of many. It is a refuge, a harbor. Come dig deeply into the **Gospel of John (Part II)** in an online study group meeting on Monday evenings starting in January (TBD). Contact the Church Office at [fic@firstlutheranchurch.org](mailto:fic@firstlutheranchurch.org) for information on how to receive a Zoom link from Dawn Boyd. The group meets at 7:30 PM Eastern time on Mondays on a weekly basis. Purchase the needed study guide from *Concordia Publishing House*.



## † WEDNESDAY †

### Lunch Bunch Bible Study

The Gospel of John (Next class—January 24th)

Lunch Bunch meets on the **2nd and 4th Wednesdays of the month**. We'll gather at **11:30 am** for fellowship and bag lunch followed by the study at 12 Noon. This time around we'll be immersing ourselves in the Gospel of John. **If interested in attending, please let Pastor Jim know so we can have books available for you.**

## † SATURDAY †

### Saturday Bible Study for All!

Our Saturday morning Bible study is now open to all—men, women, young, old, anyone who has an interest in understanding the Word of God. The Saturday morning study meets every week via Zoom (<https://zoom.us/j/339451332>) from **10:00am-12:00pm**. Our study usually revolves around the Sunday scriptures of the week so it's a great way to prepare for Sunday worship! The study isn't a verse-by-verse lecture, but a discussion guided by the study leader. This type of study allows us to get to know each other better. After all, how can we love one another if we don't know each other? Why not join us?



## Ministry Assistants Sunday, Jan. 21, 2024

	8:00 am	10:45 am
Acolyte	Garrett Dillon	Colt Hanna
Readers	Kristy Lester	Tammy Salo
Usher	Scott Lester	Scott Salo
Altar Guild	Tricia Smeltzer	Tricia Smeltzer
SS Setup Takedown	Maassels Salos	

# OUTREACH



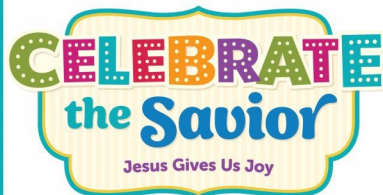
# FELLOWSHIP

## COLLEGE STUDENT CARE PACKAGES

We are sending out care packages to First Lutheran's out-of-town college students. Please consider donating to the box located in the lobby at the church. We will take, individually wrapped snacks, toiletries or other fun items through **FEBRUARY 4TH.**



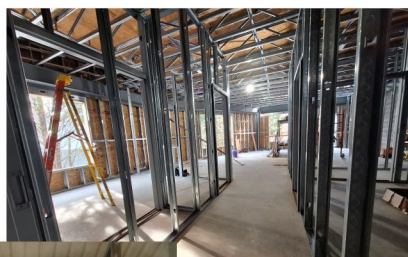
## VBS 2024



Dates: July 8-12, 2024  
Ages: PreK (age 4) thru 5<sup>th</sup> grade  
Fee: \$35/person

For Registration please visit  
<https://vbsmate.com/firstlutheranhuntingtownmd>  
or click on our "Vacation Bible School" tab on the menu and click on the link under **VS2024**

**Little Lambs,  
Youth,  
Worship Ministry  
Addition Progress**



**Progress  
is moving  
slow but  
moving  
right  
along.**



## THIS WEEK at First Lutheran Church

All Worship: In-person-Livestreamed

### Third Sunday after Epiphany

Sun	21	Traditional Worship Service	8:00 am
		Adult Bible Study, Sunday School, Confirmation Class	9:30 am
		Contemporary Worship Service Baptism of Benjamin Olsen	10:45am
		Youth Group	12:15 pm
		Ladies Sunday Night Bible Study	6:30 pm
Mon	22	Family Registration for LLPS	8:00 am
Tues.	23	Body & Soul	6:00 pm
		Deacons Meeting	7:00 pm
Wed	24	Lunch Bunch Bible Study	11:30 am
		Evening Worship Service Praise Team Rehearsal	6:30 pm 7:30 pm
Thurs	25	Body & Soul	9:30 am
Fri	26	OFFICE CLOSED	

### Fourth Sunday after Epiphany

Sun	28	Traditional Worship Service	8:00 am
		Adult Bible Study, Sunday School, Confirmation Class	9:30 am
		Contemporary Worship Service, LLPS Children singing Baptism of Mackenzie & Cameron Olexa	10:45am
		American Heritage Girls	3:00 pm
		Ladies Sunday Night Bible Study	6:30 pm

For more info go to [www.firstlutheranchurch.org](http://www.firstlutheranchurch.org)



# THANK-YOU!



Thanks to all who donated gently used sneakers for the Sneakers-4-Good collection over the holidays. I will keep the collection on-going and send off donations as they accumulate (see box in my office.) - Shawn Maassel



# Stewardship

GIVE...BECAUSE HE FIRST GAVE

God calls us to work in His vineyard using the gifts He has given us all – the time associated with our lives; the talents of knowledge, skills, and abilities to be His hands, feet, eyes, ears, and lips in the world; and our treasure. He calls us to use these gifts generously, trusting Him to replenish them as needed, to serve His church and the world. Please prayerfully consider how God is calling you to serve Him with the gifts He has given you.

## TIME

**Feed the Homeless:** FLC feeds Calvert County's homeless at Project Echo the 2nd Saturday of each month (Feb. 10). Please see signups and recipes at [www.firstlutheranchurch.org/outreach](http://www.firstlutheranchurch.org/outreach).

## TREASURE

You can continue your support of First Lutheran Church by:

1. **On-line:** [firstlutheranchurch.org/donate-now](http://firstlutheranchurch.org/donate-now) (be sure to enter the web address carefully)
2. **Mail:** First Lutheran Church, 6300 Southern Maryland Blvd., Huntingtown, MD 20639
3. **Drop off:** at the Church office, either in the outside mailbox, or in Secretary's mail slot in the church hallway.

*Heal me, O Lord,  
and I shall be healed;  
save me, and I shall  
be saved:  
for you are  
my praise.*

Jeremiah 17:14

Your light will break forth like the dawn, and  
your healing will quickly appear.

-Isaiah 58:8

## Your Treasure Supports the Administration of Ministries

Jesus calls us to be "in the world" not "of the world" (John 15:19). Because we are "in the world" we have obligations to the world—utilities, insurance, mortgage, and other bills - which come due each month so we can worship God, study His word, and care for His people. The tithes and offerings of God's people help pay these bills. In our current fiscal year, the administration budget includes:

- ◆ Licenses for software & equipment; Supplies for bulletins, Sunday School, restrooms, and cleaning: \$18,000
- ◆ Utilities (Electric, Internet, Trash Removal): \$23,000
- ◆ Property Services (Janitorial, Mowing/Snow Removal, Maintenance): \$20,000
- ◆ Property, Liability, and Workman Comp Insurance: \$15,000
- ◆ Mortgage: \$35,000

