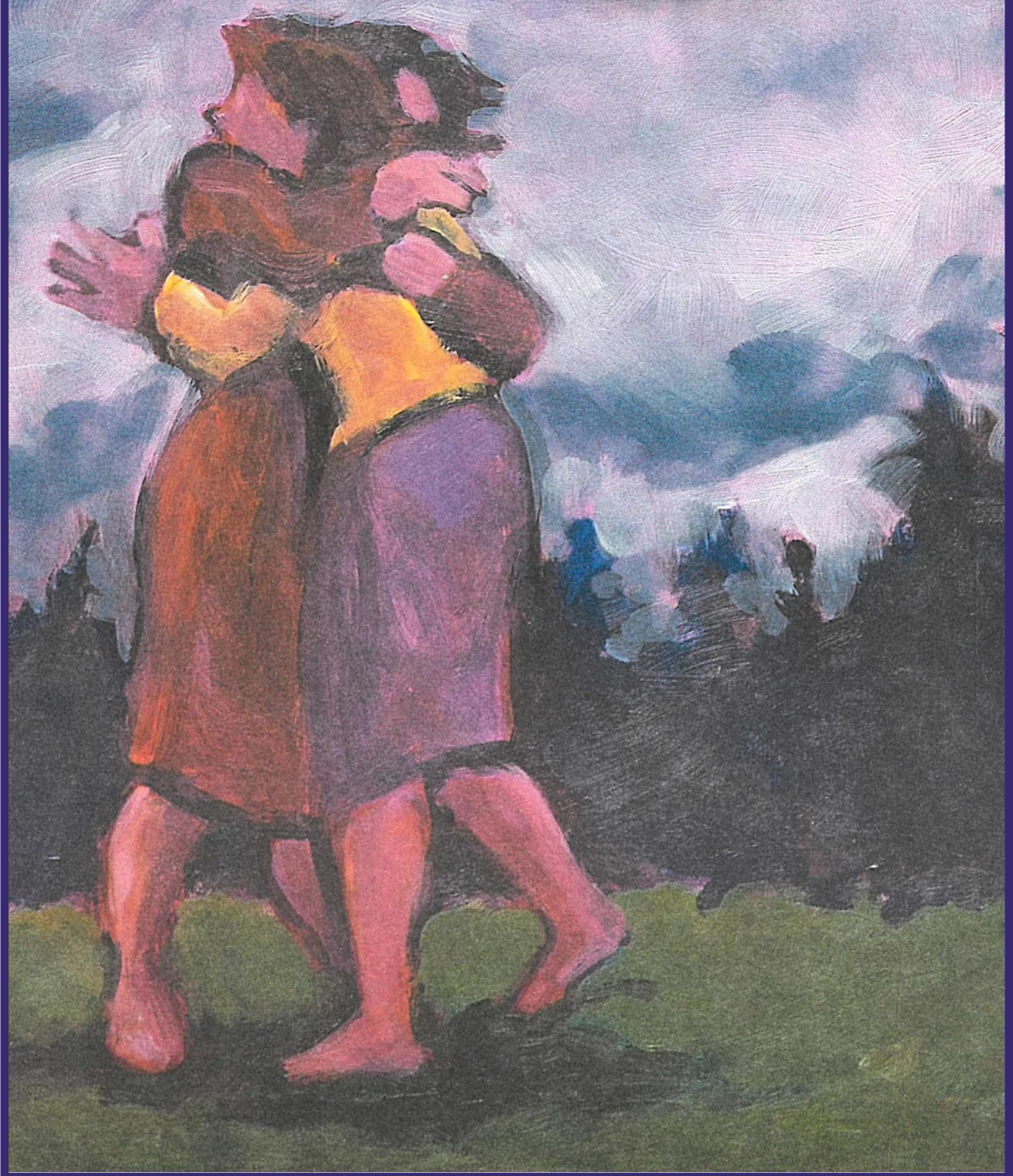


Be reconciled

MATTHEW 5:24





+ Sixth Sunday After The Epiphany +

February 12, 2023

AS WE GATHER

What is the Fifth Commandment? Answer: You shall not murder. You are right. But what does this mean? The disciples needed a little review in today's Gospel. So do we, for its meaning is deeper and more pervasive than we may think. When it comes to matters of the Christian faith and life, we never know it all or remember God's Word consistently. Remember Martin Luther's comment about those who would read the catechism once and then throw it in a corner as if they had already mastered it. Yet he who put it together, though he had advanced academic degrees, knew he needed to study God's Word over and over again. God's Word doesn't change, but we do. New challenges, new situations in life call for new insight and continuous instruction in God's living Word.

The pottery vessels on the altar remind us that although Holy Communion is not celebrated today, our Lord's sacred gifts are still central to our life of faith. Holy Communion is celebrated every 1st, 3rd, and 5th weekend (and major festivals).

Liturgical Color:

Green is the color of life and growth in the Father, Son, and Holy Spirit.

Visitors: We are glad you have chosen to be with us today! We would especially like to follow-up with you beyond today, so please take a moment to leave your best contact information in the guest books at each entrance. A cry-room for parents and children is just off from the front entryway, and there's a wonderful nursery downstairs at the end of the fellowship hall for you to make use of at any time. Do you have any questions about anything here? Don't hesitate to ask one of the ushers or elders, or talk to the pastor.

Prelude

Announcements & Welcome

Please rise

(Prayer request cards will be collected by an usher passing through the aisle)

Gathering Hymn..... "Come, Thou Fount of Every Blessing", #686



1 Come, Thou Fount of ev - 'ry bless - ing, Tune my heart to
 2 Here I raise my Eb - en - e - zer, Hith - er by Thy
 3 Oh, to grace how great a debt - or Dai - ly I'm con -
 4 Oh, that day when freed from sin - ning, I shall see Thy



sing Thy grace; Streams of mer - cy, nev - er ceas - ing,
 help I've come; And I hope, by Thy good plea - sure,
 strained to be; Let that grace now like a fet - ter
 love - ly face; Clothed then in the blood - washed lin - en,



Call for songs of loud - est praise. While the hope of end - less
 Safe - ly to ar - rive at home. Je - sus sought me when a
 Bind my wan-d'ring heart to Thee: Prone to wan - der, Lord, I
 How I'll sing Thy won-drous grace! Come, my Lord, no long - er



glo - ry Fills my heart with joy and love, Teach me
 strang - er, Wan - d'ring from the fold of God; He, to
 feel it; Prone to leave the God I love. Here's my
 tar - ry; Take my ran - som'd soul a - way; Send Thine



ev - er to a - dore Thee; May I still Thy good - ness prove.
 res - cue me from dan - ger, In - ter - posed His pre - cious blood.
 heart, O take and seal it, Seal it for Thy courts a - bove.
 an - gels soon to car - ry Me to realms of end - less day.

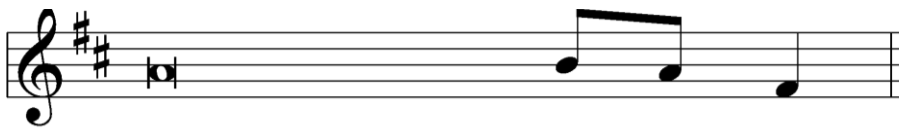
Text and tune: Public domain. Used by permission. LSB License No. 110003555.

Matins

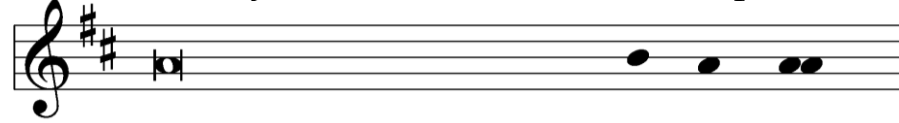
Opening Verses..... page 219



L O Lord, o - pen my lips,



C and my mouth will de - clare Your praise.



L Make haste, O God, to de - liv - er me;



C make haste to help me, O Lord.



C Glo - ry be to the Father and to the Son and to the Holy Spir - it;



as it was in the be - gin - ning, is now, and will be for - ev - er. A - men.



Praise to You, O Christ. Al - le - lu - ia.

Psalmody

Antiphon (*Epiphany*)

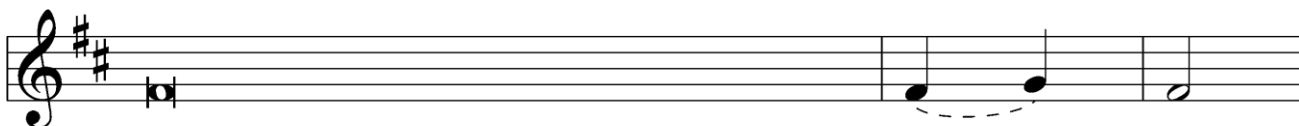


L The Christ has ap - peared to us.

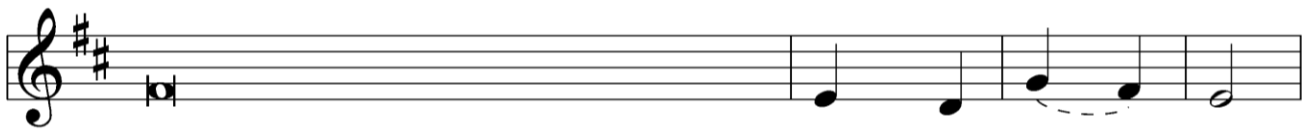


C O come, let us wor - ship Him.

Venite.....pages 220-221

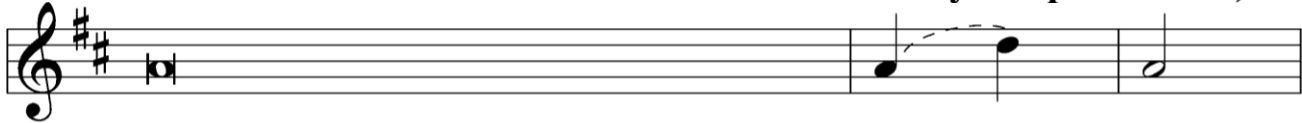


- C** 1 O come, let us sing to the Lord,
- 2 For the Lord is a great God
- 3 The sea is His, for He made it,
- 5 Glory be to the Father and to the Son

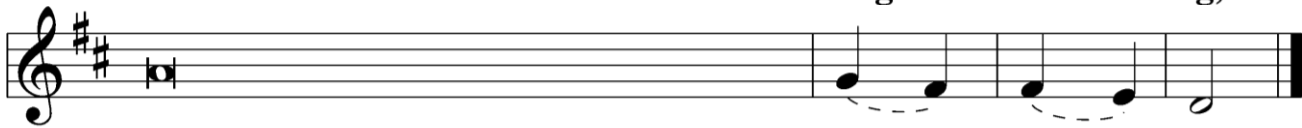


1 let us make a joyful noise to the rock of our sal - va - tion.
 2 and a great king a - bove all gods.
 3 and His hand formed the dry — land.

5 and to the Ho - ly Spir - it;



1 Let us come into His presence with thanks - giv - ing,
 2 The deep places of the earth are in His hand;
 3 O come, let us worship and bow — down,
 4 For He is our God,
 5 as it was in the be - gin - ning,



1 let us make a joyful noise to Him with songs of praise.
 2 the strength of the hills is His — al - so.
 3 let us kneel before the Lord, our mak - er.
 4 and we are the people of His pasture and the sheep — of His hand.
 5 is now, and will be for - ev - er. A - men.

Antiphon (*Epiphany*)



L The Christ has ap - peared to us.



C O come, let us wor - ship Him.

Psalm 119:1-8.....(*front of hymnal, spoken responsively*)

Blessèd are those whose way is blameless,
who walk in the law of the Lord!

Blessèd are those who keep his testimonies,
who seek him with their whole heart,

who also do no wrong,
but walk in his ways!

You have commanded your precepts
to be kept diligently.

Oh that my ways may be steadfast
in keeping your statutes!
 Then I shall not be put to shame,
having my eyes fixed on all your commandments.
 I will praise you with an upright heart,
when I learn your just and righteous decrees.
 I will keep your statutes;
do not utterly forsake me!
Glory be to the Father and to the Son
and to the Holy Spirit;
 as it was in the beginning,
 is now, and will be forever. Amen.

Please be seated

Office Hymn..... *“May We Thy Precepts, Lord, Fulfill”, #698*



1 May we Thy pre - cepts, Lord, ful - fill And do on
 2 So may we join Thy name to bless, Thy grace a -
 3 Spir - it of life, of love and peace, U - nite our



earth our Fa - ther's will As an - gels do a - bove;
 dore, Thy pow'r con - fess, From sin and strife to flee.
 hearts, our joy in - crease, Thy gra - cious help sup - ply.



Still walk in Christ, the liv - ing way, With all Thy
 One is our call - ing, one our name, The end of
 To each of us the bless - ing give In Chris - tian



chil - dren and o - bey The law of Chris - tian love.
 all our hopes the same, A crown of life with Thee.
 fel - low - ship to live, In joy - ful hope to die.

Text and tune: Public domain. Used by permission: LSB Hymn License no. 110003555

Instrumental Music *“Speak, O Lord”*

Readings

Old Testament Reading..... Deuteronomy 30:15-20

“See, I have set before you today life and good, death and evil. If you obey the commandments of the Lord your God that I command you today, by loving the Lord your God, by walking in his ways, and by keeping his commandments and his statutes and his rules, then you shall live and multiply, and the Lord your God will bless you in the land that you are entering to take possession of it. But if your heart turns away, and you will not hear, but are drawn away to worship other gods and serve them, I declare to you today, that you shall surely perish. You shall not live long in the land that you are going over the Jordan to enter and possess. I call heaven and earth to witness against you today, that I have set before you life and death, blessing and curse. Therefore choose life, that you and your offspring may live, loving the Lord your God, obeying his voice and holding fast to him, for he is your life and length of days, that you may dwell in the land that the Lord swore to your fathers, to Abraham, to Isaac, and to Jacob, to give them.”

P O Lord, have mercy on us.

C Thanks be to God.

Epistle Reading 1 Corinthians 3:1-9

But I, brothers, could not address you as spiritual people, but as people of the flesh, as infants in Christ. I fed you with milk, not solid food, for you were not ready for it. And even now you are not yet ready, for you are still of the flesh. For while there is jealousy and strife among you, are you not of the flesh and behaving only in a human way? For when one says, “I follow Paul,” and another, “I follow Apollos,” are you not being merely human?

What then is Apollos? What is Paul? Servants through whom you believed, as the Lord assigned to each. I planted, Apollos watered, but God gave the growth. So neither he who plants nor he who waters is anything, but only God who gives the growth. He who plants and he who waters are one, and each will receive his wages according to his labor. For we are God’s fellow workers. You are God’s field, God’s building.

P O Lord, have mercy on us.

C Thanks be to God.

Please rise

Holy Gospel Matthew 5:21-37

[Jesus said:] “You have heard that it was said to those of old, ‘You shall not murder; and whoever murders will be liable to judgment.’ But I say to you that everyone who is angry with his brother will be liable to judgment; whoever insults his brother will be liable to the council; and whoever says, ‘You fool!’ will be liable to the hell of fire. So if you are offering your gift at the altar and there remember that your brother has something against you, leave your gift there before the altar and go. First be reconciled to your brother, and then come and offer your gift. Come to terms quickly with your accuser while you are going with him to court, lest your accuser hand you over to the judge, and the judge to the guard, and you be put in prison. Truly, I say to you, you will never get out until you have paid the last penny.

“You have heard that it was said, ‘You shall not commit adultery.’ But I say to you that everyone who looks at a woman with lustful intent has already committed adultery with her in his heart. If your right eye causes you to sin, tear it out and throw it away. For it is better that you lose one of your members than that your whole body be thrown into hell. And if your right hand causes you to sin, cut it off and throw it away. For it is better that you lose one of your members than that your whole body go into hell.

“It was also said, ‘Whoever divorces his wife, let him give her a certificate of divorce.’ But I say to you that everyone who divorces his wife, except on the ground of sexual immorality, makes her commit adultery. And whoever marries a divorced woman commits adultery.

“Again you have heard that it was said to those of old, ‘You shall not swear falsely, but shall perform to the Lord what you have sworn.’ But I say to you, Do not take an oath at all, either by heaven, for it is the throne of God, or by the earth, for it is his footstool, or by Jerusalem, for it is the city of the great King. And do not take an oath by your head, for you cannot make one hair white or black. Let what you say be simply ‘Yes’ or ‘No’; anything more than this comes from evil.”

P O Lord, have mercy on us.

C Thanks be to God.

Responsory.....*page 221*



L 1 Forever, O Lord, Your Word is firmly set in the heavens.
 2 Blessed are those who hear the Word of God and keep— it.
 3 Glory be to the Father and to the Son and to the Holy Spir - it.



C Lord, I love the habitation of Your house and the place where Your glo-ry dwells.

Please be seated

Children's Song "Oh, How I Love Jesus"

Children's Message

Sermon..... "Reconciling Love in God's Field & Building"

Canticle

Hymn of Praise..... "My Soul Now Magnifies the Lord", #934



1 My soul now mag - ni - fies the Lord; My spir - it
 2 For He a - lone who shows such might Has done a -
 3 His arm is strong; His strength is great. He scat - ters
 4 He feeds the hun - gry as His own; The wealth - y



leaps for joy in Him. He keeps me in His kind re -
 maz - ing things to me. His mer - cy flows; His name like
 those of proud in - tent And casts them down from high es -
 leave with emp - ty hands. He gives His help to Is - ra -



gard, And I am blest for time to come.
 light Re - mains in light time per - pet - ual - ly.
 taste, Then gives the low His nour - ish - ment.
 el; His gra - cious prom - ise al - ways stands.

Offering & Offertory

Please rise

Apostles' Creed.....*back cover of hymnal*

I believe in God, the Father Almighty,
maker of heaven and earth.
And in Jesus Christ, His only Son, our Lord,
who was conceived by the Holy Spirit,
born of the virgin Mary,
suffered under Pontius Pilate,
was crucified, died and was buried.
He descended into hell.
The third day He rose again from the dead.
He ascended into heaven
and sits at the right hand of God the Father Almighty.
From thence He will come to judge the living and the dead.
I believe in the Holy Spirit,
the holy Christian Church,
the communion of saints,
the forgiveness of sins,
the resurrection of the body,
and the life everlasting. Amen.

Announcement of Prayers

Prayer

Kyrie.....*page 227*



C Lord, have mer-cy; Christ, have mer-cy; Lord, have mer-cy.

Lord's Prayer

Collects.....*page 227-228*



L O Lord, hear my prayer.



And let my cry come to You.

Collect of the Day *(in unison)*

O Lord, graciously hear the prayers of Your people that we who justly suffer the consequence of our sin may be mercifully delivered by Your goodness to the glory of Your name; through Jesus Christ, Your Son, our Lord, who lives and reigns with You and the Holy Spirit, one God, now and forever. Amen.

Additional Collects ending Amen.

Benedicamus.....page 228

Benediction.....page 228

Sending Hymn..... *"Where Charity and Love Prevail", #845*



1 Where char - i - ty and love pre - vail There
2 With grate - ful joy and ho - ly fear His
3 For - give we now each oth - er's faults As
4 Let strife a - mong us be un - known; Let



God is ev - er found; Brought here to - geth - er
char - i - ty we learn; Let us with heart and
we our faults con - fess, And let us love each
all con - ten - tion cease; Be God's the glo - ry



by Christ's love By love are we thus bound.
mind and soul Now love Him in re - turn.
oth - er well In Chris - tian ho - li - ness.
that we seek; Be ours His ho - ly peace.

5 Let us recall that in our midst
Dwells Christ, His only Son;
As members of His body joined
We are in Him made one.

6 For love excludes no race or clan
That names the Savior's name;
His family embraces all
Whose Father is the same.

Dismissal (Bethlehem's Mission)

P Grow in Christ,

C Live in Love and Share the Faith!

Postlude

Matins from Lutheran Service Book. Unless otherwise indicated, Scripture quotations are from the ESV® Bible (The Holy Bible, English Standard Version®), copyright © 2001 by Crossway, a publishing ministry of Good News Publishers. Used by permission. All rights reserved. Created by Lutheran Service Builder © 2023 Concordia Publishing House.

Next week's readings:

OT: Exodus 24:8-18; Epistle: 2 Peter 1:16-21; Gospel: Matthew 17:1-9

Attendance Last Saturday: 30

Total Offering: \$5,393.00

Home Use: \$4,705.00

Attendance Last Sunday: 59

Missions: \$250.00

Benevolences/Non-Offering: \$438.00

Serving us today:

ElderWillie Crespo

MusicianJerrode Marsh, Gary Moege

Altar Committee.....Darlene Laubenstein (Chair), Julie Crespo,
Karon Harding, Georgia Luker, Amy Martin

Flower Committee Penny Humphrey (Chair), Lori Sloan

This Week's Schedule

Today 11:30 a.m. Valentine Fellowship (fellowship hall)

2:30 p.m. Country Club Care Center Service

3:15 p.m. Youth Catechesis

Monday 9:30 a.m. Exercise Class

2:00 p.m. Moms and Tots at the Park

7:00 p.m. Mary Martha Guild Meeting

Tuesday *Pastor at Monthly Circuit Conference*

9:30 a.m. Quilting

7:00 p.m. Church Council Meeting

Wednesday 9:30 a.m. Exercise Class

10:30 a.m. Bible Study

6:30 p.m. Choir Practice

Thursday 9:30 a.m. Pastor at Warrensburg Christian School

11:00 a.m. Lunch Bunch (at the Senior Center)

1:00 p.m. Games and Cards Group

5:30 p.m. Fellowship Board Meeting

Friday	9:30 a.m.	Exercise Class
	4:00 p.m.	Rooted in the Faith Adult Catechesis
Saturday	11:00 a.m.	Trustees' Meeting
	5:30 p.m.	Holy Communion
Sunday	8:00 a.m.	The Lutheran Hour broadcast on 96.9
	9:00 a.m.	Radio Broadcast 98.5 (can also be heard at www.blchurch.com , under the Sermons tab)
	9:15 a.m.	Sunday School/Adult Bible Class
	10:30 a.m.	Holy Communion
	12:00 p.m.	Elders' Meeting

Prayers

For Sustenance, Healing, and Provision—We remember those who are dealing with illness, are homebound or in nursing homes, are undergoing and recovering from surgery, as well as going through hospitalization and rehabilitation: Charlie Becker, Jerry Bell, Mel Bockelman, Paula Brewer, Ray & Mary Carstensen, Bob & Barbara Compton, Marion Droege, Tommy Fatka, Wilma Gertz, Karen Haase, Bret & Valerie Hartwig, Mary Johnson, Wanda Kreisel, Rohn Luker, Neala Ann (Cody Droege's niece), Judy Pierce, Maryanna Savery, Denny Spanton, Rose Steitz, & Joe Zeman.

For Military Members—We remember all service and support personnel who are deployed and stationed away from us and their families: Andy Burden, Ty Carter and Chance Hillsman.

Prayer Requests & Spiritual Care—If you would like to make a prayer request, contact Pr. Joel or email the church office. Also, if you're feeling the strain, feel free to call or text Pr. Joel or contact your elder or the church office. We rely upon the Holy Spirit and his gifts in Christ during every time of uncertainty, and can never be thankful enough for the gift of each other!

Special Days for Members This Week

Birthdays—Ender Hartwig-11th, LauraBeth VanWey-11th, Valerie Hartwig-14th, Ethan Parten-15th, Beryleen Dodson-16th, Mark Steitz-17th, Janet Mudd-19th, Kilian Pederson-19th.

Worship Services

Saturday Services start at 5:30 p.m. Sunday Services are at 10:30 a.m. Sunday's Services are live on Facebook and YouTube and the webpage at blchurch.com.

Sunday School and Christian Education

Wednesday Bible Study—We are reading and discussing our way through the writings of the prophet Zechariah. **Join us in the conference room from 10:30 a.m. to noon** for this biblical journey together!

Sunday Bible Study (9:15-10:10 a.m. in the conference room)—We're using Trevor Sutton's 2018 book *Clearly Christian: Following Jesus in This Age of Confusion* as an inroad to Scripture, the Christian faith, and life. Join us for this discussion and exploration of who Christ is and what believing and living in Him really means!

Sunday School is at 9:15 a.m. on Sunday mornings downstairs for ages Preschool through 12th grade. We invite all children of the congregation (and outside too!) to come and be a part of this time set aside for growing together in Christ.

Vacation Bible School—Mark your calendars for **June 23-25!** Vacation Bible School will give children a chance to dive into *God's Living Water: Covered in Jesus' Grace*. Watch for more details as the date get closer.

Family Discipleship Conference—The Missouri District, as part of its goal to assist congregations in encouraging and equipping faith formation at home, will be hosting a "Tell the Next Generation" family conference called **The Christ-Centered Home on Saturday, March 11 from 9:00 a.m. to 3:00 p.m. at the Lutheran High School of St. Charles.** Families' identities are reflected in what they own, what they talk about, what they do, and where they go—thereby showing who they are and what they love. This conference aims to support families as they create Christ-centered homes and live out of their central identity. To see a list of the presenters and the wide range of topics covered that day, go to www.mo.lcms.org/events. We hope to have at least a few attend from here and bring back what they learned with the congregation. **Let Pr. Joel know by the end of the month if you plan to attend.** Registration is simply the cost of lunch and can be covered by funds Bethlehem has available.

The Lutheran Witness—The February issue of our LCMS denominational magazine reflects on the Lutheran perspective on mental illness and health and how the comfort of Christ can heal people. Current and past issues are always available at both entrances/exits for your taking.

Youth Opportunities

The Jr. and Sr. Youth will be planning their 3rd Sunday event on February 19th. This outing will be a "lock-in" at the Lutheran Campus Center from **5 p.m. to 10 p.m.** We will be having food, games, and fellowship. All Jr/Sr Youth are invited to attend and to bring a friend along to join in the fun.

Music

Choir Practice is held on **Wednesdays from 6:30 p.m.-8:00 p.m.** in the conference room. The first half-hour is dedicated to fellowship, then a full one-hour rehearsal. All previous and **prospective** choir members are invited to attend. Please give this opportunity prayerful consideration to strengthen our church and the unified Body of Christ through songs of faith.

Mary Martha Guild

Mary Martha Guild Meeting will be held on **Monday, February 13 at 7:00 p.m. Roy and Judy Schache** will present the program this evening. Although it is for our meeting, **EVERYONE IS INVITED** to hear the latest update on their work in Papua New Guinea. Please come. You will enjoy it!

Altar Flowers—The Mary-Martha Guild invites you to **donate flowers** to honor a birthday, anniversary or other occasion, or honor the memory of a loved one who has passed away. To do so, there is a poster across from the mailboxes and you can sign up for the specific date you would like. You can also contact Penny Humphrey.

Recycling—Please consider bringing all of your **aluminum cans** to Bethlehem to be recycled! You can place your bags by the shed in the parking lot. Proceeds go to the Lutheran World Relief through the Guild.

Fellowship

Valentine Fellowship—Join us this **Saturday and Sunday services for fellowship time after services.** Stay after and enjoy some tasty treats and drinks, plus worthwhile time visiting with others!

The Lunch Bunch will be meeting on **Thursday, February 16 at 11:00 a.m.** at the **Warrensburg Senior Center.** The menu will be Fried Chicken, Mashed Potatoes with Gravy, Green Beans, Wheat Roll, Peaches or Chocolate Cake. (Baked Chicken Breast or Baked Fish will also be available upon request). A contribution of \$5 is suggested

Exercise Class happens at **9:30 a.m. on Mondays, Wednesdays and Fridays** in the Fellowship Hall. This class is low impact exercise open to anyone, men or women. For more information, contact Judy Smith.

The Games and Card Group meets on **Thursdays at 1:00 p.m.** in the Youth Room downstairs. Anyone, men and women, are welcome to come. If you have any questions, please contact Melvin Theroff.

The Quilting Group meets on the **second and fourth Tuesday of the month from 9:30 a.m. until 2:30 p.m.** (September through May). Anyone is welcome to help with this project. No special sewing skills are needed. Bring your own lunch. If you have

any questions, please contact Georgia Luker.

This & That

2023 Food Shelf Challenge—Bethlehem is working toward collecting **150 food items** (boxes, bags or cans) so that our local Food Center will receive **\$150.00**. Bring your donations and place in the Food Center shopping cart before **March 31**. The Kansas & Missouri Thrivent Member Network has put this challenge out in order to help many food centers around the Kansas and Missouri regions. If we get 150 items they will make the monetary donation.

“Souper” Bowl Drive—The Food Center will be taking monetary donations to purchase soup this year. You can also donate cans of soup by leaving them at the church or taking them to the Food Center on Monday, Wednesday and Friday afternoons. There is a great need right now.

Mark Your Calendars for a Shrove Tuesday Pancake Dinner here on February 21 from 5-7 p.m.! Known to many as Fat Tuesday (or Mardi Gras in French), this day before Ash Wednesday became associated with pancakes because the last of the eggs and fats had to be used up before the Lenten fast from them (until they could be eaten again on Easter Sunday). This will be an open-to-the-community event, with all free-will donations collected going to the Food Center. *You will also learn how this more than 500 year-old tradition began in the same English town where “Amazing Grace” was written 250 years ago this year!* **Spread the word, and if you’d like to help, use the sign-up sheet on the bulletin board by the conference room!**

Thrivent Choice Dollars—Members with 2022 choice dollars available need to designate these funds **before March 31** or they will expire. You may direct your choice dollars to Bethlehem or your choice of another organization on the Thrivent list. Choice Dollars may be designated at Thrivent.com/Thrivent Choice, or by calling 800-847-4836 and when prompted say "Thrivent Choice". This past year Bethlehem Thrivent members used choice dollars to assist with the annual Warrensburg Angel Tree Project and food and supplies for Bethlehem's Vacation Bible School. We also funded several other mission type projects with either Choice Dollars or many Action Team Project Grants from various Thrivent members of Bethlehem. Please contact Larry Haase if you have questions or seek information on how you can be involved with our activities or projects.

Nursery/Cradle Roll—We have an opening for anyone that would like to volunteer to send out information to our new infants and parents. Diana Hoemann has been doing this for quite some time and would like to retire from it. Please contact the office if you are interested.

Thinking Spring & Garden/Trail Groups—As we look toward the return of green growth before too long, consider staking your claim as part of the Garden & Greenspace Group (3G) or Nature Trail Crew! By helping out in this way, you're saying you want to be involved in tending to our wonderful spots of nature here at Bethlehem. **If you didn't make the recent meeting, let Shawn Lindley or Pr. Joel know and we'll add you to the list.** Help us steward this treasure together and grow in gratitude for the Lord's good earth!

Country Kitchen Cards—We have Country Kitchen Cards. Stop by the office if you would like to purchase one. They are \$10 and you get 10 buy-one- get-one free meal deals. All proceeds go to the youth group. Thanks for your support!

Ongoing thanks to those who generously give to the Bethlehem Emergency Fund, which enables Pr. Joel to assist members and certain people in the community who are in crisis situations. Much appreciation for your good support in shining the light of Christ!

Other Events

Trivia Night, Saint Paul Lutheran High School, Concordia. The event will be held on **Saturday, February 18th** in the Gym Annex at SPLHS. Doors open at 6:00pm, trivia begins at 6:30pm. **Cost is \$80 per table** with a maximum of 8 people per table. Cash prizes for 1st and 2nd place, plus team prizes for best costumes/table decorations (choose your own theme). Teams can bring their own snacks and drinks will be available for purchase. To register a team, send name and contact person to CGifford@splhs.org or call 660-463-2238 ext. 266 by Wednesday, February 15th.

Chili-Soup Dinner—St. Matthew Lutheran Church in Ernestville is sponsoring a Chili-Soup Dinner on **Sunday, February 19 from 11:00 a.m. to 1:00 p.m.** Proceeds will be used for the St. Paul's Elementary School Tuition Program.

The Katy Trail medical mobile unit will be in Warrensburg each **Tuesday from 9am-3pm**. If you know someone that has medical needs and would benefit from affordable or free healthcare with prescription help please pass on this information. The unit is located behind the food pantry at **137 E. Culton Street Warrensburg.** First Presbyterian Church is also hosting a **free lunch** on Tuesdays to coincide with the mobile unit, and that might include involvement from other congregations. **The lunch will be from 11:30am-1pm.** All are welcome. Most insurances are accepted. **Call 877-733-5824 to schedule an appointment.**

2023 Elders

Willie Crespo (last name begins A-F) 660-679-8121, crespo6fam@gmail.com

Ricky Bertels (last name begins G-K), 660-262-8080, rick1janice2@gmail.com

Jack Easterwood (last name begins L-O) 660-678-2045, easter.egg2380@gmail.com

Alan Miller (last name begins P-Z) 660-909-1764, alormiller@aol.com

Offering Envelopes have arrived—You will find your envelopes in your mailbox. There will be envelopes for each Sunday of the year as well as 4-Designated offering envelopes and 2-Mission envelopes. The envelopes for other special services (i.e. Ash Wednesday) will be located in the pews and at each entrance of the church closer to that date. If you did not get envelopes and would like a box, please email contact the office. **Please do not use last year's envelopes—all envelopes have been renumbered.**

SHROVE TUESDAY PANCAKE DINNER

Tuesday, February 21

5-7 p.m.



You will also learn how this more than 500 year-old tradition began in the English town of Olney where *Amazing Grace* was written 250 years ago this year. . . and have a chance to sing it & another Olney hymn or two.

Free-will donations will be accepted for the Food Center

Bethlehem Lutheran Church
607 N. Maguire, Warrensburg

Contact Information

Bethlehem Lutheran Church, 607 N. Maguire, Warrensburg, MO 64093

Our Mission

· Grow in Christ · Live in Love · Share the Faith

Our Vision

To be a community of believers, disciples, and servants while we deepen our personal faith and reach others for Christ.



Rev. Joel R. Kurz

Tuesday & Thursday: 8am–5pm, Wednesday & Friday: 10am-5pm

Otherwise by appointment

Office: 660-747-6742

Cell Phone: 660-441-5710

Email: pastor@blchurch.com

Website: www.blchurch.com Facebook: [blcwarrensburg](https://www.facebook.com/blcwarrensburg)

Office Manager:

Cindy Smith

Monday–Friday: 8am-5pm

660-747-6742

officemanager@blchurch.com

Bookkeeper:

Teresa Hillsman

Tuesday: 9am-11am

Thursday: 9am-11am

financial@blchurch.com

Please note that Bethlehem Lutheran Church has a closed-circuit video system. This allows for live streaming on the web, viewing of the service on screens in the building and helps to enhance our security. Please see a trustee or an elder if you have any questions.