



TIGER TALES

"Connected to Christ"



Please join us for Holy Week Worship Services:

Palm Sunday –

March 24th Divine Service at 9:00 a.m.

Maundy Thursday –

March 28th Divine Service at 7:00 p.m.

Good Friday –

March 29th Divine Service at 7:00 p.m.

Easter Sunday –

March 31st Sunrise Divine Service at 6:30 a.m.

Easter Breakfast at 7:30 a.m.

Easter Day Divine Service at 9:00 a.m.



Christ
THE LORD
is Risen

CALENDAR

March 8 End of 3rd Quarter
March 10 Daylight Savings
March 15 Report Cards Sent Home
March 15 Science Fair
March 18 PTL Meeting
March 19 Board of Ed Meet
March 20 Kindergarten Roundup
March 21 Birthday Pizza Lunch
March 22-29 Spring Break
April 1 No School-Easter Monday

MARCH 2024

Sun	Mon	Tue	Wed	Thu	Fri	Sat
					1	2
3	4	5	6	7	8	9
10	11	12	13	14	15	16
17	18	19	20	21	22	23
24	25	26	27	28	29	30

BIRTHDAYS

March 2 Bryce Hapner
March 3 Lucas Werling
March 20 Mrs. DeFrain
March 22 Vinny Fuhrmann



As a parent, you probably know that keeping your kids from spending all day (and night!) on their devices can be a challenge, and you're not alone. But finding a quick and easy way to manage screen time and filter the web doesn't have to be mission impossible — or cost an arm and a leg.

Bethlehem has partnered with Bark to offer our families a **free Bark Jr subscription (\$60/year value)** for life!

Use the URL below to activate your free Bark Jr account:

<https://www.bark.us/bark-jr/signup?ref=JFK944B>

What am I getting with a free Bark Jr account?

- Ability to manage screen time on mobile devices
- Set different rules for school time and bedtime
- Filter which websites your kids can visit
- Keep up with kids with location check-ins



What is Bark?

In addition to screen time, Bark can help parents proactively monitor text messages, YouTube, emails, and 30+ different social networks for potential safety concerns, so busy parents can save time and gain peace of mind. Bark currently helps protect over 5.6 million kids in the US.

Thank you

Bethlehem Lutheran School

With Gradelink you can stay updated on your child's academic progress at school and get information on upcoming assignments such as assignment descriptions and due dates. Login information is available from your child's teacher or from the school office.

The following information is available to you when you **log in to Gradelink**:

- Current Grade in each class
- Current GPA for the term, if applicable
- Descriptions, Grades, and Teacher Comments for graded assignments
- Descriptions and Due Dates for upcoming assignments
- Assignment handouts or documents (attachments)
- Email Alerts you can configure for grades and attendance
- Attendance Information
- Transcript Information, if applicable
- Billing Information, if applicable



To access this information go to www.gradelink.com and click on the green Log In button.

PLEASE CALL THE SCHOOL OFFICE IF YOU NEED ANY HELP

This is the student portal Mr. Meyer maintains that gives the students quick access to a lot of our programs. Parents may also access this site to see what is going on in grades 3 - 8 grades. <https://sites.google.com/bethlsossian.org/bethlehemstudentportal/home>

PRIVACY NOTICE

We all love to share pictures of our child's school activities and accomplishments. However, we have to be very careful where those pictures are posted and respect that other students might also be in the picture. Parents please remember to respect do not post pictures that may have students in them other than your own child. If you have any questions or concerns, please contact the school office before posting anything. Thank you

Principal's Message

The Cross is our Tree of Life

The Lord is into living things, growing things, “vegetation, plants yielding seed, and trees bearing fruit in which is their seed” (Gen. 1:12). It’s really no surprise that He was once mistaken for a gardener (John 20:15). In His teaching, Jesus talks about sowing seeds, pulling weeds, planting vineyards, and tending vines. Our theme this year, Connected to Christ, reminds us that Jesus is the Vine and we are the branches (John 15:5). So also, the first home God made for man was a garden (Gen. 2:8). And in that first garden, there were two trees: the Tree of Life and the Tree of Knowledge. We all know what happened: Adam and Eve listened to the devil and disobeyed God by eating fruit from the Tree of Knowledge and so they are barred from eating fruit from the Tree of Life. But did you know about the Other Tree of Life? It looks like a tree of death: bare, dead wood, and instead of beautiful fruit hanging from its limbs, there’s a bloody corpse. This tree is the cross of Jesus our Lord, “who accomplished the salvation of mankind by the tree of the cross that, where death arose, there life also might rise again and that the serpent who overcame by the tree of the garden might likewise by the tree of the cross be overcome.” The devil used a tree to bring the fruit of sin and death into the world. But Jesus used the tree of the cross to bring the fruit of forgiveness and life into the world. “And of this fruit so pure and sweet the Lord invites the world to eat, to find within this cross of wood the tree of life with every good” (LSB 561:4).

Weather permitting the students will be going outside for recess time. Please have your child dress appropriately for the weather.



Potential delays and cancellations for Bethlehem will follow the same as Norwell Community Schools.

A reminder that Bethlehem will NOT be following the Northern Wells Community Schools 2 hour delay on Wednesday, March 13th. Therefore, unless a weather related delay or closing comes along, Bethlehem will operate on a regular schedule. Morning bus service will NOT be provided. The 7-8th grade students will be excused from their NW morning classes and are asked to be at Bethlehem by 9:15 am. Please contact the school office if you have any questions.

NO SCHOOL—Bethlehem will be closed March 22-29 for Spring Break

NO SCHOOL— Bethlehem will be closed April 1 for Easter Monday

E-learning packets will be used this year for weather related closures.

An email or text message will be sent on the day of closure to indicate an E-learning day.

Bethlehem families who shop at Kroger are encouraged to Sign up today! Shop at Kroger and help the Bethlehem Lutheran School tuition assistance fund with the **Kroger Community Rewards Program**.

Register online at krogercommunityrewards.com, be sure to have your Kroger Plus card handy and register your card with Bethlehem Lutheran School as your organization for the reward. **The NPO number for Bethlehem is WG595#.**

If you don't have a Kroger Plus card, they are available at the customer service desk.

Members must swipe their registered Kroger Plus card or use the phone number that is related to their registered card when shopping for each purchase to count.

PLAN TO USE SCRIP FOR ALL YOUR HOLIDAY SHOPPING

Everyone is encouraged to use the online "ShopwithScrip" app to buy and reload gift cards for faster turn around. Create an account on RaiseRight.com and enter our Bethlehem enrollment code:

43ALE7851441. Or for physical orders, contact our Scrip coordinator, Melissa Price at 260-433-5307. Over the years, we have been able to financially support the church general fund and participating school families who have applied credits toward their child's tuition. Thank you for your support.



Help our 7th and 8th graders raise funds for their Washington D.C. class trip!

Please save your newspapers, catalogs, magazines, junk mail, old phone books, office/school papers and hard/soft cover books. Along with cereal type boxes (NO CARDBOARD). Bring your recyclable paper to school and dispose of in our "PaperGator."

The recycling company pays by the ton so the more you feed our Gator, the more funds we can collect!

If you need help with pick up for large amounts, please call the school and we will make arrangements to help you.

Let your family, neighbors, and friends know!

Thank you



Third Quarter Chapel Mission Project

During the 3rd quarter (Jan. 8-Mar. 8)

The LCMS Ministry to the Armed Forces supports all LCMS chaplains who serve on active duty, in the reserves, the National Guard, Civil Air Patrol, and Coast Guard Auxiliary. LCMS chaplains deliver Word and Sacrament ministry to our military personnel and their families.

The LCMS cares deeply for those who currently serve, for those who have donned the cloth of our nation in uniform, and for those who served our nation and live in our communities.

For the 4th quarter of this school year, we will be collecting items and monies for LCMS Disaster relief by building "Flood Buckets" Please see flyer for more information. More details will be coming home soon. Thank you for all your support.



February / March Birthday Pizza lunch
with Pastor Dodgers

Thursday, March 21st

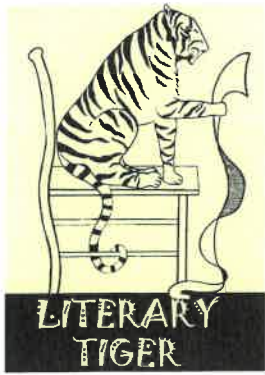
Students celebrating birthdays are:

Owen Book Alejandro, Madeline Schumm, Jon Fuhrmann,
Bryce Hapner, Lucas Werling, Vinny Fuhrmann

Donations for New Library Bookshelves - Library Improvement Phase II

Once again, thank you to everyone who contributed to Phase I of our room swap for the Library and Kindergarten. It was a great success! We are now beginning to raise money for Phase II, which will improve our library with new bookshelves. These will be wooden bookshelves, handmade by a member of our church. This project will also create more space for books, with shelves for all three walls of the new library, which will add room for our collection to grow. Please consider making a donation to this beautiful and useful project. Make checks out to Bethlehem Lutheran School and include a memo: Library Phase II.

Please join us on March 18th at 6:00 p.m. A special representative with the Lutheran Scholarship Granting Organization will be speaking at our rescheduled PTL meeting. Information will be presented on how to become a donor and get a State Tax credit along with how to achieve a scholarship towards school tuition.

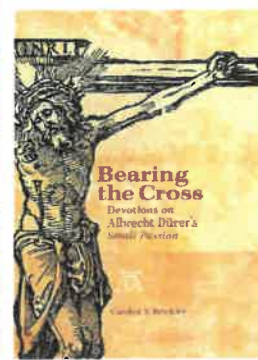
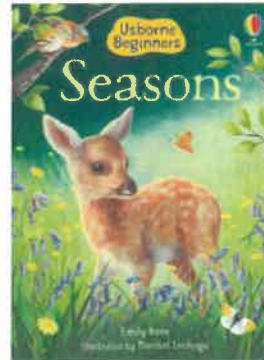
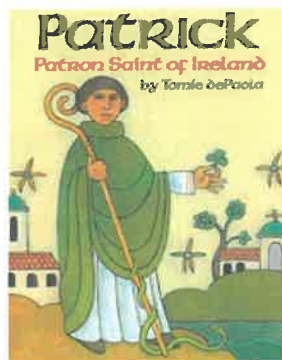
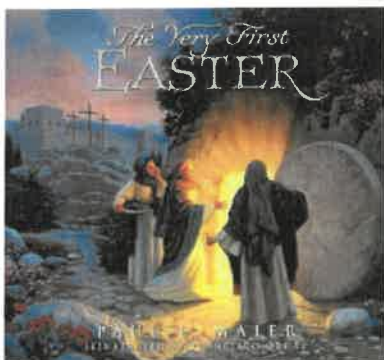


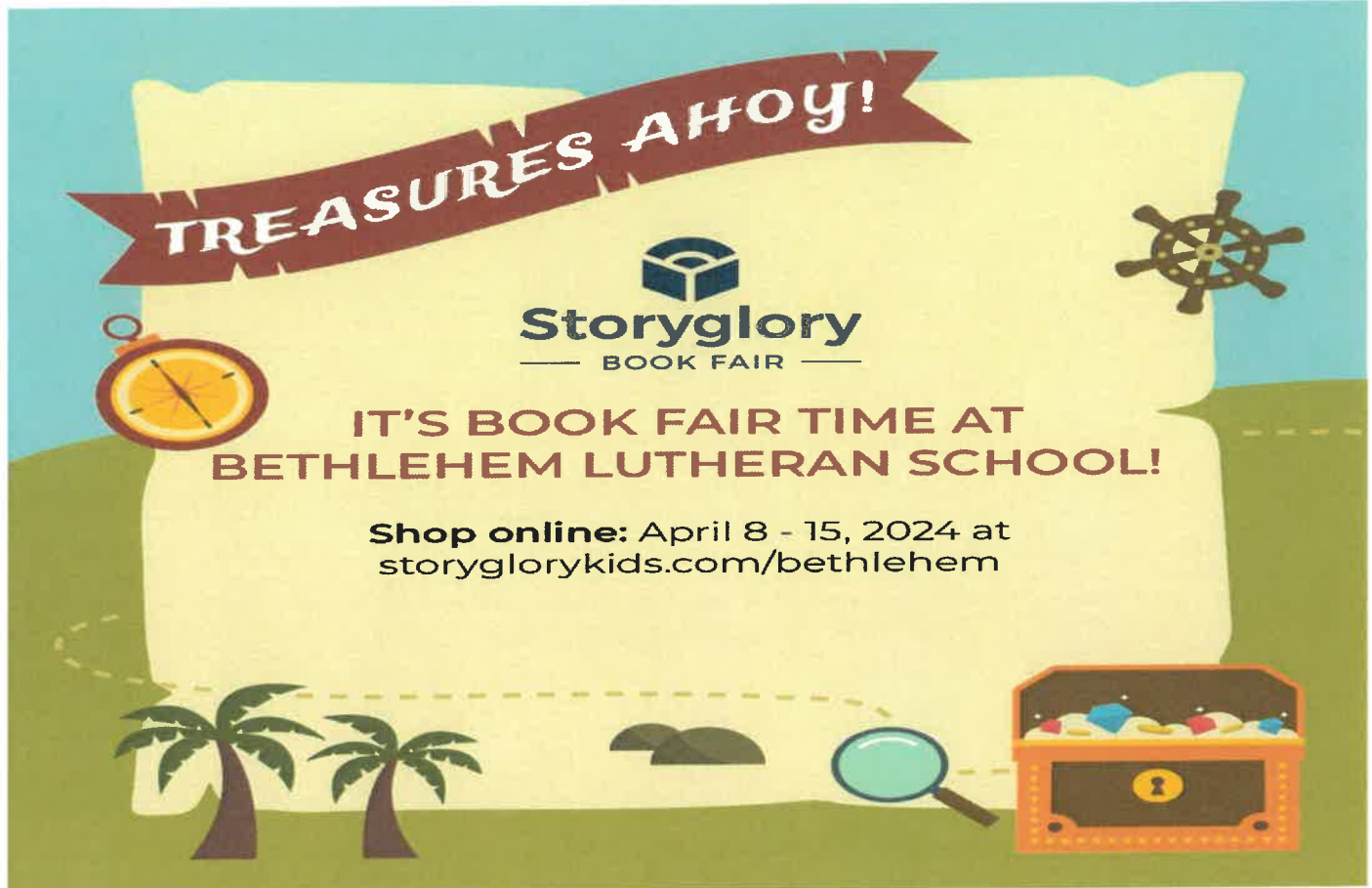
We are pleased to share many new additions to our Bible Story and Lutheran Resources collection. These books were donated in honor of our Bethlehem church workers. Thank you to the church members who donated during Church Worker Appreciation Month last year!

It is especially appropriate to have these resources available as the church continues to observe the season of Lent. The "Follow and Do" collection pairs nicely with the Lenten devotion booklet the students helped to illustrate. These books include catechism memory work, sweet illustrations, and simple explanations for young readers. Bible story books with simplified language for almost every reading level can help even early readers build a habit of regular scripture or devotion reading, on their own or with their families. We also have resources for older students, including "Bearing the Cross: Devotions on Albrecht Durer's Small Passion" written by Bethlehem member Deaconess Brinkley, which is especially appropriate to enjoy as we approach Holy Week.



March also brings us St. Patrick's Day, the first day of spring, and Easter. Your school library has books for all of these occasions!





We are also getting excited for our spring book fair, coming in April! Watch for more details coming soon!

Coming Soon:

Creative Arts Dance Company Spring Showcase

Featuring Excerpts from the ballet "Sleeping Beauty"

Friday, April 26 and Saturday, April 27

Tigers in the Cast: Jonah Bultemeier, Annabelle Furhmann, Alex Furhmann, Emma Wirgau, Gianna Wirgau, Jude Wirgau

Look for more details coming next month!



Students are working on science experiments and research projects. Through science, we observe and study God's creation and how it works. Come to the Science Fair on March 15 to see what our students have discovered!





We saw a lot of improvement from the first day of practice to the last game of the season. We are thankful to all the players that played the entire season. We might not have won a game this year, but we improved a lot as a team. I am thankful for the coaches that volunteered to help the team. Isaac, Natalie, and Ben. To the boys: continue to work on your basketball skills. There are summer basketball camps at Norwell and Squires that help improve your basketball skills. Thank you for allowing me to work with your children. We look forward to seeing everyone return and seeing some new player's next season. Good luck Jacob and congratulations on your upcoming graduation. Thank you, parents, for getting your children to the games and practices.
Coach Don Bales



SCHOOL
SPIRIT



FLOOD BUCKETS

The LCMS Disaster Response flood relief project engages LCMS congregations, districts and other groups in an outreach ministry to provide pre-assembled flood relief buckets to flood and hurricane survivors as part of a disaster preparedness plan.

The project calls for flood relief buckets to be assembled by LCMS congregations, districts and groups and then shipped across the United States for easy distribution following a disaster. Local congregations in the disaster-affected areas serve as the key distribution point in their communities with a special focus on those who may be homebound or otherwise unable to provide for themselves.

As part of the project, each congregation, district or group fills empty 5-gallon buckets with items from a suggested list provided by LCMS Disaster Response. The items are purchased locally and/or donated by the members of the congregation or group.

The total cost of preparing a flood relief bucket is \$25-\$30 including the cost of the 5-gallon container and lid. The cost of the suggested cleaning items range between \$15 and \$25, depending on the quality and quantity of the items purchased, including the optional broom and mop.

How to prepare flood relief buckets

Each flood relief bucket contains:

- › Devotionals
- › Cleaning tips
- › Paper towels
- › Disposable rags
- › Glass cleaner
- › Cleansing powder
- › Liquid cleaner
- › Bleach (1-gallon size)
- › Scrub brush
- › Two pairs of rubber gloves
- › Sponge(s)
- › (Optional) broom and/or mop



Cleaning supplies and 5-gallon containers may be purchased locally.

The flood relief project is intended to be a congregation activity hosted by various groups such as the youth group, a Bible study group, men's or women's group, Lutheran Women's Missionary League or Lutheran Laymen's League group, etc.

The project is coordinated on a district level by LCMS District Disaster Response Coordinators and District Disaster Response Teams.

For additional information, logo decals and devotional materials, please contact LCMS Disaster Response at 888-THE LCMS (843-5267) or lcms.org/disaster.



February 22, 2024

Bethlehem Lutheran School
7545 N 650 E
Ossian, IN 46777



Dear Students and Staff of Bethlehem Lutheran School,

Thank you so much for the \$216.80 gift given to the Northern Wells Food Pantry. Thank you also for all the food! The work your 3rd and 4th graders did was outstanding! We help around 30 families each month with the amount of people increasing. Because of your donations, these families are blessed in the Name of Jesus Christ. Thank you for being the arms of God to these families.

No goods or services have been provided in exchange for your donation. We appreciate your support of our ministry.

Thank you for your contribution.

*Thanks again!
Betty*

Betty Maloney, Secretary on behalf of
Northern Wells Food Pantry, Inc.



TURN SHOPPING INTO EARNING



EARN
\$1,000+
per year

Experience the right way to fundraise

Gift card fundraising is the best way to raise money. Buy gift cards from your favorite brands to earn on your daily purchases. It's never been easier to create opportunities for what matters most to you. No extra money spent. No extra time wasted.

How it works



You buy a gift card

You get the full value.



The brand gives back

No extra money comes
out of your pocket.



Your organization earns

Impacting what
matters most to you.

Shop 750+ popular brands

Getting your morning coffee. Doing DIY projects around the house.
Ordering takeout. Conveniently raise money by doing everyday things.



amazon



STARBUCKS®



"It's super convenient. All I need to go shopping is my phone—I don't even need credit cards or my purse. I'm going to pay for these things anyway, I love being able to use gift cards so we get something in return."

Jen H., earns for hockey

Get started by downloading the [RaiseRight™ app](#) on your phone or go to [RaiseRight.com](#) on your computer.

For step-by-step instructions, visit [RaiseRight.com/m/StartEarning](#).

Enter our organizations enrollment code: 43ALE7851441

Link your bank account to enroll in online payments and place your first order.

For questions, contact our coordinator: Melissa Price at 260-433-5307



The merchants represented are not sponsors or otherwise affiliated with RaiseRight™. The logos and other identifying marks used are trademarks of and owned by each represented company and/or its affiliates. Please visit the company's website for additional terms and conditions. © 2024 RaiseRight



Shop & earn options to fit your lifestyle

Make fundraising part of your everyday life with gift cards purchased through RaiseRight.



Multiple card types

eGift cards

Digital gift cards delivered electronically within seconds.

Physical gift cards

Plastic or paper-based gift cards that can be shipped to your organization or direct to your home.

Reloadable gift cards

Allows you to automatically reload funds onto physical gift cards purchased through RaiseRight.



Safe & secure payment options

Add your bank account or pay with a debit or credit card to enjoy the on-demand convenience of online payments.

Get eGift cards delivered immediately

Access exclusive benefits like ship to home delivery

Earn 4x more than people who don't pay online

Convenience fees apply based on payment method.



Earning on-the-go

The RaiseRight mobile app puts earning at your fingertips—in the checkout lane, at the gas pump, out to dinner, or even from the comfort of your couch.

Shop and buy gift cards

View earnings

Access and use your gift cards

Download the free RaiseRight mobile app for iOS or Android.



Ship to home delivery feature

Get your gift cards delivered right to your door.

250+ brand options—perfect for self-use and gifting

Available from the mobile app and on RaiseRight.com

Look for brands labeled as "Ship to home eligible"

Shipping fees apply.

Start earning with gift cards. Learn more at [RaiseRight.com](https://www.RaiseRight.com)



The merchants represented are not sponsors or otherwise affiliated with RaiseRight. The logos and other identifying marks used are trademarks of and owned by each represented company and/or its affiliates. Please visit the company's website for additional terms and conditions. © 2024 RaiseRight

News Notes to Parents

March 2024

Make the Most of Mealtime



Sitting down together for a meal is a great way to connect with your family. Keeping it relaxed is key to making sure you're getting the most out of this time together, including talking, laughing and choosing healthy foods. Here are some tips to make meals more relaxed in your home:

- **Remove distractions.** Turn off the TV and put away phones and tablets, so your attention is on each other.
- **Talk to each other.** Talk about your day—for example, what made you laugh or what you did for fun. Other conversation starters include:
 - Give each family member the spotlight to share his or her highlight, lowlight, and “funnylight” from the day or week.
 - If our family lived in a zoo, what animals would we be and why?
 - If you could have one super power, what would it be and why?
 - If you were stranded on a deserted island and could have only one food to eat, what would it be and why?

- **Pass on traditions.** Tell your kids about the “good old days” such as foods Grandma made that you loved to eat.
- **Let kids make choices.** Set a table with healthy food and let everyone, including the kids, make choices about what they want and how much to eat.
- **Let everyone help.** Kids learn by doing. Your little one might get the napkins while older kids can help



with fixing foods and cleanup.

- **Make-your-own dishes** like tacos, mini pizzas and yogurt desserts get everyone involved in mealtime.
- **On nice days, opt for a change of scenery.** For example, go to a nearby park for a dinner picnic.

Source: <https://eatgathergo.org/gather/making-the-most-of-mealtime/>

Avoid the Big Splurge: Making the Most of Your Tax Refund

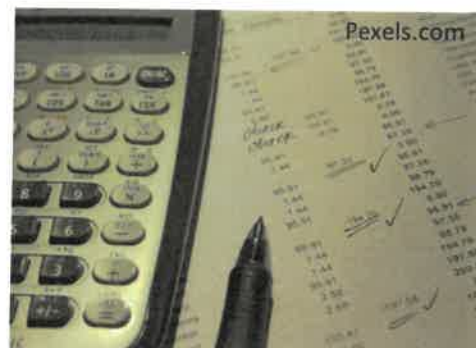
Each year at this time, many consumers receive the largest lump sum payment they will see all year – their income tax refund. This seems like it should be a “golden moment” to save. But for many people, making ends meet throughout the year is tough, and the tradeoff between saving versus other uses for the money can be difficult. This year, if any tax return money is left over, consumers should consider using a portion of it to build an emergency fund to cushion them against financial difficulties, or to start a nest egg.

A recent study by the Corporation for Enterprise Development showed that 44 percent of American households do not have enough savings to cover their expenses for three months if they lose their source of income, and 17 percent have no savings whatsoever. Saving even a portion of a tax refund can help consumers get through times of financial uncertainty. Last year, 73 percent of households received a refund that averaged \$2,953.

At the Consumer Financial Protection Bureau (CFPB), our mission is to protect and empower consumers, which

includes helping people strengthen their financial independence.

Helping people save is core to that mission. That is why we encourage consumers to make the most of their tax refund by taking a few simple steps.



Tax season is a unique opportunity for consumers to make the most of their tax refund, by building savings and preparing for future expenses. We encourage everyone to seize this “golden moment” to save now, and breathe easier later.

Learn more about using tax time to save at [/tax-time-saving/](#) Richard Cordray (2016) is the Director of the [Consumer Financial Protection Bureau](#).

Breakfast Burrito

Ingredients:

2 slices of bacon
1 tortilla
1 tomato
4 small mushrooms
spinach
cheese
2 eggs



Image by Kamran Aydinov on Freepik

Before you begin, wash your hands.

Directions:

1. Wash and cut tomato and mushrooms. Crack 2 eggs into a bowl and stir. Mix in tomato and mushrooms
2. Turn stove to medium. Place pan on stove with bacon. Warm tortilla in microwave (1 minute). Flip bacon until crispy on both sides. Place bacon on tortilla.
3. Pour egg mix onto pan. Stir egg mix continuously. Add cheese.
4. Place egg mix on top of bacon. Put spinach on top. Fold bottom of tortilla towards middle. Fold both sides into the middle. Enjoy.

Source: Accessible Chef

If you have comments or questions, contact:

1240 4-H Park Road, Bluffton, IN 46714

Website: www.extension.purdue.edu/wells

Molly Hoag, Purdue Extension—HHS Educator

Email: mhoag@purdue.edu

Phone: 260-824-6412

It is the policy of the Purdue University Cooperative Extension Service that all persons have equal opportunity and access to its educational programs, services, activities and facilities without regard to race, religion, color, sex, age, national origin or ancestry, marital status, parental status, sexual orientation, disability or status as a veteran. Purdue University is an Affirmative Action institution. This material may be available in alternative formats.

Kindergarten Round Up and Open House

**Come and experience
the Bethlehem
difference! See how we
still embrace the basic
fundamentals of
education in a small
classroom setting!**



**Our Mission
Statement:
Embracing,
Nurturing, and
Equipping
Christ's
Children for Life.**



BETHLEHEM LUTHERAN SCHOOL KINDERGARTEN ROUND UP AND OPEN HOUSE

If you have a student or know of a
student who will be attending
Kindergarten next year, please join us

**Wednesday, March 20, 2024
4:00-6:00 p.m.**

Kindergarten students must be age 5 by
August 1, 2024

All students entering K-8 and their families
interested in our school are also welcomed
to come for a tour at this time!

Appointments are also available for a
private tour.

For more information, please contact us

Bethlehem Lutheran School

7545 N 650 E

Ossian, IN 46777

(260) 597-7366

bethlehemossiansec@gmail.com

www.bethlehemossian.org





Bethlehem Lutheran School

Lunch Menu

March 2024



Sun	Mon	Tue	Wed	Thu	Fri	Sat
	3 4 Chicken Nuggets Fresh Veggies Tater Tots Pears Soft Pretzel	5 Nachos w/meat and cheese Salsa Fresh Veggies Strawberry Cup Cookie	6 Cheeseburger Baked Beans Fresh Veggies Applesauce	7 French Toast Sticks Sausage Hash Brown Patty Veggie Choice Juice	1 Cheese Quesadilla Salsa Refried Beans Fruit Choice	2
	10 11 Hot Dog French Fries Fresh Veggies Peaches	12 Popcorn Chicken Cucumber Slices Green Beans Fruit Choice Biscuit Stick	13 Walking Taco Salad Refried Beans Mixed Fruit	14 Chicken Patty Carrots Apple Slices Rice Krispie Treat	15 Calzone Marinara Sauce Broccoli Fruit Choice	16
	17 18 Pancakes Sausage Hash Brown Patty Veggie Choice Juice	19 Chicken Tenders Baked Beans Mixed Fruit Dinner Roll	20 Bosco Sticks Marinara Sauce Broccoli Applesauce	21 Turkey & Cheese Sandwich Fresh Veggies Chips Sidekick	22 NO SCHOOL Spring Break	23
24 Palm Sunday	25	26	27	28 Maundy Thursday	29 Good Friday	30
31 Easter Sunday	1 NO SCHOOL Easter Monday					