



TIGER TALES

"Connected to Christ"



Welcome Back to School 2023-2024

CALENDAR

Sept. 4 Labor Day—No School
 Sept. 8 Mrs. Streeks last day
 Sept. 13 School Pictures
 Sept. 16 Ossian Days Parade
 Sept. 21 Principal Pizza Lunch
 Sept. 28 Board of Ed Meeting

SEPTEMBER 2023

Sun	Mon	Tue	Wed	Thu	Fri	Sat
					1	2
3	4	5	6	7	8	9
10	11	12	13	14	15	16
17	18	19	20	21	22	23
24	25	26	27	28	29	30

SEPTEMBER BIRTHDAYS

Sept. 1 Mrs. Phillips
 Sept. 7 Vincent Schumm
 Sept. 10 Ivan Bales
 Sept. 12 JT Holtzclaw
 Sept. 13 Clyde Holtzclaw
 Sept. 16 Aralee Price
 Sept. 19 Caleb Rekeweg



As a parent, you probably know that keeping your kids from spending all day (and night!) on their devices can be a challenge, and you're not alone. But finding a quick and easy way to manage screen time and filter the web doesn't have to be mission impossible — or cost an arm and a leg.

Bethlehem has partnered with Bark to offer our families a **free Bark Jr subscription (\$60/year value)** for life!

Use the URL below to activate your free Bark Jr account:

<https://www.bark.us/bark-jr/signup?ref=JFK944B>

What am I getting with a free Bark Jr account?

- Ability to manage screen time on mobile devices
- Set different rules for school time and bedtime
- Filter which websites your kids can visit
- Keep up with kids with location check-ins



What is Bark?

In addition to screen time, Bark can help parents proactively monitor text messages, YouTube, emails, and 30+ different social networks for potential safety concerns, so busy parents can save time and gain peace of mind. Bark currently helps protect over 5.6 million kids in the US.

Thank you

Bethlehem Lutheran School

With Gradelink you can stay updated on your child's academic progress at school and get information on upcoming assignments such as assignment descriptions and due dates. Login information is available from your child's teacher or from the school office.

The following information is available to you when you **log in to Gradelink**:

- Current Grade in each class
- Current GPA for the term, if applicable
- Descriptions, Grades, and Teacher Comments for graded assignments
- Descriptions and Due Dates for upcoming assignments
- Assignment handouts or documents (attachments)
- Email Alerts you can configure for grades and attendance
- Attendance Information
- Transcript Information, if applicable
- Billing Information, if applicable



To access this information go to **www.gradelink.com** and click on the green Log In button.

PLEASE CALL THE SCHOOL OFFICE IF YOU NEED ANY HELP

This is the student portal Mr. Meyer maintains that gives the students quick access to a lot of our programs. Parents may also access this site to see what is going on in grades 3 - 8 grades. <https://sites.google.com/bethlsossian.org/bethlehemstudentportal/home>

PRIVACY NOTICE

We all love to share pictures of our child's school activities and accomplishments. However, we have to be very careful where those pictures are posted and respect that other students might also be in the picture. Parents please remember to respect do not post pictures that may have students in them other than your own child. If you have any questions or concerns, please contact the school office before posting anything. Thank you



Bethlehem Lutheran School had 22 students who successfully completed the 2023 Summer Reading Program.

Congratulations to: Ellie Bales, Ivan Bales, Makayla Berkey, Emma Campbell, Gabriella Campbell, Alex Fuhrmann, Anna Fuhrmann, Jon Fuhrmann, Vinny Fuhrmann, Kyndal Fuller, Savannah Fuller, Lacey Garwick, Anna Haiflich, Caroline Haiflich, Lucas Haiflich, Hunter Householder, Aralee Price, Matthew Rekeweg, Vincent Schumm, Madeline Schumm, Sienna Sommer, Emma Wirgau, Gianna Wirgau, Jude Wirgau, Sarena Wirgau

SGO for tuition assistance

If you have not done so already, Scholarship Granting Organization (SGO) application forms need to be turned into the school office by **Friday, September 15th**. Forms are available from the school office or by downloading at www.lutheransgo.org. Proof of income and household size will need to be included, such as your 2022 federal tax return showing Adjusted Gross Income and Household size. Please contact the school office if you have any questions.

This scholarship is **donor based** assistance that will be determined by how much is in the fund in order to equally distribute. If assistance is not what you need and you'd like to help another student by donating to this fund and in return get a State tax allowance, go to www.lutheransgo.org.



Weather permitting the students will be going outside for recess time. Please have your child dress appropriately for the weather.

Potential delays and cancellations for Bethlehem will follow the same as Northern Wells Community Schools.

NO SCHOOL—September 4th for Labor Day



Bethlehem **WILL NOT** be following the Norwell Professional Development 2 hour Delay on Wednesday, September 20th. Morning bus service will NOT be provided. Parents are asked to be sure your Bethlehem student arrives at 9:00 a.m. The 7th & 8th graders will be excused from their Norwell Classes. Please be sure to call the school office if transportation is an issue.

Sometimes it is necessary for our teachers to provide extra clothes for students. We could use a few more gently used clothes to fit our Kindergarten – 2nd grade students. If anyone would have girls or boys shorts, sweatpants, t-shirts, underwear to possibly fit these students and are willing to donate we would appreciate it.

Farm Fresh Eggs for Sale
\$3.00 per dozen
Please contact
Natalie Eschenbacher
260-273-3978 or natalie-knowles77@gmail.com



School pictures **Wednesday, September 13th**

Order forms are being sent home TODAY.

Please return the order form along with your payment on picture day.

All students will be included in the classroom composites.

PTL NEWS

OSSIAN DAYS! On Saturday, September 16th Bethlehem Lutheran School will be walking in the Ossian Days Parade. Asking all parents and students to meet at the old drive in across from the Marathon gas station in Ossian at 4:40. The parade will kick off at 5:00pm. We will be passing out candy and Bethlehem info to parade goers. Come join us for a fun time as we show our Bethlehem pride! Don't forget to wear your Bethlehem shirts!

FALL FESTIVAL! Mark your calendars for Sunday, October 8th from 3:30-6pm! This is a great evening of fun games, food and fellowship. We will need lots of volunteers to help with preparing and serving food as well as running some of the games/activities. We will begin contacting people very soon to help with this event!

Black Tie Gala and Blue Jeans and SILENT AUCTION! Mark your Calendars!

Saturday, November 4th! Bethlehem Lutheran School will be having our 4th annual Gala and Silent Auction at The Lighted Gardens in Ossian. This year's theme is Around the World! More details and tickets are coming soon!



August/September

Pizza Birthday Lunch with the Principal
Thursday, September 21st at 12:00 Noon

Those celebrating will be:

Leila Stuchell, Emmalee Kelley, Daisy Glisson, Micah Leamon,
Vincent Schumm, Ivan Bales, JT Holtzclaw, Clyde Holtzclaw,
Aralee Price, Caleb Rekeweg

Bethlehem families who shop at Kroger are encouraged to Sign up today!

Shop at Kroger and help the Bethlehem Lutheran School tuition assistance fund with the **Kroger Community Rewards Program**.

Register online at krogercommunityrewards.com, be sure to have your Kroger Plus card handy and register your card with Bethlehem Lutheran School as your organization for the reward. **The NPO number for Bethlehem is WG595#.**

If you don't have a Kroger Plus card, they are available at the customer service desk.

Members must swipe their registered Kroger Plus card or use the phone number that is related to their registered card when shopping for each purchase to count.

PLAN TO USE SCRIP FOR ALL YOUR SHOPPING NEEDS Parents are encouraged to use the online **“ShopwithScrip”** app to buy and reload gift cards or for orders, contact our Scrip coordinator, **Melissa Price at 260-433-5307**. Over the years, we have been able to financially support the church general fund and participating school families who have applied credits toward their child's tuition.



Help our 7th and 8th graders raise funds for their Washington D.C. class trip!

Please save your newspapers, catalogs, magazines, junk mail, old phone books, office/school papers and hard/soft cover books. Along with cereal type boxes (NO CARDBOARD). Bring your recyclable paper to school and dispose of in our “PaperGator.”

The recycling company pays by the ton so the more you feed our Gator, the more funds we can collect!

If you need help with pick up for large amounts, please call the school and we will make arrangements to help you.

Let your family, neighbors, and friends know!

Thank you



First Quarter

Chapel Mission Project

Chapel Offering for the 1st Quarter: Helping a Seminarian

This fall quarter, our Wednesday Chapel Offerings are being collected for a seminary student, studying to be a pastor, at Concordia Theological Seminary in Fort Wayne. We reached out to the school and they provided us with a name: Seminarian Travis Hartman and his wife Monica.



Travis and Monica are recently married, so in addition to the expenses of school, they are also beginning to set up their life together. Let's help them out as they prepare to serve the Lord and His Church. Later in the quarter, we'll invite the Hartmans to visit our school.



Pruning hurts but it makes good fruit

Have you ever imagined how a tree, bush, or vine might feel about you chopping off its branches? If it could feel pain, it probably wouldn't like it! But you know that pruning is good for the plant. It might seem hurtful, but it actually helps the plant grow better. This is especially true for grape vines. If they're never pruned, they'll just keep using their energy to grow more leaves. They won't produce very good fruit. But if the branches are pruned and forced to struggle, they will produce more flavorful grapes. Jesus tells us that's what His Father does to us. Jesus said: "I am the true Vine, and My Father is the Vinedresser. Every branch in Me that does not bear fruit He takes away, and every branch that does bear fruit He prunes, that it may bear more fruit" (John 15:1-2). This is the first part of our school's theme passage for the year: Connected to Christ. If we are connected to Christ, like branches on a vine, then we can grow and bear fruit. If there are dead branches, God the Father takes them away. But for living branches connected to the Living Vine, the Father prunes so that we can grow better, stronger, and produce better fruit. God sometimes forces us to struggle in life, but it's always for our good. We might not understand how, but we trust God knows what's best. In the end, we learn from difficulty and challenges, and rejoice to see the good outcomes and fruit in our lives. The Father disciplines us for our good, and Christ supplies our life now and forever.

In Christ

Pastor Anthony Dodgers

BABY SHOWER – The Women of Bethlehem are having an ingathering Baby Shower for Mrs. Streeks. Her due date is September 14th and she is having a boy! Diapers and gift cards would be appreciated and can be left on the table set up in the church hallway or in the school office before Sept. 17.



Mrs. Streeks' last day is Friday, September 8th. Please welcome back, Mrs. Margaret Moore as her full time substitute. Mrs. Moore will be helping in the K-2 classrooms until Mrs. Streeks comes back from leave.



Thank you to everyone for their ongoing prayers and support for MaKayla Berkey our current 4th grade student who was diagnosed with Hodgkins Lymphoma last year. We are thankful to report that she is doing well and is now in remission. Thanks be to God.
"MAKAYLA STRONG"

Tales for Tigers

After an adventurous summer being sorted, sifted, and stored, the library books are stocked on the shelves and ready to be read! The librarians are excited to have students visit the new space and to explore the many new books being added to the collection.

What adventures will you choose this year? Will you journey through Narnia, or discover a Secret Garden? Perhaps you want to solve a mystery with Nancy Drew or Sherlock Holmes? Maybe you'll explore the past, visiting ancient Greece and American colonies. The library shelves are full of books that can take your imagination anywhere.



It took many hands and many hours, but these and many other Phase One tasks have been completed:

- New carpet and paint
- Old metal shelving painted
- New posters and decor
- Picture Book collection reorganized—books were sorted into labeled “browsing bins” according to genre or alphabetized by author’s name. (This system is modeled after Wells County Public Library, so will help students learn general library skills.)
- Many worn or damaged books were repaired, replaced, and/or removed.
- New books added (many purchased with memorial funds in memory of Marsha Meyer)

In Phase Two we are hoping to:

- Fund new, uniform, sturdy wooden shelving, to accommodate picture book bin system, and to provide adequate space for current collection and future expansion.
- Purchase comfortable seating
- Expand to include books for adults (school parents and church members) to browse and borrow.

Ongoing projects include taking inventory of fiction series collections that are missing volumes (and purchasing necessary books), expanding and updating collection (especially upper-level nonfiction, Bible stories and theology books for all ages), applying genre stickers to all fiction books (all reading levels), using displays and signs to label shelves, and auditing library catalog.

Along with an updated space, the library circulation policies were updated and clarified. Parents and students should take a few moments to read over these policies.

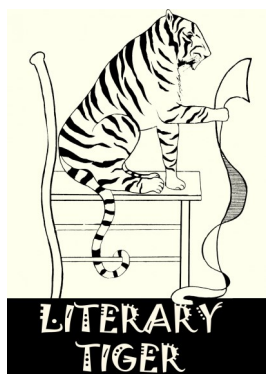
We are grateful for the many volunteers and generous donations that were necessary for this project, and for your continued support!

Happy Reading!

Your Librarians,
Mrs. Jenny Bultemeier and Mrs. DoRena Wirgau



Bethlehem Lutheran School Library Policies



Library Purpose

The purpose of the library is to supplement classroom learning and provide motivation for reading enjoyment. Visiting the school library helps students learn the basics of library use and etiquette.

Circulation Policies

Kindergarten students may have a maximum of one book checked out, loaned for one week.

1st – 8th Grade students may have a maximum of two books checked out, loaned for two weeks.

Books may be renewed a maximum of two times. If a book is not returned after two renewals (ie, three weeks for Kindergarten students, six weeks for other students), fines will accrue at a rate of \$0.25 per item per week.

Due dates and maximum checkout exceptions may be made for book reports, research reports, and other classroom assignments, at the discretion of teachers and/or librarians.

Lost or Damaged Books

Parents will be notified when a book is overdue. If an overdue item is not returned within four weeks after parents are notified (or by the library deadline at the end of the school year) the item will be considered lost and a replacement fee will be charged. A handling fee of \$5 will be added to the cost of book replacement.

Librarians should be notified of any damage that occurs to a library book. If a damaged item needs to be replaced due to inappropriate handling or accident (i.e. water damage), a replacement fee may be charged. A handling fee of \$5 will be added to the cost of book replacement.



Talented Tigers

Many Bethlehem students regularly participate in music, dance, theater, and other arts activities outside of school. We would love to share information about upcoming performances and recitals featuring Bethlehem students! Contact the school office with any details you wish to be shared in future issues of Tiger Tales.

Upcoming Events:

	<p>Fine Arts Day (Parlor City Plaza): September 9 @ 9:45am "Story Time" (Wells County Public Library): September 16 @ 10:30am Bluffton Street Fair (Parlor City Plaza): September 22 @ 5pm</p>
	<p>October 27 @ 7pm * October 28 @ 3pm * October 28 @ 7pm * Located at Auditorium at Creative Arts</p>

Creative Arts Dance Theater Presents:

"Snow White"

September 9, 16, 22

Featuring Tigers: Jonah Bultemeier ("Sneezy") & Alex Furhmann ("Grumpy")

Creative Arts Council of Bluffton Presents:

"The Legend of Sleepy Hollow"

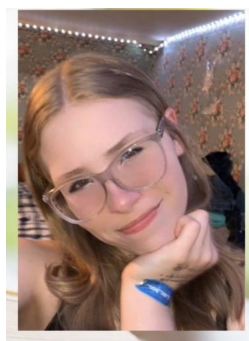
October 27 & 28

Featuring Tiger: Jonah Bultemeier ("Rolf") and Sarena Wirgau (Margaret)

For more information on both events, visit:

<https://www.wellscocreativearts.com/>

Parlor City Shakespeare Company Proudly Presents
 Shakespeare on the Plaza 2023:
Love's Labour's Lost
 Produced in Partnership with The Creative Arts Council of Wells County and Bluffton NOW
September 8, 9, & 10
On the Parlor City Plaza
Downtown Bluffton, Indiana
 Free Admission



Parlor City Shakespeare Artist: Rachel Werling as Mercade and the Forrester. This is Rachel's 5th production and first Shakespeare play. Rachel is joining her big sister, Leah a Junior at Norwell who is in her 8th production performing as Maria. Play starts at 7:30 p.m. on the dates listed above.