

A Look at *O Morning Star* (LSB 395)

January can be a hard month. The days continue to be short and the nights seem extra dark. The novelty of winter weather is long past and spring seems an eternity away. A new year seems to bring the same old problems and struggles. And of course it seems like everybody is sick, getting over being sick, or worried about catching a bug.

Of course it is not all bad. We still have those things we enjoy and opportunities to exercise some creature comforts in the midst of the cold. More importantly, in January the Church is directed to the season of Epiphany and the words of Isaiah 60:1-2: "Arise, shine, for your light has come, and the glory of the Lord has risen upon you. For behold, darkness shall cover the earth, and thick darkness the peoples; but the Lord will arise upon you, and his glory will be seen upon you." There is a darkness worse than winter nights, the darkness of sin and death. But our Lord has come, the Light shining in the darkness. He is our Morningstar, fair and bright, as seen in the words of Philipp Nicolai's famous hymn, appropriate not only for Feast of the Epiphany on January 6, but for the entire season of Epiphany. I invite you to open up, read, and sing *O Morning Star* (LSB 395) as you read the rest of this article.

Nicolai wrote this hymn following two years of devastating plague in Westphalia where he served as a pastor. Our troubles perhaps pale in comparison to what Nicolai and his congregation endured, or maybe our troubles are enough. Either way, Nicolai's hymn speaks the Gospel into the darkest situations of sin and death. Indeed and in truth that is why the Christ has come and why His presence was made known and is made known among us.

Stanzas 1 and 2 employ two beautiful biblical images of Christ. First it describes Him as our Morning Star, shining with truth and light, grace and mercy. Second it describes Him as the heavily Bridegroom, emphasizing the work of Christ in loving us, His bride, even to the point of laying down His life for us to save us and make us holy. Likewise we are united to Him who is our head, finding our life in Him even "as living branches of a tree." This was true for Nicolai's plague-effected parishioners as well as for us even as "earth's deep sadness may perplex us and distress us."

All of this is made known in the love of the Father in sending His Son. Such love is at the heart of stanzas 3 and 4. God delivers this to us in the ministry of the Gospel in His means of grace given for our good in the midst of our distresses. Stanza 3 sings, "Your Word and Spirit, flesh and blood/Refresh our souls with heavenly food/You are our dearest treasure!" As stanza 4 sings, "This is Your great salvation."


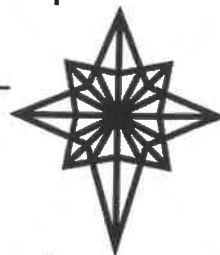
The *Lutheran Service Book Companion to the Hymns* wonderfully summarizes the concluding stanzas. "Stanzas 5 and 6 must be counted among the greatest in Lutheran hymnic writing, as they express the joyful expectation of an eternity in the very presence of Jesus, the One who 'ransomed us in love.' Stanza 6 is particularly rich with reference Revelation: 'first and last, the end and the beginning.'" (I:179) And the final words of "Amen! Amen!/Come, Lord Jesus!/Crown of gladness!/We are yearning/For the day of Your returning!"

May our Morning Star strengthen and keep you with the light of His Gospel this January, this Epiphany season, and for the rest of our lives even to eternal life.

Rev. Samuel Wirgau



January 2023

Sun	Mon	Tue	Wed	Thu	Fri	Sat
1	2	3	4 		6 7p Epiphany Divine Service	7 9 am Book Club at Crimson House
8 9 a Divine Ser- vice 10:15a ABC & SS	9 7p Handbell Choir Practice	10	11 10:15 Chapel 7p Brief Spoken Service Adult Choir Prac- tice	12 7:30p Board of Christian Ed Meet- ing	13 Varsity Girls Tournament	14 Varsity Girls Tournament
15 9 a Divine Ser- vice 10:15 ABC & SS 11:15a Board of Elders Meeting	16 7p Handbell Choir Practice	17	18 10:15 Chapel 7p Brief Spoken Service Adult Choir Prac- tice	19 1:30p LWML Bible Study	20 JV Boys Tour- nament	21 JV Boys Tour- nament
22 9 a Divine Ser- vice 10:15 ABC & SS Noon-3pm School Open House	23 6p PTL Meet- ing 7p Handbell Choir Practice	24	25 10:15 Chapel 7p Brief Spoken Service Adult Choir Prac- tice	26	27 JV Girls Tour- nament	28 JV Girls Tour- nament
29 9 a Divine Ser- vice 10:15 ABC & SS	30 7p Handbell Choir Practice	31	<div>National Lutheran Schools Week</div> 			

January 6, 2023

BETHLEHEM FINANCIAL REPORT

General Fund (Home Fund) Account to Pay Operating Bills \$35,646.43
Savings Fund Balances

	Accrued Amount	Restricted Amount Borrowed	Account Balance
Improvement Fund	\$16,816.99	(\$ 0.00)	\$16,816.99
Scholarship Fund	\$ 5,107.15	(\$ 0.00)	\$ 5,107.15
Music Fund	\$ 5,185.78	(\$ 0.00)	\$ 5,185.78
	<u>\$ 2,369.00</u>	(\$ 0.00)	<u>\$ 2,369.00</u>
TOTALS	\$29,478.92	(\$ 0.00)	\$29,478.92

Checkbook Balance

\$35,646.43

Savings Account Balance

\$29,478.92

Total Savings and Checking Balance

\$65,125.35

Borrowed Amounts

Restricted Savings Account	\$ 0.00
Operating Loan Amount	\$ 0.00
TOTAL BORROWED	<u>\$ 0.00</u>

Bills due week of December 8- \$6,000

Bills due week of December 15- \$15,000



January 1, 2023 – Epiphany
Observed Psalm 31:1-5; Isaiah
60:1-6; Matthew 2:1-12 “New
Year’s Comfort” - Sermon
Text: Matthew 2:1-12 Rev. Dr.
Walter Maier III Whenever you
stand at the beginning of a new
year, you have concerns. What

events will take place in the world? What will happen
in your own life? The good news is that the Triune
God rules the universe and controls world history.
This God also knows you, loves you, and will save
you. You are in his hands, and that is the best place to
be.

January 8, 2023 – The Baptism of Our Lord Psalm
29; Romans 6:1-11; Matthew 3:13-17 “Newness of
Life” - Sermon Text: Romans 6:2-4 Rev. Thomas
Eggold One of the most important things the Bible
teaches us about Baptism is death. In fact, Paul’s
words in Romans 6 tell us that Baptism is first about
death. As odd as this may sound, it is only when we
understand the death that occurs in our Baptism, that
we can fully live as God’s people.

January 15, 2023 – Second Sunday after the Epiphany
Psalm 40:1-11; Isaiah 49:1-7; John 1:29-42a “Lamb
of God” - Sermon Text: John 1:29 Rev. Shayne Jonk-
er Once again, John the Baptist is our preacher, point-
ing the way, the only way to the One who is the Way,
the Truth, and the Life. But don’t look to John, he’s
not much to look at anyway, look to where he’s point-
ing. Look to Jesus. “Behold the Lamb of God, who
takes away the sin of the world.”

January 22, 2023 – Third Sunday after the Epiphany
Psalm 27:1-9; 1 Corinthians 1:10-18; Matthew 4:12-
25 “A Divided Family” - Sermon Text: 1 Corinthians
1:10-18 Rev. Paul Shoemaker It is always tragic when
families are divided. The hurts and resentments can
last for a lifetime and even be passed on to the next
generation. The Apostle Paul encourages all families,
including our church family, to look to Jesus and His
love for us to resolve all quarrels and divisions.

January 29, 2023 – Fourth Sunday after the Epiphany
Psalm 15; Micah 6:8; Matthew 5:1-12 “Walk Humbly
with God” - Sermon Text: Micah 6:8 Rev. William
Mueller Through the prophet Micah our Lord gives a
great charge: walk humbly with Him. In good fashion
we ask the question, what does this mean? How do
we walk humbly with God? And why does it matter?

January



- 03) Marissa Geiger
- 04) Sara Fowler
- 06) Gary Werling
- 07) Ryan Graft
Dan Kleppinger
- 08) Eden Stoppenhagen
Sylvia Wann
- 10) Nikki Caldwell
Marilyn Franke Gary Lesh
Kyle Patrick
Delores Scheumann
- 11) Hallie Brege
Judith Lockwood
- 12) Melissa Price
- 15) Jacob Bultemeier
- 18) Joshua Brown
Steve Conrad
Jordin Saalfrank
Ethan Williamson
- 19) Isla Meyer
- 21) DoRena Wirgau
- 22) Jennifer Meyer
- 24) Brittany Schumm
- 25) Briar Bauemeister
- 26) Tim Baker
Jason Lesh
Kim Werling
- 27) Tom Patrick
- 29) Jared Conrad
Olivia Householder
Jacob Werling
Kirsten Whitsitt
- 30) Dorothy Krick
Tara Werling
- 31) Logan Graft
Matthew Rekweg



**The Endowment Committee thanks the Lord and the congregation
for the generous gifts to the Endowment Fund.**

Here is the monthly report for the Bethlehem Lutheran School Endowment Fund by the Lutheran Foundation that just became available today. The following information is accurate as of October 31, 2022:

\$190,927.82 - Amount Bethlehem sent in since 2009
177,883.00 - Amount the Lutheran Foundation matched
203,384.44 - Amount generated since 2009
-104,500.00 - Amount disbursed to Bethlehem since 2009
\$467,695.26 - Value of the Endowment Fund as of October 31, 2022

Enjoy the convenience of Electronic Giving!

Please consider setting up a recurring giving plan. Automating your financial commitments means your contributions will be received on a steady, uninterrupted basis. If you wish to make a single online donation or set up recurring donations, you may do so on our website, www.bethlehemossian.org through our third-party provider-Vanco Payment Solutions. Online giving may be done as a credit card payment or ACH bank transfer. Please note, the church will incur a \$0.45 processing fee on each online transaction. Credit card transactions will be charged at least 2.75% fee. For ACH bank transfers, there is a fee of 1% of each dollar charged. This may affect how you wish to direct your online donations. You may also elect to increase your gift to cover the cost of the transaction fees.

2023 ALTAR SCHEDULE has been posted on the bulletin board or see Amy Schueler or Tisha Laley to sign up. Please consider helping prepare the altar for a few weeks or a month. We are happy to show you how to do this. Thank you.

2023 FLOWER CHART IS NOW POSTED Members are reminded to sign up for flowers to be placed on the Altar or Hymn board table. Simply use the 2021 flower chart posted on the bulletin board to sign up on the date you wish to have flowers. Purchased flowers should be brought to church before the designated date to be sure they are placed properly. For help in placing the flowers, please contact Tisha Laley or Amy Schueler. **Announcements concerning the flowers should be given to the church office.** Thank you

Happy Anniversary!

Jan. 2 Jerry and Judith Lockwood (30)
Jan. 4 Dan and Sue Buchinger (48)
Jan. 31 Keith and Dorothy Krick (47)



Elder Routes

Bruce Werling	A-B
Glen Werling	C-F
Ted Schumm	G-K
Jerry Meyer	L-P
Lloyd Meyer	Q-S
Dave Flesch	T-Z



Installation Service of Rev. Anthony Dodgers current Associate Pastor, Headmaster of the school and Teacher of 7th and 8th grade

Picture, from left to right, are:

Front row: Rev. Peter Brock, Rev. Daniel Dahling, Rev. Dr. Geoffrey Boyle, Rev. Samuel Wirgau, Rev. Anthony Dodgers, Rev. Dr. D. Richard Stuckwisch, Rev. George Odhiambo, Rev. Daniel Burfiend, Rev. Andrew Yeager

Back row: Seminarian Morgan Phillips, Rev. Zachary Oedewaldt, Rev. Berett Steffen, Rev. Dr. Benjamin Mayes, Rev. Matthew Wietfeldt, Rev. Dr. Daniel Brege, Rev. Martin Moehring

The Decatur Lutheran Bible Institute If you've never attended the Decatur Lutheran Bible Institute (LBI), make 2023 the year you DO! LBI classes meet on Tuesday nights January 24, 31, February 7 & 14 at Wyneken Memorial Lutheran School, Decatur. Come and learn. Choose from four courses of study: Psalms – Dr. Geoff Boyle, Professor at CTSFW, Gospel of Isaiah– Dr. Ryan Tietz, Professor at CTSFW, The Sin of Racism and Gospel Response – Rev. Michael Saylor, Redeemer, Convoy, OH, The Bound Will and Modern Christendom– Rev. Berett Steffen, Associate Pastor at St. John, Bingen. For more information, please contact Mike or Linda Bultemeier.

BETHLEHEM LYF



January 2022

BY DEACONESS WENDY BOEHM

The youth recently participated in the children's Christmas Service as readers. We also had our Christmas party in December. Above is a picture from the party. Everyone had to place a plate on top of their head and draw what I read off. It was a fun and comical experience. We also played a few other fun games as well along with a taco bar and decorated cookies.

Thank you again to all those who helped and came to all of the advent suppers! These are wonderful opportunities to have fellowship together as well as support the youth.

In January we will have our regular bible study again starting the 8th of January. We look forward to a ski trip sometime in January or February.

UPCOMING EVENTS

January Donuts:
Leah and Rachel

January 8:
LYF Bible Study

January 22:
LYF Bible Study

January 2023

Mite Challenge Calendar



MY CUP OVERFLOWS: *You prepare a table before me in the presence of my enemies; you anoint my head with oil; my cup overflows (Psalm 23:5).*

Sunday	Monday	Tuesday	Wednesday	Thursday	Friday	Saturday
1 Thank the Lord for another year. Donate 23¢	2 Walk extra steps today. Donate 95¢	3 Read Matthew 11:28-29. Donate 50¢	4 Pray for the Braille ministry. Donate 25¢	5 Watch for birds of the air and praise the Lord for them. Donate 10¢	6 It's Epiphany. Jesus came to save us. Share that News! Donate 90¢	7 Recite Psalm 23. Donate 70¢
8 Call and visit with a shut-in today. Donate 75¢	9 Pray for law enforcement officers. Donate 60¢	10 Sing "The Lord's My Shepherd" LSB 710. Donate 95¢	11 Share how your "cup overflows" with a friend. Donate 65¢	12 Buy a cup of tea or coffee for someone. Donate 35¢	13 Pray for the LWML mission grants. Donate 45¢	14 Thank the Lord for the vocation to which you are called. Donate 10¢
15 Find a hat to donate. Donate 40¢	16 <i>Be still and know that I am God</i> (Psalm 46:1-10). Donate 90¢	17 Donate to a food pantry. Donate 30¢	18 Recite The Lord's Prayer. Donate 50¢	19 Enjoy some popcorn today. Donate 45¢	20 Read through the <i>Lutheran Woman's Quarterly</i> . Donate 80¢	21 Give extra hugs today. Donate 35¢
22 Pray for your pastor, his wife, and family. Donate 10¢	23 Handwrite and mail a "thinking of you" card. Donate 45¢	24 Compliment those you see doing a good job. Donate 30¢	25 Read Ephesians 1:3. Donate 75¢	26 Praise the Lord for your spouse or dear friends. Donate 80¢	27 Share a piece of chocolate cake. Donate 50¢	28 Donate to a quilting group. Donate 20¢
29 Lift up the young women of LWML in prayer. Donate 50¢	30 Praise the Lord for winter precipitation. Donate 60¢	31 Pray over your District Mission Grants. Donate 35¢				

2021-2023 Biennium
Mission Goal:
\$2,150,000

Total Mites Received:
\$1,925,204.38

Total Mites
Still Needed:
\$224,795.62

Mission Grants Goal
\$2,150,000

\$1,925,204.38



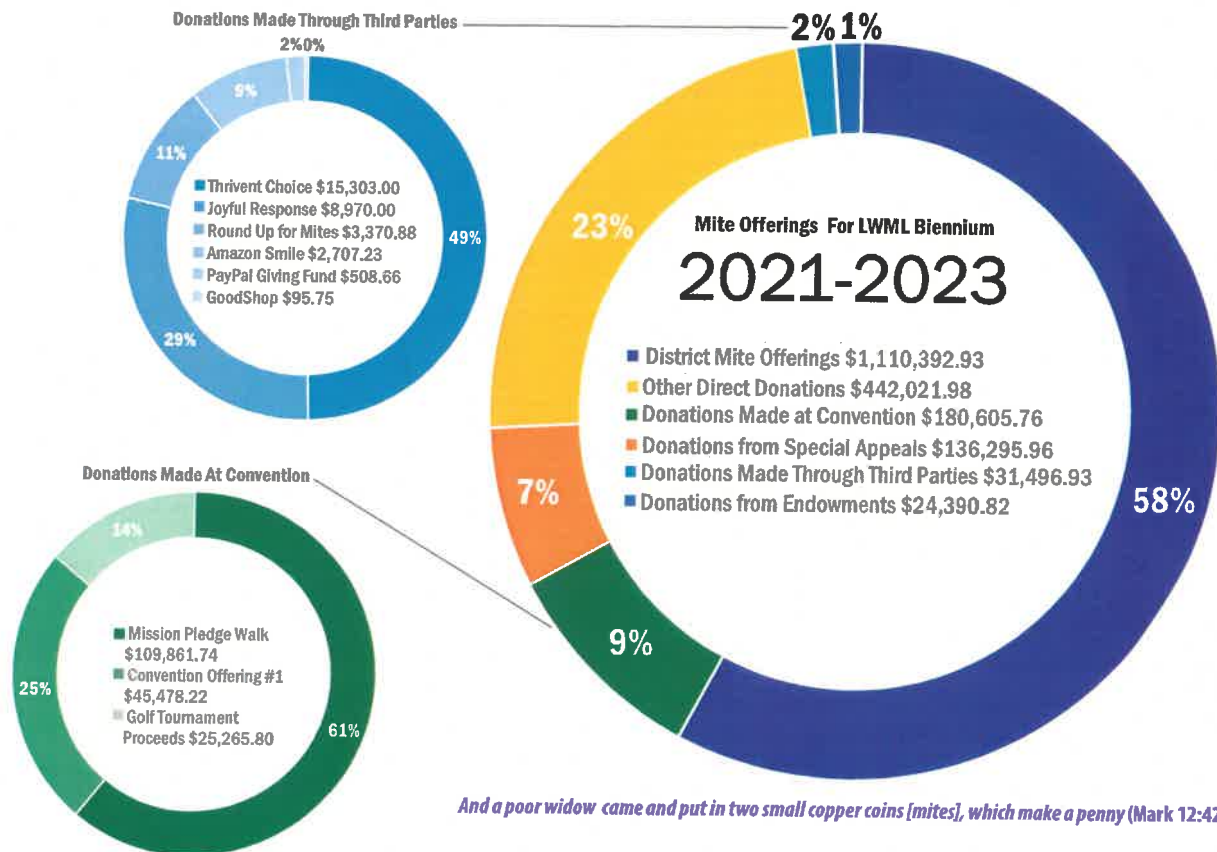
Mite Offerings
Received October 2022
\$90,080.86

2021-2023 LWML Mission Goal Report



October 31, 2022

Overall Mite Sources



And a poor widow came and put in two small copper coins [mites], which make a penny (Mark 12:42).

Monthly Gifts Received To Support Our Mission Grants

MONTH	MONTHLY MITE OFFERING RECEIVED	CUMULATIVE MITE OFFERING RECEIVED	CUMULATIVE BUDGETED MITE OFFERINGS	CUMULATIVE OVER/(UNDER) BUDGETED MITE OFFERINGS	TOTAL MITE OFFERINGS STILL NEEDED
Apr 2021	\$79,467.09	\$79,467.09	\$89,583.33	\$(10,116.24)	\$2,070,532.91
May 2021	\$64,574.90	\$144,041.99	\$179,166.66	\$(35,124.67)	\$2,005,958.01
Jun 2021	\$136,829.26	\$280,871.25	\$268,750.00	\$12,121.25	\$1,869,128.75
Jul 2021	\$62,195.89	\$343,067.14	\$358,333.33	\$(15,266.19)	\$1,806,932.86
Aug 2021	\$208,122.84	\$551,189.98	\$447,916.66	\$103,273.32	\$1,598,810.02
Sep 2021	\$92,978.28	\$644,168.26	\$537,500.00	\$106,668.26	\$1,505,831.74
Oct 2021	\$80,269.10	\$724,437.36	\$627,083.33	\$97,354.03	\$1,425,562.64
Nov 2021	\$93,554.19	\$817,991.55	\$716,666.66	\$101,324.89	\$1,332,008.45
Dec 2021	\$161,011.44	\$979,002.99	\$806,250.00	\$172,752.99	\$1,170,997.01
Jan 2022	\$140,683.95	\$1,119,686.94	\$895,833.33	\$223,853.61	\$1,030,313.06
Feb 2022	\$99,551.37	\$1,219,238.31	\$985,416.66	\$233,821.65	\$930,761.69
Mar 2022	\$101,563.88	\$1,320,802.19	\$1,075,000.00	\$245,802.19	\$829,197.81

MONTH	MONTHLY MITE OFFERING RECEIVED	CUMULATIVE MITE OFFERING RECEIVED	CUMULATIVE BUDGETED MITE OFFERINGS	CUMULATIVE OVER/(UNDER) BUDGETED MITE OFFERINGS	TOTAL MITE OFFERINGS STILL NEEDED
Apr 2022	\$107,323.25	\$1,428,125.44	\$1,164,583.33	\$263,542.11	\$721,874.56
May 2022	\$84,379.75	\$1,512,505.19	\$1,254,166.66	\$258,338.53	\$637,494.81
Jun 2022	\$85,339.19	\$1,597,844.38	\$1,343,750.00	\$254,094.38	\$552,155.62
Jul 2022	\$49,014.08	\$1,646,858.46	\$1,433,333.33	\$213,525.13	\$503,141.54
Aug 2022	\$93,641.78	\$1,740,500.24	\$1,522,916.66	\$217,583.58	\$409,499.76
Sep 2022	\$94,623.28	\$1,835,123.52	\$1,612,500.00	\$222,623.52	\$314,876.48
Oct 2022	\$90,080.86	\$1,925,204.38	\$1,702,083.33	\$223,121.05	\$224,795.62
Nov 2022					
Dec 2022					
Jan 2023					
Feb 2023					
Mar 2023					

For more questions, or to learn more about us, 1-800-252-5965 or lwml.org





Oh ^{THE} Places
We'll Go!

December 5, 2022

Bethlehem Lutheran Church
6514 E 750 N
Ossian, IN 46777

Dear Friends,

Thank you so much for blessing the clients of the Hope Clinic with the wonderful baby shower gifts. We were given many wonderful items to help stock our shelves!

In addition, your monetary gift of \$276.67 will go directly to the ministry of The Hope Clinic, reaching the women and men who come in our door—facing an unplanned pregnancy.

And because of your gifts, those we see will hear of the endless love of Jesus Christ.

Each month, we are seeing lives changed and lives saved. For that, we thank you for your commitment to all that happens here.

This ministry is truly a community effort and would not be possible without your prayers and support. Thank you so much for your partnership with us.

We consider it an honor that you chose to join God's hand at work through the ministry of the Hope Clinic!

Thank you for participating in these events. You have made a difference, and we appreciate you.

Sincerely,

Hope Clinic Board of Directors, Volunteers, and Staff

"Our Mission: To be the first choice for anyone facing an unplanned pregnancy."



it takes a
community.



When a woman finds herself facing an unplanned pregnancy, it is easy for her to feel alone. What if the father doesn't want to be involved? What if her family refuses to help? What if her friends are unsupportive? With fear crowding in, she may feel like abortion is her only option.

But that is where we step in. When she walks through our doors, we welcome her with open arms. Our client advocates listen to her story, answer her questions, and offer positive alternatives. Our medical team is ready to administer tests and provide an ultrasound that lets her see her baby for the first time. Our educators invite her to participate in programs that enable her to feel more confident about becoming a mother. Our volunteers gather supplies for her that might have otherwise been beyond her financial means. Our clinic comes together to surround her with God's perfect love.

And that is where you step in. You provide the support that makes all of this possible. Whenever you offer up your gifts and talents, you join our community and help families find hope. **How will you join in our community?**

VOLUNTEER

Don't worry, we will train you!

BECOME A FINANCIAL PARTNER

No contribution is too small.

DONATE SERVICES

Your skills can make a difference.

BE A CHURCH LIAISON

Help us partner
with your church.



Berne • 589-3561

Decatur • 728-4191

friendsofthehopeclinic.net



SCAN TO VISIT OUR
WEBSITE!



IT TAKES A
COMMUNITY TO
PROTECT AND
CELEBRATE THE
SANCTITY OF
HUMAN LIFE -
**WILL YOU
JOIN OURS?**



TIGER TALES

"Making Disciples for Life"



The Bethlehem students and staff would like to thank the Ladies Aid for a wonderful Christmas luncheon on Monday, December 5th. The children were also given a Bethlehem 125th Anniversary ornament and a candy cane. The children thanked the ladies by singing some Christmas carols.

CALENDAR

Jan. 4 Back to School
Jan. 6 7:00 Epiphany Service
Jan. 6 Report cards sent home
Jan. 13-14 Var. Girls Tournament
Jan. 19 Pizza Birthday Lunch
Jan. 20-21 JV Boys Tournament
Jan. 22 Open House
Jan. 23 PTL Meeting
Jan. 22-27 Lutheran Schools Week
Jan. 27-28 JV Girls Tournament

JANUARY 2023

Sun	Mon	Tue	Wed	Thu	Fri	Sat
1	2	3	4	5	6	7
8	9	10	11	12	13	14
15	16	17	18	19	20	21
22	23	24	25	26	27	28
29	30	31				

JANUARY BIRTHDAYS

Jan. 9 Sienna Sommer
Jan. 14 June Trammel
Jan. 15 MaKayla Berkey
Jan. 15 Jacob Bultemeier
Jan. 21 Ronnie Trammel
Jan. 31 Matthew Rekeweg



Weather permitting the students will be going outside for recess time. Please have your child dress appropriately for the weather.



Potential delays and cancellations for Bethlehem will follow the same as Northern Wells Community Schools. Sign up for text alerts at www.wane.com/text-alerts.

Elearning will be assigned on designated closings.



Please help our school. Bethlehem Lutheran School has begun a fundraiser through SchoolStore.net. If you wish to donate directly to the school, purchase gift cards to multiple online shopping sources, or purchase many gift items use this link: <https://bit.ly/3Wn7U8c> to access our specific SchoolStore account. YES, you can also apply SCRIP purchases to the gift cards you buy here, doubling your benefit to the school. If you have any questions, contact Mr. Meyer @ pmeyer@bethlsossian.org Thank you for your support.

The 3-4th grade students along with Mrs. De-Frain, Pastor Dodgers and chaperones were able to attend a performance of The Nutcracker at the Fort Wayne Creative Arts Center. The students had an opportunity to witness this wonderful Christmas musical ballet.



Fun was had by all!



Bethlehem families who shop at Kroger are encouraged to Sign up today!

Shop at Kroger and help the Bethlehem Lutheran School tuition assistance fund with the Kroger Community Rewards Program.

Register online at krogercommunityrewards.com, be sure to have your Kroger Plus card handy and register your card with Bethlehem Lutheran School as your organization for the reward. **The NPO number for Bethlehem is WG595#.**

If you don't have a Kroger Plus card, they are available at the customer service desk.

Members must swipe their registered Kroger Plus card or use the phone number that is related to their registered card when shopping for each purchase to count.

PLAN TO USE SCRIP FOR ALL YOUR SHOPPING NEEDS Parents are encouraged to use the online "ShopwithScrip" app to buy and reload gift cards or for orders, contact our Scrip coordinator, **Melissa Price at 260-433-5307**. Over the years, we have been able to financially support the church general fund and participating school families who have applied credits toward their child's tuition.



Box Tops for Education - Use the app (BTFE.com), and scan your receipt to give credits to the school. Thank you



Help our 7th and 8th graders raise funds for their Washington D.C. class trip!

Please save your newspapers, catalogs, magazines, junk mail, old phone books, office/school papers and hard/soft cover books. Along with cereal type boxes (NO CARDBOARD). Bring your recyclable paper to school and dispose of in our "PaperGator."

The recycling company pays by the ton so the more you feed our Gator, the more funds we can collect!

If you need help with pick up for large amounts, please call the school and we will make arrangements to help you.

Let your family, neighbors, and friends know!

Thank you



The third Quarter Chapel offering is for the Weber Fund.

PAGE 4



The Weber Fund is a fund created in honor of John Weber, principal at Central Lutheran, New Haven. This fund is established to help new teachers in the Northeast Indiana partnership of schools. Mr. Weber was a strong supporter of Lutheran Education and future church workers. Money given to this fund is awarded to new teachers to help with moving and living expenses as they begin their careers in church work.

Principal's Message

Seeking Wisdom with the Wise Men

At Epiphany (Jan. 6), we remember the Wise Men who came to worship the infant Jesus (Matt. 2:1-12). They were called the Magi, which is where we get our word for "magician." But they were not mere entertainers. The Magi were the academics and scientists of their society. They studied the stars and noticed patterns in the natural world. They gathered the history and literature of their people. Their job was to seek wisdom from nature and the minds of men. Somehow, through their study of God's world (even though they were not believers in the one true God), they got the idea from a miraculous star that a King of the Jews was born. And apparently, they realized this was no ordinary king only for the Jewish people, but a King and Savior of all people. That's why they came to worship Him.

But a problem came when all their learning, all their research, all their human wisdom only got them to Jerusalem, and there was no newborn King. They needed another kind of wisdom to get them to Bethlehem and the baby Jesus. They needed God's Word. In Jerusalem, they heard from the writings of the prophet Micah who said the Savior would be born in Bethlehem. God's Word brought them knowledge that they couldn't find anywhere else. And so then, with their wisdom and God's wisdom, with the star and the Scripture, they made their way to Bethlehem and the home of Jesus.

At a Lutheran School, we follow the example of the Wise Men. We seek wisdom from nature and great human minds. We study science and math, history and literature. But as good as that human wisdom is, it can only get us so far. We need the wisdom of God. And so our days and weeks are centered on God's Word. Everything we teach is guided by the wisdom that God gives us in the Holy Scriptures. And so then, with both man's wisdom and God's wisdom, we are able to prepare students for life in this world and for life in the world to come. We grow into people who can serve God in faith and our neighbors in love. We learn how to fulfill our various vocations in the home, in church, and in society, all the while we are making our way to that eternal home of Jesus, our Savior and King.

Happy Epiphany!

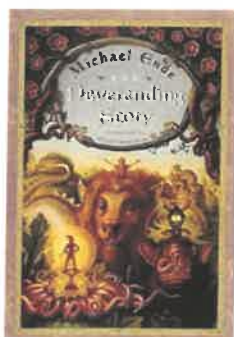
Your servant in Christ,

Pastor Dodgers



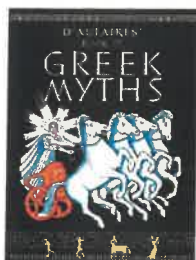
"I wonder . . . what's in a book while it's closed. Oh, I know it's full of letters printed on paper, but all the same, something must be happening, because as soon as I open it, there's a whole story with people I don't know yet and all kinds of adventures, deeds and battles. And sometimes there are storms at sea, or it takes you to strange cities and countries. All those things are somehow shut in a book. Of course you have to read it to find out. But it's already there, that's the funny thing. I just wish I knew how it could be."

Suddenly an almost festive mood came over him. He settled himself down, picked up the book, opened it to the first page, and began to read..."



You can join this adventure in Michael Ende's "The Neverending Story" – one of the many new books in our school library. It is a perfect fantasy novel for a dreary January day. After reading the book your parents may be able to help you find the 1984 movie (they probably remember it, ask!).

"The Wingfeather Saga" is another fantasy story adapted for the screen. An animated show based on the book series, by Christian author Andrew Peterson, can be found (with your parents' permission) on YouTube. Several students have checked out these books, and we would love to hear your thoughts comparing the books and the show.



Students who enjoy fantasy books will also appreciate collections of fairy tales and myths, which are the inspiration for many stories. We have a few new options in the library, and would love to help you find them!

Happy Reading!

December / January Birthday Lunch with Pastor Dodgers

Thursday, January 19th at 12:00 Noon

Those celebrating will be:

Annabelle Fuhrmann, Rachel Werling, Anna Haiflich, Maddox Kelley, Emma Campbell, Eliana Leamon, Sienna Sommer, June Trammel, MaKayla Berkey, Jacob Bultemeier, Ronnie Trammel, Matthew Rekeweg





Thank you for supporting the Northern Wells Food Pantry located in Ossian, IN. During our second quarter of the school year, our school families collected canned goods, personal hygiene items, boxed foods, paper products and snack items. Over 400 items total were collected! The students have achieved our overall goal and will be awarded later in the school year with something special! Along with the items collected we were also able to donate \$383.14 in chapel offerings. This wonderful mission will go to needy families in the community through the works of the Food Pantry. All of the items and a check will be delivered to the Food Pantry on Friday, Jan. 6th by Pastor Dodgers and his 7 & 8th grade students. Thank you so very much.

We would like to thank Mr. Buchinger and Mr. Brinkley for helping to teach our 7th & 8th grade students the 1st semester of the school year. Both, willingly, had come out of retirement to fill this position until Pastor Dodgers was hired. We appreciate their presence and willingness to help. Thank you



The Children's Christmas Service was held on Wednesday, December 21st. We thank everyone for coming to this joyous worship service. We would like to recognize our Tableau characters in costume: Mary-Aralea Price, Joseph-Tucker Eschenbacher, Angel Gabriel-Ginny Wirgau, Elizabeth-Annabelle Fuhrmann, Shepherds-Maddox Kelley, Ronnie Trammel, Lucas Haiflich and Weslynn Nahrwold. We would also like to thank our extra angels: Lacey Garwick, Sienna Sommer, Maren Meyer, Madeline Schumm, Gabby Campbell and Eliana Leamon (not pictured due to illness).

A special thank you to Kantor Brinkley and the Junior Choir, Mrs. Amy Schueler and the K-3 Choir along with our staff and students for this wonderful service.



Making
Disciples
for Life



NATIONAL
LUTHERAN
SCHOOLS WEEK 2023

National Lutheran Schools Week January 22-27, 2023

National Lutheran Schools Week provides our network of more than 1,800 LCMS preschools, elementary schools and high schools with the public opportunity to proclaim and celebrate God's work among us in Lutheran schools.

We thank God for the opportunity to provide excellent academic preparation for the children we serve. We are most grateful for the opportunity to share Jesus' amazing love with children and their families.

National Lutheran Schools Week gives us an opportunity to proclaim these great blessings within the communities we serve. Our schools are amazing incubators for faithful witness of God's love for us through Christ by teachers and students alike.

"Making Disciples for Life" is the theme for the 2023 National Lutheran Schools Week celebration. The associated scripture verse is Matthew 28:18-20 which says:

"And Jesus came and said to them, 'All authority in heaven and on earth has been given to me. Go therefore and make disciples of all nations, baptizing them in the name of the Father and of the Son and of the Holy Spirit, teaching them to observe all that I have commanded you. And behold, I am with you always, to the end of the age.'"

Each day of the school week, students will participate in special activities and dress up days:

Sunday, January 22 Bethlehem Lutheran School will hold an Open House from Noon-3:00

Monday, January 23rd we will celebrate 100 days of school and have a school Treasure Hunt

Tuesday, January 24th wear your favorite color and will have a Skit Show

Wednesday, January 25th "Dress your best" and will have a Service Project

Thursday, January 26th Dress as your favorite book character and overall school reading circles

Friday, January 27th wear school shirts or colors and participation in Tiger Olympics

Catch the Lutheran SPIRIT

OPEN HOUSE

Jan 22 | Noon-3:00pm



At Bethlehem Lutheran School, you'll find a culture that puts Christ and families first.

- Every staff member knows you by name.
- Every lesson plan keeps Christ at the center.
- Every student is loved unconditionally.

At Bethlehem Lutheran school, your kids will get a high-quality education. And your whole family will find a home away from home. Because we believe every parent deserves a partner.



Bethlehem Lutheran School

67545 N650E, Ossian, IN 46777

If there is inclement weather, please check our Facebook page as we will publicize any updates or need to reschedule.



January 2023

SUNDAY	MONDAY	TUESDAY	WEDNESDAY	THURSDAY	FRIDAY	SATURDAY
1 JV girls Tournament @ SJE	2	3	4	5 JV girls Tournament @ SJE	6	7 JV girls Tournament @ SJE
8 JV girls Tournament @ SJE	9 Game @home against Sub Bethlehem 4:30 pm JV girls 5:45 pm Boys 7 pm V Girls	10 Girls practice after school til 5	11 Boys and Girls practice after school til 5.	12 Varsity Girls ONLY practice after school til 5.	13 Varsity Girls Tournaments	14 Varsity Girls Tournaments
15	16 Boys practice after school til 5	17 JV Girls ONLY practice after school til 5.	18 Boys and Girls practice after school til 5.	19 JV Girls ONLY practice after school til 5.	20 JV Boys Tournaments	21 JV Boys Tournaments
22	23	24 JV girls ONLY practice after school til 5.	25 JV Girls ONLY practice after school til 5.	26 JV girls ONLY practice after school til 5.	27 JV Girls Tournaments	28 JV Girls Tournaments
29	30	31				