



TIGER TALES

"Making Disciples for Life"



Ossian Days Parade

CALENDAR

Oct. 2 Church Pork Chop Dinner
 Oct. 5 NO DELAY
 Oct. 7 End of 1st Quarter
 Oct. 9 Fall Festival
 Oct. 10 Book Fair
 Oct. 11-13 Parent Teacher Conferences
 Oct. 15-23 Fall Break NO SCHOOL
 Oct. 23 Church Council
 Oct. 24 PTL Meeting 6:00 p.m.

OCTOBER 2022

Sun	Mon	Tue	Wed	Thu	Fri	Sat
2	3	4	5	6	7	8
9	10	11	12	13	14	15
16	17	18	19	20	21	22
23	24	25	26	27	28	29
30	31					

OCTOBER BIRTHDAYS

Oct. 10 Maise Patrick
 Oct. 11 Alex Fuhrmann
 Oct. 14 Mackenzie Price
 Oct. 19 Natalie Yoquelet
 Oct. 23 Gabriella Campbell
 Oct. 25 Evelyn Wanner



As a parent, you probably know that keeping your kids from spending all day (and night!) on their devices can be a challenge, and you're not alone. But finding a quick and easy way to manage screen time and filter the web doesn't have to be mission impossible — or cost an arm and a leg.

Bethlehem has partnered with Bark to offer our families a **free Bark Jr subscription (\$60/year value)** for life!

Use the URL below to activate your free Bark Jr account:
<https://www.bark.us/bark-jr/signup?ref=JFK944B>

What am I getting with a free Bark Jr account?

- Ability to manage screen time on mobile devices
- Set different rules for school time and bedtime
- Filter which websites your kids can visit
- Keep up with kids with location check-ins



What is Bark?

In addition to screen time, Bark can help parents proactively monitor text messages, YouTube, emails, and 30+ different social networks for potential safety concerns, so busy parents can save time and gain peace of mind. Bark currently helps protect over 5.6 million kids in the US.

Thank you

Bethlehem Lutheran School

With Gradelink you can stay updated on your child's academic progress at school and get information on upcoming assignments such as assignment descriptions and due dates. Login information is available from your child's teacher or from the school office.

The following information is available to you when you **log in to Gradelink**:

- Current Grade in each class
 - Current GPA for the term, if applicable
 - Descriptions, Grades, and Teacher Comments for graded assignments
 - Descriptions and Due Dates for upcoming assignments
 - Assignment handouts or documents (attachments)
 - Email Alerts you can configure for grades and attendance
 - Attendance Information
 - Transcript Information, if applicable
 - Billing Information, if applicable
- To access this information go to www.gradelink.com and click on the green Log In button.



PLEASE CALL THE SCHOOL OFFICE IF YOU NEED ANY HELP

This is the student portal Mr. Meyer maintains that gives the students quick access to a lot of our programs. Parents may also access this site to see what is going on in grades 3 - 8 grades. <https://sites.google.com/bethlssossian.org/bethlehemstudentportal/home>

PRIVACY NOTICE

We all love to share pictures of our child's school activities and accomplishments. However, we have to be very careful where those pictures are posted and respect that other students might also be in the picture. Parents please remember to respect do not post pictures that may have students in them other than your own child. If you have any questions or concerns, please contact the school office before posting anything. Thank you

Weather permitting the students will be going outside for recess time. Please have your child dress appropriately for the weather.



Potential delays and cancellations for Bethlehem will follow the same as Northern Wells Community Schools. Sign up for text alerts at www.wane.com/text-alerts.

Bethlehem **WILL NOT** be following the Norwell Professional Development 2 hour Delay on Wednesday, October 5th. Morning bus service will NOT be provided. Parents are asked to be sure your Bethlehem student arrives at 9:00 a.m. The 7th & 8th graders will be excused from their Norwell Classes. Please be sure to call the school office if transportation is an issue.

Bethlehem will be closed from October 17-21 for Fall Break

PTL NEWS

FALL FESTIVAL! Sunday, October 9th from 4-6:30 pm! This is a great evening of fun games, food and fellowship. Everyone is welcome to attend!

We will need lots of volunteers to help with preparing and serving food as well as running some of the games/activities. We will begin contacting people very soon to help with this event!

PTL MEETING—Monday, October 24th at 6:00 pm Please plan to attend.

Black tie Gala and SILENT AUCTION! Saturday, November 5th! Bethlehem Lutheran School will be having our 3rd annual Silent Auction and Gala at The Lighted Gardens. This year's theme is Midnight at the Masquerade Murder Mystery! Tickets can be purchased from the school office.

Skating Party—Mark your calendars for Friday, December 9th



Parent – Teacher Conferences will be held

Tuesday, October 11th - Thursday, October 13th.

Parents will have an opportunity to meet with their child's teacher after school in person from 3:30-7pm on either day. Scheduling forms will need to be returned to the school office by October 5th. A confirmation of your scheduled day and time will be returned with your child as soon as the schedule is complete. Please be sure to check your child's book bags.

End of the first quarter is October 7th.

Report cards will be handed out at your scheduled Parent Teacher Conference.

Bethlehem families who shop at Kroger are encouraged to Sign up today! Shop at Kroger and help the Bethlehem Lutheran School tuition assistance fund with the **Kroger Community Rewards Program**.

Register online at krogercommunityrewards.com, be sure to have your Kroger Plus card handy and register your card with Bethlehem Lutheran School as your organization for the reward. **The NPO number for Bethlehem is WG595#.**

If you don't have a Kroger Plus card, they are available at the customer service desk.

Members must swipe their registered Kroger Plus card or use the phone number that is related to their registered card when shopping for each purchase to count.

PLAN TO USE SCRIP FOR ALL YOUR SHOPPING NEEDS Parents are encouraged to use the online **"ShopwithScrip"** app to buy and reload gift cards or for orders, contact our Scrip coordinator, **Melissa Price at 260-433-5307**. Over the years, we have been able to financially support the church general fund and participating school families who have applied credits toward their child's tuition.



Help our 7th and 8th graders raise funds for their Washington D.C. class trip!

Please save your newspapers, catalogs, magazines, junk mail, old phone books, office/school papers and hard/soft cover books. Along with cereal type boxes (NO CARDBOARD). Bring your recyclable paper to school and dispose of in our "PaperGator."

The recycling company pays by the ton so the more you feed our Gator, the more funds we can collect!

If you need help with pick up for large amounts, please call the school and we will make arrangements to help you.

Let your family, neighbors, and friends know!

Thank you



First Quarter Chapel Mission Project

Please continue to support the Concordia Seminary Military Project thru October 7th. This project was established to support chaplains of the Lutheran Church—Missouri Synod (LCMS) and other military personnel in theaters of war and their families with prayers, encouragement, and items of support for both their body and, most especially, their life in Christ.

Your Chapel offering is greatly appreciated.

2nd Quarter Chapel Offering Project



Remember Your Offerings

During the 2nd Quarter (October 10-December 21) our school family will be supporting the Northern Wells Food Pantry.

Along with our weekly chapel offerings, we will be collecting different items and there will be a school-wide reward if we reach our collection goals.

October 10- October 26: Canned Goods 150 Cans
 October 27- November 9: Personal Hygiene Items 50 items
 November 10-November 30: Boxed Food 100 items
 December 1- December 21: Paper Products and Snack Foods 100 items



If you have any questions, please contact the school office.

In Him
 The Bethlehem Staff

Principal's Message



Dear Parents,

We are off to a great school year! Midterms are past and we are just a few weeks away from the end of 1st Quarter.

The students are getting settled in and mastering the daily procedures that make school successful for all.

One of those successful skills to keep as part of your routines is dedicated time for school work done at home. I am very familiar with family schedules being pulled between rehearsals, practices, meetings, and clubs. Yet, as Mrs. Meyer and I raised our three children, we worked hard to schedule specific times when they sat down and did their homework.

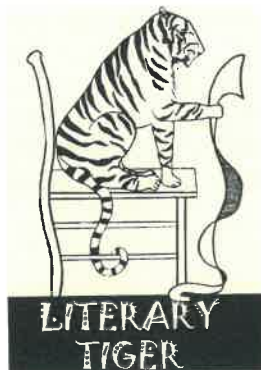
It wasn't the same for all three, as they had different schedules, needs, and personalities. Yet within all that we worked hard to keep as regular a schedule as possible.

Along with that we also worked to limit the amount of screen time the children had, mostly computer/iPad/game screen time. Children need a healthy balance of outside play, indoor play with objects not screens, as well as time just reading a paper book. Too much of any one of these healthy activities can become unhealthy.

It sure is a privilege to live in a time with so much technology available to us. Yet we as parents have to balance that screen time too. The number of times I have looked up from my phone to see my wife on her phone, and we haven't "talked" in over an hour, well. I hereby admit my sin.

Let us all work together to model a balanced work and family life for our children. May God richly bless you and your family.

Peter Meyer
 Principal for the Interim



Tales for Tigers

From Your Bethlehem School Library

*"I'm so glad I live in a world where there are Octobers."
(Anne of Green Gables by L.M. Montgomery)*

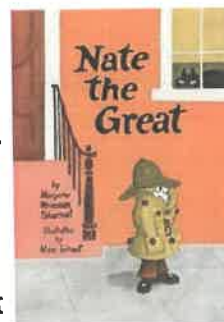
Autumn is a perfect season for reading. Earlier sunsets and crisp air make many crave a cup of tea, a blanket, and a great book. *Anne of Green Gables* would be a good choice, and Anne's enthusiasm for October just might rub off on the reader. Or maybe Bilbo Baggins is your kindred spirit, "He found himself wondering at times, especially in the autumn, about the wild lands, and strange visions of mountains that he had never seen came into his dreams." If so, *The Hobbit* by J.R.R. Tolkien may be your cup of tea. Beautiful new copies of these, and many new books for all reading levels, can be found in the school library!

Mysteries and detective stories also pair perfectly with a cozy blanket, so this month we are going to highlight some of the new and expanded series in our library.

Nate the Great by Marjorie W. Sharmat features a young detective who loves eating pancakes and solving mysteries. Nate himself isn't new to our shelves, but we have added several new volumes to our collection. These are great first detective stories, easy enough for most 2nd grade readers.

Nancy Drew and **The Hardy Boys** are both series that feature young crime-solvers. Your parents (and maybe grandparents) may have enjoyed these stories when they were kids! It's good to start with the first book in each series, but the rest don't have to be read in order. Most readers in 4/5th grade and up will enjoy these collections.

The House of the Baskervilles by Sir Arthur Conan Doyle features one of the most famous detectives of all time, Sherlock Holmes. This novel is probably best for 7/8th grade readers.



Agatha Christie, one of the best selling authors of all time, is sometimes known as "The Queen of Crime." We have added several of her novels to our collection, including one of the most famous detective stories, **Murder on the Orient Express**, which will likely appeal to readers in 6th grade and older.

Your librarians will love helping you find these, or showing off other new books, on your next visit to the library.

Happy Reading!

Book: Harry Potter (series)
Author: J.K. Rowling
Name: Jude
Date: 9-27-22



I like the Harry Potter books because it's a funny/scary adventure series. P.S. Read in order!

Book Review



Ode to Family Pictures

The family pictures

We have someone else take them

That is a professional photographer

Because we need

Everyone in the family to

Be in the picture

But not the dog

Cause the dog

Will not cooperate

With the person

Who is taking the picture.

The picture turns out great.

My mom and dad adore it

But My brother and I do not care.

Cause it is like

Any old photo

For every year.

By Jacob Bultemeier

Ode to a Stormy Night:

By Sarena Wirgau
Grade 8

*Rain falls
Drips down the window
Drips off the gutter
A rumble in the distance
Like Dad, moving the trash can
But Dad is next to me
Lightning cracks
Lighting up the room
Mom reads
Rain falls
As Harry discovers new mysteries
Rain falls
Emma snuggles closer.*

Fin

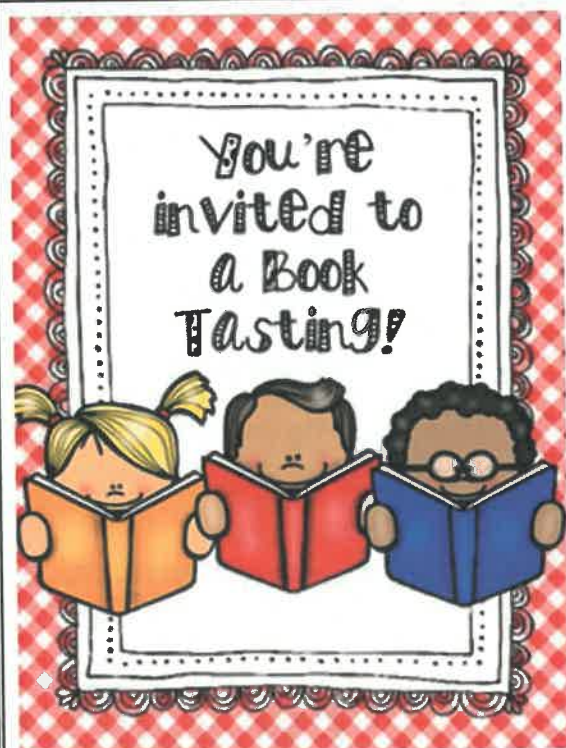
Poem about my Boopy Brother

My brother is so mean
He always hits me
And his friend Makyla
She and I have a war
About booping noses

Every day at recess
I try to boop her nose and she tries to boop my
nose.

She Nearly missed it.
And I win the day if I boop her noses
I also fail miserably.

By: Jacob Bultemeier



Join Us For Our Book Tasting Book Fair!

Check out our awesome selection of delicious books brought to us by Lowry's Books!

Dive into a savory mystery...
Or melt into a sweet sci-fi fantasy...
There will be so many books to sample!

Our Book Fair will be open after church October 9 & 16, and then after school and during Parent/Teacher Conferences October 10-14.

Books make wonderful Christmas presents!

Look what we've been doing...

While some of our 7th and 8th graders spend part of their mornings at Norwell taking related arts classes, we have a couple of students who decided to take a different route. Sarena and Jacob have been learning some life skills several mornings a week since the beginning of school. With the help of Pat Krumma, they made aprons to wear while they learn some cooking skills. They've made Avocado Toast, French Toast, and Blueberry Muffins jus to name a few. They're also learning how to clean up after cooking their masterpieces. Next up will be some more cooking projects and starting some art projects.



Bethlehem Fall Festival

Please join us for fun
and fellowship

**SUNDAY, October 9th
4:00-6:30 pm
BETHLEHEM LUTHERAN CHURCH & SCHOOL
7545 N 650 E OSSIAN, IN**

PIES AND ICE CREAM BY THE LADIES AID!

**Ossian
Fire
Truck**

**Entertainment
5:45-6 pm**

**CARNIVAL
GAMES!**

**Bingo
5-5:30pm**

**FOOD!
Soups (Vegetable,
Chicken Noodle, Chili)
Hot Dogs**

**Games and
Moonwalk
4-5:30**

**KETTLE
CORN!**

Light the Match

A Northeast Indiana Business Matching Gift Challenge

"The bottom line is that the SGO changes lives. It makes it possible for Northeast Indiana children in need to attend loving, faith-based schools where they can be known and chart a new path for their lives. We feel blessed to be able to support this work changing our community for the good." — Nate & Jodi Golm, Leaders Staffing, LLC

Attention Business Donors: Discover the joy of giving through the SGO program.

Starting October 1, 2022, any gift from a new donor with a business, including sole proprietorships, LLCs, and incorporated businesses, to one of the 22 schools in our family of schools in Northeast Indiana would be matched \$1 for \$1 up to \$10,000 per business for an accumulated total of \$100,000. Gifts from lapsed donors (3 or more years since their last gift) will also be considered for this match. This is a first-received, first-matched basis. Challenge ends December 31, 2022.

WHY Give: Receive a 50% credit to reduce or eliminate your Indiana State taxes.

HOW to Give: Donate to The Lutheran SGO via check, card, stock, PayPal or Crypto.

Your support will ensure that families in Northeast Indiana will receive a quality, Christian education.



Matching Gift Challenge is open to all new donors with a NE Indiana business, including sole proprietorships, LLCs, and incorporated businesses.



All new donor business gifts would be matched up to \$10,000 per business for an accumulated total of \$100,000.



Business donors can choose to fund scholarships for students to attend 22 Christian elementary and high schools in Northeast Indiana that are part of The Lutheran SGO of Indiana family of schools.



Have your CFO contact us at:

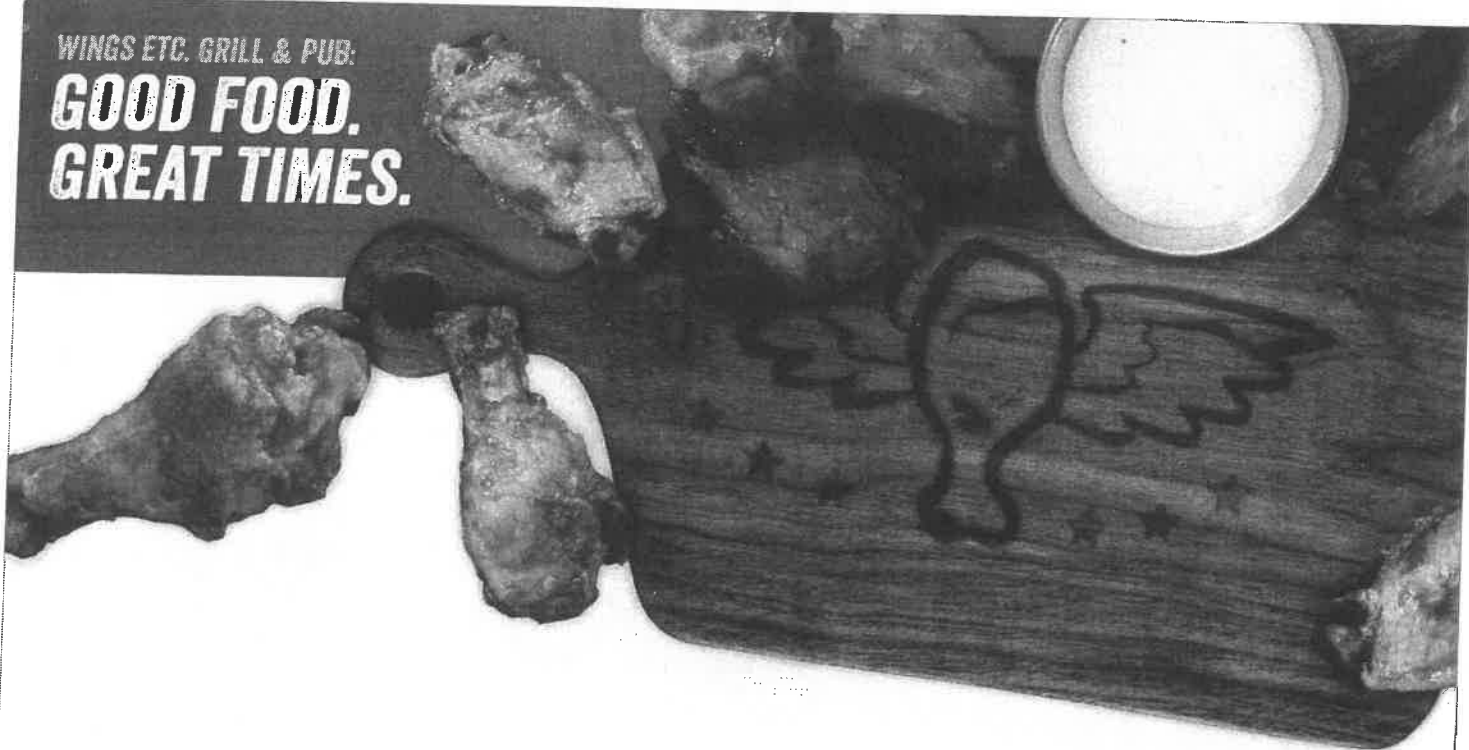
Call: 260-203-4509. Email: info@LutheranSGO.org

Visit: LutheranSGO.org/match or, scan the QR code to the left for more information and links to eligible schools.



WINGS ETC. GRILL & PUB:

**GOOD FOOD.
GREAT TIMES.**



DINE TO DONATE

Wings Etc. Bluffton is donating **15%** of all pre-tax food & soft drink sales on **Tuesday, November 29th** to **Bethlehem Lutheran School Washington, D.C. Trip!**

Come to Wings Etc. at **657 North Main St.**

Bluffton, IN. between **11am** and **11pm.**

Bring this flyer in and show it to your server
so you can support the cause. Thanks!



Point your smartphone camera at
me to find our menu, maps, & more!



Use code **D2D0025** at checkout when ordering online at togo.wingsetc.com

Valid only at participating restaurant listed above. Ticket valid only for this event. ©2022 Wings Etc., Inc. Franchises independently owned and operated.

Wings Etc. is a registered trademark of Wings Etc., Inc. ©2022 Wings Etc., Inc. All rights reserved. 

BRYCE BOWMAN BENEFIT

Featuring Nelson's Chicken & Silent Auction

SATURDAY, OCTOBER 15 | 3:00P - 6:00P

New Hope Lutheran Church
8824 N. SR 1, Ossian, IN 46777

Dine-In or Carry-Out

1/2 Chicken Dinner

\$13 in Advance

\$15 at the Door

Includes chicken, pit potatoes,
applesauce, dessert, and a roll.

1/2 Chicken

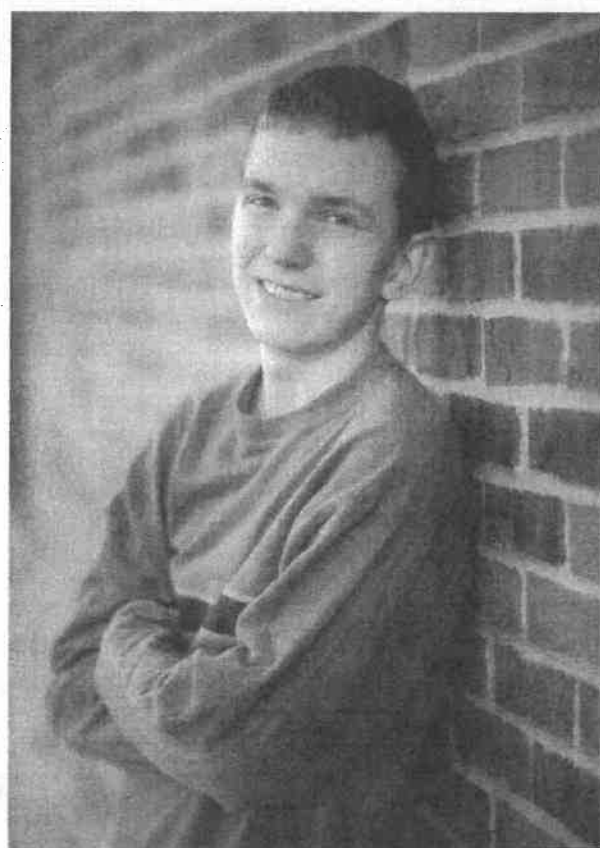
\$9 in Advance

\$10 at the Door

Bryce was diagnosed with Hodgkin's Lymphoma in April 2021 and received chemo and Proton Radiation throughout the year. In January 2022, it became necessary for Bryce to resume chemo treatments along with a stem cell transplant as the cancer was shrinking but would not disappear. Stem cell harvest was completed in May with additional chemo treatments in June and July. Bryce will remain at Riley during August and September to receive chemo and the stem cell transplant.

Through all of this, Bryce continued school remotely and in person. He graduated from Norwell in June. He also participated in and attended FIRST Robotics competitions and completed 4-H projects with two Reserve Champion awards.

Bryce's future plans are to attend Ivy Tech for computer software.



Bethlehem Lutheran School Silent Auction and Gala Midnight at the Masquerade Murder Mystery

Entertainment presented by



Entertainment sponsored by

3 RIVERS®

Join us for a night of mystery, mayhem, and murder...
all while raising money for our wonderful school!

November 5, 2022

at The Lighted Gardens ~ 10794 St Rt 1, Ossian, IN

Doors open at 5:30pm ~ Auction begins at 6:00pm ~ Dinner served at 6:30pm

Ticket Prices

\$60 individual ~ \$110 couple ~ \$440 table of 8 (guaranteed seated together)

If purchasing a table, please have everyone at your table fill out a registration.

Last day to purchase tickets is October 23rd! ~ Seating is limited!

Please fill out the section below and return with payment. Thank you!

Silent Auction Registration 2022

Name(s): _____

Address: _____

City, State, & Zip: _____

Phone number: _____ Number of tickets: _____

Email Address: _____

Bethlehem Lutheran School
Silent Auction and Gala
Midnight at the Masquerade Murder Mystery

Buy a mask for \$5
to wear at the auction
for a chance to win
\$100 to bid on an
auction item!



Masks will be ready for you to pick up and wear, if you choose, when you arrive at the auction.

The drawing will be held before the auction begins, so masks need to be purchased before the day of the auction.

Thank you!

News Notes to Parents

October 2022

Explore the Great Outdoors with Your Child

Fall is a perfect time of year to get outside and explore. Doing so helps children reach their physical activity recommendations and also allows for many learning opportunities. In today's entertainment-driven world, exploring the outdoors is an opportunity for children to actively engage in learning. Here are a few steps you can take to guide children's exploration of the great outdoors.

Explore safely. Join your children in the fun and keep an eye on them. Dress appropriately and teach your child the basic safety rules of the outdoors.

Let children choose what to explore. Let children explore, and see what they do on their own without offering suggestions. Do they run? Build? Climb? Even an activity as simple as digging leads to exploration. Children learn how to dig, the way soil feels, the angle of the slope before loose dirt slides back down, and the difference between dry and wet soil.

Ask open-ended questions. Ask about their discoveries. Ask open-ended questions they can understand and answer with their observations. "What did you find? Oh, a bug? What does it look like? How does it move?" You do not have to know all the answers to children's questions. Discuss what you see—the shape of leaves, the color of the soil, the movement of the grasses. The more your child observes, the more the world around him will make sense. Discovering how to learn through observation is important.

Touch, lift, look under. Children need to touch the natural world to more fully understand it. In some cases, gently touching an object with one finger may be helpful. For example, gently nudge a frog or a grasshopper to help a child learn how animals move. When possible, examine an object from all sides.

Guide children to draw conclusions from the observations they've made. The best learning occurs when children come to conclusions for themselves. It would be easy to draw on your own knowledge to say, "It's fall now. See, the leaves are red. Remember that they used to be green?" Try asking questions or describing what you see, feel, hear, and smell. This modeling will help your child learn to use her own senses when exploring.

Source: <https://www.naeyc.org/our-work/families/explore-great-outdoors>



What is a FICO® Credit Score?

Do you know how to calculate your FICO® score? The Fair Isaac Corporation (FICO) developed the method to calculate a credit score. Your credit score is determined by the following:

- 10% - Types of Credit – mortgages, car loans, credit cards, any type of credit issued to you.
- 10% - New Credit Applications – the number of credit application historically. Are you always opening store credit to receive the initial discount? This could be hurting your credit score.
- 15% - Credit History – your oldest account – Borrower with more established credit is viewed less risky to lenders.
- 30% - Current debts – your total credit utilization. **Credit utilization** ratio is the amount you owe across all your **credit** compared to your total available **credit**, expressed as a percentage—keep it less than 30%.
- And the big one! 35% - Payment History – on time payment history! This is the easiest way to improve your credit score, pay bills on time.



Source: Consumer Financial Protection Bureau www.consumerfinance.gov

Apple Cinnamon Baked Oatmeal Recipe

Ingredients

- | | |
|--|----------------------------------|
| 1½ cups fat-free milk or soy milk | ½ teaspoon cinnamon |
| ½ cup packed brown sugar | 2 cups rolled oats (not instant) |
| ½ cup egg substitute or egg whites | 1 teaspoon baking powder |
| 1 tablespoon melted trans-fat-free margarine | 1½ cups chopped apples |

Directions

Before you begin: Wash your hands.

1. Preheat oven to 350°F (176°C).
2. In a small bowl mix the milk, brown sugar, egg substitute/whites, margarine and cinnamon.
3. In a larger bowl combine the oats and the baking powder.
4. Pour the wet mixture into the bowl with the oats; add the apples and stir to combine.
5. Spoon the mixture into a 8-by-8-inch pan coated with cooking spray and bake for 30 to 40 minutes, until top is firm and a toothpick comes out clean in the center.

Nutrition Information

Serving size: 1 square; Serves 9. Calories: 160; Total fat: 3g; Saturated fat: < 1g; Sodium: 80mg; Total Carbohydrate: 30g; Dietary Fiber: 3g; Sugars: 18g; Protein 4g; Vitamin A: 248 IU; Vitamin C: 1.5 mg; Calcium: 56mg.

Source: www.kidseatright.org

If you have comments or questions, contact:

Molly Hoag, Purdue Extension—HHS Educator

1240 4-H Park Road, Bluffton, IN 46714

Email: mhoag@purdue.edu

Website: www.extension.purdue.edu/wells

Phone: 260-824-6412

It is the policy of the Purdue University Cooperative Extension Service that all persons have equal opportunity and access to its educational programs, services, activities and facilities without regard to race, religion, color, sex, age, national origin or ancestry, marital status, parental status, sexual orientation, disability or status as a veteran.

Purdue University is an Affirmative Action institution. This material may be available in alternative formats.



The everyday way to make an impact every day

Join us in raising money for our organization simply by using gift cards where you're already shopping. It's easy, rewarding, and fits perfectly into your busy life.

A family can
earn over
\$1,000
per year

Shop and earn with over 750 top brands

- Gas
- Grocery
- Clothing
- Dining
- Entertainment
- Home Improvement
- Travel
- Retail



See all available brands at ShopWithScrip.com

“Scrip is different because we aren't selling stuff that people don't want or need and we're not spending any extra money.”

Nicole, Byesville, OH

How it works



Buy physical gift cards, eGift cards, and reloadable gift cards at face value on ShopWithScrip.com or the mobile website, MyScripWallet.com.



Easily pay online and earn a rebate between 2% and 16% that immediately goes toward funding for our organization.



Use your gift cards for your everyday shopping.

Start earning today

1. Join our program by creating an account on MyScripWallet.com or ShopWithScrip.com.
2. Enter our organization's enrollment code: **43ALE7851441**
3. Link your bank account to enroll in online payments and place your first order.


Have a question? Contact our coordinator at: Melissa 433-5307

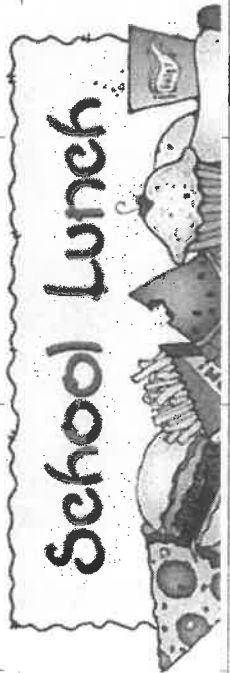


Bethlehem Lutheran School

Lunch Menu

October 2022

Sun	Mon	Tue	Wed	Thu	Fri	Sat
2	3 Fried Chicken Leg Mashed Potatoes Carrots Blueberries Dinner Roll	4 Hamburger Baked Beans French Fries Peaches	5 Quesadilla Salad Salsa Corn Pineapple	6 Chicken Nuggets Peas Fresh Carrots Juice Soft Pretzel	7 Pizza Salad Broccoli Peaches Cookie	8
9	10 Mac & Cheese Green Beans Carrots Mixed Berry Cup Biscuit Stick	11 Nachos w/meat and cheese Salsa Refried Beans Pineapple	12 Pancake Sauce Bites Hash Browns Fresh Veggies Juice	13 Bosco Sticks Marinara Cup Salad Peas Peaches	14 Ham and Cheese Sandwich Chips Carrots & Celery Sidekick	15
16	17	18	19	20	21	22
						
23	24 Orange Chicken Rice Broccoli Carrots Mandarin Oranges	25 Pizza Salad Corn Strawberries	26 Chicken & Noodles Mashed Potatoes Green Beans Fruit Choice Dinner Roll	27 Pancakes Sausage Patty Hash Browns Fresh Veggies Juice	28 Chicken Patty Sandwich Fresh Carrots Baked Beans Grapes Cookie	29
30	31 Hot Dog Carrot Stix French Fries Blueberries Fruit Snacks					



School Lunch