



## TIGER TALES

"SENT TO SERVE"




Thank you to everyone for coming out to our annual PTL Parents vs Kids event. The 2020-21 Bethlehem basketball players were all recognized for their efforts and contribution to the teams. Leah Werling, in 8th grade was recognized with a special goodie bag and thanked for her Bethlehem athletic accomplishments. Thank you to our volunteer coaches and to our Athletic Director, Jay Werling for an interesting year!

## CALENDAR

April 1 Maundy Thursday  
 April 2 Good Friday—NO School  
 April 4 Easter Sunday  
 April 5 NO School  
 April 13 Board of Education Meeting  
 April 23 Grandparents Day  
     Early dismissal  
 April 24 Church Fish Fry  
 April 26 PTL Meeting

## APRIL 2021

Sun	Mon	Tue	Wed	Thu	Fri	Sat
				1	2	3
4	5	6	7	8	9	10
11	12	13	14	15	16	17
18	19	20	21	22	23	24
25	26	27	28	29	30	

## BIRTHDAYS

April 6 Emma Wirgau  
 April 10 Bailey Meyer  
 April 16 Jonah Bultemeier  
 April 30 Mr. Meyer



### CHAPEL OFFERING SERVICE PROJECT

**For our 4th quarter, we will be supporting the following missionaries:**

Rev. James and Deaconess Christel Neuendorf serve the Lord through The Lutheran Church—Missouri Synod (LCMS) in Puerto Rico. Both have served as missionaries in this region since 2008, based in Panama and then in the Dominican Republic.

James serves as a church planter and pastor in the city of Ponce, Puerto Rico. His focus is to establish a strong Lutheran presence in this city which will boldly proclaim the Gospel and meet the physical and spiritual needs of a community that is hungry for the Gospel and for hope. As pastor, James engages daily with Ponce community members to share in their lives and to bring them into the life-giving presence of Jesus in Word and Sacrament. He is also working to create a generation of local leaders and well-grounded laity and future pastors who will be able to continue to spread the Gospel throughout Puerto Rico, around the Latin America region, and the world.

As a deaconess, Christel is involved in the long-term disaster relief efforts at the mission's various Casa de Amparo y Respuesta al Desastre (House of Refuge and Disaster Response) mercy houses. From these places, LCMS missionaries and Puerto Rican Lutherans offer food, water and other basic necessities to community members affected by the hurricane. She is also engaged in assessing needs in the community and coordinating efforts to meet those needs as a congregation and mission.

James and Christel both grew up in Michigan. James, as a pastor's son, has called many places "home," most recently Ann Arbor, Mich., where he also attended Concordia University and met Christel. He graduated with a bachelor's degree in religious studies and earned his Master of Divinity at Concordia Theological Seminary, Fort Wayne, Ind. Christel is a native of Flushing, Mich. She also graduated from Concordia University, Ann Arbor, Mich., with a degree in business and received her deaconess certificate from Concordia Theological Seminary, Fort Wayne, Ind.

This is the student portal Mr. Meyer maintains that gives the students quick access to a lot of our programs. Parents may also access this site to see what is going on in grades 3 - 8 grades. <https://sites.google.com/bethlsossian.org/bethlehemstudentportal/home>

#### PRIVACY NOTICE

We all love to share pictures of our child's school activities and accomplishments. However, we have to be very careful where those pictures are posted and respect that other students might also be in the picture. Parents please remember to respect do not post pictures that may have students in them other than your own child. If you have any questions or concerns, please contact the school office before posting anything. Thank you



Weather permitting the students will be going outside for recess time. Please have your child dress appropriately for the weather.

**Potential delays and cancellations for Bethlehem will follow the same as Northern Wells Community Schools.** Sign up for text alerts at [www.wane.com/text-alerts](http://www.wane.com/text-alerts).

Bethlehem will be **closed** on Friday, April 2 and Monday, April 5 due to Easter Break



**April / May Birthday Pizza lunch with the Principal**

**Thursday, April 8th**

**Students celebrating birthdays:**

**Emma Wirgau, Bailey Meyer, Jonah Bultemeier**

**Jude Wirgau, Ginny Wirgau, Paizley Price**



**Grandparent's Day-** this is such a wonderful event every year. Our grandparents and special visitors that day are pampered with chapel, a special lunch, and entertainment. This event is always a big hit, but takes lots of planning and volunteer help. We are asking ahead of time to please consider volunteering to help us during this event which is on Friday, April 23<sup>d</sup> to make our grandparents/visitors feel special and loved.

**Please plan to attend the PTL meeting on Monday, April 26th at 6:00 p.m.**

With Gradelink you can stay updated on your child's academic progress at school and get information on upcoming assignments such as assignment descriptions and due dates. The following information is available to you when you **log in to Gradelink:**

- Current Grade in each class
- Current GPA for the term, if applicable
- Descriptions, Grades, and Teacher Comments for graded assignments
- Descriptions and Due Dates for upcoming assignments
- Assignment handouts or documents (attachments)
- Email Alerts you can configure for grades and attendance
- Attendance Information
- Transcript Information, if applicable
- Billing Information, if applicable



To access this information go to **[www.gradelink.com](http://www.gradelink.com)** and click on the green Log In button.

**PLEASE CALL THE SCHOOL OFFICE IF YOU NEED ANY HELP**

## Resurrection Miracle

*"But if there is no resurrection of the dead, then not even Christ has been raised. And if Christ has not been raised, then our preaching is in vain and your faith is in vain." - 1 Corinthians 15:13-14*

Do you believe in miracles?

Before you answer that question, let me clarify what I mean by miracle. A miracle is an act of God - using or exceeding the laws of nature - to perform humanly impossible feats in order to reveal His power and glorify Himself. In the last century people have become more skeptical about the possibility, much less the reality, of miracles. Is it really that important for people to believe in miracles? The answer is yes. It is of utmost importance that we all believe in both the possibility and the reality of the miraculous.

If miracles are impossible then belief in Jesus is a waste of time. Jesus Christ is defined by the miraculous. His virgin birth, sinless life, resurrection from the dead, not to mention that He claimed to be God in the flesh (the incarnation). If you believe in Jesus, then you most definitely must believe in miracles. The resurrection of Christ is both proof of and the result of the incarnation. If Jesus Christ was God in the flesh, then death could not have conquered Him and the grave couldn't have held Him.

Think about it this way: Is a god worth worshiping if he cannot do anything other than what a mortal human can do? Many people attempt to use science as proof that miracles do not exist. The truth is, however, that you cannot separate science, history and theology. Is the resurrection of Christ a scientific, historical or theological truth? The answer is it is all three. Scientifically a resurrected body deals with anatomy, biology, physics and chemistry. Historically the resurrection has more proof that it happened than any other miracles in the history of the world. And theologically, Christianity does not exist apart from the resurrection of Jesus Christ.

So, I ask again: Do you believe in miracles? Not random supernatural occurrences, but purposeful marvelous acts by a wise and all-powerful God?

Due to the COVID -19 restrictions on gatherings, the Bethlehem Lutheran School Black Tie and Blue Jeans Silent Auction and Gala has been postponed. A proposed rescheduled date will be November 6, 2021. If you would like to help volunteer for this event, please contact Melissa Price or Jennifer Bultemeier. Stay tuned for more information. Thank you

Shop at Kroger and help Bethlehem Lutheran School tuition assistance fund with the Kroger Community Rewards Program.

Register online at [krogercommunityrewards.com](http://krogercommunityrewards.com), be sure to have your Kroger Plus card handy and register your card with Bethlehem Lutheran School as your organization for the reward. The NPO number for Bethlehem is WG595#.

If you don't have a Kroger Plus card, they are available at the customer service desk. Members must swipe their registered Kroger Plus card or use the phone number that is related to their registered card when shopping for each purchase to count.

**PLAN TO USE SCRIP FOR ALL YOUR SHOPPING NEEDS and at the same time reduce your child's tuition fees for next year! Scrip orders can be placed on Mondays. Order forms are available in this newsletter or from the school office. Please contact our Scrip coordinator, Melissa Price at 260-433-5307 if you would have any questions. Thank you**

### Keep On Clipping... NEW INFORMATION

Box Tops receipts, Spirit of America labels, and Tyson labels are all worth money for our school. To redeem Box Top products, you will need to download the Box Tops app on your phone and then scan each receipt that contains your Box Tops products. The Spirit of America and Tyson labels can still be turned in to school. Since Community Market has closed in our area, we will no longer be collecting receipts from them. For questions, contact Jenny Todd our label coordinator.



For questions, contact Jenny Todd our label coordinator,  
**KEEP ON CLIPPING and SCANNING!**

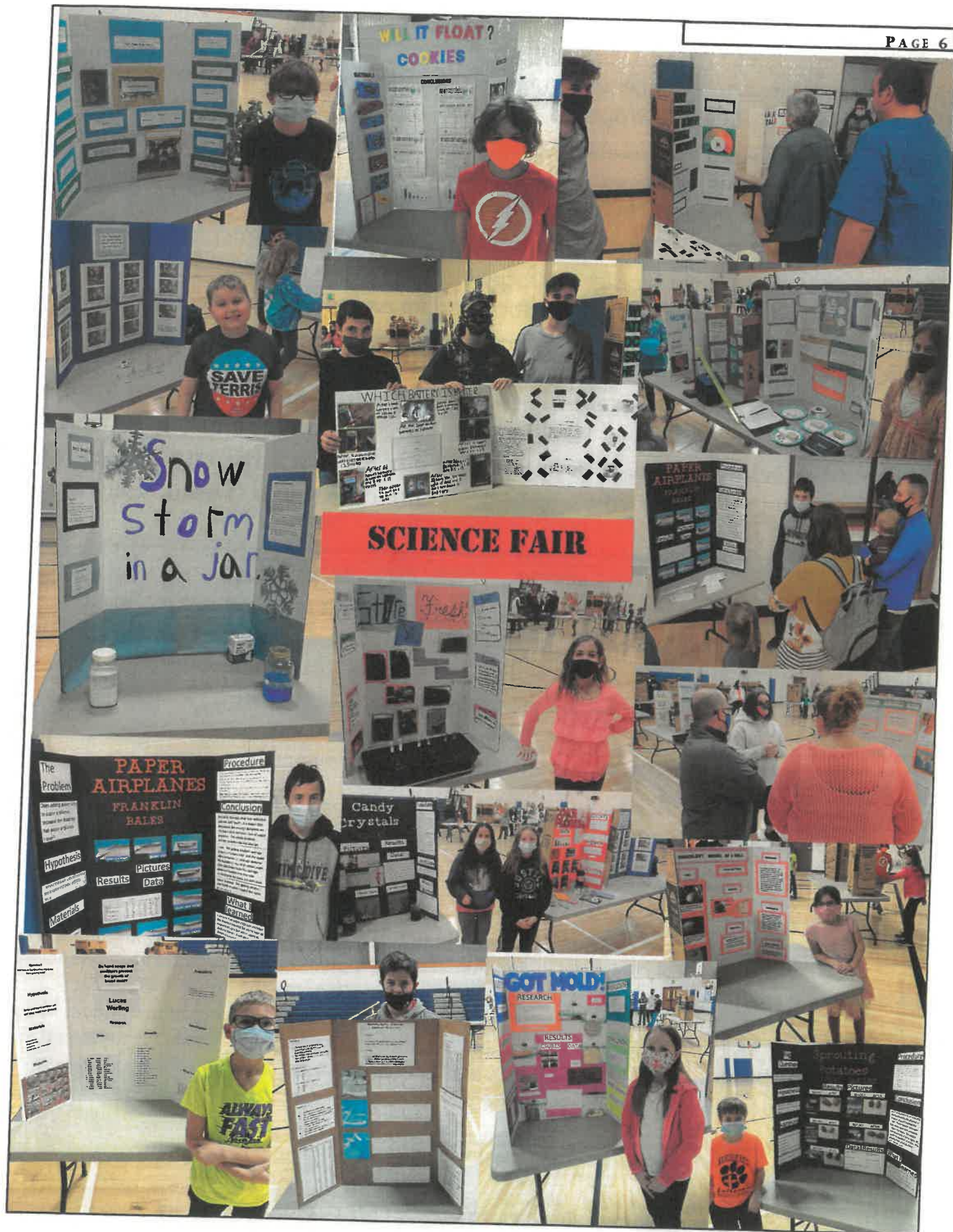


When possible dangers arise on school-issued accounts, Bark for Schools sends us alerts so we can address the situation in a timely manner. These alerts also give us insights that help us promote the wellness of the entire student body. Learn more about Bark for Schools — including their commitment to student privacy at <https://www.bark.us/schools> If you have additional questions, please contact Mr. Meyer at [pmeyer@bethlssossian.org](mailto:pmeyer@bethlssossian.org). Thank you for your support as we strive to help keep our students safe online.

Best wishes,

Peter Meyer, Teacher, Google Suite for Education Administrator





FEBRUARY 2021

Hola amigos iv Bean Praying

note from LCMS Missionaries, James & Christel Neuendorf

### Hola, amigos, iv Bean Praying.

A while back we received a mailing of drawings and notes from one of our supporting congregations in the States. These are always entertaining to look through and encouraging as we remember the many congregations and even kids who are supporting our ministry with their gifts and their prayers.

One of these drawings was hanging on the fridge at our mission office in Ponce and caught my eye, "Hola amigos iv bean praying" it says. Boy, haven't we all! The last few weeks have been wonderful and challenging for reasons we have been waiting for since we first arrived on the island. After a long time of planting and cultivating, we decided it was time to invite our first group of people with whom we have been building relationships and inviting to activities to begin their confirmation classes to be a part of the congregation here. I printed my materials and set up for class and waited to see if anyone would really come. Of the ten who were personally selected and invited, 6 signed up to start the class.

From the minute that the classes began, the resistance from the world and the devil started, and a spiritual tug of war has begun over these first fruits of our ministry and the sheep of the Lord's hand here in Ponce. I won't go into specifics, but it is clear that the devil does not want this class to happen.

The class will be 4 months long (Pentecost is our target confirmation date), and even at that it feels as though we are going through the material. The students are committed, but as expected they have been facing many challenges and doubts. Each day I send them each an encouraging message, a bible verse, and pray for them by name. Students have been sick, have had family issues that pull them aside, and there is a constant fight to go on.

### Prayers:

- Continued visitation
- Confirmation Class
- Thanksgiving for career calls and solemn appointments for Ruth Maita and Ashley Lehr!

One family, a mother and son, decided last week that they didn't want to continue. Although it is my first formal class in Puerto Rico, I've taught confirmation in church plants before and it is always like this, but nevertheless it is hard. It was after losing these students that I saw the message on the fridge. "Amigos, iv bean praying." It struck me because it was not only encouraging, but it reminded me of precisely the first thing that I told the confirmation students on the first day;





The model of true discipleship, as Jesus teaches us, is the attitude and faith of children. Here we thinking of ourselves as fighting with the devil over souls, the dragon of hell who seeks to devour the world and crush the church between his claws, but it pleases our Father in Heaven to see him defeated by the faith and attitude of children. In fact, we aren't fighting the devil at all, but the Lord fights on our behalf. We do not defeat the evil one because we are strong enough, or fight hard enough, but because we immediately run to the One who will defeat the devil for us. It is faith that drives back the devil. We pray, and we plead and trust in His mercy and grace and power to protect His sheep and bring them to quiet waters and lush pastures. The Lord is pleased to crush the head of the serpent under the feet of little children, beginning and by the power of His Son.

Each day that one of these 4 remaining confirmands comes to class, sits down to talk about the Word of God with their new pastor, listens to the Word preached and taught, sings the songs that they are learning for the first time, it is all a miracle. Children have "bean praying" for the devil to be defeated and for the lost to come to faith, and as my students will soon learn in their catechism, their dear Father listens to His dear children. So keep praying!



Every other month, we as a congregation have an opportunity to gather food and assemble for the seniors in our community. There were three places we were making connections with prior to the earthquakes but are still under construction. However, there is another independent living community that is two blocks from our church that was damaged too (you can still see large cracks) but still inhabitable. As a congregation and team we were able to bring the residents a few grocery bags and begin to get to know the people and the administration. We are praying for more opportunities to visit and provide some activities for them.

#### LCMS

Adopt Us as your missionaries by visiting  
[www.lcms.org/Neuendorf](http://www.lcms.org/Neuendorf)  
 A check can be made out to LCMS  
 with "A16166-69181" in the memo and sent to:

#### LCMS

P.O. Box 66861  
 St. Louis, MO 63166-6861



For Lent this year, we mailed out the CPTLN (Lutheran Hour) Lenten devotional to around 150 people that we have made contact with over the last year. We added a visual faith component of prayer spaces (Lenten Path). Ruth and I then used the Lenten Path as a guide for our online Friday art classes on Facebook.

This month, CPTLN Director, Yaritza Rosa, and Evangelist William were kind enough to have Kate Philips (Dominican Deaconess Intern) and myself on their bi-weekly radio program, Café con Fe. This radio show has been a great opportunity to reach out to the community of Mayaguez and provide them with spiritual care resources.



#### Mission Central

Adopt Us as your missionaries by visiting  
[www.missioncentral.us/Neuendorf](http://www.missioncentral.us/Neuendorf)  
 A check can be made out to Mission Central  
 with "A16166-69181" in the memo and sent to:

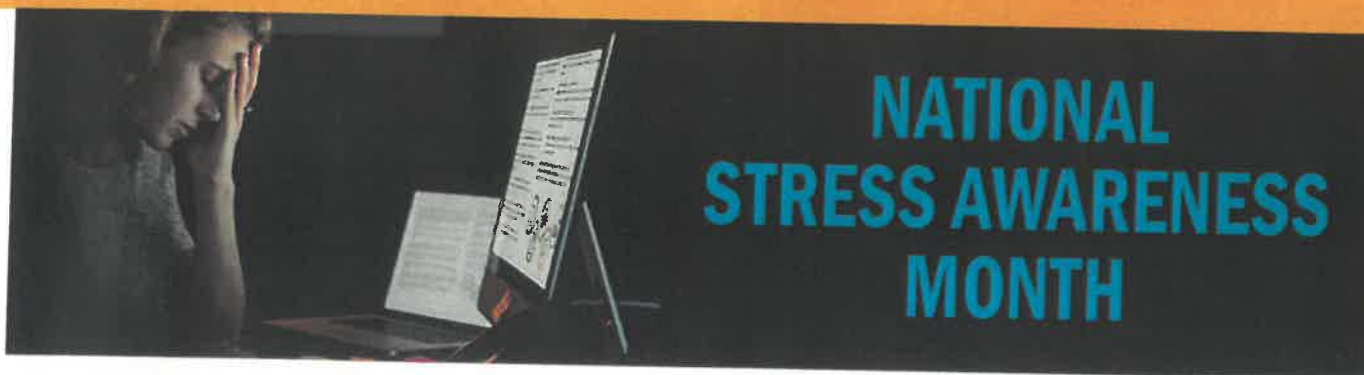
#### Mission Central

40718 HWY E16  
 Mapleton, IA 51034



# NEWS NOTES TO PARENTS

A PURDUE UNIVERSITY EXTENSION NEWSLETTER FOR PARENTS OF PRESCHOOLERS



**S**tress Awareness Month is an annual designation observed in April. Have you ever been in a situation that was a little (or a lot) overwhelming, you had deadlines approaching and a mile-long to do list, and you were just in way over your head? Well, you're definitely not alone. Everyone feels stressed from time to time, especially as we get older and the responsibilities really pile onto our plate. The thing about stress is, a little bit of it isn't necessarily a bad thing, but too much can be detrimental to our emotional and physical health. Learning to find that healthy balance is the best way to live a productive, happy life.

A small amount of stress once in a while can be good, because it means you're working hard and you care about what you're doing. If you were never stressed, that would probably mean you're living a lethargic lifestyle without a whole lot of work involved.

However, too much stress doesn't allow us to think straight, and is overbearing and counter-productive. Prolonged stress even leads to real physical problems and can cause strokes, IBS, ulcers, diabetes, muscle and joint pain, miscarriages, and many more.

This month, recognize the difference between good and bad stress and try to find your happy place within the madness.

## HOW TO OBSERVE

This month, we are all challenged to keep our stress levels low, and our peace levels high. Here are some great ways to keep your mind clear and de-stress if you find yourself getting too overwhelmed.

**Exercise.** You've probably heard this one before, and even though it's probably not exactly what you want to do when you're feeling stressed (because laying on the couch and watching movies sounds more appealing), exercising gets

endorphins pumping through your brain, which triggers a happy feeling. Exercise lowers your body's stress hormones like cortisol, and releases chemicals that make you feel more at peace.

**Natural supplements** can help you feel more at ease. Remedies like lemon balm, omega-3 fatty acids, ashwagandha, green tea, and essential oils are very helpful.

**Light a candle,** turn on the oil diffuser, play some soothing music and dim the lights. Take a deep breath and count your blessings.

**Caffeine intake reduction** can help (even though it's tough to kick the coffee!) because caffeine tends to make us jittery, which can cause stress and anxiety.

**Spend time laughing** with friends and family. Let yourself have a good time and get your mind off the busyness of the real world.

Source: <https://bit.ly/3lKhujn>

# TEACH YOUR CHILDREN TO SAVE

A life lesson most of us hope to entrench in our children is that you get out what you put in – into life, into relationships, into your career, into yourself and into your financial future.

Here are some ways to teach your children about saving:

**Ignite their entrepreneurial spirit—** Every child would love to earn their own money, so help them by brainstorming a couple of ideas they can put into action from home, on the internet or even in your driveway!

Why not start with a simple garage sale of their old books, toys, clothes and sports gear?

**Explain the difference between saving and investing—**Keep it simple. Investing may sound complicated, but it really isn't. Explain that investing is about making the money they have saved work for them to make even more money.

**Lead by example—**Talk to them about your own investments and show them how you are reaping the rewards of making the right decisions with your money. You can't invest without money, so also be a good example of someone who cares enough about their income to put a portion of it away each month for a rainy day.

**Help them to set financial goals—** They should understand that the

money being saved or invested is for a specific purpose and to reap the reward is worth the wait.

**Create a place for them to save—**This could be a savings jar for the younger kiddos. Having their own "bank account" provides a great sense of independence and enables the child to track their journey to achieving their financial goals.

There is more to teaching children about money than just giving them pocket change. Teaching your children to save, and the value of money is one of the most important lessons for them to learn! Lessons about money should start at a preschool age. As soon as children can count, introduce them to money. Take an active role because repetition and observing others are the two main methods they learn by!

Source: Business Tech

## Peanut Butter, Krispies & Chocolate Sandwich

This crispy, chocolaty sandwich is like a Saturday-morning breakfast without the bowl.

**TOTAL TIME:** Prep 5 minutes

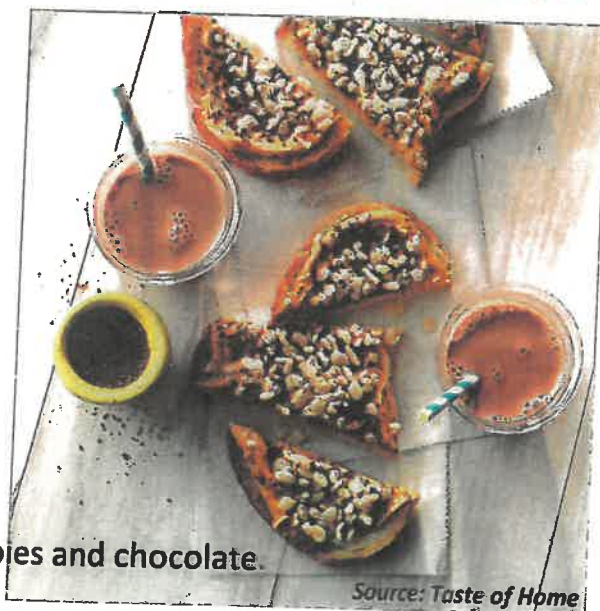
**YIELD:** 1 Serving

### INGREDIENTS

- 1 tbsp creamy peanut butter
- 1 slice crusty white bread
- 2 tbsp Rice Krispies
- 1 tsp grated dark chocolate candy bar

### DIRECTIONS

Spread peanut butter over bread. Top with Rice Krispies and chocolate.



Source: Taste of Home

**News Notes To Parents** newsletter is a product of Purdue Extension. If you have comments or need information, contact:

**MOLLY HOAG**, HHS Educator

Email | [mhoag@purdue.edu](mailto:mhoag@purdue.edu)

Phone | 260-824-6412

The Extension Office is located at:

1240 4-H Park Road, Bluffton, IN 46714

It is the policy of the Purdue University Cooperative Extension Service that all persons have equal opportunity and access to its educational programs, services, activities and facilities without regard to race, religion, color, sex, age, national origin or ancestry, marital status, parental status, sexual orientation, disability or status as a veteran. Purdue University is an Affirmative Action Institution. This material may be available in alternative formats.



Bethlehem Lutheran Church

Vacation Bible School

June 21-24, 2021

9 a.m.-12:00 p.m.



# STUDENT REGISTRATION FORM

**Director Contact:** Deaconess Wendy Boehm, (260) 415-8526 or [wmeyer.boehm@gmail.com](mailto:wmeyer.boehm@gmail.com)

(Please Print)

**Child's First and Last Name:** \_\_\_\_\_

**Nickname:** \_\_\_\_\_ **Gender:** \_\_\_\_\_

**Grade child will enter this fall:** \_\_\_\_\_ **School:** \_\_\_\_\_

**Address:** \_\_\_\_\_ **Home church:** \_\_\_\_\_

**City:** \_\_\_\_\_ **State:** \_\_\_\_\_ **Zip:** \_\_\_\_\_

**Contact Email Address:** \_\_\_\_\_

**T-Shirt Size (Youth, Register by June 1<sup>st</sup>):** \_\_\_\_\_

**Allergies:** \_\_\_\_\_

**Medical Issues or Special Needs:** \_\_\_\_\_

**Parent/Guardian First and Last Name:** \_\_\_\_\_

**Home Phone:** \_\_\_\_\_ **Cell Phone:** \_\_\_\_\_

**Emergency Contact First and Last Name:** \_\_\_\_\_

**Emergency Contact Phone:** \_\_\_\_\_

**Alternate Pickup First and Last Name:** \_\_\_\_\_

**Alternate Pickup Phone:** \_\_\_\_\_

**Medical Release:** I understand that the VBS staff will contact emergency services in the event of a significant injury and all expenses for such emergency will be paid by me.

**Photo Release:** I grant Bethlehem Lutheran Church permission to copyright and use photographs/videos taken at VBS of the minor designated above for any purpose lawful.

**Permission to Attend:** I give permission for my child (named above) to attend the VBS listed above. I understand that the information I give for this registration will only be used by the VBS hosting church.

Bethlehem Lutheran Church • 6514 E 750 N. • Ossian, IN • [bethlehemossian.org](http://bethlehemossian.org)



# Dan's Fish & Tenderloin

## Carry-Out Only

**Date:** Saturday, April 24, 2021

**Time:** 4:30-7:30

**\* Place:** Lighted Gardens

10794 N St. Rd 1, Ossian

**Menu:** Fish & Tenderloin, Baked Potato, Green Beans,  
Applesauce, Roll and Dessert

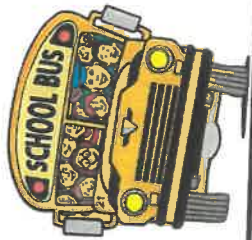
**Tickets:** \$12.00

**Contact:** Cheryl Louison 260-414-5526/clouison@ymail.com  
Pat Meyer 260-227-0400/spmeyer1982@gmail.com



Sponsored By: Bethlehem Lutheran Church, Ossian  
Proceeds to Benefit: Feeding Tomorrow's Future Today Back-Pack Program &  
Bethlehem Lutheran Church





# Bethlehem Lutheran School

## Lunch Menu

### April 2021



Sun	Mon	Tue	Wed	Thu	Fri	Sat
<div>4 Easter Sunday</div>	<div>5</div> <div>NO SCHOOL</div>	<div>6 Taco Stick</div> <div>Refried Beans</div> <div>Lettuce &amp; Salsa</div> <div>Mixed Berry Cup</div>	<div>7 French Toast</div> <div>Sausage</div> <div>Tri-Tater</div> <div>Veggy Choice</div> <div>Peaches</div>	<div>1 Hot Dog</div> <div>Potato Wedges</div> <div>Veggy Choice</div> <div>Pineapple</div> <div>Easter Cookie</div>	<div>2 Good Friday</div> <div>NO SCHOOL</div>	<div>3</div>
<div>11</div>	<div>12 Chicken Patty</div> <div>Potato Smiles</div> <div>Baked Beans</div> <div>Apple Crisp</div>	<div>13 Nachos / meat</div> <div>and cheese</div> <div>Carrots</div> <div>Fruit Choice</div> <div>Cookie</div>	<div>14 Chicken Leg</div> <div>Mashed Potatoes</div> <div>Green Beans</div> <div>Mixed Fruit</div> <div>Biscuit Stick</div>	<div>15 Orange Chicken</div> <div>Popcorn Chicken</div> <div>Fried Rice</div> <div>Carrots &amp; Broccoli</div> <div>Mandarin Oranges</div>	<div>16 Pizza</div> <div>Salad</div> <div>Veggy Choice</div> <div>Banana</div> <div>Fruit Snack</div>	<div>17</div>
<div>18</div>	<div>19 Corn Dog</div> <div>Potato Cubes</div> <div>Carrots</div> <div>Fruit Slushie</div>	<div>20 Chick &amp; Noodles</div> <div>Mashed Potatoes</div> <div>Corn</div> <div>Applesauce Cup</div> <div>Dinner Roll</div>	<div>21 Chicken Tender</div> <div>Broccoli / Cheese</div> <div>Cherry Tomatoes</div> <div>Blueberries</div> <div>Corn Biscuit</div>	<div>22 Breakfast</div> <div>Sandwich</div> <div>Tri Tater</div> <div>Fresh Veggy</div> <div>Mixed Fruit</div>	<div>23 Grandparents</div> <div>Day Luncheon</div>	<div>24</div>
<div>25</div>	<div>26 Grilled Cheese</div> <div>Potato Wedges</div> <div>Mixed Vegys</div> <div>Fruit Choice</div> <div>Chocolate Grams</div>	<div>27 Walking Taco</div> <div>Lettuce &amp; Salsa</div> <div>Veggy Choice</div> <div>Apple Slices</div> <div>Cookie</div>	<div>28 Cheeseburger</div> <div>Baked Beans</div> <div>French Fries</div> <div>Pears</div>	<div>29 Pizza</div> <div>Corn</div> <div>Salad</div> <div>Warm Apples</div>	<div>30 Turkey &amp;</div> <div>Cheese Sandwich</div> <div>Carrots/Celery</div> <div>Chips</div> <div>Berry Cup</div>	

Date

Bethlehem Lutheran School

Orders Due: All orders must be prepaid and turned in on Mondays

Student Name

Parent

Phone #

Check #

Total

Send Scrip home with oldest child \_\_\_\_\_ or Pick Up \_\_\_\_\_

# Bethlehem Script Order

Date

Bethlehem Lutheran Church

Name

Check #

Total

If applicable - Tuition Credit For:

Merchant	%	\$	QTY	Total	Merchant	%	\$	QTY	Total
<b>Grocery Stores</b>					<b>Retail Stores</b>				
Community Markets	5%	\$25/\$100			Amazon	2.25%	\$25/\$100		
Gordon Foods	4%	\$25/\$100			American Eagle	10%	\$25		
Meijer	3%	\$25/\$100			Barnes & Noble	8%	\$10/\$25		
Sam's Club	2.50%	\$25/\$100			Bath & Body Work	12%	\$10		
Walmart	2.50%	\$25/\$100			Bed, Bath & Beyond	7%	\$25		
<b>Entertainment</b>					Best Buy	4%	\$25/\$100		
AMC Theatres	8%	\$25			Build A Bear Work	8%	\$25		
iTunes	5%	\$15			Cabela's	10%	\$25/\$100		
Goodrich Theatres	4%	\$10			Claire's	9%	\$10		
<b>Home Improvement</b>					CVS	6%	\$25/\$100		
Home Depot	4%	\$25/\$100			Dick's Sporting Goods	8%	\$25/\$100		
Lowe's	4%	\$25/\$100			Express	10%	\$25		
Menard's	3%	\$25/\$100			Gap	14%	\$25		
<b>Automotive (Gas, Parts, Services)</b>					JC Penney	5%	\$25/\$100		
BP	1.50%	\$50/\$100			Kohl's	4%	\$25/\$100		
Marathon	3%	\$25/\$100			Land's End	15%	\$25/\$100		
Shell	2.00%	\$25/\$100			Macy's	10%	\$25/\$100		
Speedway	4%	\$25			Maurice's	7%	\$20		
**Zurich's Tire - Monroe	5%	*			Michael's	4%	\$25		
					Old Navy	14%	\$25/\$100		
					Stein Mart	7%	\$25		
					Target	2.50%	\$25/\$100		
					T.J. Maxx/Marshall	7%	\$25/\$100		
					Walgreen's	5%	\$25		
<b>*Check with Scrip Coordinator</b>					<b>Local Restaurants</b>				
					Back Forty	10%	\$10		
					Bandido's	10%	\$10		
					Casa Restaurants	5%	\$10		
					East of Chicago	10%	\$10		
					Hall's Restaurants	10%	\$15		
					Nine Mile	9%	\$20		
					Richard's Restaura	10%	\$20		
					The Galley	10%	\$10		

\*Check with Scrip Coordinator

\*Checks are made out to Bethlehem Scrip

\*Rebates are split 50/50 between participating families & the Scrip program