



TIGER TALES

"JOY:FULLY LUTHERAN"



A big thank you to our adorable Nativity characters and to all who attended our Children's Service.

CALENDAR

Feb. 5 Wells County Spelling Bee
 Feb. 7 End of Mid Quarter
 Feb. 9 Pork Chop Dinner
 Feb. 9-15 Random Acts of Kindness Week
 Feb. 13 Mid Quarters sent home
 Feb. 14 NO SCHOOL
 Feb. 16 PTL Gym Cleaning
 Feb. 17 NO SCHOOL
 Feb. 20 Board of Education Meeting
 Feb. 23 Parents vs Kids Basketball
 Feb. 24 PTL Meeting
 Feb. 24-28 Achievement Testing
 Feb. 26 Youth Educator Officer Bledsoe

FEBRUARY 2020

Sun	Mon	Tue	Wed	Thu	Fri	Sat
	MY LOVE	BE MINE				1
2	3	4	5	6	7	8
9	10	11	12	13	14	15
16	17	18	19	20	21	22
23	24	25	26	27	28	29

BIRTHDAYS

Feb. 13 Mrs. Moehring
 Feb. 13 Cheyenna Carper
 Feb. 26 Leah Werling



BETHLEHEM PTL NEWS!

- **Gym Clean-up day will be February 16, 2020** starting at 2:00 p.m. The more people the quicker the day goes. It usually takes a couple hours; we clean up the bleachers and under them from all the trash and spills from the tournaments, sweep the gym floor, wipe up any scuff marks on the floors and walls, and clean the baseboards (which is usually a good job for kids, so bring them too!).
- **Parents vs. Kids basketball games/pizza party/ and sport recognition event-** This is for all school kids and their families even if you didn't participate in a sports activity, please still join us for a fun afternoon of basketball. Kids will play based on their grades (preschool joins in as well, so don't forget the young ones too!), they compete against their parents to see who is better! It is such a fun family day and fellowship with other school families, and after we have pizza, what could be better than that! Please plan to join us on February 23, 2020 at 4:00pm.
- **Monday, February 24, 2020 at 6:30 p.m.** We will have a **PTL meeting** along with a presentation from Mrs. Sandy Meyer, a family counselor and wife of our 5th & 6th grade teacher, Mr. Meyer. She will be speaking on how the emergence of social media and screen time has changed interpersonal dynamics of society and families. Oftentimes parents struggle with and have concerns as how to control this presence in the home. This presentation will explore effects of media on the family structure and provide discussion and practical strategies as to how to control your child's usage and behavior with media along with ideas of how to increase "real life" interactions between family members. Please plan to attend.
- Monday, March 2nd is our second annual **Pastries with Parents** morning; we hope that you will join us and your child for a little breakfast before school provided by the PTL.
- The week before Spring break is our annual **Teacher Appreciation Week** where we pamper our teachers each day. They do so much for our wonderful children that we feel they deserve a special week of pampering. Each day during that week we ask that one family volunteer to bring in a special lunch for the teachers, and then another family comes into do recess duty with the 3-8th kids, and a 3rd to read to the k-2 kids (giving our teachers a little extra break). For the lunches we have had some parents bring over take out from a local restaurant or even make their own specialty, anything is great! To sign up to help with either lunch, recess duty, or reading to the kids please contact Melissa Price or let Heidi know and we will be in contact with you as the day approaches.
- **Grandparent's Day-** this is such a wonderful event every year. Our grandparents and special visitors that day are pampered with chapel, a special lunch, and entertainment. This event is always a big hit, but takes lots of planning and volunteer help. We are asking ahead of time to please consider volunteering to help us during this event which is on Friday, April 3rd to make our grandparents/visitor feel special and loved.
- Finally, the evening of Friday, April 3rd is our **annual skating party** at West Skate Park in Huntington. We hope you will join us bring the family and enjoy a free evening of skating with family and friends.

SPELLING BEE WINNERS**1st grade**

Matthew Rekeweg 1st place
Hunter Householder 2nd place

2nd grade

Lucas Werling 1st place
Paizley Price 2nd place

3rd grade

Emma Wirgau 1st place
Kyndal Fuller 2nd place

4th grade

Rylee Hammond 1st place
Rachel Werling 2nd place

Overall school winners

Sarena Wirgau 1st place
Leah Werling 2nd place

5th grade

Sarena Wirgau 1st place
Molly Mishler 2nd place

6th grade

Max Eisaman 1st place
Franklin Bales 2nd place

7th grade

Ian Todd 1st place
Leah Werling 2nd place

8th grade

Jacob Runkel 1st place
Ben Schueler 2nd place



Sarena Wirgau will be representing Bethlehem at the Wells County Spelling Bee on Wednesday, February 5th. Best of luck Sarena!

CHAPEL OFFERING—Third Quarter

January 7 - March 13

At Lutheran World Relief, we envision a future where all people, in every corner of the world can live full, dignified lives.

Founded by Lutherans in the United States at the end of World War II, grounded in Lutheran theology and building on decades of experience, Lutheran World Relief tackles global poverty by helping people adapt to the challenges that threaten their livelihoods and well-being.

We work with people based on need, regardless of race, religion or nationality and we do not evangelize.

We provide aid in emergencies and help families restore their lives. We partner with communities to build and grow rural economies. We break the cycle of poverty, so families and communities can thrive.

Our goal is to help people build self-sufficiency and create new community-owned approaches to problem-solving that will last long after our projects end.

Our Mission

Affirming God's love for all people, we work with Lutherans and partners around the world to end poverty, injustice and human suffering.

Our Vision

Empowered by God's unconditional love in Jesus Christ, we envision a world in which each person, every community and all generations live in justice, dignity and peace.

RANDOM acts of KINDNESS



The Bethlehem Junior Choir students will be singing during the February 9th church service which begins at 9:00 a.m. Students will need to meet in the church Fellowship Hall by 8:45 a.m.

Weather permitting the students will be going outside for recess time. Please have your child dress appropriately for the weather. The students love to play in the snow so be sure that they have a warm winter coat, hats, gloves and even boots and snowpants can be sent.

Potential delays and cancellations for Bethlehem will follow the same as Northern Wells Community Schools. Sign up for text alerts at www.wane.com/text-alerts.

Bethlehem will NOT have school

Friday, February 14 due to Lutheran Teacher In-Service

Monday, February 17 for Presidents Day. (May still be used as a make up if days are missed)



Elearning packets will again be used this year and have been distributed to the students. Bethlehem will designate 5 days of missed school as Elearning.

With Gradelink you can stay updated on your child's academic progress at school and get information on upcoming assignments such as assignment descriptions and due dates. The following information is available to you when you **log in to Gradelink**:



- Current Grade in each class
- Current GPA for the term, if applicable
- Descriptions, Grades, and Teacher Comments for graded assignments
- Descriptions and Due Dates for upcoming assignments
- Assignment handouts or documents (attachments)
- Email Alerts you can configure for grades and attendance
- Attendance Information
- Transcript Information, if applicable
- Billing Information, if applicable

To access this information go to **www.gradelink.com** and click on the green Log In button. PLEASE CALL THE SCHOOL OFFICE IF YOU NEED ANY HELP

Show Your Love

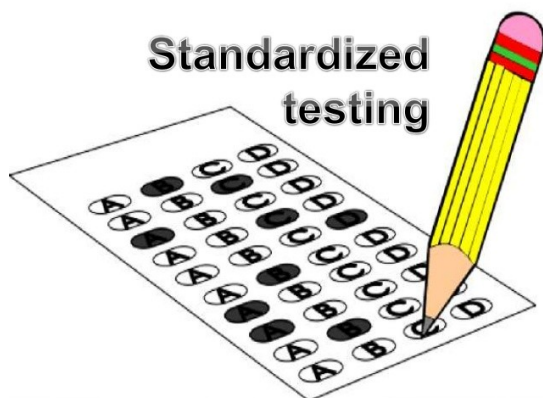
And this is love: that we walk in obedience to His commands. As you have heard from the beginning, His command is that you walk in love. 2 John 1:6



With Valentine's Day coming up we are reminded of love. The very essence and nature of God is love, it's in loving others that we are most like Him. Paul writes, *'If I give everything I own to the poor and even go to the stake to be burned as a martyr, but I don't love, I've got nothing. So, no matter what I say, what I believe, and what I do, I'm bankrupt without love' (1 Corinthians 13:3)*. Love cannot be learned or practiced in isolation. You have to be around people - irritating, imperfect, demanding, frustrating people. Sometimes we act as if relationships are something to be squeezed into our schedule. We talk about finding time, or about making time for others. Jesus summarized what matters most in two statements: *'Love God' and 'Love people' (Matthew 22:37-40)*. Relationships, not things, are what really matter in life. So why do we keep allowing our relationships to get shortchanged? Because when our lives become overloaded, we start skimming relationally, cutting back on the time, energy and attention good relationships require. We become too preoccupied with making a living, paying bills, and accomplishing goals, as if these were the point of life. They're not! The point of life is learning to love - God and people. Life minus love equals zero! At Bethlehem School we show God's love to our student's so they may show His love to others. We only have a limited time here on earth and it is better to tell everyone about God's love sooner, rather than later. Don't wait – tell everyone you care for that you love them.

In Christ,

Mark Schallhorn



Achievement Testing was developed to measure skills and knowledge learned in a given grade level. Grades K-6 will be tested starting February 24th. To assure good results, please be sure that your child is well rested and has a good breakfast each morning.

The Washington DC Group greatly appreciates your continued support! The Paper Gator bin is located next to the trash dumpster on the west stone parking lot. Paper products like newspapers, magazines, junk mail, shredded documents, and old books can be placed in the bin; NO cardboard and cereal box-like paper.

Thank you

A last load of aluminum will be taken in for recycling the month of February. Please be sure to drop off your large collections to Don and Amy Schuelers house or for small amounts place in the green container on the north end of the school. If you need someone to pick up your load, please contact Jay Werling at 260-438-8153. Profits will help with the last payment of our spring trip. Thank you

Shop at Kroger and help Bethlehem Lutheran School tuition assistance fund with the **Kroger Community Rewards Program**.

Register online at krogercommunityrewards.com, be sure to have your Kroger Plus card handy and register your card with Bethlehem Lutheran School as your organization for the reward. **The NPO number for Bethlehem is WG595#.**

If you don't have a Kroger Plus card, they are available at the customer service desk.

Members must swipe their registered Kroger Plus card or use the phone number that is related to their registered card when shopping for each purchase to count.

A BIG THANK YOU TO EVERYONE USING THIS PROGRAM. We recently received a check for \$81.78 to be used for tuition assistance. Thank you

PLAN TO USE SCRIP FOR ALL YOUR SHOPPING NEEDS and at the same time reduce your child's tuition fees for next year! Scrip orders can physically be placed on Mondays. Order forms are available in this newsletter or from the school office. For quick and easy ordering, try "ShopwithScrip." Buy physical gift cards, eGift cards and reloadable gift cards at face value with rebates going directly to our school. For more information on how to use the online feature, please see the attached flyer or contact our Scrip coordinator, Melissa Price at 260-433-5307 if you would have any questions. Thank you

Keep On Clipping... .

Box Tops, Spirit of America labels, Tyson Labels and Community Market receipts (**the whole receipt**) are all worth money for our school. Please send in your labels and receipts to help purchase needed school items. See below for examples. Don't forget box tops have an expiration date and are not worth anything after they expire. So turn them in regularly to make sure they are not wasted. Classroom contests will take place quarterly. Be sure to indicate which classroom to credit when sending your labels.

For questions, contact Jenny Todd our label coordinator,

KEEP ON CLIPPING !

DEADLINE FOR NEXT CONTEST IS FEBRUARY 28th

